

Executive Summary

West Virginia Department of Education Office of School Operations & Finance – School Facilities

Introduction: The Tyler County Board of Education respectfully requests approval for the closure and consolidation of Arthur I. Boreman Elementary School and Sistersville Elementary School into a New Tyler Consolidated Elementary School. These closures are not contingent on any other actions and are proposed to occur upon the projected completion of a New Tyler Consolidated Elementary School for the 2027-2028 school year.

Action: The Tyler County Board of Education requests approval of the following:

- The closure and consolidation of Arthur I. Boreman Elementary School and Sistersville Elementary School into a New Tyler Consolidated Elementary School. These closures are not contingent on any other actions and are proposed to occur upon the projected completion of a New Tyler Consolidated Elementary School for the 2027-2028 school year. Considering these closures, applicable West Virginia State Board of Education policies were reviewed and followed, and documents were available for public inspection for the required time. A closure hearing was held for Arthur I. Boreman Elementary School on January 22, 2025, and Sistersville Elementary School on January 21, 2025. The Tyler County Board of Education voted to approve these closures at their January 22, 2025, board meeting.
- Tyler County Board of Education requests a waiver of WVBE Policy 4336 for creating bus routes that will exceed the recommended duration of transportation time for elementary students.

Tyler County Schools

P.O. Box 25, Middlebourne, WV 26149
(304) 758-2145 Fax (304) 758-4566

A. Shane Highley, Superintendent
Katrina Byers, President
Larry Thomas, Vice-President
Andy Shreves, Member
Diana Stender, Member
Scott Strode, Member

Michele L. Blatt
State Superintendent
West Virginia Department of Education
1900 Kanawha Boulevard, East
Charleston, WV 25305-0330

January 23, 2025

Dear Superintendent Blatt:

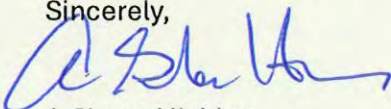
I am writing to respectfully request consideration for the closure and consolidation of Arthur I. Boreman Elementary and Sistersville Elementary schools, contingent upon the completion of a new elementary school building with an anticipated completion date to be August 2027.

The Tyler County Board of Education has diligently completed all required steps, ensuring compliance with relevant regulations and guidelines. The Tyler County Board of Education voted 5-0 in favor on January 22, 2025, at the alternate rescheduled public hearing board meeting to close and consolidate Arthur I. Boreman and Sistersville Elementary Schools into a new Tyler Consolidated Elementary School. Additionally, the CEFP has been voted 5 – 0 in favor and amended to reflect the approval of the board. All required documentation is contained within the completed closure document. Our thorough evaluation confirms that consolidation will yield numerous benefits, including enhanced educational opportunities, improved resource allocation, increased efficiency, and innovative learning environments.

We kindly request your approval to move forward with the closure and consolidation plan upon completion of the new elementary school.

Thank you for your time and consideration. If you need any further information, please contact me at your convenience.

Sincerely,



A. Shane Highley
Superintendent
Tyler County Schools
ahighley@k12.wv.us

IMPACT STATEMENT AND SUPPORTING DATA

FOR THE

**CLOSURE AND CONSOLIDATION OF
ARTHUR I. BOREMAN ELEMENTARY AND
SISTERSVILLE ELEMENTARY SCHOOL INTO
A NEW TYLER CONSOLIDATED ELEMENTARY SCHOOL**

TYLER COUNTY BOARD OF EDUCATION

Prepared Pursuant to

**W. Va. Codes §18-5-13 and §18-5-13a and
WVBE Policies 6200 and 6204.**

Tyler County Schools

**Under the direction and authority of
The West Virginia Board of Education (WVBE)**

Public Hearing Date(s):	January 6, 2025 AIB @ Tyler Consolidated January 21, 2025 SES @ Tyler Consolidated
County Board Approval Date(s):	January 21, 2025 @ Tyler Consolidated
Alternate Date:	January 22, 2025 @ Tyler Consolidated

This template (revised 12/06/23) is provided by the WVDE as a technical assistance tool for county boards to use in the preparation of their supporting documents for a proposed school closure or consolidation. This template does not reduce or eliminate the requirements found in WV State Code or WVBE Policy 6204 as they relate to school closures or consolidations. This document does not replace or supplant legal assistance provided by counsel engaged to represent the county.

Table of Contents

3.1. County Procedures	3
3.2. Executive Summary and Impact Statements	4
3.2.a Student Enrollment	7
3.2.b. Facilities	11
Educational Needs-Building Review	12
Educational Needs-Building Review	12
3.2.c. Finance.....	15
3.2.d. Personnel	17
3.2.e. Student Transportation	19
3.2.f. Student Educational Program	21
3.2.g. Community	22
3.3. & 3.4. Public Notices and Hearings	25
3.6. County Board Actions	28
3.6. Superintendent Verification of Board Actions	29
Appendix of Supporting Data	30

3.1. County Procedures

WVDE Application for school closure and/or consolidation

Tyler County

Closure and Consolidation of Arthur I. Boreman Elementary and Sistersville Elementary School into Tyler Consolidated Elementary School.

Scheduled Dates of Hearings:

AIB:

- January 6, 2025 at 6 P.M. at Tyler Consolidated Middle/High School – Auditorium

SES:

- January 21, 2025 at 6 P.M. at Tyler Consolidated Middle/High School – Auditorium

AIB (Alternate):

- January 22, 2025 at 6 P.M. at Tyler Consolidated Middle/High School – Auditorium

SES (Alternate):

- January 22, 2025 at 7 P.M. at Tyler Consolidated Middle/High School – Auditorium

Scheduled Date of County Board Votes:

- January 21, 2025 at 7 P.M. at Tyler Consolidated Middle/High School – Auditorium
- (Alternate) January 22, 2025 – Tyler County Board will vote immediately following the hearings for AIB at 6 P.M. and SES at 7 P.M. - at Tyler Consolidated Middle/High School – Auditorium

County Procedures

This template shall be used to accumulate and present the data that is requested in Policy 6204 and W.Va. Code 18-5-13a to support the closure or consolidation of a WV public school.

The county shall prepare and submit an impact statement and supporting data concerning proposed school closings or consolidations to the WVBE for approval in accordance with this policy and W. Va. Code §18-5-13a. The impact statement and supporting data shall:

- be available for public inspection in the office of the county superintendent during the 30 days preceding the date of the public hearing; and*

Be delivered in duplicate to the:

- principal of a school that is proposed to be closed or consolidated, and of any school which the county designates to receive the students who are relocated as a result of the closure or consolidation; and*
- chair of the local school improvement council (LSIC) representing a school that is proposed to be closed or consolidated, and any school that the county designates to receive the students who are relocated as a result of the closure or consolidation.*
- A copy of the notice shall be posted at all schools, bus garages, and maintenance areas in the county in conspicuous working areas, for all professional and service personnel to observe.*

A. Shane Highley



Superintendent

11/20/24

Date

3.2. Executive Summary and Impact Statements

County Procedures

The Tyler County Board of Education (TCBOE) proposes the closure and consolidation of Arthur I. Boreman Elementary and Sistersville Elementary into a newly constructed Tyler Consolidated Elementary School with an anticipated completion date of August 2027. This marks a significant milestone in our commitment to providing exceptional education and opportunities for our students. This strategic decision embodies our vision for a more efficient, equitable, and innovative learning environment.

Benefits of Consolidation:

- **Enhanced Academic Opportunities:** A unified school will offer a broader range of courses, extracurricular activities, and specialized programs, fostering a more comprehensive education.
- **Improved Facilities:** The new Tyler Consolidated Elementary School will feature modern classrooms, state-of-the-art technology, and safer, more accessible infrastructure.
- **Increased Efficiency:** Consolidation reduces operational costs, allowing for reallocation of resources to support student programs and services.
- **Stronger Community Bonds:** Uniting students, families, and staff from both schools will foster a sense of unity and shared pride in our educational community.
- **Better Resource Allocation:** Consolidation enables more effective use of resources, including personnel, materials, and facilities.
- **Environmental Sustainability:** A new, energy-efficient building reduces our carbon footprint and promotes eco-friendly practices.
- **Accessibility and Safety:** The new school's design prioritizes accessibility, safety, and security features.
- **Economies of Scale:** Consolidation reduces maintenance and utility costs, redirecting funds toward educational initiatives.
- **Unified School Culture:** Tyler Consolidated Elementary School will cultivate a vibrant, inclusive culture, promoting socialization, diversity, and teamwork.

Embracing Change, Building Excellence

The consolidation of Arthur I. Boreman Elementary and Sistersville Elementary into Tyler Consolidated Elementary School represents a bold step forward. Together, we will create a dynamic learning environment that supports the unique needs of our students, fosters community engagement, and prepares our children for success in an ever-changing world.

Enrollment 3.2.a. (Starting on Page 7)

Countywide Enrollment Trend:

- There is a general decline in student enrollment over the 10-year period, from 1,303 students in 2015-2016 to 1,187 projected for 2024-2025.
- The lowest enrollment was in 2020-2021 with 1,185 students.
- A slight recovery occurs between 2021-2022 and 2023-2024, with a peak at 1,250 in 2022-2023.

Arthur I. Boreman Elementary School

- The specific school shows a consistent decline over the 10-year period, starting from 343 students in 2015-2016 to 269 projected for 2024-2025.
- The biggest drop occurred between 2019-2020 (321 students) and 2020-2021 (287 students).

Sistersville Elementary School

- Enrollment fluctuates
- The number drops significantly between 2019-2020 (288 students) and 2020-2021 (267 students).
- However, a recovery follows, with projected growth from 267 in 2020-2021 to 280 students in 2023-2024.

Overall, the data indicates a declining trend in enrollment across the district, with some fluctuations in individual schools.

Facilities 3.2.b. (Starting on Page 11)

Arthur I. Boreman Elementary School:

1. Age: Built in 1974, with renovations in 1996
2. Square Footage: approximately 54,000 sq. ft.
3. Capacity: Designed for 450 students
4. Amenities:
 - a. Classrooms, Gymnasium, Cafeteria, Library/Media Center, Playground
 - b. Parking for 75+ vehicles
5. Condition: Fair to Good

Sistersville Elementary School:

1. Age: Built in 1975, with renovations in 1999
2. Square Footage: approximately 43,000 sq. ft.
3. Capacity: Designed for 350 students
4. Amenities:
 - a. Classrooms, Gymnasium, Cafeteria, Library/Media Center, Playground
 - b. Parking for 50+ vehicles
5. Condition: Fair

Shared Concerns:

1. Aging infrastructure
2. Limited technology infrastructure
3. Inefficient energy systems
4. Accessibility concerns (ADA compliance)
5. Parking and traffic flow issues

Potential Consolidation Implications:

1. Reduced maintenance costs
2. Improved resource allocation
3. Enhanced educational opportunities
4. Potential for modernized facilities

Finance 3.2.c. (Starting on Page 15)

To provide an equal and quality education to each student in Tyler County, the board proposes to consolidate services. This closure would save the Board of Education on maintenance and operating expenses on two buildings that are antiquated.

Personnel 3.2.d. (Starting on Page 17)

Tyler County Board of Education will continue to follow the WVDE recommended guidelines on the number of employees but maintain the number of staff required to deliver a quality education to all students. All staff will have a job.

Student Transportation 3.2.e. (Starting on Page 19)

There are no major or negative variances with any of the bus routes. The driving distance between Arthur I. Boreman Elementary School and Tyler Consolidated Elementary School is approximately 5.9 miles. The driving distance between Sistersville Elementary School and Tyler Consolidated Elementary School is approximately 9.1 miles.

Student Educational Program 3.2.f. (Starting on Page 21)

Tyler County Schools ensure an engaging educational environment for learners focusing on teaching and learning so all students can obtain a quality education. Consolidating Arthur I. Boreman Elementary School and Sistersville Elementary School into Tyler Consolidated Elementary School presents a transformative opportunity to elevate student educational programs, foster innovation, and promote academic excellence. Consolidating Arthur I. Boreman Elementary School and Sistersville Elementary School into Tyler Consolidated Elementary School demonstrates our commitment to providing exceptional education, fostering innovation and growth, building a vibrant, inclusive community, and preparing students for success in an ever-changing world.

By uniting our resources, talent, and passion, we will create a world-class educational environment at Tyler Consolidated Elementary School, empowering students to thrive and reach their full potential.

Community 3.2.g (Starting on Page 22)

The consolidation of Arthur I. Boreman Elementary and Sistersville Elementary into Tyler Consolidated Elementary School will impact the Tyler County community.

Positive Impacts:

1. Unified community with a shared purpose.
2. Improved resources and efficiency.
3. Enhanced educational opportunities.
4. Modern facilities promoting safety and innovation.
5. Increased accessibility and simplified transportation.

Negative Impacts:

1. Loss of community identity and pride.
2. Disruption of social networks and relationships.
3. Potential decline in community engagement and volunteerism.

By embracing consolidation, we ensure students, teachers, and the community thrive in a dynamic educational environment.

3.2.a Student Enrollment

County Procedures

Countywide Enrollment Trend:

- There is a general decline in student enrollment over the 10-year period, from 1,303 students in 2015-2016 to 1,187 projected for 2024-2025.
- The lowest enrollment was in 2020-2021 with 1,185 students.
- A slight recovery occurs between 2021-2022 and 2023-2024, with a peak at 1,250 in 2022-2023.

Arthur I. Boreman Elementary School

- The specific school shows a consistent decline over the 10-year period, starting from 343 students in 2015-2016 to 277 projected for 2024-2025.
- The biggest drop occurred between 2019-2020 (321 students) and 2020-2021 (287 students).

Sistersville Elementary School

- Enrollment fluctuates
- The number drops significantly between 2019-2020 (288 students) and 2020-2021 (267 students).
- However, a recovery follows, with projected growth from 267 in 2020-2021 to 280 students in 2023-2024.

Overall, the data indicates a declining trend in enrollment across the district, with some fluctuations in individual schools.

Enrollment and Population Table

Trends in student population growth or decline in the county for the previous 10 years.

Year	2015-2016	2016-2017	2017-2018	2018-2019	2019-2020	2020-2021	2021-2022	2022-2023	2023-2024	2024-2025
Total	1303	1309	1291	1260	1233	1185	1228	1250	1191	1187

Enrollment Table 1

Trends in student population growth or decline in the attendance area of the school targeted for closure or consolidation for the previous 10 years.

AIB Year	2015-2016	2016-2017	2017-2018	2018-2019	2019-2020	2020-2021	2021-2022	2022-2023	2023-2024	2024-2025
Total	343	331	355	344	321	287	307	311	277	269

Enrollment Table 2

Trends in student population growth or decline in attendance area of the school or schools which the county designates to receive the students affected for the previous 10 years.

SES Year	2015-2016	2016-2017	2017-2018	2018-2019	2019-2020	2020-2021	2021-2022	2022-2023	2023-2024	2024-2025
Total	260	292	282	288	279	267	281	296	280	237

Enrollment Table 3

Population data and characteristics for the county. At a minimum, the data shall include the total population, number of births, number of deaths, and age composition of the county for the previous ten years. The requisite information shall be cited and may be obtained from local, state, and national agencies for health and statistics.

Year	2013	2014	2015	2016	2017	2018	2019	2020	2021	2022
Population	9134	9068	9014	8959	8903	8846	8790	8686	8644	8908
Births	73	69	77	74	71	76	81	69	73	-----
Deaths	139	124	133	121	136	129	123	134	127	-----

Enrollment Table 4

*2021 is the latest available year from Health Department Vital Statistics.

Age Composition (2020):

- Under 18: 18.2% [2]
- 18-64: 59.2% [2]
- 65+: 22.6% [2]
- Median Age: 45.4 [2]

Additional Characteristics:

- Population Density (2020): 23.5 people per square mile [2]
- High School Graduate or Higher (2020): 84.2% [2]
- Bachelor's Degree or Higher (2020): 16.4% [2]
- Median Household Income (2020): \$43,611 [2]
- Poverty Rate (2020): 14.3% [2]

Sources:

[1] United States Census Bureau (2022). Annual Estimates of the Resident Population for Counties: April 1, 2020 to July 1, 2022.

[2] United States Census Bureau (2020). American Community Survey 5-Year Estimates.

[3] United States Census Bureau (2010). Census of Population and Housing.

[4] West Virginia Department of Health and Human Resources, Bureau for Public Health, Health Statistics Center (2022). Vital Statistics

Age Composition (Percent of Total Population)

Year	<1	1-4	5-14	15-24	25-34	35-44	45-54	55-64	65-74	75-84	>85
2013	4.6	5.5	13.4	11.1	12.1	14.5	16.3	13.4	10.3	6.2	3.1
2014	4.5	5.4	13.2	10.9	12.0	14.3	16.2	13.5	10.4	6.3	3.2
2015	4.4	5.3	12.9	10.7	11.9	14.1	16.1	13.7	10.5	6.4	3.3
2016	4.3	5.2	12.6	10.5	11.8	13.9	16.0	14.0	10.7	6.5	3.4

2017	4.2	5.1	12.3	10.3	11.7	13.7	15.9	14.2	10.9	6.6	3.5
2018	4.1	5.0	12.0	10.1	11.6	13.5	15.8	14.4	11.1	6.7	3.6
2019	4.0	4.9	11.7	9.9	11.5	13.3	15.7	14.6	11.3	6.8	3.7
2020	3.9	4.8	11.4	9.7	11.4	13.1	15.6	14.8	11.5	6.9	3.8
2021	3.8	4.7	11.1	9.5	11.3	12.9	15.5	15.0	11.7	7.0	3.9
2022	3.7	4.6	10.8	9.3	11.2	12.7	15.4	15.2	12.0	7.1	4.0

Enrollment Table 5

Source:

United States Census Bureau (2022). Annual Estimates of the Resident Population by Age, Sex, Race, and Hispanic Origin

Projections of enrollment, by grade and school, in the affected attendance area, for the next ten years.

Projection Method

1. **Average Growth Rate:** Calculate the average growth rate from past years (if data is available). If not, you can use an assumed annual growth rate based on local trends (e.g., 1-3% per year).
2. **Yearly Projection:**
 - a. Assuming a growth rate of 2% per year for simplicity:

Arthur I. Boreman Elementary School

<i>Year</i>	2024-2025	2025-2026	2026-2027	2027-2028	2029-2030	2030-2031	2031-2032	2032-2033	2033-2034	2034-2035
Pre K Grade	30	31	31	32	32	33	33	34	34	35
K Grade	32	33	33	34	34	35	35	36	36	37
1 st Grade	42	43	44	44	45	46	46	47	48	48
2 nd Grade	42	42	43	43	44	44	45	45	46	46
3 rd Grade	50	50	51	52	53	54	55	56	57	58
4 th Grade	35	36	37	38	39	40	41	42	43	44

5 th Grade	39	40	41	42	43	44	45	46	47	48
--------------------------	----	----	----	----	----	----	----	----	----	----

<https://tyler.sis.k12.wv.us/apps/ptl/ptl100/sso.shtml>

Enrollment Table 6

Sistersville Elementary School

Year	2024-2025	2025-2026	2026-2027	2027-2028	2029-2030	2030-2031	2031-2032	2032-2033	2033-2034	2034-2035
Pre K Grade	24	25	26	27	27	28	28	29	29	30
K Grade	29	30	31	32	33	34	34	35	36	37
1 st Grade	40	41	42	43	44	45	46	47	48	49
2 nd Grade	32	33	34	35	36	37	38	39	40	41
3 rd Grade	36	37	38	39	40	41	42	43	44	45
4 th Grade	33	34	35	36	37	38	39	40	41	42
5 th Grade	43	44	45	46	47	48	49	50	51	52

<https://tyler.sis.k12.wv.us/apps/ptl/ptl100/sso.shtml>

Enrollment Table 7

3.2.b. Facilities

County Procedures

Descriptive Maps

General Reference Maps showing prominent natural and manmade features where the location of school(s) targeted for closure or consolidation and the school(s) that the county designates to receive the students are highlighted.



Map 1

School	Grade Config.	Enrollment Before/After Action	Utilization Before/After Action	Distance to School A	Distance to School B	Distance to New School C
Closing School: AIB	PK - 5	271/0	44%/0%			5.9 miles 10 min.
Closing School: SES	PK - 5	233/0	45%/0%			9.1 miles 14 minutes
New School: Tyler Cons. Elem.	PK - 5	0/506	0%/56%	5.9 miles 10 min.	9.1 miles 14 minutes	

Facilities Table 1

Written Facility Condition Description

Written description of the physical condition of the school targeted for closure or consolidation and the school or schools which the county designates to receive the students. This description shall include age, number of buildings, general condition, and adequacy of structural, electrical, and mechanical systems to provide a safe and healthy environment.

Building Name: Arthur I. Boreman Elementary School

Educational Needs-Building Review

Describe Existing Facility:

Arthur I. Boreman opened in 1974 as a single story, handicapped accessible brick structure that was remodeled through funding of an SBA Needs Project in 1996. At that time Arthur I. Boreman was remodeled to add 8 classrooms, a separate dining area, a separate P.E. space, and 4 student restrooms. In 2004, Arthur I. Boreman absorbed the off-site PreK program and now houses it onsite.

Gas heat. Public sanitary. City Water. Sprinkler system with a diesel engine-driven fire pump. Based on recommendations from the previous CEFP, most of the VAT has been removed or encapsulated at this point. Due to floor slab deterioration present in some areas, a weather vapor seal has been utilized and flooring in hallways and most classroom spaces have been changed over to porcelain tile rather than VCT. The kitchen has been fully renovated as well as the purchase of new cafeteria tables. In 2008, the school was awarded a MIP to replace all exterior doors and the addition of access control to the exterior doors. The HVAC was completely replaced in 2009-2010 due to a SBA NEEDS project; however, the RTUs are nearing the end of their life expectancy. In 2017, the school was awarded another SBA NEEDS project for a roof replacement consisting of an EPDM roof rather than the previous ballasted roof. Ladder access to the roof was added during the roof replacement project. Most recently, the maintenance department has been switching lights to LED. The technology department has been upgrading data wiring and moving to a one-to-one ratio for students. The school has a new telephone/intercom system that works collectively countywide as well as new security cameras for the indoor and outdoor areas. The parking lot was recently repaved in 2018, and additional parking spots were created at that time.

Describe Existing Facility Site:

Arthur I. Boreman sits on about 5.3 acres with adequate playground space, on-site parking, site access and bus loading.

Building Name: Sistersville Elementary School

Educational Needs-Building Review

Describe Existing Facility:

Sistersville Elementary School is a single story, handicapped accessible brick structure that opened a year later than A. I. B. Elementary in 1975 and was remodeled with two major additions in 1999. Many of the facility needs were corrected during that remodeling project including permanent classrooms, with interior doors rather than portable partitions, the addition of 7 classrooms, a dining area, and 4 student restrooms.

Gas heat. Public sanitary. City Water. Sprinkler system with a diesel engine-driven fire pump. Based on recommendations from the previous CEFP, most of the VAT has been removed or encapsulated at this point. Flooring in hallways and restrooms have been changed over to porcelain tile rather than VCT. The kitchen has been fully renovated as well as the purchase of new cafeteria tables. In 2008, the school was awarded a MIP to replace all exterior doors and

the addition of access control to the exterior doors. The HVAC was completely replaced in 2009-2010 due to a SBA NEEDS project; however, the RTUS are nearing their life expectancy. In 2017, the school was awarded another SBA NEEDS project for a roof replacement consisting of an EPDM roof rather than the previous ballasted roof. Ladder access to the roof was added during the roof replacement project. Most recently, the maintenance department has been switching lights to LED. The technology department has been upgrading data wiring and moving to a one-to-one ratio for students. The school has a new telephone/intercom system that works collectively countywide as well as new security cameras for the indoor and outdoor areas.

Describe Existing Facility Site:

Sistersville Elementary sits on about 6 acres with inadequate playground space for the size of the school, on-site parking is limited, site access and bus loading is difficult to navigate. Some site drainage problems. Secondary access road is in very poor condition and cannot be traveled by bus.

Educational Programs and Related Student Services

Evaluation of the school targeted for closure or consolidation and the school or schools that the county designates to receive the students in regard to the school(s) adaptability to the present and proposed educational programs, and the provisions of related student services.

Policy 6200 guidelines will be used in the closure of Arthur I. Boreman Elementary and Sistersville Elementary School and the building and opening of the new Tyler Consolidated Elementary School.

School Enrollments, Capacities, and Utilizations

School	Enrollment	Building Capacity	Utilization %
Closing School Arthur I. Boreman Elementary	Pre K – 5 271	616	44%
Closing School Sistersville Elementary School	Pre K – 5 233	522	45%
New Tyler Consolidated Elementary School	Pre K – 5 506	911	56%

Facilities Table 2

Utilization Calculation Sheet

The supporting School Building Authority of West Virginia’s (SBA) Worksheet on Building Program Utilization.

[See Appendix for this Documentation](#)

Required Services and Barrier-free Environments

Comparison of the school(s) targeted for closure or consolidation and the school(s) which the county has designated to receive the students in regard to providing the required services and barrier-free environments to students with disabilities.

Arthur I. Boreman Elementary School:

Arthur I. Boreman was constructed in 1974 and is ADA accessible in most areas except for access to the stage and doesn’t have a secure entrance.

Sistersville Elementary School:

Sistersville Elementary was constructed in 1975 and is ADA accessible in most areas except for access to the stage and doesn't have a secure entrance.

Grade Configurations and Educational Programs

Elaboration on the effect the proposed school closing or consolidation will have on the school system's future plans regarding grade configuration, educational programs, and facility requirements.

The existing Comprehensive Educational Facilities Plan will be amended to allow for the closure of AIB and SES Elementary Schools. These closures would allow for more efficient and increased dispersion of resources to areas of need. It would give the students of Tyler County Schools access to more appropriate and advantageous educational programs.

Construction Work Required for the Proposed Action

Elaboration on the planned facility additions, renovations, or replacements that are required by the county to accommodate the proposed closing and consolidation.

Arthur I. Boreman Elementary School

No additions, renovations, or replacements are required by the county for the proposed closure.

Sistersville Elementary School

No additions, renovations, or replacements are required by the county for the proposed closure.

Tyler Consolidated Elementary School

New construction of school facility.

The Future of Closed Facilities

Elaboration on the future use or disposal of facilities designated by the county for closure.

Arthur I. Boreman Elementary School

The intent is to sell the existing building.

Sistersville Elementary School

The intent is to sell the existing building.

3.2.c. Finance

County Procedures

Itemization of Anticipated Cost and Savings

Itemization of the anticipated cost or savings the county will experience in all areas as a result of the proposed school closure or consolidation. Such itemization shall be in the form of a table indicating the following:

Closing School(s) Annual Current Cost

The current annual cost at the school(s) to be closed for:

Arthur I. Boreman Elementary School

Item	Amount
Utilities	113,690
Personnel	3,017,069
Maintenance	93,648
Transportation	648,895
Other	189,303
Total	4,062,605

Finance Table 1

Sistersville Elementary School

Item	Amount
Utilities	123,276
Personnel	3,064,308
Maintenance	123,594
Transportation	571,728
Other	272,620
Total	4,155,526

Finance Table 2

Newly Constructed Elementary: Anticipated Annual Cost after Action

The anticipated annual cost at the school(s) to be receiving for:

Tyler Consolidated Elementary School

Item	Amount
Utilities	236,966
Personnel	6,081,377
Maintenance	217,242
Transportation	1,220,623
Other	461,923
Total	8,218,131

Finance Table 3

Net Cost or Savings

The net cost or savings of the school(s) to be closed and the school(s) designated by the county to be receiving students for:

Tyler Consolidated Elementary School

<i>Item</i>	<i>Cost or Savings</i>	<i>Amount</i>
<i>Utilities</i>		236,966
<i>Personnel</i>		6,081,377
<i>Maintenance</i>		217,242
<i>Transportation</i>		1,220,623
<i>Other</i>		461,923
<i>Total</i>		8,218,131

Finance Table 4

**At this time, there are no overall anticipated cost savings.*

Anticipated Construction Cost to Accommodate Action

Cost of any renovation or addition resulting from the proposed school closure or consolidation, including all proposed funding sources.

Anticipated Preliminary Rough Construction Estimate Cost: \$60,000,000

County Expense Fund History

Five-year history of the county's unrestricted general current expense fund balance and that balance as a percentage of the county's approved levy estimate.

<i>Year</i>	<i>Unrestricted General Current Expense Fund Balance</i>	<i>Approved Levy Estimate</i>	<i>Percentage of Approved Levy Estimate</i>
2024	25,826,233	41,053,456	62.91%
2023	10,013,682	16,020,731	62.50%
2022	13,260,163	19,286,824	68.75%
2021	3,090,856	17,865,931	17.30%
2020	6,946,907	11,655,025	59.60%

Finance Table 5

3.2.d. Personnel

County Procedures

Analysis of Anticipated Personnel Changes

An analysis of the effect the proposed school closure or consolidation will have on professional and service personnel. The analysis shall include, at a minimum, the following data regarding the anticipated increases or decreases in employment as a result of this proposed closure or consolidation:

Arthur I. Boreman Elementary School – Current School Personnel Data Chart				
Professional Personnel	Administration	Teachers	Counselor	Nurse
<i>number professional personnel currently employed at the affected school(s);</i>	1	26.5	.5	1
Service Personnel	Cooks	Aides	Custodians	Secretary
<i>number service personnel currently employed at the affected school(s);</i>	3	13	3	1

Personnel Table 1

Sistersville Elementary School – Current Before Proposed Action				
Professional Personnel	Administration	Teachers	Counselor	Nurse
<i>number professional personnel currently employed at the affected school(s);</i>	1	25.5	.5	1
Service Personnel	Cooks	Aides	Custodians	Secretary
<i>number service personnel currently employed at the affected school(s);</i>	3	13	3	1

Personnel Table 2

Current Affected School Total – Before Proposed Action				
Professional Personnel	Administration	Teachers	Counselor	Nurse
<i>total number of professional personnel currently employed at all affected schools;</i>	2	52	1	2
Service Personnel	Cooks	Aides	Custodians	Secretary
<i>total number of service personnel currently employed at all affected schools;</i>	6	26	6	2

Personnel Table 3

Receiving or Consolidated School Total – Anticipated After Proposed Action				
Professional Personnel	Administration	Teachers	Counselor	Nurse
<i>total number of professional personnel who are anticipated to be employed at the affected school(s) upon the completion of the closure or consolidation;</i>	2	52	1	2
Service Personnel	Cooks	Aides	Custodians	Secretary
<i>total number of service personnel who are anticipated to be employed at the affected school(s) upon the completion of the closure or consolidation;</i>	6	30	6	2

Personnel Table 4

Identify Affected School – Anticipated Net Change After Proposed Action				
Professional Personnel	Administration	Teachers	Counselor	Nurse
<i>the anticipated net change in professional personnel due to the proposed closure or consolidation</i>	0	0	0	0
Service Personnel	Cooks	Aides	Custodians	Secretary
<i>the anticipated net change in service personnel due to the proposed closure or consolidation</i>	0	+4	0	0

Personnel Table 5

3.2.e. Student Transportation

County Procedures

Analysis of Anticipated Transportation Time Changes

Explain any variances of W. Va. 126CSR92, Policy 4336, West Virginia School Bus Transportation Regulations, Procedures, and Specifications for the Design and Equipment of School Buses (Policy 4336), section 15, Guidelines for Bus Routing, and the effects the variances may have on transportation. Provide the following bus route data and travel times:

Current and Differences of Travel Times

List the current travel time by bus route for students in the communities of the schools planned for closure or consolidation and the estimated increase or decrease in travel time as a result of the closure; and

Arthur I. Boreman School

Route	Community	Current Travel Time	Estimated Time after Closure or Consolidation	Net Increase or Decrease
Route 35	Alma	32 min.	42 min	+ 10 min
Route 43	Deep Valley	52 min	59 min	+ 8 min
Route 44	Middlebourne	55 min	35 min	- 20 min
Route 48	Big Run/Indian Creek	30 min	40 min	+ 10 min
Route 49	Klondike	29 min	39 min	+ 10 min
Route 53	Ten Mile	23 min	13 min	- 10 min
Route 54	Rush Fork/Meadville	42 min	32 min	- 10 min
Route 55	Hisams Cabins/Sellers	49 min	21 min	- 28 min
Route 56†	Haddox Run	40 min	30 min	- 10 min
Route 57	Indian Creek	35 min	45 min	+ 10 min
Route 58	Haddox Run/McKim	48 min	38 min	- 10 min
Route 61	Elk Fork	37 min	27 min	- 10 min
Route 62	Next Rd.	52 min	30 min	- 22 min
Route 65	Twin Hickory/Willow Fork	53 min	43 min	- 10 min
Route 66	Buck Run	48 min	38 min	- 10 min
Route 67	Conway	34 min	44 min	+ 10 min

Transportation Table 1 † - Denotes Special Needs Bu

Sistersville Elementary School

Route	Community	Current Travel Time	Estimated Time after Closure or Consolidation	Net Increase or Decrease
Route 41	Oil Ridge	30 min	44 min	+ 14 min
Route 42	Rippentuck	52 min	32 min	- 20 min
Route 46†	Cow House/Sistersville	45 min	59 min	+ 14 min
Route 47	Bens Run/Friendly	12 min	26 min	+ 14 min
Route 50	Pursley/Sistersville	42 min	24 min	- 18 min
Route 52	Timber Ridge/Sistersville	25 min	39 min	+ 14 min

Route 59	Paden City	13 min	27 min	+ 14 min
Route 60†	Paden City/Sistersville	44 min	58 min	+ 14 min
Route 63	Friendly Hill	44 min	29 min	- 15 min
Route 64	North PC/New Martinsville	25 min	39 min	+ 14 min

Transportation Table 2 † - Denotes Special Needs Bus

Anticipated Routes and Waiver Requests

List all anticipated bus routes after the proposed closure or consolidation with the estimated total one-way travel time for each route. Clearly identify any bus routes that exceed the recommended travel times and any routes which will require a waiver of Policy 4336.

Identify School

Route	Community	One-way Travel Time	Amount Exceeding Recommended Travel Times	Is a Waiver of W. Va. 126CSR92, Policy 4336 Required (Yes / No)*
Route 43	Deep Valley	59 min	14 min	YES
Route 46†	Cow House/Sistersville	59 min	14 min	YES
Route 60†	Paden City/Sistersville	58 min	13 min	YES

Transportation Table 2 † - Denotes Special Needs Bus

*A waiver of WVBE Policy 4336 is only required for elementary school routes that have a one-way transportation time greater than 45 minutes.

Travel Time to Neighboring County Public School

Identify and provide the travel time to any neighboring county public schools that could serve the population of the closing school(s) where travel time to the identified out-of-county school is less than or equal to the school(s) designated by the county to receive students.

Wetzel County – Paden City Elementary School

- From Sistersville Elementary, Sistersville, WV 5.1 miles – 9 min.
- From Arthur I. Boreman Elementary, Middlebourne, WV 18.8 miles – 26 min.

3.2.f. Student Educational Program

County Procedures

Analysis and Assurance of Consideration

Complete a projected educational program improvement analysis which includes a statement of assurance that the following have been considered:

Affected School Name(s)

Arthur I. Boreman Elementary School
Sistersville Elementary

Benefits of Consolidation:

- **Enhanced Academic Opportunities:** A unified school will offer a broader range of courses, extracurricular activities, and specialized programs, fostering a more comprehensive education.
- **Improved Facilities:** The new Tyler Consolidated Elementary School will feature modern classrooms, state-of-the-art technology, and safer, more accessible infrastructure.
- **Increased Efficiency:** Consolidation reduces operational costs, allowing for reallocation of resources to support student programs and services.
- **Stronger Community Bonds:** Uniting students, families, and staff from both schools will foster a sense of unity and shared pride in our educational community.
- **Better Resource Allocation:** Consolidation enables more effective use of resources, including personnel, materials, and facilities.
- **Environmental Sustainability:** A new, energy-efficient building reduces our carbon footprint and promotes eco-friendly practices.
- **Accessibility and Safety:** The new school's design prioritizes accessibility, safety, and security features.
- **Economies of Scale:** Consolidation reduces maintenance and utility costs, redirecting funds toward educational initiatives.
- **Unified School Culture:** Tyler Consolidated Elementary School will cultivate a vibrant, inclusive culture, promoting socialization, diversity, and teamwork.

Embracing Change, Building Excellence

The consolidation of Arthur I. Boreman Elementary and Sistersville Elementary into Tyler Consolidated Elementary School represents a bold step forward. Together, we will create a dynamic learning environment that supports the unique needs of our students, fosters community engagement, and prepares our children for success in an ever-changing world.

In the preparation of the documents regarding the closure and/or consolidation of the above referenced school, the following codes and policies have been considered:

Please check each item that was considered.

- W. Va. 126CSR16, Policy 2419, Regulations for the Education of Students with Exceptionalities,
- W. Va. 126CSR42, Policy 2510, Assuring the Quality of Education: Regulations for Education Programs,
- W. Va. 126CSR44 et al., Policy 2520, Content Standards and Objectives for West Virginia Schools,
- W. Va. 126CSR172 Policy 6200- Handbook on Planning School Facilities,
- Policy 6204-School Closings or Consolidations

Superintendent

11/20/24

Date:

3.2.g. Community

An impact statement regarding the effect the proposed school closure or consolidation will have on the affected communities and their students. Where schools and their respective communities are all defined by their own unique relationships, each proposed action will result in varying types and degrees of community impact. To better understand this diverse relational dynamic, the impact statement shall describe:

1. *The known relationships that exist among the affected schools and their communities.*

Impact Statement: Arthur I. Boreman Elementary School and Sistersville Elementary Closure/Consolidation

Known Relationships and Community Dynamics:

Arthur I. Boreman Elementary School and Sistersville Elementary School are deeply ingrained in the Tyler County community, fostering strong relationships with local residents, businesses, and organizations. Key aspects of these relationships include:

1. **Parent-Teacher Organization (PTO):** Active PTO involvement facilitates collaboration between parents, teachers, and administrators, enhancing student experiences and school decision-making.
2. **Local Business Partnerships:** Area businesses support the school through donations, sponsorships, and volunteerism, demonstrating a shared commitment to education and community development.
3. **Family Ties:** Generations of families have attended these schools, creating strong emotional bonds and a sense of tradition.
4. **Rural Identity:** The school is a vital institution in the rural community, providing access to education, resources, and opportunities that might otherwise be limited.

Community Characteristics:

1. **Close-knit:** Tyler County residents prioritize community and family ties.
2. **Rural:** The area's rural nature presents unique challenges and opportunities.
3. **Economically Diverse:** The community encompasses a range of socioeconomic backgrounds.

2. *How the existing known relationships could be impacted by the proposed action.*

Impact of Proposed School Closure/Consolidation on Existing Relationships:

The proposed closure/consolidation of Arthur I. Boreman Elementary School and Sistersville Elementary would likely have significant impacts on the existing relationships within the community:

Community Hub:

- Loss of central gathering place for community events and activities

- Reduced opportunities for socialization and community engagement
- Potential decline in community cohesion and sense of belonging

Parent-Teacher Organization (PTO):

- Disruption of established partnerships and communication channels
- Potential loss of volunteer base and community support
- Reduced parental involvement in education decision-making

Local Business Partnerships:

- Loss of direct connections with school administrators and teachers
- Reduced opportunities for sponsorships, donations, and volunteerism
- Potential economic impact on local businesses that rely on school traffic

Family Ties:

- Reduced sense of community ownership and pride

Rural Identity:

- Loss of community resource
- Potential decline in rural community viability and attractiveness
- Reduced access to education and resources for rural residents

Additional Concerns:

- Potential increase in transportation time and logistics for students
- Loss of community-based programs and services (e.g., after-school programs, sports)

Mitigation Strategies:

- Establish community outreach programs to maintain relationships
- Develop alternative community gathering spaces
- Foster partnerships with local businesses and organizations
- Provide support for affected families and students
- Ensure transparency and communication throughout the transition process

By understanding the potential impacts on existing relationships, decision-makers can develop strategies to minimize harm and ensure a smoother transition for the community.

3. The potential for new relationships that could be developed under the proposed action.

Tyler Consolidated Elementary School:

Arthur I. Boreman Elementary School and Sistersville Elementary School have been cornerstones of their respective communities, providing quality education and fostering growth for generations. However, consolidation into Tyler Consolidated Elementary School presents a unique opportunity to strengthen community bonds, enhance educational opportunities, and create a brighter future for all students.

Community Significance:

- **Local Identity:** The schools have been integral to community pride, hosting events, and fostering social connections.

- **Educational Heritage:** Dedicated teachers, staff, and administrators have shaped the educational landscape.

The Case for Consolidation:

- **Unified Community:** Consolidation brings together two communities, fostering a sense of unity and shared purpose.
- **Improved Resources:** One campus allows for optimized resource allocation, reducing duplication and enhancing efficiency.
- **Enhanced Educational Opportunities:** A larger student body enables a broader range of courses, extracurricular activities, and specialized programs.
- **Modern Facilities:** Tyler Consolidated Elementary School provides a state-of-the-art learning environment, promoting safety, accessibility, and innovation.
- **Increased Accessibility:** Consolidation simplifies transportation, reducing logistics and costs.
- **Economies of Scale:** Shared resources and reduced operational costs redirect funds toward educational initiatives.

Better Opportunities for All Students:

- **Diverse Student Body:** Consolidation promotes socialization, cultural understanding, and empathy.
- **Expanded Extracurricular Activities:** A larger student body supports more robust activities, clubs, and programs.
- **Increased Teacher Collaboration:** Shared expertise and resources enhance instructional strategies.
- **Personalized Learning:** Teachers can develop tailored approaches to meet individual students' needs.

Embracing Change, Strengthening Community:

Consolidation honors the legacy of both schools while paving the way for a brighter future. By uniting our communities, resources, and passion for education, we will create a vibrant, inclusive, and exceptional learning environment at Tyler Consolidated Elementary School.

Key Messages:

- We value the history and significance of both schools.
- Consolidation enhances educational opportunities and resources.
- One campus fosters unity, accessibility, and efficiency.
- Our commitment to educational excellence remains unwavering.

By embracing consolidation, we ensure that our students, teachers, and community thrive in a dynamic, supportive, and forward-thinking educational environment.

3.3. & 3.4. Public Notices and Hearings

County Procedures

Notice of Public Hearing(s)

The county must provide notice for all public hearing(s) required by section 3.4.a.1. All public hearing notices shall be advertised through a Class III legal advertisement for three weeks prior to the date of the hearing in a newspaper in general circulation in the locality of any school to be closed or consolidated and in the locality of any school that has been designated by the county to receive students from the schools to be closed or consolidated. The notice also shall be posted in all schools as provided in section 3.3.5 at least 30 days prior to the date of hearing.

Section 3.3 of WVBE Policy 6204 contains the requirements for the public hearing notice.

A copy of the notice shall be posted at all schools, bus garages, and maintenance areas in the county in conspicuous working areas, for all professional and service personnel to observe.

If the county will be applying for SBA funding, the procedures must be completed before the SBA will consider a project for funding, as further outlined in section 6. If the county will be utilizing local funding for a construction project related to the closure or consolidation, the procedures must be completed prior to the initiation of construction. For all other closures and consolidations, counties must complete the procedures on or before December 31st of the calendar year prior to the calendar year in which the closures or consolidations are to be effective.

Typed Copy of Legal Advertisement

Notice of Public Hearing

Tyler County Schools

W.Va. 18-5-13a

W.Va. Board of Education Policy 6204

Date and Time

January 6th, 2025, at 6:00pm (Arthur I. Boreman Elementary School)

January 21st, 2025, at 6:00pm (Sistersville Elementary School)

*Sign in 15 minutes prior to the meeting to speak.

Alternative Date and Time:

If, in the event of inclement weather or other factors beyond the control of the board, the hearing cannot take place at the date and time set forth above, the hearing will be January 22nd at the Tyler Consolidated Middle/High School Auditorium at 6:00 PM for AIB, 7:00 PM for SES and the vote immediately following the hearings.

Place:

Tyler Consolidated Middle/High School Auditorium, 1993 Silver Knight Drive, Sistersville WV, 26175

Proposed Action of the Board of Education of the County of Tyler, West Virginia:

Consolidation of Arthur I Boreman Elementary School and Sistersville Elementary School into a new Tyler Consolidated Elementary School (Name still to be determined)

Hearing Procedures: A representative of Tyler County Schools will provide an oral summary of the reasons and supporting data in connection with the proposed action of the board. Fifteen minutes prior to the public hearing, persons may sign a register for the purpose of making statements, offering testimony, and questioning school officials. Persons wishing to speak about the effects of

the proposed consolidation of Arthur I Boreman Elementary School and Sistersville Elementary School into a new Tyler Consolidated Elementary School, as well as those who wish to speak as members of the public, will be recognized in the order they have signed the register. Each person shall be limited to five minutes. Written statements or testimony may be submitted in lieu of oral statements prior to the end of the hearing. Any written statement will be given full consideration before the board takes final action.

Reasons for Supporting Data available for Public Inspection: Written reasons and supporting data in connection with the proposed action of the Board are available for public inspection beginning November 27th, 2024, through January 3rd, 2025, between the hours of 8:00am and 4:00pm. In the office of the Superintendent of Tyler County Schools, 114 Dodd Street, Middlebourne WV 26149. The reasons and supporting data will also be available at Arthur I Boreman School and Sistersville Elementary School.

Identify Schools: Arthur I Boreman Elementary School and Sistersville Elementary School

First Run: Wednesday, Nov. 27, 2024
Second Run: Wednesday, Dec. 4, 2024
Third Run: Wednesday, Dec. 11, 2024

Meeting Date and Time:

January 6th, 6:00pm at Tyler Consolidated Middle/High School - Auditorium
January 21st, 6:00pm at Tyler Consolidated Middle/High School - Auditorium
January 22nd, 6:00 pm at Tyler Consolidated Middle/High School – Auditorium (Alternate Date)

Type the dates the legal advertisement ran. Include dates for all closing or receiving school hearings. The county must hold SEPARATE hearings for both the closing and receiving schools.

Identify School(s)

First Run: Wednesday, November 27, 2024
Second Run: Wednesday, December 4, 2024
Third Run: Wednesday, December 11, 2024

Qualified Newspaper Name(s): Tyler Star News

Proof of Public Hearing(s) Notice

Provide in the appendix (do not insert here) a PDF copy of the following for each closing or receiving schools:

contain proof that the hearings were properly advertised with a class III legal advertisement. Such proof can be satisfied with:

- a notarized letter from the county's qualified newspaper(s) for legal notices, as defined by the West Virginia Secretary of State, that specifically states the three dates in which the newspaper ran the county's public hearing notification; or*
- a digital reproduction for each of the 3 required legal advertisements from the county's qualified newspaper(s) for legal notices, as defined by the West Virginia Secretary of State, where the full legal notification and date of publication is provided and legible.*

See Appendix for this Documentation

Public Hearing(s) Documentation and Formal Vote on the Closure(s) or Consolidation(s)

Provide in the appendix (do not insert here) a PDF copy of the following for each closing or receiving school(s):

Provide documentation of all hearings, motions, written public comments, a synopsis or transcript of verbal public comments, and other actions concerning the proposed school closings and consolidations.

*Section 3.4.a of WVBE Policy 6204 contains the requirements for the public hearing(s).
Section 3.5. of WVBE Policy 6204 contains the requirements for the formal vote(s).*

[See Appendix for this Documentation](#)

3.6. County Board Actions

County Procedures

County Board Vote(s)

After the vote and following compliance with sections 3.4 and 3.5, and prior to the implementation of any school closure or consolidation and following compliance with all statutory and regulatory provisions, the county must file a request for school closure and/or consolidation with the WVBE for approval and this request must contain:

- *A letter from the county superintendent providing the date the action was taken by the county board.*
- *The signed assurance pages contained in this template.*
- *Justification as provided by the impact statement and supporting data in section 3.2.*
- *Documentation of all hearings, motions, written public comments, a synopsis or transcript of verbal public comments, and any other related actions.*
- *Proof of proper Class III legal advertisement*
- *Below CEFP statement*
- *Below SBA statement*

Comprehensive Educational Facilities Plan (CEFP)

Identify if the proposed school closing or consolidation was included in the county's approved CEFP. If the county's approved CEFP did not contain the proposed closure or consolidation, the county must also submit a request to amend their CEFP. The required CEFP amendment forms shall be submitted to the WVDE Office of School Facilities staff simultaneously with the impact statement and supporting data that will be prepared for consideration by the WVBE. The CEFP amendment may be considered by the WVBE concurrently with the closure or consolidation request.

[Tyler County will be amending its CEFP to account for this change.](#)

School Building Authority of WV

Identify if the proposed school closing or consolidation is contingent upon receiving funding from the SBA.

[The closures, consolidation, and building of the new elementary are not contingent upon SBA funding.](#)

3.6. Superintendent Verification of Board Actions

Tyler County

Closure and Consolidation of Arthur I. Boreman Elementary and Sistersville Elementary School into Tyler Consolidated Elementary School.

Scheduled Dates of Hearings:

AIB:

- January 6, 2025 at 6 P.M. at Tyler Consolidated Middle/High School – Auditorium

SES:

- January 21, 2025 at 6 P.M. at Tyler Consolidated Middle/High School – Auditorium

AIB (Alternate):

- January 22, 2025 at 6 P.M. at Tyler Consolidated Middle/High School – Auditorium

SES (Alternate):

- January 22, 2025 at 7 P.M. at Tyler Consolidated Middle/High School – Auditorium

Scheduled Date of County Board Votes:

- January 21, 2025 at 7 P.M. at Tyler Consolidated Middle/High School – Auditorium
- (Alternate) January 22, 2025 – Tyler County Board will vote immediately following the hearings for AIB at 6 P.M. and SES at 7 P.M. - at Tyler Consolidated Middle/High School – Auditorium

Tyler County requests the West Virginia Board of Education approve the following.

Closure and Consolidation of Arthur I. Boreman Elementary and Sistersville Elementary School into a newly constructed Tyler Consolidated Elementary School.

- The county assures that the applicable sections of the W. Va. Codes §18-5-13 and §18-5-13a, and WVBE Policies 6200 and 6204 have been addressed.*
- This action is justified by the provided supplemental data and information pertinent to the following subjects: enrollment, facilities, finance, personnel, transportation, and educational programs.*
- Documentation of all hearings, motions, written public comments, a synopsis or transcript of verbal comments, and other actions concerning the proposed school closings and consolidations were provided in this document.*
- All hearings were properly advertised with a class III legal advertisement.*

Signature of county superintendent attesting to the completion of all requirements as stated in W. Va. Codes §18-5-13 and §18-5-13a and WVBE Policies 6200 and 6204.

A. Shane Highley

Superintendent

Date: 1/22/25

Appendix of Supporting Data

The list should include, at a minimum, the following data:

- 1. SBA Worksheet on Building Program Utilization for all affected schools (Required)*
- 2. Supporting Photographs, Floorplans, and other Documentation (As needed)*
- 3. SBA Facility Condition Documentation for all affected schools (Required)*
- 4. Proof of Public Hearing(s) Notice for all affected schools (Required)*
- 5. Public Hearing(s) Documentation for all affected schools (Required)*
- 6. Board minutes indicating the action of the board to approve the closure(s) (Required)*
- 7. Cover letter addressed to the State Superintendent of Schools (Required)*
- 8. Completed superintendent signature pages (Required)*
- 9. Most current October 1st certified enrollment for county (Required)*

Appendix 1

School Building Authority of West Virginia
BUILDING PROGRAM UTILIZATION WORKSHEET
 Worksheet #3
SBA FORM 301-C

NOTE: THIS FORM MAY BE SUBSTITUTED FOR A SIMILAR SBA-APPROVED DIGITAL INSTRUMENT

County: Tyler

School: Arthur I. Boreman Elementary Current Enrollment: 271

<i>Classroom Types</i>	<i>Number Of Classroom Types</i>	<i>x</i>	<i>Maximum Pupils/ Class Capacity</i>	<i>=</i>	<i>Total Program Capacity</i>
Pre – K Kindergarten	2		20		40
Kindergarten	2		20		40
General Purpose	20		25		500
Special Ed Level 1	4		6		24
Special Ed Level 2	1		12		12
TOTALS:	29				616

Program Utilization (271) divided by 616 times 100 = 44%
 Current Enrollment Total Program Capacity Program Utilization

SCHOOLS PROGRAM UTILIZATION = 44% Desirable Program Capacity = 85%

Instructions for Calculating Building Program Utilization

Elementary School – Calculate the number and type of classrooms using the maximum program capacity for each self-contained regular classroom. Assume for example – that all students are seated in a first period block without pullout programs. Do not include library/media, cafeteria, itinerant spaces, resource rooms, or optional academic classrooms such as art, music and computer labs that act as pullout programs to support the core curriculum.

Secondary School – Middle/Junior High School programs where various schedules exist, calculate the number and type of classrooms using the maximum program capacity for each regular or special classroom. Assume for example, that all students are seated in a first period block and exclude library/media, commons or any space that cannot be used for other course offerings in the daily capacity of each facility. The maximum capacity for instructional spaces for specialty classrooms is counted once. A specialty classroom may be available throughout the school day but due to its specialized design or equipment it is rendered impractical to use for other instructional purposes. School Building Authority of West Virginia

Appendix 1

BUILDING PROGRAM UTILIZATION WORKSHEET

Worksheet #3
SBA FORM 301-C

NOTE: THIS FORM MAY BE SUBSTITUTED FOR A SIMILAR SBA-APPROVED DIGITAL INSTRUMENT

County: Tyler

School: Sistersville Elementary Current Enrollment: 233

<i>Classroom Types</i>	<i>Number Of Classroom Types</i>	<i>x</i>	<i>Maximum Pupils/ Class Capacity</i>	<i>=</i>	<i>Total Program Capacity</i>
Pre – K Kindergarten	2		20		40
Kindergarten	2		20		40
General Purpose	16		25		400
Special Ed Level 1	5		6		30
Special Ed Level 2	1		12		12
TOTALS:	26				522

Program Utilization (233)
 Current Enrollment

divided by 522
 Total Program Capacity

times 100 = 45%
 Program Utilization

SCHOOLS PROGRAM UTILIZATION = 45% Desirable Program Capacity = 85%

Instructions for Calculating Building Program Utilization

Elementary School – Calculate the number and type of classrooms using the maximum program capacity for each self-contained regular classroom. Assume for example – that all students are seated in a first period block without pullout programs. Do not include library/media, cafeteria, itinerant spaces, resource rooms, or optional academic classrooms such as art, music and computer labs that act as pullout programs to support the core curriculum.

Secondary School – Middle/Junior High School programs where various schedules exist, calculate the number and type of classrooms using the maximum program capacity for each regular or special classroom. Assume for example, that all students are seated in a first period block and exclude library/media, commons or any space that cannot be used for other course offerings in the daily capacity of each facility. The maximum capacity for instructional spaces for specialty classrooms is counted once. A specialty classroom may be available throughout the school day but due to its specialized design or equipment it is rendered impractical to use for other instructional purposes. School Building Authority of West Virginia

Appendix 1

School Building Authority of West Virginia
BUILDING PROGRAM UTILIZATION WORKSHEET
 Worksheet #3
SBA FORM 301-C

NOTE: THIS FORM MAY BE SUBSTITUTED FOR A SIMILAR SBA-APPROVED DIGITAL INSTRUMENT

County: Tyler School: Tyler Consolidated Elementary Current Enrollment: 506

Classroom Types	Number Of Classroom Types	x	Maximum Pupils/ Class Capacity	=	Total Program Capacity
PRE-K	5	x	20	=	100
K	6	x	20	=	120
GRADES 1-5	27	x	25	=	675
SPE SELF-CONTAINED	2	x	8	=	16
TOTALS:					911

Program Utilization = $\frac{506}{911}$ divided by $\frac{911}{911}$ =

Current Enrollment Total Program Capacity

PROGRAM UTILIZATION = 56% Desirable Program Capacity = 85%

Instructions for Calculating Building Program Utilization

Elementary School – Calculate the number and type of classrooms using the maximum program capacity for each self-contained regular classroom. Assume for example – that all students are seated in a first period block without pullout programs. Do not include library/media, cafeteria, itinerant spaces, resource rooms, or optional academic classrooms such as art, music and computer labs that act as pullout programs to support the core curriculum.

SBA 301-C

Appendix 2 Supporting Photographs – Built 1974 AIB Elementary School:



Photo 1: VCT floor tile with asbestos in the mastic.



Photo 2: Vinyl flooring in gym storage with asbestos in the mastic.



Photo 3: Window panels/frames needing replaced



Photo 4: Storage areas



Photo 5: Storage areas



Photo 6: Washer/Dryer room



Photo 7: Cracked VCT – settling expansion joints



Photo 8: Cracked VCT – settling expansion joints



Photo 9: Cracked VCT – settling foundation



Photo 10: Cracking and wall separation



Photo 11: Multiple ceiling penetrations/Ceiling grid uneven



Photo 12: Electrical panel room – outdated panels



Photo 13: Old phone wiring – some parts of the system still utilized



Photo 14: Exterior windows needing replaced and spalling brick

Appendix 2 Supporting Photographs – Built 1975 Sistersville Elementary School:



Photo 1: Drywall ceiling separating from walls.



Photo 2: Rusting window frames.

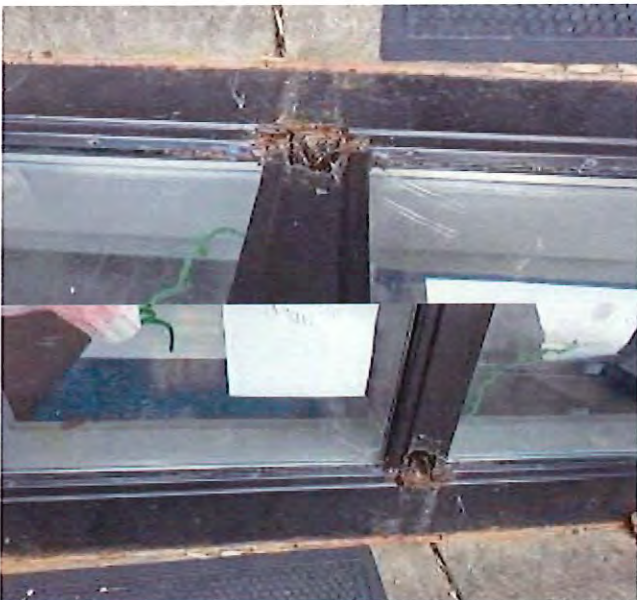


Photo 3: Window panels/frames needing replaced – rusting.



Photo 4: Cracked bricks



Photo 5: Missing/cracked bricks/spalling



Photo 6: Cracked bricks/mortar separation, concrete opening to base of building



Photo 7: Cracked VCT – settling expansion joints



Photo 8: Cracked concrete sidewalks - settling



Photo 9: Multiple ceiling penetrations/Ceiling grid uneven



Photo 10: Exterior windows needing replaced and spalling

Appendix 3
SBA Facility Condition
AIB Elementary:

School Building Authority of West Virginia
SBA Form 134 Data Collection Form
Campus Information Sheet

Full AE Firm Name	McKinley Architecture and Engineering
County Name	Tyler
Campus Name	Arthur I Boreman Elementary School
Campus Type	Elementary School
LEA ID	055201

Original Construction Yr.	1974
Assessment Date	10/29/13
Current Enrollment	324

School Photo



Insert Photo Here

Pavements						
System	Material	Year Installed if different from Building	Condition	SF	Notes	Message
Pedestrian Pavements	Concrete	2014	3 - Average	8,000	Not all replaced	
Site Pavements - Parking	Asphalt	2017	4 - Above Average	47,000		3

Permanent Buildings										
Record	Building Name	Predominant Building Type	Include building in Assessment	Year Built	Located in Floodplains or Floodway?	GSF	Basement (Y/N)	# Floors (incl. Bsm)	Message	Evaluation Status
1	AB Elementary	Classroom	Y	1972	No	50,700	N	1		29 of 29 systems have been evaluated
2										
3										
4										
5										
6										
7										
8										
9										
10										
Total GSF:						50,700				

Portable Buildings					
Record	Building Name	Year Installed	GSF	Message	
1					
2					
3					
4					
5					
6					
7					
8					
9					
10					
Total GSF:				-	

Overview of Findings
Exterior parking lot, safety, security and pedestrian lighting needs upgraded.
Playground equipment and surfaces out of compliance. Fencing not present or needs upgraded.
Interior lighting ballasts failing.
Lockers insufficiently sized.
Gym flooring ACI. Mats in other areas need abated.
Interior doors hardware not code compliant needs replaced. Classroom doors need classroom security.
Exhaust fans need replaced.
Phone system outdated and malfunctioning.
Electronic hold-opens recommended of rated high use doors to reduce wear and tear and enhance life safety.
Sanitary slope, drainage issues.
Sprinkler service and domestic line need replaced.
Fire Alarm components, pump and Electrical main switch gear outdated. Maintaining proprietary Access Control system problematic. Data systems insufficient.
Masonry corrections around building. Drainage issues around building. Slabs on grade degrading in areas.
Windows need replaced.

School Building Authority of West Virginia
SBA Form 134 Data Collection Form
Building Information Sheet

Building	AIB Elementary	Year Built	1972	# Floors	1
Gross Square Feet	50,700	Basement (Y/N)	N	(incl. Bsmt)	

System	Material	Count	Year Installed if different from Building	Condition	Notes	29 of 29 systems have been evaluated	Messages
Conveying Systems				Not Present			Please confirm absence of system with Facility Manager.
Electrical - Branch Wiring				3 - Average			
Electrical - Lighting	Fluorescent			1 - Inadequate	Interior & Exterior parking lot lighting needs upgraded.		
Electrical - Emergency Lighting and Exit Signs				3 - Average			
Electrical - Service and Distribution				2 - Below Average	Main system is original and of an obsolete brand, building addition service is of a reputable brand.		
Equipment & Furnishings - Institutional Equipment	Includes Commercial			4 - Above Average			
Exterior Enclosure - Exterior Doors	Metal		2009	3 - Average			
Exterior Enclosure - Exterior Wall Finishes	Masonry			2 - Below Average			
Exterior Enclosure - Exterior Windows	Double Pane, Fixed, Al Frame			2 - Below Average			
Fire Protection - Fire Alarm & Detection				2 - Below Average	Panel appears to not allow additional zones. Smoke detectors appear to be original.		
Fire Protection - Sprinklers and Standpipes				1 - Inadequate	Entrance service size inadequate requiring pump and tank.		
HVAC - Terminal & Package Units			2010	3 - Average			1 Terminal & Package Units are present, Cooling & Heat Generating Systems cannot be present.
HVAC - Distribution System			2010	3 - Average	Some ductwork is original.		
HVAC - Heat Generating Systems				Not Present			Please confirm absence of system with Facility Manager.
HVAC - Cooling Generating Systems				Not Present			Please confirm absence of system with Facility Manager.
HVAC - Controls and Instrumentation			2010	3 - Average			
Interior Construction - Interior Doors	Steel			2 - Below Average			
Interior Construction - Specialties and Casework				5 - Excellent			
Interior Finishes - Ceiling Finishes				Not Present	Predominately lay-in acoustic ceiling panels.		Please confirm absence of system with Facility Manager.
Interior Finishes - Floor Finishes	Ceramic Tile			5 - Excellent			
Interior Finishes - Gymnasium Floor Finishes				3 - Average			
Interior Finishes - Wall Finishes	Painted CMU			4 - Above Average			
Plumbing - Domestic Water Distribution				2 - Below Average	Water pressure & water flow issues.		
Plumbing - Fixtures	Manual			2 - Below Average	Water Closets are tank type, urinals have manual valves, has gang hand wash stations. Exterior drains replaced 2019, interior roof drain piping existing. Drainage at front door inadequate during hard rains.		
Plumbing - Rain Water Drainage				3 - Average			
Plumbing - Sanitary Sewer				1 - Inadequate	Piping beginning to corrode and expel metal fragment into the treatment plant.		
Roofing - Roof Coverings	Membrane, Direct Gue		2019	5 - Excellent			
Security System			2009	3 - Average			
Technology Infrastructure			2000	2 - Below Average			

School Building Authority of West Virginia
 SBA Form 134 Data Collection Form
 Facility General Information Sheet

1 - Facility General Information Worksheet

LEA ID:	085201	Assessment Date:	10/29/19
County:	Tyler	Total Gross Square Feet:	50,700
Facility Name:	Arthur I Boreman Elementary School	Original Year of Construction:	1974

Energy Indexes

(List the total amount of each fuel source used for one year)

<u>Source (Units)</u>	<u>Consumption per Year</u>	<u>Conversion (BTU/Unit)</u>	<u>Total BTU</u>
Electric (Kilowatt-Hrs)	719,927	3,412	2,456,491,714
Natural Gas (MCF) --OR--	1,348	1,037,000	1,397,876,000
Natural Gas (Decootherms)		1,000,000	-
Coal (Tons)		24,000,000	-
#2 Fuel Oil (Gallons)		138,874	-
Propane (Pounds)		21,600	-
Used Oil (Gallons)		125,000	-
Wood Chips (Tons)		16,500,000	-
Other (specify)			
Amount:			
Units:			-
		Total BTU:	3,854,367,714
		Energy Utilization Index (EUI):	76,023

School Building Authority of West Virginia
 SBA Form 134 Data Collection Form
 Site Evaluation Sheet

LEA ID:	085201	Assessment Date:	10/29/19
County:	Tyler	Total Gross Square Feet:	50,700
Facility Name:	Arthur I Boreman Elementary Sch	Original Year of Construction:	1974

2 - Site Evaluation Worksheet

Site

City or Rural:	Rural
Actual Acres:	5.3
Useable Acres:	5.3
Site adequate for expansion:	Yes
Are public parks/areas adjacent:	Yes
% site out of flood plain:	100%
% site in flood plain:	0%

Site Remarks:

Overall Site Condition:

4-Above Average

Drainage

Drainage Remarks:

Overall Drainage Condition:

4-Above Average

Parking

Parking Adequately Lit:

Adequacy of Parking:

No

4-Above Average

Parking Remarks:

Overall Parking Condition:

3-Average

Bus Loading

Bus Loading Adequate:

Bus Loading Remarks:

Overall Bus loading Condition:

Yes

3-Average

Access Roads

Adequacy of On-Site Access Roads:

Adequacy of Off-Site Access Roads:

3-Average

3-Average

Access Roads Remarks:

Overall Access Road Condition:

3-Average

Playfields/Playcourts

Adequacy of Playfields:

Adequacy of Playcourts:

4-Above Average
4-Above Average

Playfields/Playcourts Remarks:

Overall Playfield/Playcourts Condition:

4-Above Average

Site Utilities

Electrical Services:

Phase:

Voltage:

Amps:

Electric Utility Company:

Main Service Feed into Building:

3
480/277
600
Mon Power
Underground

Electrical Service Remarks:

Overall Electrical Service Condition:

3-Average

Fuel Sources:

Natural Gas:

Coal:

Fuel Oils:

Propane:

Other (Specify):

Fuel Line Size (inches):

Fuel Utility Company:

Yes
3

Fuel Sources Remarks:

Overall Fuel Sources Condition:

Dominion
3-Average

Water Sources:

Public:

Well:

Water Line Size (inches):

Water Utility Company:

Yes
Yes
1.5 - 2
Tyler PSD

Water Sources Remarks:

Overall Water Sources Condition:

Well used only for Fire System
2-Below Average

Sewage Systems:

Public:

Yes

Septic:

Other (Specify):

Public Service District (PSD):

Tyler PSD

Sewage System Remarks:

Overall Sewage System Condition:

3-Average

**School Building Authority of West Virginia
SBA Form 134 Data Collection Form
Building Component Evaluation Sheet**

LEA ID:	085201	Assessment Date:	10/29/19
County:	Tyler	Total Gross Square Feet:	50,700
Facility Name:	Arthur I Boreman Elementary Sch	Original Year of Construction:	1974

3 - Building Component Evaluation Worksheet

Building Structures:

Type:	Other (Specify in cell to right)	Space Frame
Building Structures Remarks:	Additions Load Bearing	
Overall Building Structure Condition:	2-Below Average	

Floor Structures:

Steel Joist/Concrete (floor area SF):		
Wood Joists (floor area SF):		
Slab on Grade (floor area SF):	50,700	
Other (specify) / Floor area SF:		
Floor Structure Remarks:		
Overall Floor Structure Condition:	2-Below Average	

Roof:

Roof Structure:	Steel Joists	Space Frame
Roof Structures Remarks:	Additions are steel Joists	
Overall Roof Condition:	3-Average	

Building Systems:

The systems below are addressed in the FCA data collection tool.

- Roof Coverings
- Wall Finishes
- Ceiling Finishes
- Floor Finishes
- Doors
- Windows
- HVAC
- Electrical
- Fire Alarm

--	--

Technology Infrastructure:

	<u>Presence</u>	<u>Condition</u>
Sufficient Electrical Capacity:	Yes	3-Average
Power Receptacles Availability:	Yes	3-Average

ID Network Type (if available):
Inventory Records Hardware
Other (specify):

Yes	3-Average
Yes	3-Average
	3-Average

Deficiencies:

Technology Remarks:

Overall Technology Infrastructure Cond

3-Average

Technology Assessment:

Teacher Training:
Software Use:
Purchasing Practices:
Network Administration:
Inventory Records
Other (specify):

4-Above Average
5-Excellent
5-Excellent
3-Average
3-Average

--

Deficiencies:

Technology Remarks:

Overall Technology Condition:

4-Above Average

School Access Safety Audit:

Planning:
Deterrence:
Detection:
Delay:
Communication:
Evacuation:

3-Average
4-Above Average
3-Average
3-Average
3-Average
3-Average

Safety Remarks:

Overall Access Safety Condition:

3-Average

School Building Authority of West Virginia
SBA Form 134 Data Collection Form
Campus Information Sheet

Full AE Firm Name	McKinley Architecture and Engineering
County Name	Tyler
Campus Name	Sistersville Elementary School
Campus Type	Elementary School
LEA ID	085202

Original Construction Yr.	1972
Assessment Date	10/29/19
Current Enrollment	283

School Photo



Insert Photo Here

Pavements						
System	Material	Year Installed if different from Building	Condition	SF	Notes	Message
Pedestrian Pavements	Concrete	2015	2 - Below Average	8,000	Not all replaced	
Site Pavements - Parking	Asphalt	2018	4 - Above Average	56,000		3

Permanent Buildings										
Record	Building Name	Predominant Building Type	Include building in Assessment	Year Built	Located in Floodplain or Floodway?	GSF	Basement (Y/N)	# Floors (incl. Bsm't)	Message	Evaluation Status
1	Sistersville Elementary	Classroom	Y	1975	No	49,200	N	1		23 of 23 systems have been evaluated.
2										
3										
4										
5										
6										
7										
8										
9										
10										
Total GSF:						49,200				

Portable Buildings					
Record	Building Name	Year Installed	GSF	Message	
1					
2					
3					
4					
5					
6					
7					
8					
9					
10					
Total GSF:				-	

Overview of Findings
Exterior parking lot, safety, security and pedestrian lighting needs upgraded.
Playground equipment and surfaces out of compliance. Site Fencing not present.
Interior lighting ballasts failing.
Lockers insufficiently sized.
Gym flooring ACT. Mastics in other areas need abated.
Interior doors hardware not code compliant needs replaced. Classroom doors need classroom security.
Exhaust fans need replaced.
Phone system outdated and malfunctioning.
Retaining wall failing. Site drainage issues. Secondary access road severely deficient.
Sanitary slope, drainage issues.
Electronic hold-opens recommended of rated high use doors to reduce wear and tear and enhance life safety.
Fire Alarm components and Electrical main switch gear outdated. Maintaining proprietary Access Control system problematic. Data systems insufficient.
Masonry corrections around building. Drainage issues around building.
Windows need replaced.

School Building Authority of West Virginia
SBA Form 134 Data Collection Form
Building Information Sheet

Building	Sistersville Elementary	Year Built	1975	# Floors	
Gross Square Feet	49,200	Basement (Y/N)	N	(incl. Bsm't)	1

System	Material	Count	Year Installed if Different from Building	Condition	Notes	23 of 29 systems have been evaluated	Messages
Conveying Systems				Not Present			Please confirm absence of system with Facility Manager.
Electrical - Branch Wiring				2 - Below Average			
Electrical - Lighting	Fluorescent			2 - Below Average	Interior & Exterior parking lot lighting needs upgraded.		
Electrical - Emergency Lighting and Exit Signs				3 - Average			
Electrical - Service and Distribution				2 - Below Average	Main system is original and of an obscure brand, building addition service is of a reputable brand.		
Equipment & Furnishings - Instructional Equipment	Includes Commercial			4 - Above Average			
Exterior Enclosure - Exterior Doors	Metal		2009	3 - Average			
Exterior Enclosure - Exterior Wall Finishes	Masonry			2 - Below Average			
Exterior Enclosure - Exterior Windows	Double Pane, Fixed, All Frame			2 - Below Average			
Fire Protection - Fire Alarm & Detection				2 - Below Average	Panel appears to not allow additional zones. Smoke detectors appear to be original.		
Fire Protection - Sprinklers and Standpipes				1 - Inadequate	Entrance service size inadequate requiring pump and tank.		4 Terminal & Package Units are present, Cooling & Heat Generating Systems cannot be present.
HVAC - Terminal & Package Units			2010	3 - Average			
HVAC - Distribution System			2010	3 - Average	Some ductwork is original.		
HVAC - Heat Generating Systems				Not Present			Please confirm absence of system with Facility Manager.
HVAC - Cooling Generating Systems				Not Present			Please confirm absence of system with Facility Manager.
HVAC - Controls and Instrumentation			2000	3 - Average			
Interior Construction - Interior Doors	Steel			2 - Below Average			
Interior Construction - Specialties and Casework			2019	5 - Excellent			
Interior Finishes - Ceiling Finishes				Not Present	Predominately (9) in acoustic ceiling panels.		Please confirm absence of system with Facility Manager.
Interior Finishes - Floor Finishes	Ceramic Tile			5 - Excellent			
Interior Finishes - Gymnasium Floor Finishes				1 - Inadequate	MM and VCI		
Interior Finishes - Wall Finishes	Painted CMU			4 - Above Average			
Plumbing - Domestic Water Distribution				3 - Average			
Plumbing - Fixtures	Manual			2 - Below Average	Water Closets are tank type, urinals have battery operated valves, has gang hand wash stations.		
Plumbing - Rain Water Drainage				3 - Average	Exterior dripts replaced 2019, interior roof drain piping existing.		
Plumbing - Sanitary Sewer				1 - Inadequate	Piping beginning to corrode and roughness is causing blockages.		
Roofing - Roof Coverings	Membrane, Direct Gire		2019	5 - Excellent			
Security System			2009	3 - Average			
Technology Infrastructure			2000	2 - Below Average			

School Building Authority of West Virginia
 SBA Form 134 Data Collection Form
 Facility General Information Sheet

1 - Facility General Information Worksheet

LEA ID:	085202	Assessment Date:	10/29/19
County:	Tyler	Total Gross Square Feet:	49,200
Facility Name:	Sistersville Elementary School	Original Year of Construction:	1972

Energy Indexes

(List the total amount of each fuel source used for one year)

<u>Source (Units)</u>	<u>Consumption per Year</u>	<u>Conversion (BTU/Unit)</u>	<u>Total BTU</u>
Electric (Kilowatt-Hrs)	713,110	3,412	2,433,231,155
Natural Gas (MCF) --OR--	3,370	1,037,000	3,494,690,000
Natural Gas (Decootherms)		1,000,000	-
Coal (Tons)		24,000,000	-
#2 Fuel Oil (Gallons)		138,874	-
Propane (Pounds)		21,600	-
Used Oil (Gallons)		125,000	-
Wood Chips (Tons)		16,500,000	-
Other (specify)			
Amount:			
Units:			
		Total BTU:	5,927,921,155
		Energy Utilization Index (EUI):	120,486

**School Building Authority of West Virginia
SBA Form 134 Data Collection Form
Site Evaluation Sheet**

LEA ID:	085202	Assessment Date:	10/29/19
County:	Tyler	Total Gross Square Feet:	49,200
Facility Name:	Sistersville Elementary School	Original Year of Construction:	1972

2 - Site Evaluation Worksheet

Site

City or Rural:	Rural
Actual Acres:	7.6
Useable Acres:	6
Site adequate for expansion:	Yes
Are public parks/areas adjacent:	Yes
% site out of flood plain:	100%
% site in flood plain:	0%
Site Remarks:	
Overall Site Condition:	3-Average

Drainage

Drainage Remarks:	
Overall Drainage Condition:	2-Below Average

Parking

Parking Adequately Lit:	No
Adequacy of Parking:	2-Below Average
Parking Remarks:	
Overall Parking Condition:	3-Average

Bus Loading

Bus Loading Adequate:	No
Bus Loading Remarks:	
Overall Bus loading Condition:	2-Below Average

Access Roads

Adequacy of On-Site Access Roads:	3-Average
Adequacy of Off-Site Access Roads:	2-Below Average

Access Roads Remarks:

Overall Access Road Condition:

2-Below Average

Playfields/Playcourts

Adequacy of Playfields:

Adequacy of Playcourts:

2-Below Average
2-Below Average

Playfields/Playcourts Remarks:

Overall Playfield/Playcourts Condition:

Inadequate for size of school
2-Below Average

Site Utilities

Electrical Services:

Phase:

Voltage:

Amps:

Electric Utility Company:

Main Service Feed into Building:

3
480/277
600
Mon Power
Underground

Electrical Service Remarks:

Overall Electrical Service Condition:

2-Below Average

Fuel Sources:

Natural Gas:

Coal:

Fuel Oils:

Propane:

Other (Specify):

Fuel Line Size (inches):

Fuel Utility Company:

Yes
4
Dominion

Fuel Sources Remarks:

Overall Fuel Sources Condition:

3-Average

Water Sources:

Public:

Well:

Water Line Size (inches):

Water Utility Company:

Yes
4
Sistersville Water Dept

Water Sources Remarks:

Overall Water Sources Condition:

3-Average

Sewage Systems:

Public:

Yes

Septic:

Other (Specify):

Public Service District (PSD):

Sistersville

Sewage System Remarks:

Overall Sewage System Condition:

3-Average

**School Building Authority of West Virginia
SBA Form 134 Data Collection Form
Building Component Evaluation Sheet**

LEA ID:	085202	Assessment Date:	10/29/19
County:	Tyler	Total Gross Square Feet:	49,200
Facility Name:	Sistersville Elementary School	Original Year of Construction:	1972

3 - Building Component Evaluation Worksheet

Building Structures:

Type:	Steel Frame	
Building Structures Remarks:	Load Bearing Additions	
Overall Building Structure Condition:	2-Below Average	

Floor Structures:

Steel Joist/Concrete (floor area SF):		
Wood Joists (floor area SF):		
Slab on Grade (floor area SF):	49,200	
Other (specify) / Floor area SF:		
Floor Structure Remarks:		
Overall Floor Structure Condition:	3-Average	

Roof:

Roof Structure:	Steel Joists	Steel Space Frame
Roof Structures Remarks:		
Overall Roof Condition:	3-Average	

Building Systems:

The systems below are addressed in the FCA data collection tool.

Roof Coverings		
Wall Finishes		
Ceiling Finishes		
Floor Finishes		
Doors		
Windows		
HVAC		
Electrical		
Fire Alarm		

Technology Infrastructure:

	<u>Presence</u>	<u>Condition</u>
Sufficient Electrical Capacity:	Yes	3-Average
Power Receptacles Availability:	Yes	3-Average

ID Network Type (if available):
Inventory Records Hardware
Other (specify):

Yes	3-Average
Yes	3-Average

Deficiencies:

Technology Remarks:

Overall Technology Infrastructure Cond

3-Average

Technology Assessment:

Teacher Training:
Software Use:
Purchasing Practices:
Network Administration:
Inventory Records
Other (specify):

4-Above Average
5-Excellent
5-Excellent
3-Average
3-Average

--

Deficiencies:

Technology Remarks:

Overall Technology Condition:

4-Above Average

School Access Safety Audit:

Planning:
Deterrence:
Detection:
Delay:
Communication:
Evacuation:

3-Average
4-Above Average
3-Average
3-Average
3-Average
3-Average

Safety Remarks:

Overall Access Safety Condition:

--

3-Average

Appendix 3
SBA Facility Condition
SES Elementary:

School Building Authority of West Virginia
SBA Form 134 Data Collection Form
Facility Spaces Evaluation / Utilization Analysis Sheet

LEA ID:	085201	Assessment Date:	43767
County:	Tyler	Total Gross Square Feet:	50700
Facility Name:	Arthur I Boreman Elementary School	Original Year of Construction:	1974

Individual School Utilization Analysis								
	Grade Config	Age of Facility	No. of Renovations	Square Ft	Portables	Location (City, St)		
Lowest Grade Level:	PK	PK - 5		50,700	0	Middlebourne, WV		
Highest Grade Level:	5							
Complete ONLY the column below associated with the highest grade level for this school.								
Classroom Type	Number of Class Types (ES)	Number of Class Types (MS)	Number of Class Types (HS)	X	Max Students Per Room	=	Total Program Capacity	Utilization Calculation
Pre-Kindergarten (Full Day)	2				20		40	Current Enrollment
Kindergarten (Full Day)	2				20		40	324
General Purpose Classroom	20				25		500	Total Program Capacity
Computer Lab	n/a				25		0	616
Art Lab	n/a				25		0	
Music Classroom	n/a				25		0	
Special Ed Pull-out					0		0	
Special Ed Level 1: (PK-5)	4				6		24	
Special Ed Level 1: (6-12)	n/a				12		0	
Special Ed Level 2: (PK-12)	1				12		12	
Special Ed Level 3: (PK-12)					8		0	
Special Education Classroom					6		0	Utilization Calculation
Technical Education/ Voc Ag	n/a				20		0	53%
Physical Education	n/a				50		0	
Science Classroom/Lab	n/a				25		0	Desirable Utilization
Business Education	n/a				25		0	85%
Family Liv/Cons Economics	n/a				25		0	
Totals	29	0	0				616	Difference
								-32%

School Building Authority of West Virginia
SBA Form 134 Data Collection Form
School Improvement Cost Summary Sheet

LEA ID:	085201	Assessment Date:	10/29/19
County:	Tyler	Total Gross Square Feet:	50700
Facility Name:	Arthur I Boreman Elementary School	Original Year of Construction:	1974
Design Capacity Enrollment:	616		

Please note, the current-year costs shown below are intended to provide a Rough Order of Magnitude (ROM) estimate of costs. While they are appropriate for high-level capital forecasting, they should not be relied upon for determining specific project funding values. Actual project costs will likely deviate from the presented values due to a variety of factors including, but not limited to, hard and soft cost fluctuations and the actual date of construction for the intended project. Therefore, detailed cost estimates are recommended to validate funding requirements prior to obligating funds for facility replacement or renovation.

Improvement Item	Unit	Quantity	Unit Cost	Item Cost	Remarks
1. Site Work					
Land Acquisition	Acres			\$ -	
Excavation/Grade	CUB FT			\$ -	
Drainage	LIN FT			\$ -	
Walks (6 ft wide)	SQ FT			\$ -	
Parking	SQ FT			\$ -	
Bus Loading	SQ FT			\$ -	
Roads	SQ FT			\$ -	
Playing Fields	SQ FT			\$ -	
Other (Describe in 'Remarks')				\$ -	
Other (Describe in 'Remarks')				\$ -	
Other (Describe in 'Remarks')				\$ -	
Sub-Total				<u>\$ -</u>	

Improvement Item	Unit	Quantity	Unit Cost	Item Cost	Remarks
2. Renovations, Exterior					
Wall Structure	SQ FT			\$ -	
Floor Structure	SQ FT			\$ -	
Roof Structure	SQ FT			\$ -	
Wall Facing	SQ FT	1	\$ 38,451.00	\$ 38,451.00	
Windows	EACH	1	\$ 435,614.00	\$ 435,614.00	
Doors/Frames	EACH	1	\$ 133,848.00	\$ 133,848.00	
Roofing	SQ FT			\$ -	
Coping/Parapet	LIN FT			\$ -	
Painting	SQ FT			\$ -	
Other (Describe in 'Remarks')				\$ -	
Other (Describe in 'Remarks')				\$ -	
Other (Describe in 'Remarks')				\$ -	
Sub-Total				<u>\$ 607,913.00</u>	

Improvement Item	Unit	Quantity	Unit Cost	Item Cost	Remarks
3. Renovations, Interior					
Floor Covering	SQ FT			\$ -	
Patch & Painting	SQ FT	1	\$ 414,685.00	\$ 414,685.00	
Ceiling Finish	SQ FT			\$ -	
Plumbing	SQ FT	1	\$ 1,209,986.00	\$ 1,209,986.00	
Heating/Ventilating	SQ FT	1	\$ 1,153,526.00	\$ 1,153,526.00	
Air Conditioning	SQ FT			\$ -	
Lighting	SQ FT	1	\$ 830,344.00	\$ 830,344.00	
Wiring	SQ FT	1	\$ 524,197.00	\$ 524,197.00	
Fire Alarm	SQ FT	1	\$ 462,871.00	\$ 462,871.00	
Communication System	SQ FT	1	\$ 60,840.00	\$ 60,840.00	
Technology	SQ FT	1	\$ 170,352.00	\$ 170,352.00	
Interior Doors	EACH	1	\$ 284,731.00	\$ 284,731.00	
Other (Describe in 'Remarks')				\$ -	
Other (Describe in 'Remarks')				\$ -	
Other (Describe in 'Remarks')				\$ -	
Sub-Total				<u>\$ 5,111,532.00</u>	

Improvement Item	Unit	Quantity	Unit Cost	Item Cost	Remarks
4. Building Additions Including Furniture, Furnishings & Equipment					

New Construction
Renovation

3%	6,096,653

\$ -
\$ 182,899.59

Sub-Total

\$ 182,899.59

Grand Total Project Cost

\$ 6,645,351.77

Reference Data from Prior Sheets (for WVDE Use Only):

Energy Utilization Index:	76,023
Current Enrollment:	324
Program Capacity:	616
Utilization Calculation:	53%
Building(s) in Floodplain/Floodway:	0

**School Building Authority of West Virginia
SBA Form 134 Data Collection Form
School Improvement Cost Summary Sheet**

LEA ID:	085202	Assessment Date:	10/29/19
County:	Tyler	Total Gross Square Feet:	49200
Facility Name:	Sistersville Elementary School	Original Year of Construction:	1972
Design Capacity Enrollment:	522		

Please note, the current-year costs shown below are intended to provide a Rough Order of Magnitude (ROM) estimate of costs. While they are appropriate for high-level capital forecasting, they should not be relied upon for determining specific project funding values. Actual project costs will likely deviate from the presented values due to a variety of factors including, but not limited to, hard and soft cost fluctuations and the actual date of construction for the intended project. Therefore, detailed cost estimates are recommended to validate funding requirements prior to obligating funds for facility replacement or renovation.

Improvement Item

1. Site Work

Improvement Item	Unit	Quantity	Unit Cost	Item Cost	Remarks
Land Acquisition	Acres			\$ -	
Excavation/Grade	CUB FT			\$ -	
Drainage	LIN FT			\$ -	
Walks (6 ft wide)	SQ FT	1	\$ 12,400.00	\$ 12,400.00	Pedestrian Paving
Parking	SQ FT			\$ -	
Bus Loading	SQ FT			\$ -	
Roads	SQ FT			\$ -	
Playing Fields	SQ FT			\$ -	
Other (Describe in 'Remarks')				\$ -	
Other (Describe in 'Remarks')				\$ -	
Other (Describe in 'Remarks')				\$ -	
Sub-Total				<u>\$ 12,400.00</u>	

2. Renovations, Exterior

Improvement Item	Unit	Quantity	Unit Cost	Item Cost	Remarks
Wall Structure	SQ FT			\$ -	
Floor Structure	SQ FT			\$ -	
Roof Structure	SQ FT			\$ -	
Wall Facing	SQ FT	1	\$ 37,313.00	\$ 37,313.00	
Windows	EACH	1	\$ 422,726.00	\$ 422,726.00	
Doors/Frames	EACH	1	\$ 129,888.00	\$ 129,888.00	
Roofing	SQ FT			\$ -	
Coping/Parapet	LIN FT			\$ -	
Painting	SQ FT			\$ -	
Other (Describe in 'Remarks')				\$ -	
Other (Describe in 'Remarks')				\$ -	
Other (Describe in 'Remarks')				\$ -	
Sub-Total				<u>\$ 589,927.00</u>	

3. Renovations, Interior

Improvement Item	Unit	Quantity	Unit Cost	Item Cost	Remarks
Floor Covering	SQ FT	1	\$ 595,123.00	\$ 595,123.00	Gymnasium Floor Finishes
Patch & Painting	SQ FT	1	\$ 402,417.00	\$ 402,417.00	
Ceiling Finish	SQ FT			\$ -	
Plumbing	SQ FT	1	\$ 1,174,189.00	\$ 1,174,189.00	
Heating/Ventilating	SQ FT	1	\$ 1,119,398.00	\$ 1,119,398.00	
Air Conditioning	SQ FT			\$ -	
Lighting	SQ FT	1	\$ 607,404.00	\$ 607,404.00	
Wiring	SQ FT	1	\$ 648,023.00	\$ 648,023.00	
Fire Alarm	SQ FT	1	\$ 449,176.00	\$ 449,176.00	
Communication System	SQ FT	1	\$ 118,080.00	\$ 118,080.00	
Technology	SQ FT	1	\$ 165,312.00	\$ 165,312.00	
Interior Doors	EACH	1	\$ 276,307.00	\$ 276,307.00	
Other (Describe in 'Remarks')				\$ -	
Other (Describe in 'Remarks')				\$ -	
Other (Describe in 'Remarks')				\$ -	
Sub-Total				<u>\$ 5,555,429.00</u>	

4. Building Additions Including Furniture, Furnishings & Equipment

Improvement Item	Unit	Quantity	Unit Cost	Item Cost	Remarks

Administration (ES, MS, HS)	SQ FT			\$ -	
Student Services (ES, MS, HS)	SQ FT			\$ -	
Kindergarten (ES)	SQ FT			\$ -	
Primary (ES)	SQ FT			\$ -	
Media Center (ES)	SQ FT			\$ -	
Basic (MS, HS)	SQ FT			\$ -	
Reading (MS, HS)	SQ FT			\$ -	
Health Education (MS, HS)	SQ FT			\$ -	
Computer Lab (ES, MS, HS)	SQ FT			\$ -	
Inst. Mat. Center (MS, HS)	SQ FT			\$ -	
Home Economics (MS, HS)	SQ FT			\$ -	
Art (ES, MS, HS)	SQ FT			\$ -	
Ind. Technology (MS, HS)	SQ FT			\$ -	
Music (ES, MS, HS)	SQ FT			\$ -	
Physical Education (MS, HS)	SQ FT			\$ -	
Auditorium (MS, HS)	SQ FT			\$ -	
Special Education (ES, MS, HS)	SQ FT			\$ -	
Multi-Purpose (ES)	SQ FT			\$ -	
Kitchen (ES, MS, HS)	SQ FT			\$ -	
Dining (MS, HS)	SQ FT			\$ -	
Business Education (MS)	SQ FT			\$ -	
Co-Op Education (MS)	SQ FT			\$ -	
Drivers Education (MS)	SQ FT			\$ -	
Staff/Faculty (ES, MS, HS)	SQ FT			\$ -	
Toilets/Fixtures (ES, MS, HS)	SQ FT			\$ -	
Storage General (ES, MS, HS)	SQ FT			\$ -	
Storage Instructional (ES, MS, HS)	SQ FT			\$ -	
Custodial (ES, MS, HS)	SQ FT			\$ -	
Mechanical (MS, HS)	SQ FT			\$ -	
Other (Describe in 'Remarks')		1	\$ 366,048.00	\$ 366,048.00	Institutional Equipment
Other (Describe in 'Remarks')				\$ -	
Other (Describe in 'Remarks')				\$ -	
Circulation	30%			\$ -	
Sub-Total				<u>\$ 366,048.00</u>	

5. Special Construction	Unit	Quantity	Unit Cost	Item Cost	Remarks
Elevator	EACH			\$ -	
Sprinkler Systems	SQ FT			\$ -	
Kitchen Equipment	ALL			\$ -	
Waste Treatment	EACH			\$ -	
Other (Describe in 'Remarks')				\$ -	
Other (Describe in 'Remarks')				\$ -	
Other (Describe in 'Remarks')				\$ -	
Sub-Total				<u>\$ -</u>	

6. Other Special Costs	Quantity	Unit Cost	Item Cost	Remarks
			\$ -	
			\$ -	
			\$ -	
Sub-Total			<u>\$ -</u>	

7. Architectural/Engineering Fees	%	Quantity	Item Cost	Remarks
New Construction			\$ -	
Renovations	6%	6,523,804	\$ 391,428.24	
Sub-Total			<u>\$ 391,428.24</u>	

8. Miscellaneous	Unit	Quantity	Unit Cost	Item Cost	Remarks
Survey	EACH			\$ -	
Soil Inv.	EACH			\$ -	
Other (Describe in 'Remarks')				\$ -	
Other (Describe in 'Remarks')				\$ -	
Other (Describe in 'Remarks')				\$ -	
Sub-Total				<u>\$ -</u>	

9. Contingencies	%	Quantity	Item Cost	Remarks

New Construction

3%	6,523,804

\$ -

Renovation

\$ 195,714.12

Sub-Total

\$ 195,714.12

Grand Total Project Cost

\$ 7,110,946.36

Reference Data from Prior Sheets (for WVDE Use Only):

Energy Utilization Index:	120,486
Current Enrollment:	283
Program Capacity:	522
Utilization Calculation:	54%
Building(s) in Floodplain/Floodway:	0

Tyler County Schools

P.O. Box 25, Middlebourne, WV 26149
(304) 758-2145 Fax (304) 758-4566

A. Shane Highley, Superintendent
Katrina Byers, President
Larry Thomas, Vice-President
Andy Shreves, Member
Diana Stender, Member
Scott Strode, Member

November 21, 2024

Principals and LSIC at Arthur I. Boreman and Sistersville Elementary School

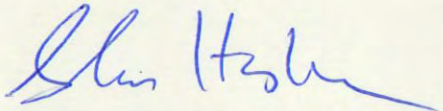
Dear Principals and LSIC,

I am writing to confirm that the impact statement regarding the Closure and Consolidation of Arthur I. Boreman Elementary and Sistersville Elementary School into a New Tyler Consolidated Elementary School was delivered to schools and LSIC on November 21, 2024.

Please ensure that the impact statement is posted in a visible location at your school until January 3, 2025, as required.

If you have any questions or concerns, please do not hesitate to reach out to my office.

Sincerely,



Shane Highley
Superintendent

Appendix 4 Proof of Public Hearing(s) Notice for all affected schools

Notice Order Confirmed

From Column Support <support@column.us>

Date Tue 11/19/2024 8:55 AM

To Stacey Roberts <sdroberts@k12.wv.us>

 1 attachment (204 KB)

notice_iwoMOuNdYGjAUPPhYc7g_proof.pdf;

You don't often get email from support@column.us. Learn why this is important

[EXTERNAL SENDER]: Do not click links, open attachments or reply to this email unless you recognize the sender and know the content is safe.

Hi Stacey,

Tyler Star News just confirmed that they have received your notice order.

Notice Name: Notice of Public Hearing School Consolidation

Notice ID: iwoMOuNdYGjAUPPhYc7g

Receipt Confirmed: Nov. 19, 2024

Publication Dates: 11/27/24, 12/04/24, 12/11/24

You'll receive further updates if the publisher makes any changes to your notice before publication.

[View Notice](#)

Supported by Column

If you'd like to unsubscribe from any emails from Column, you can do so in your user settings.

Notice of Public Hearing

Tyler County Schools

W.Va. 18-5-13a

W.Va. Board of Education Policy 6204

Date and Time

January 6th, 2025, at 6:00pm (Arthur I. Boreman Elementary School)

January 21st, 2025, at 6:00pm (Sistersville Elementary School)

*Sign in 15 minutes prior to the meeting to speak.

Alternative Date and Time:

If, in the event of inclement weather or other factors beyond the control of the board, the hearing cannot take place at the date and time set forth above, the hearing will be January 22nd at the Tyler Consolidated Middle/High School Auditorium at 6:00 PM for AIB, 7:00 PM for SES and the vote immediately following the hearings.

Place:

Tyler Consolidated Middle/High School Auditorium, 1993 Silver Knight Drive, Sistersville WV, 26175

Proposed Action of the Board of Education of the County of Tyler, West Virginia:

Consolidation of Arthur I Boreman Elementary School and Sistersville Elementary School into a new Tyler Consolidated Elementary School (Name still to be determined)

Hearing Procedures: A representative of Tyler County Schools will provide an oral summary of the reasons and supporting data in connection with the proposed action of the board. Fifteen minutes prior to the public hearing, persons may sign a register for the purpose of making statements, offering testimony, and questioning school officials. Persons wishing to speak about the effects of the proposed consolidation of Arthur I Boreman Elementary School and Sistersville Elementary School into a new Tyler Consolidated Elementary School, as well as those who wish to speak as members of the public, will be recognized in the order they have signed the register. Each person shall be limited to five minutes. Written statements or testimony may be submitted in lieu of oral statements prior to the end of the hearing. Any written statement will be given full consideration before the board takes final action. Reasons for Supporting Data available for Public Inspection: Written reasons and supporting data in connection with the proposed action of the Board are available for public inspection beginning November 27th, 2024, through January 3rd, 2025, between the hours of 8:00am and 4:00pm, in the office of the Superintendent of Tyler County Schools, 114 Dodd Street, Middlebourne WV 26149. The reasons and supporting data will also be available at Arthur I Boreman School and Sistersville Elementary School.

Identify Schools: Arthur I Boreman Elementary School and Sistersville Elementary School

First Run: Wednesday, Nov. 27, 2024

Second Run: Wednesday, Dec. 4, 2024

Third Run: Wednesday, Dec. 11, 2024

Meeting Date and Time:

January 6th, 6:00pm at Tyler Consolidated Middle/High School - Auditorium

January 21st, 6:00pm at Tyler Consolidated Middle/High School - Auditorium

January 22nd, 6:00 pm at Tyler Consolidated Middle/High School - Auditorium (Alternate Date)

Auditorium (Alternate Date)

TSN 11/27, 12/4, 12/11 #####



INTERIM AD DRAFT

This is the proof of your ad scheduled to run in **Tyler Star News** on the dates indicated below. If changes are needed, please contact us prior to deadline at **(304) 652-4141**.

Notice ID: iwoMOuNdYGjAUPPhYc7g | Proof Updated: Nov. 19, 2024 at 08:59am EST
Notice Name: Notice of Public Hearing School Consolidation

See Proof on Next Page

This is not an invoice. Below is an estimated price, and it is subject to change. You will receive an invoice with the final price upon invoice creation by the publisher.

FILER

Stacey Roberts
sdroberts@k12.wv.us
(304) 758-2145

FILING FOR

Tyler Star News

Columns Wide: 2 **Ad Class:** Legals
Total Column Inches: 13.78
Number of Lines: 71

11/27/2024: Other	49.90
12/04/2024: Other	49.90
12/11/2024: Other	49.90
Affidavit Fee	10.00

Subtotal	\$159.70
Tax	\$0.00
Processing Fee	\$15.97
Total	\$175.67

Notice of Public Hearing
Tyler County Schools
W.Va. 18-5-13a
W.Va. Board of Education Policy 6204

Date and Time

January 6th, 2025, at 6:00pm (Arthur I. Boreman Elementary School)
January 21st, 2025, at 6:00pm (Sistersville Elementary School)
* Sign in 15 minutes prior to the meeting to speak.

Alternative Date and Time:

If, in the event of inclement weather or other factors beyond the control of the board, the hearing cannot take place at the date and time set forth above, the hearing will be January 22nd at the Tyler Consolidated Middle/High School Auditorium at 6:00 PM for AIB, 7:00 PM for SES and the vote immediately following the hearings.

Place:

Tyler Consolidated Middle/High School Auditorium, 1993 Silver Knight Drive, Sistersville WV, 26175

Proposed Action of the Board of Education of the County of Tyler, West Virginia:

Consolidation of Arthur I Boreman Elementary School and Sistersville Elementary School into a new Tyler Consolidated Elementary School (Name still to be determined)

Hearing Procedures: A representative of Tyler County Schools will provide an oral summary of the reasons and supporting data in connection with the proposed action of the board. Fifteen minutes prior to the public hearing, persons may sign a register for the purpose of making statements, offering testimony, and questioning school officials. Persons wishing to speak about the effects of the proposed consolidation of Arthur I Boreman Elementary School and Sistersville Elementary School into a new Tyler Consolidated Elementary School, as well as those who wish to speak as members of the public, will be recognized in the order they have signed the register. Each person shall be limited to five minutes. Written statements or testimony may be submitted in lieu of oral statements prior to the end of the hearing. Any written statement will be given full consideration before the board takes final action.

Reasons for Supporting Data available for Public Inspection: Written reasons and supporting data in connection with the proposed action of the Board are available for public inspection beginning November 27th, 2024, through January 3rd, 2025, between the hours of 8:00am and 4:00pm. In the office of the Superintendent of Tyler County Schools, 114 Dodd Street, Middlebourne WV 26149. The reasons and supporting data will also be available at Arthur I Boreman School and Sistersville Elementary School.

Identify Schools: Arthur I Boreman Elementary School and Sistersville Elementary School

First Run: Wednesday, Nov. 27, 2024
Second Run: Wednesday, Dec. 4, 2024
Third Run: Wednesday, Dec. 11, 2024

Meeting Date and Time:

January 6th, 6:00pm at Tyler Consolidated Middle/High School - Auditorium
January 21st, 6:00pm at Tyler Consolidated Middle/High School - Auditorium
January 22nd, 6:00 pm at Tyler Consolidated Middle/High School - Auditorium (Alternate Date)

TC BOE
TSN 11/27 12/04 12/11

TSN 11/27, 12/4, 12/11 #####

Legal Notices

Notice of Public Hearing
Tyler County Schools
W.Va. 18-5-13a
W.Va. Board of Education Policy 6204

Date and Time
January 6th, 2025, at 6:00pm (Arthur I. Boreman
Elementary School)
January 21st, 2025, at 6:00pm (Sistersville Elementary
School)
*Sign in 15 minutes prior to the meeting to speak.

Alternative Date and Time:
If, in the event of inclement weather or other factors
beyond the control of the board, the hearing cannot take
place at the date and time set forth above, the hearing
will be January 22nd at the Tyler Consolidated
Middle/High School Auditorium at 6:00 PM for AIB, 7:00
PM for SES and the vote immediately following the
hearings.

Place:
Tyler Consolidated Middle/High School Auditorium,
1993 Silver Knight Drive, Sistersville WV, 26175

Proposed Action of the Board of Education of the
County of Tyler, West Virginia:

Consolidation of Arthur I Boreman Elementary School
and Sistersville Elementary School into a new Tyler
Consolidated Elementary School (Name still to be
determined)

Hearing Procedures: A representative of Tyler County
Schools will provide an oral summary of the reasons
and supporting data in connection with the proposed
action of the board. Fifteen minutes prior to the public
hearing, persons may sign a register for the purpose of
making statements, offering testimony, and questioning
school officials. Persons wishing to speak about the
effects of the proposed consolidation of Arthur I
Boreman Elementary School and Sistersville
Elementary School into a new Tyler Consolidated
Elementary School, as well as those who wish to speak
as members of the public, will be recognized in the
order they have signed the register. Each person shall
be limited to five minutes. Written statements or
testimony may be submitted in lieu of oral statements
prior to the end of the hearing. Any written statement will
be given full consideration before the board takes final
action.

Reasons for Supporting Data available for Public
Inspection: Written reasons and supporting data in
connection with the proposed action of the Board are
available for public inspection beginning November
27th, 2024, through January 3rd, 2025, between the
hours of 8:00am and 4:00pm. In the office of the
Superintendent of Tyler County Schools, 114 Dodd
Street, Middlebourne WV 26149. The reasons and
supporting data will also be available at Arthur I
Boreman School and Sistersville Elementary School.

Identify Schools: Arthur I Boreman Elementary School
and Sistersville Elementary School

First Run: Wednesday, Nov. 27, 2024
Second Run: Wednesday, Dec. 4, 2024
Third Run: Wednesday, Dec. 11, 2024

Meeting Date and Time:
January 6th, 6:00pm at Tyler Consolidated Middle/High
School - Auditorium
January 21st, 6:00pm at Tyler Consolidated Middle/High
School - Auditorium
January 22nd, 6:00 pm at Tyler Consolidated
Middle/High School - Auditorium (Alternate Date)

TC BOE
TSN 11/27 12/04 12/11 5382

Tyler Star News

To place an ad call: **(304) 652-4141** • Fax: **(304) 652-1454**

Hours:

By telephone or walk-in: 8:30-5:00 Monday-Friday • Fax: 24 hours a day/7 days a week

Classified Deadlines

Line Ads: Noon Fri. prior to Wed. publication

Display Ads: Noon Fri. prior to Wed. publication



Legal Notices

Notice of Public Hearing
Tyler County Schools
W.Va. 18-5-13a
W.Va. Board of Education Policy 6204

Date and Time
January 6th, 2025, at 6:00pm (Arthur I. Boreman Elementary School)
January 21st, 2025, at 6:00pm (Sistersville Elementary School)
*Sign in 15 minutes prior to the meeting to speak.

Alternative Date and Time:
If, in the event of inclement weather or other factors beyond the control of the board, the hearing cannot take place at the date and time set forth above, the hearing will be January 22nd at the Tyler Consolidated Middle/High School Auditorium at 6:00 PM for AIB, 7:00 PM for SES and the vote immediately following the hearings.

Place:
Tyler Consolidated Middle/High School Auditorium,
1993 Silver Knight Drive, Sistersville WV, 26175

Proposed Action of the Board of Education of the County of Tyler, West Virginia:

Consolidation of Arthur I Boreman Elementary School and Sistersville Elementary School into a new Tyler Consolidated Elementary School (Name still to be determined)

Hearing Procedures: A representative of Tyler County Schools will provide an oral summary of the reasons and supporting data in connection with the proposed action of the board. Fifteen minutes prior to the public hearing, persons may sign a register for the purpose of making statements, offering testimony, and questioning school officials. Persons wishing to speak about the effects of the proposed consolidation of Arthur I Boreman Elementary School and Sistersville Elementary School into a new Tyler Consolidated Elementary School, as well as those who wish to speak as members of the public, will be recognized in the order they have signed the register. Each person shall be limited to five minutes. Written statements or testimony may be submitted in lieu of oral statements prior to the end of the hearing. Any written statement will be given full consideration before the board takes final action.

Reasons for Supporting Data available for Public Inspection: Written reasons and supporting data in connection with the proposed action of the Board are available for public inspection beginning November 27th, 2024, through January 3rd, 2025, between the hours of 8:00am and 4:00pm. In the office of the Superintendent of Tyler County Schools, 114 Dodd Street, Middlebourne WV 26149. The reasons and supporting data will also be available at Arthur I Boreman School and Sistersville Elementary School.

Identify Schools: Arthur I Boreman Elementary School and Sistersville Elementary School

First Run: Wednesday, Nov. 27, 2024
Second Run: Wednesday, Dec. 4, 2024
Third Run: Wednesday, Dec. 11, 2024

Meeting Date and Time:
January 6th, 6:00pm at Tyler Consolidated Middle/High School - Auditorium
January 21st, 6:00pm at Tyler Consolidated Middle/High School - Auditorium
January 22nd, 6:00 pm at Tyler Consolidated Middle/High School - Auditorium (Alternate Date)

TC BOE
TSN 11/27 12/04 12/11 5382

Legal Notices

Notice of Public Hearing
Tyler County Schools
W.Va. 18-5-13a
W.Va. Board of Education Policy 6204

Date and Time
January 6th, 2025, at 6:00pm (Arthur I. Boreman Elementary School)
January 21st, 2025, at 6:00pm (Sistersville Elementary School)
*Sign in 15 minutes prior to the meeting to speak.

Alternative Date and Time:
If, in the event of inclement weather or other factors beyond the control of the board, the hearing cannot take place at the date and time set forth above, the hearing will be January 22nd at the Tyler Consolidated Middle/High School Auditorium at 6:00 PM for AIB, 7:00 PM for SES and the vote immediately following the hearings.

Place:
Tyler Consolidated Middle/High School Auditorium,
1993 Silver Knight Drive, Sistersville WV, 26175

Proposed Action of the Board of Education of the County of Tyler, West Virginia:

Consolidation of Arthur I Boreman Elementary School and Sistersville Elementary School into a new Tyler Consolidated Elementary School (Name still to be determined)

Hearing Procedures: A representative of Tyler County Schools will provide an oral summary of the reasons and supporting data in connection with the proposed action of the board. Fifteen minutes prior to the public hearing, persons may sign a register for the purpose of making statements, offering testimony, and questioning school officials. Persons wishing to speak about the effects of the proposed consolidation of Arthur I Boreman Elementary School and Sistersville Elementary School into a new Tyler Consolidated Elementary School, as well as those who wish to speak as members of the public, will be recognized in the order they have signed the register. Each person shall be limited to five minutes. Written statements or testimony may be submitted in lieu of oral statements prior to the end of the hearing. Any written statement will be given full consideration before the board takes final action.

Reasons for Supporting Data available for Public Inspection: Written reasons and supporting data in connection with the proposed action of the Board are available for public inspection beginning November 27th, 2024, through January 3rd, 2025, between the hours of 8:00am and 4:00pm. In the office of the Superintendent of Tyler County Schools, 114 Dodd Street, Middlebourne WV 26149. The reasons and supporting data will also be available at Arthur I Boreman School and Sistersville Elementary School.

Identify Schools: Arthur I Boreman Elementary School and Sistersville Elementary School

First Run: Wednesday, Nov. 27, 2024
Second Run: Wednesday, Dec. 4, 2024
Third Run: Wednesday, Dec. 11, 2024

Meeting Date and Time:
January 6th, 6:00pm at Tyler Consolidated Middle/High School - Auditorium
January 21st, 6:00pm at Tyler Consolidated Middle/High School - Auditorium
January 22nd, 6:00 pm at Tyler Consolidated Middle/High School - Auditorium (Alternate Date)

TC BOE
TSN 11/27 12/04 12/11 5382

Tyler Star News

Receipt

Column Software PBC
PO Box 208098
Dallas, TX 75320-8098
help.column.us

Paid by
Tyler County BOE

Receipt number
Invoice number 1C38947D-0003
Notice ID iwoMOuNdYGjAUPPhYc7g
Order Number LC0516
Publisher Tyler Star News
Date paid Dec 6, 2024
Payment method Marked as paid

Description	Qty	Unit price	Amount
11/27/2024: Other Notice	1	49.90	49.90
12/04/2024: Other Notice	1	49.90	49.90
12/11/2024: Other Notice	1	49.90	49.90
Affidavit Fee	1	10.00	10.00

=== Notes ===

Notice Name: Notice of Public Hearing School Consolidation
Order Number: LC0516

Net Subtotal \$159.70

Tax 0.00

Processing Fee 15.97

Amount paid \$175.67

Tyler Star News

Invoice

Column Software PBC
PO Box 208098
Dallas, TX 75320-8098
help.column.us

Bill to
Tyler County BOE

Invoice number 1C38947D-0003
Notice ID iwoMOuNdYGjAUPPhYc7g
Order Number LC0516
Publisher Tyler Star News
Date of issue Nov 19, 2024
Date due Dec 19, 2024
Amount due **\$175.67**

Description	Qty	Unit price	Amount
11/27/2024: Other Notice	1	49.90	49.90
12/04/2024: Other Notice	1	49.90	49.90
12/11/2024: Other Notice	1	49.90	49.90
Affidavit Fee	1	10.00	10.00

=== Notes ===

Notice Name: Notice of Public Hearing School Consolidation
Order Number: LC0516

=== How to pay this invoice ===

Column Software PBC accepts online payment via credit or debit card, or ACH bank transfers. Please click here to pay online:
<https://www.column.us/invoices/HkPOzIYXfOeB8FRqIADI/pay>

Please note that, once paid, the merchant name on your billing statements will be Column Software PBC.

Select organizations may also pay via check. Checks will result in processing delays and should not be used if your notice requires upfront payment. Please pay the exact amount due, write your invoice number 1C38947D-0003 on the memo, include a printed copy of your Invoice PDF, make the check payable to Column Software PBC, and mail to the address above.

Net Subtotal	\$159.70
Tax	0.00
Processing Fee	15.97
Amount due	\$175.67

Pay here: <https://www.column.us/invoices/HkPOzIYXfOeB8FRqIADI/pay>

Questions? Visit help.column.us

1C38947D-0003 - Page 1 of 1



Tyler County Schools

Dec 2, 2024 • 🌐



We are excited to announce the beginning stages of planning and designing a new Tyler County Elementary School! This project represents an incredible opportunity to create a modern, innovative, and welcoming space that meets the educational needs of our students and serves as a cornerstone of our community for generations to come.

Your voice is essential in shaping this new facility. We invite parents, students, educators, and community members to share their ideas, priorities, and vision for the design and functionality of the school. Whether it's classrooms, playgrounds, technology, sustainability features, or community spaces, we want to hear from you.

tylercountypublicschools.com/survey



TYLERCOUNTYPUBLICSCHOOLS.COM/SURVEY





Tyler County Schools

Dec 19, 2024 • 🌐

...

Sneak Peek!!!

Here are a couple conceptual drawings of the new proposed Tyler County Consolidated Elementary School. More photos to come next week. We are excited to start this journey that will allow our students the best educational experience. Please remember these are just conceptual drawings. The hearings below and continued input by all stakeholders are vital to making sure Tyler County students are set for decades to come!!

Notice of Public Hearing

Topic: Closure and consolidation of Arthur I. Boreman Elementary and Sistersville Elementary into a newly constructed Tyler Consolidated Elementary. School name TBD and estimated completion date 2027.

Dates & Locations:

- Jan. 6, 2025, at 6:00 PM for Arthur I. Boreman Elementary School
- Jan. 21, 2025, at 6:00 PM for Sistersville Elementary School

Location:

Tyler Consolidated MS/HS Auditorium

Supporting Data: Available for review at the Superintendent's office (114 Dodd St., Middlebourne) or at both schools until Jan. 3, 2025.

Questions?

Contact: Tyler County Schools - 304-758-2145

PRELIMINARY CONCEPTUAL VIEW FROM EXISTING SCHOOL ACCESS ROAD ENTRANCE



PRELIMINARY CONCEPTUAL AERIAL VIEW FROM RT 18 SIDE



   319

158 comments 252 shares

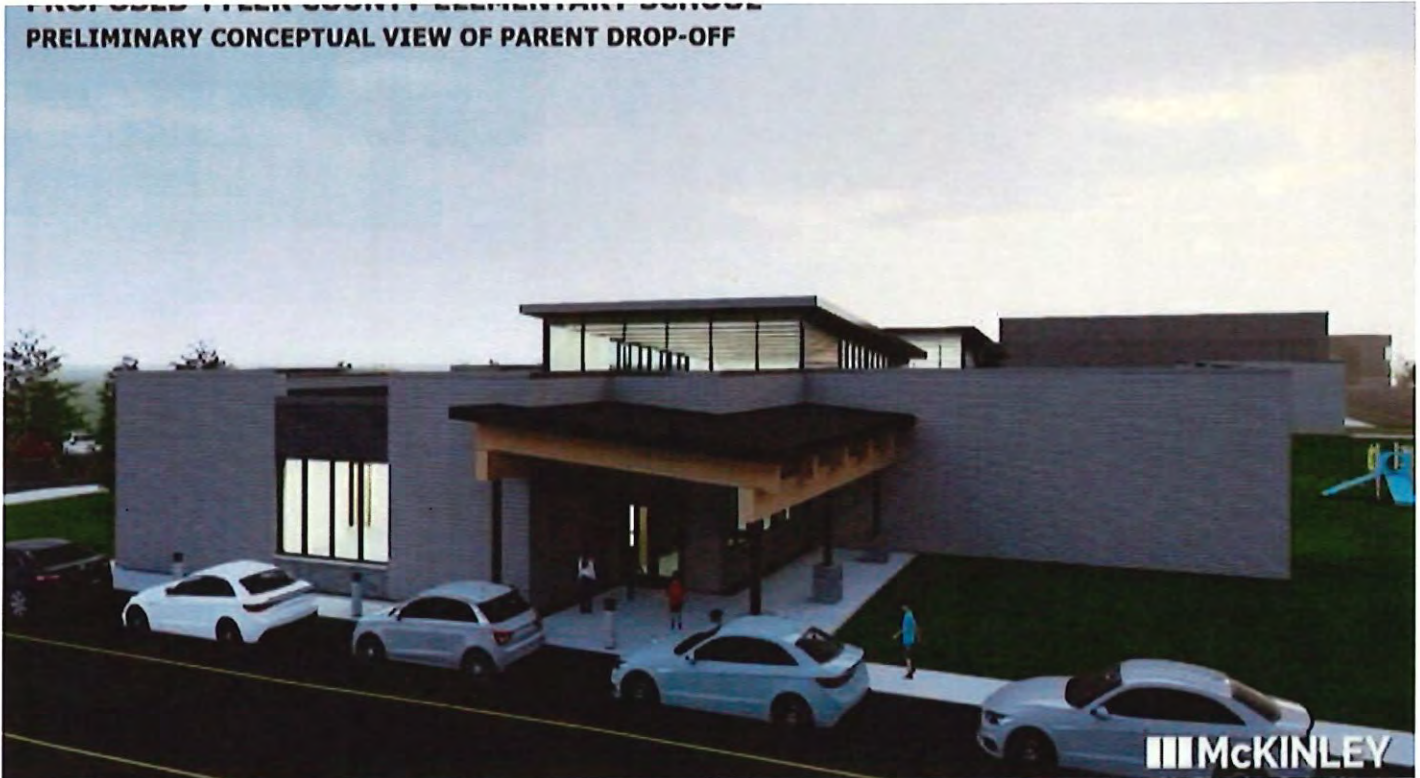


Tyler County Schools

...

Dec 26, 2024 • 🌐

Here are a few more early conceptual drawings !!!



8:06



Tyler County Schools



Posts

About

Photos

Videos

Mentions



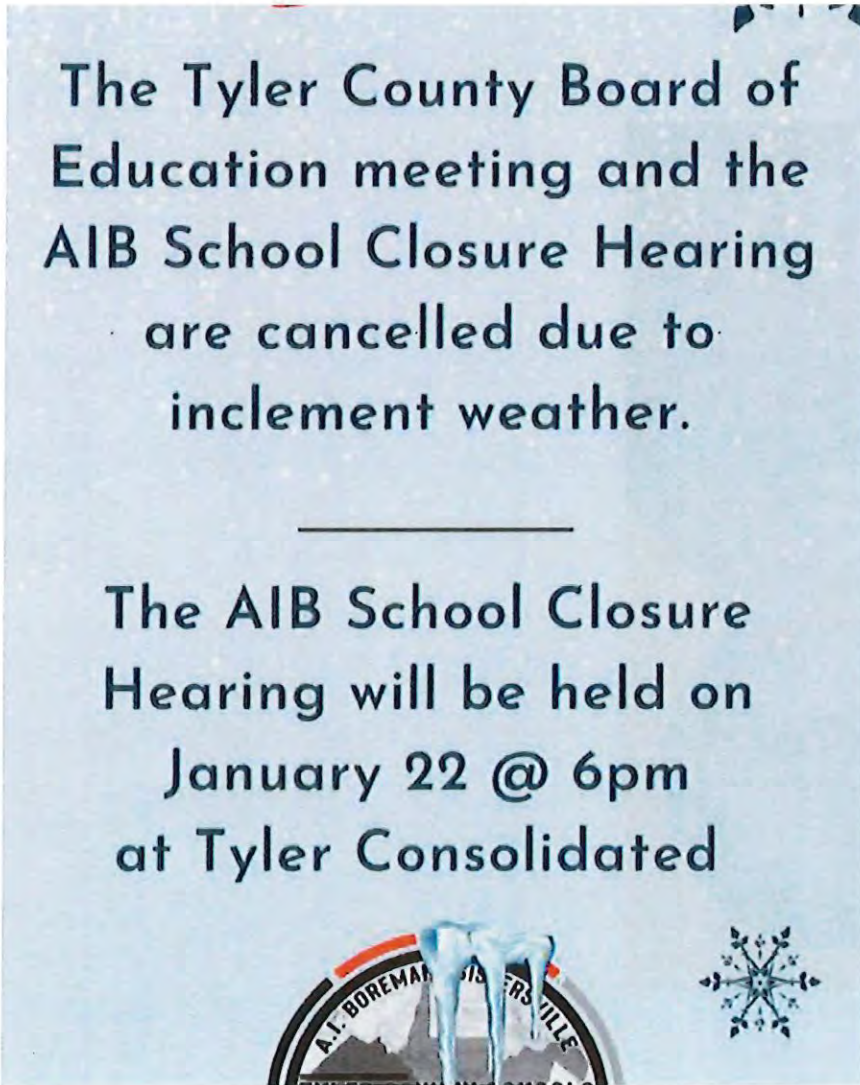
Tyler County Schools

Jan 6 · 🌐



MEETING CANCELLED:

The Tyler County Board of Education meeting and AIB School Closure Hearing scheduled for this eve... See more



1

4 shares



Home



Video



Friends



Marketplace



Notifications



Menu

Sent from my iPhone

8:06



Tyler County Schools



Posts

About

Photos

Videos

Mentions



Tyler County Schools

8h · 🌐



----- Elementary School Closure Hearings -----
 Sistersville Elementary School - January 21st @ 6PM
 A.I.Boreman Elementary School - January 22nd @ 6PM
 All hearings will be held in the Auditorium at Tyler
 Consolidated

3 comments 8 shares



Like



Comment



Share



Home



Video



Friends



Marketplace



Notifications



Menu

12:32



98900

Text Message • SMS
Today 12:31 PM

Tyler County Schools: Reminder:
January 21st and 22nd at 6:00pm at
the Tyler Consolidated Auditorium,
Tyler County Schools will be holding
hearings for the new Tyler
Consolidated Elementary School.
These hearings are open to the public.

The sender is not in your contact list.

[Report Junk](#)

11:31



Tyler County Schools



Posts

About

Photos

Videos

Mentions



Tyler County Schools



1d · 🌐

On January 22, 2025 all Tyler County Schools are closed for all students due to extreme cold and secondary road conditions. Staff to report on a 2 hour delay. Snow packet day # 4 !!!

👍 9

1 comment 43 shares

👍 Like

💬 Comment

➦ Share



Tyler County Schools



1d · 🌐

Attention:

For those attending the Closure Hearings and Tyler County Board of Education Meeting tonight at Tyler Consolidated please enter through door 18 (side of the school) or 20(back of the school) and proceed to the auditorium entrance by the trophy cases.

👍 3

10 comments 6 shares

👍 Like

💬 Comment

➦ Share



Tyler County Schools



2d · 🌐

Snow Packet Day # 3

👍 3

5 shares

👍 Like

💬 Comment

➦ Share



Tyler County Schools



2d · 🌐

On January 21st , All Tyler County Schools are closed for

11:30



Tyler County Schools



Posts

About

Photos

Videos

Mentions



Tyler County Schools

22h · 🌐



A public hearing regarding the closure of Boreman Elementary School will be held tonight in the Tyler Consolidated auditorium at 6pm. Doors open at 5:00. The hearing will be live streamed on the Tyler County Schools YouTube channel.

The Central Office has fielded many calls regarding tonight's event, and has made plans to accommodate the large crowd that is expected.

Limited parking is available out back. Please reserve those spots for folks who need to avoid stairs; if you do park out back, please park in marked spots to allow traffic to safely move in the area. Doors #18 or #20 will be open in the back of the school.

If possible, please utilize the lower lots or front circle parking spots. Those parking in the front circle are asked to not park in the grass. Enter on the Middle School side and through the auditorium lobby.

If you need handicap access, please call 304-771-8646, 304-771-8314, or 304-771-0141 once you arrive to Tyler Consolidated.

The gymnasiums and commons areas will be utilized for overflow seating if necessary. A live stream from the auditorium will be shown in those areas.

Delegations wishing to speak at the hearing must be signed in by 5:45. Delegations will present in order of sign-in and will be given 10 minutes to speak.

Logann Kehrer and 10 others

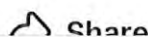
40 shares



Like



Comment



Share

11:30



Tyler County Schools



Posts

About

Photos

Videos

Mentions



Tyler County Schools

18h · 🌐



Live Feed: AIB School Closure Hearing -

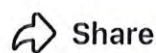


youtube.com

TCBOE School Closure Hearing - A.I.Boreman Elementary

👍❤️ 3

8 shares



Tyler County Schools

22h · 🌐



A public hearing regarding the closure of Boreman Elementary School will be held tonight in the Tyler Consolidated auditorium at 6pm. Doors open at 5:00. The hearing will be live streamed on the Tyler County Schools YouTube channel.

The Central Office has fielded many calls regarding tonight's event, and has made plans to accommodate the large crowd that is expected.

Appendix 5 Public Hearing(s) Documentation for all affected schools

Tyler County Schools

P.O. Box 25, Middlebourne, WV 26149
(304) 758-2145 Fax (304) 758-4566

A. Shane Highley, Superintendent
Katrina Byers, President
Larry Thomas, Vice-President
Andy Shreves, Member
Diana Stender, Member
Scott Strode, Member

January 23, 2025

The Tyler County Board of Education did not receive any written statements from the community regarding the proposed closure and consolidation of Arthur I. Boreman Elementary and Sistersville Elementary into a newly constructed Tyler Consolidated Elementary School to be read during the public hearings on January 21, 2025 for Sistersville Elementary School and January 22, 2025 for Arthur I. Boreman Elementary School.



A. Highley
Superintendent
Tyler County Schools

TYLER COUNTY BOARD OF EDUCATION
SPECIAL MEETING – SCHOOL CLOSURE S.E.S.

January 21, 2025

HEARING ON CLOSURE OF SISTERSVILLE ELEMENTARY SCHOOL AND ITS CONSOLIDATION INTO THE NEW TYLER CONSOLIDATED ELEMENTARY SCHOOL 6:00 PM, Tuesday, January 21, 2025.

DELEGATIONS SUMMARY:

MAGGIE FISHER

Maggie Fisher, a parent and Technology System Specialist for Tyler County Schools, advocates for consolidating schools into a single campus. She shares personal experiences of logistical challenges with multiple schools and highlights the benefits of consolidation, including:

- Creating a central community hub
- Enhancing student connections and programs
- Improving resource management and efficiency
- Unifying counseling services
- Increasing safety and security measures
- Supporting programs like the 5th-grade band and reducing transportation time

Fisher emphasizes the potential for growth, collaboration, and a stronger sense of community with a consolidated school system.

Special School Closure Meeting



TYLER COUNTY BOARD OF EDUCATION MEETING ATTENDANCE

Tuesday, January 21, 2025

Date

<i>Please Print Your Name Clearly</i>	<i>Please Print Your Name Clearly</i>
1. Amanda Kimble	17. Bessie Billings
2. Paden Morris	18. Daron Weckerly
3. Andrea Matley	19. Ruby Douthett
4. Suzette Miller	20. Julie Cogsd
5. Maggie Fisher	21. Tim Cozad
6. Robin Newell	22. Kisha DeVault
7. Mary Jane Moss	23. Marcia Kitter
8. Tracy Hakes	24. Winslow Charles
9. Karissa Buck	25. Hannah Roberts
10. Jullia	26. Lindsay Bohrer
11. Christina Duke	27. Patrick Rymer
12. Cindi Greathouse	28. Melinda Walton
13. Tiffany Hayes	29. Katie Ash
14. Adrianna Lindsey	30. Jill Ash
15. Jonathan Lindsey	31. Zoe Fisher
16. Aubree Williams	32. Patsy Riebel

Special School Closure Meeting



TYLER COUNTY BOARD OF EDUCATION MEETING ATTENDANCE

Tuesday, January 21, 2025

Date

<i>Please Print Your Name Clearly</i>		<i>Please Print Your Name Clearly</i>	
33.	Annika Kelly Myers	17.	
34 2.	Stacy L Kidder	18.	
35 3.	Matt Jennings	19.	
36 4.	Wendy Carpenter	20.	
37 5.	Heather Housel	21.	
38 6.	Kristen Wince	22.	
39 7.	Samuelson	23.	
40 8.	Lucia Feldmeier	24.	
9.		25.	
10.		26.	
11.		27.	
12.		28.	
13.		29.	
14.		30.	
15.		31.	
16.		32.	

TYLER COUNTY BOARD OF EDUCATION

Special School Closure Meeting

TO SPEAK AS A DELEGATION

Date: Wednesday, January 22, 2025

Per Tyler County Policy BQ and WV Code 6-9A-3 and 6-9A-4: Persons who desire to address the Board shall be required to register to speak more than 15 minutes prior to the time that the meeting is scheduled to begin. The Board allots 10 minutes for a delegation to present their topic.

INDIVIDUALS WILL BE ALLOTTED 10 MINUTES PER TOPIC.
IF 3 OR MORE INDIVIDUALS WISH TO ADDRESS THE SAME TOPIC, A SPOKESPERSON IS TO BE SELECTED.

Names of specific employees or students may not be discussed outside of Executive Session as according to WV Code 6-9A-4.

NAME	REPRESENTING	SUBJECT	Does this pertain to specific personnel?
Carla Wells	AIB	School Consolidation	Yes / <input checked="" type="checkbox"/> No
Melissa Kendall	AIB	School Consolidation	Yes / <input checked="" type="checkbox"/> No
Pam Stollings	TC SSC	TC SSC and consolidation	Yes / <input checked="" type="checkbox"/> No
Brendan Negie	Self	Consolidation	Yes / <input checked="" type="checkbox"/> No
JC Kimble	Self	Consolidation	Yes / <input checked="" type="checkbox"/> No
Maggie Fisher	Self	Consolidation	Yes / <input checked="" type="checkbox"/> No
Roger Weese	Tax Payers	Consolidation	Yes / <input checked="" type="checkbox"/> No
Timothy Stanley	Self	Consolidation	Yes / <input checked="" type="checkbox"/> No

TYLER COUNTY BOARD OF EDUCATION
SPECIAL MEETING – SCHOOL CLOSURE A.I.B.

January 22, 2025

HEARING ON CLOSURE OF ARTHUR I. BOREMAN ELEMENTARY SCHOOL AND ITS CONSOLIDATION INTO THE NEW TYLER CONSOLIDATED ELEMENTARY SCHOOL 6:00 PM, Wednesday, January 22, 2025.

DELEGATIONS SUMMARY:

CARLA WELLS

Carla Wells, a Teacher at Arthur I. Boreman Elementary School, speaks on behalf of the faculty and staff. She highlights the benefits of consolidating elementary schools into one unified campus, including:

- Seamless learning experience for students
- Stronger relationships between teachers and students
- Smoother transitions between grades
- Access to shared resources and facilities
- Improved facilities and technology
- Enhanced collaboration among teachers and staff
- Stronger community ties and more opportunities for family engagement
- Potential cost savings and revenue generation

Wells emphasizes that consolidation is not just about combining buildings, but about providing a better educational experience, creating a facility built for the future, and strengthening communities.

TYLER COUNTY BOARD OF EDUCATION
SPECIAL MEETING – SCHOOL CLOSURE A.I.B.

January 22, 2025

HEARING ON CLOSURE OF ARTHUR I. BOREMAN ELEMENTARY SCHOOL AND ITS CONSOLIDATION INTO THE NEW TYLER CONSOLIDATED ELEMENTARY SCHOOL 6:00 PM, Wednesday, January 22, 2025.

DELEGATIONS SUMMARY:

MELISSA KENDALL

Melissa Kendall, a second-grade teacher at Arthur I. Boreman Elementary School, discusses the benefits of consolidating schools. She highlights:

- The importance of childcare for working parents and its positive impact on productivity and morale
- The benefits of consolidating schools for students, including earlier opportunities for collaboration and relationship-building
- The potential for enhanced education quality and resources through consolidation
- The practical challenge of accommodating growing student and staff numbers from neighboring counties
- The importance of building a brighter future for the community and providing every child with the tools they need to succeed.

TYLER COUNTY BOARD OF EDUCATION
SPECIAL MEETING – SCHOOL CLOSURE A.I.B.

January 22, 2025

HEARING ON CLOSURE OF ARTHUR I. BOREMAN ELEMENTARY SCHOOL AND ITS CONSOLIDATION INTO THE NEW TYLER CONSOLIDATED ELEMENTARY SCHOOL 6:00 PM, Wednesday, January 22, 2025.

DELEGATIONS SUMMARY:

PAM STOLLINGS

Pam Stollings from the Tyler County School System discusses the importance of a Student Success Center. A Student Success Center provides a safe space for students to address basic needs, emotional challenges, and academic struggles.

- The center offers essential resources, including:
 - Food
 - Clothing
 - Counseling

- The existing center has shown success, and the speaker encourages the board to implement a similar center in the new elementary school.
- Younger students also experience anxiety, depression, and trauma, emphasizing the need for support in elementary schools.

TYLER COUNTY BOARD OF EDUCATION
SPECIAL MEETING – SCHOOL CLOSURE A.I.B.

January 22, 2025

HEARING ON CLOSURE OF ARTHUR I. BOREMAN ELEMENTARY SCHOOL AND ITS CONSOLIDATION INTO THE NEW TYLER CONSOLIDATED ELEMENTARY SCHOOL 6:00 PM, Wednesday, January 22, 2025.

DELEGATIONS SUMMARY:

BRENDAN NEGIE

Brendan Negie, a parent, citizen, and Transportation Department employee, speaks in favor of consolidating Boreman and Sistersville elementary schools. He highlights the benefits, including:

- Simplifying logistics for parents with multiple children
- Reducing maintenance costs for outdated buildings
- Streamlining transportation and bus routes
- Allowing older and younger siblings to ride the same bus
- Faster snow removal on inclement weather days

Negie also references a previous school board meeting, where the executive director of the West Virginia School Board Association discussed the importance of school board members acting in the best interest of the school district. Negie expresses concern that some board members may not have the employees', schools', or county's best interest in mind.

TYLER COUNTY BOARD OF EDUCATION
SPECIAL MEETING – SCHOOL CLOSURE A.I.B.

January 22, 2025

HEARING ON CLOSURE OF ARTHUR I. BOREMAN ELEMENTARY SCHOOL AND ITS CONSOLIDATION INTO THE NEW TYLER CONSOLIDATED ELEMENTARY SCHOOL 6:00 PM, Wednesday, January 22, 2025.

DELEGATIONS SUMMARY:

JC KIMBLE

JC Kimble expresses support for the consolidation of elementary schools in Tyler County, highlighting the benefits of unity and efficiency. He:

- Acknowledges the hard work and dedication of Superintendent Highley and his team
- Emphasizes the importance of putting the needs of students first
- Urges board members to vote in favor of consolidation
- Recognizes the challenges and sacrifices made by staff and administrators
- Encourages the community to come together in support of consolidation

Kimble also shares personal anecdotes, including his wife's experiences as facilities director, and emphasizes the need for board members to make decisions that benefit the students and community of Tyler County.

TYLER COUNTY BOARD OF EDUCATION
SPECIAL MEETING – SCHOOL CLOSURE A.I.B.

January 22, 2025

HEARING ON CLOSURE OF ARTHUR I. BOREMAN ELEMENTARY SCHOOL AND ITS CONSOLIDATION INTO THE NEW TYLER CONSOLIDATED ELEMENTARY SCHOOL 6:00 PM, Wednesday, January 22, 2025.

DELEGATIONS SUMMARY:

MAGGIE FISHER

Maggie Fisher, a parent, alumna, and technology systems specialist for Tyler County Schools, expresses strong support for consolidating elementary schools. She highlights the benefits of:

- Creating a centralized community hub
- Improving safety and security through unified resources and technology
- Enhancing educational programs and services, such as band and counseling
- Reducing travel time and logistical challenges for students and staff
- Fostering a sense of community and connection among students, parents, and staff

Fisher shares personal anecdotes and professional insights, emphasizing the potential for consolidation to positively impact the lives of students, families, and staff in Tyler County.

TYLER COUNTY BOARD OF EDUCATION
SPECIAL MEETING – SCHOOL CLOSURE A.I.B.

January 22, 2025

HEARING ON CLOSURE OF ARTHUR I. BOREMAN ELEMENTARY SCHOOL AND ITS CONSOLIDATION INTO THE NEW TYLER CONSOLIDATED ELEMENTARY SCHOOL 6:00 PM, Wednesday, January 22, 2025.

DELEGATIONS SUMMARY:

ROGER WEESE

Roger Weese, a retired attorney and lifelong resident of Tyler County, expresses his support for the consolidation of schools despite initial reservations. He acknowledges the significant cost of \$65 million, emphasizing that it will be borne by the taxpayers of Tyler County.

- Recognizes the sacrifices made by taxpayers to fund the new school
- Urges wise spending and responsible management of funds
- He will be monitoring the money spent
- Will buckle down and be supportive of our Board of Education and their decisions
- Expresses gratitude for the efforts of the Board of Education
- Thank our Board members for their wisdom in pushing this stuff through
- Emphasizes the importance of providing the best opportunities for the children and community of Tyler County

TYLER COUNTY BOARD OF EDUCATION
SPECIAL MEETING – SCHOOL CLOSURE A.I.B.

January 22, 2025

HEARING ON CLOSURE OF ARTHUR I. BOREMAN ELEMENTARY SCHOOL AND ITS CONSOLIDATION INTO THE NEW TYLER CONSOLIDATED ELEMENTARY SCHOOL 6:00 PM, Wednesday, January 22, 2025.

DELEGATIONS SUMMARY:

TIMOTHY STANLEY

Timothy Stanley, a citizen, spoke about school consolidation, emphasizing its importance and the need for support from the community and board members. Key points from his speech include:

- **Community Support:** He asked taxpayers to stand up, showing a majority support consolidation.
- **Infrastructure Update:** Stanley highlighted the need to update the 50-year-old building's infrastructure.
- **Accountability:** He encouraged board members to support the people who elected them, staff members, and students.
- **Prioritizing the County's Needs:** Stanley urged board members to vote for what's best for the county, rather than personal agendas.

Appendix 6 Board minutes indicating the action of the board to approve the closure(s)

**MINUTES OF THE MEETING
OF THE
TYLER COUNTY BOARD OF EDUCATION
SPECIAL MEETING – SCHOOL CLOSURE S.E.S.
January 21, 2025**

CALL TO ORDER OF SPECIAL MEETING:

The special meeting was called to order by President, Katrina Byers at 6:00 p.m. at the Tyler Consolidated Middle/High School Auditorium.

BOARD MEMBERS PRESENT:

Katrina Byers, President	Present
Larry Thomas, Vice President	Present
Andy Shreves, Member	Present
Scott Strode, Member	Present
Diana Stender, Member	Present
Shane Highley, Superintendent	Present

OTHERS PRESENT:

Stacey Roberts, Executive Secretary; Andy Weekley, Director of Technology; Maggie Fisher, TSS; Suzette Miller, Director of Curriculum and Instruction; Melinda Walton, Director of Attendance and Sp. Education; Tricia Feldmeier, Director of Human Resources; Amanda Kimble, Director of Child Nutrition; Richard Davis, Director of Transportation; Krista DeVaughn, Principal of SES; Marcus Winters, Principal of TCMS; Paden Morris, Principal of TCHS; Kelly Myers, Tyler County WVEA Representative; Roger Weese, Mary Jane Moss, Tracy Hakes, Karissa Buck, Daniel Cooper, Christina Duke, Cindi Greathouse, Tiffany Hayes, Adrianna Liindsey, Jonathan Lindsey, Aubree Williams, Bessie Billings, Daron Weekley, Julie Cozad, Tim Cozad, Charles Winslow, Hannah Roberts, Lindsay Bohrer, Patrick Rymer, Katie Ash, Jill Ash, Zoe Fisher, Stacy Kidder, Matt Jennings, Wendy Carpenter, Heather Housel, Kristen Wince, Tomela Paden and Randy Rutherford with the Tyler Star News.

The Tyler County Board of Education met in Special Session pursuant to the provisions of SLWV §18-5-4 at Tyler Consolidated Auditorium. Katrina Byers, President of the Tyler County Board of Education, called for a Special Meeting for Public Hearing on School Closure to be held at 6:00 p.m., on Tuesday, January 21, 2025, at Tyler Consolidated School Auditorium, 1993 Silver Knight Drive, Sistersville, West Virginia.

OPENING, PLEDGE OF ALLEGIANCE, AND INVOCATION:

This Special Session of the Tyler County Board of Education was called to order by the President of the Board, Katrina Byers. Mrs. Byers led the assembly in a moment of silence and the Pledge of Allegiance.

MR. HIGHLEY LED THE HEARING ON THE CLOSURE OF SISTERSVILLE ELEMENTARY SCHOOL AND ITS CONSOLIDATION INTO THE NEW TYLER CONSOLIDATED ELEMENTARY SCHOOL:

Summary of Proposed Action Presented by Administration:

Mr. Highley provided an opening statement and summary of the proposed action. Mr. Highley presented a Power Point with details of the closure of the Sistersville Elementary School and the prospective ideas and plans for the new consolidated elementary school.

Facilities: Sistersville Elementary School was built in 1975. The infrastructure is aging and in need of repairs. There is limited technology infrastructure, inefficient energy systems, accessibility concerns, parking and traffic flow issues and no secondary egress road.

Financial: To provide an equal and quality education to each student in Tyler County, the board proposes to consolidate services. This closure would save the Board of Education on maintenance and operating expenses on two buildings that are antiquated.

Personnel: Tyler County Board of Education will continue to follow the WVDE recommended guidelines on the number of employees by maintaining the number of staff members required to deliver a quality education to all students. All staff will have a job.

Student educational program: By consolidating the two elementary schools, it will enhance academic opportunities, improve facilities, increase efficiency, strengthen community bonds, provide better resource allocation, be more environmentally sustainable, be more accessible and safer and provide a unified culture.

Community impact: We value the history and significance of both schools. Consolidations enhances educational opportunities and resources. One campus fosters unity, accessibility and efficiency. Our commitment to educational excellence remains unwavering.

*** Mrs. Byers provided an explanation of the rules established for the hearing, in accordance with West Virginia Policy 6204.

Delegations and Public Comment:

The following audience member spoke as a delegation regarding the closure of SISTERSVILLE ELEMENTARY SCHOOL and its consolidation into TYLER CONSOLIDATED ELEMENTARY SCHOOL.

-Maggie Fisher

ADJOURNMENT:

There being no further business before the Board, Andy Shreves made the motion to adjourn this Special Meeting. Larry Thomas seconded the motion for unanimous approval to adjourn. Meeting was adjourned at 6:35 p.m.

President

Secretary

**MINUTES OF THE MEETING
OF THE
TYLER COUNTY BOARD OF EDUCATION
SPECIAL MEETING – SCHOOL CLOSURE A.I.B.
January 22, 2025**

CALL TO ORDER OF SPECIAL MEETING:

The special meeting was called to order by President, Katrina Byers at 6:00 p.m. at the Tyler Consolidated Middle/High School Auditorium.

BOARD MEMBERS PRESENT:

Katrina Byers, President	Present
Larry Thomas, Vice President	Present
Andy Shreves, Member	Present
Scott Strode, Member	Present
Diana Stender, Member	Present
Shane Highley, Superintendent	Present

OTHERS PRESENT:

See attached sign-in sheets

RESCINDING OF RESIGNATIONS:

Katrina Byers and Scott Strode rescinded their verbal resignations.

The Tyler County Board of Education met in Special Session pursuant to the provisions of SLWV §18-5-4 at Tyler Consolidated Auditorium. Katrina Byers, President of the Tyler County Board of Education, called for a Special Meeting for Public Hearing on School Closure to be held at 6:00 p.m., on Wednesday, January 22, 2025, at Tyler Consolidated School Auditorium, 1993 Silver Knight Drive, Sistersville, West Virginia.

OPENING, PLEDGE OF ALLEGIANCE, AND INVOCATION:

This Special Session of the Tyler County Board of Education was called to order by the President of the Board, Katrina Byers. Mrs. Byers led the assembly in a moment of silence and the Pledge of Allegiance.

MR. HIGHLEY LED THE HEARING ON THE CLOSURE OF ARTHUR I. BOREMAN ELEMENTARY SCHOOL AND ITS CONSOLIDATION INTO THE NEW TYLER CONSOLIDATED ELEMENTARY SCHOOL:

Summary of Proposed Action Presented by Administration:

Mr. Highley provided an opening statement and summary of the proposed action. Mr. Highley presented a Power Point with details of the closure of the Arthur I. Boreman Elementary School and the prospective ideas and plans for the new consolidated elementary school.

Facilities: Arthur I. Boreman Elementary School was built in 1974. The infrastructure is aging and in need of repairs. There is limited technology infrastructure, inefficient energy systems, accessibility concerns, parking and traffic flow issues and no secondary egress road.

Financial: To provide an equal and quality education to each student in Tyler County, the board proposes to consolidate services. This closure would save the Board of Education on maintenance and operating expenses on two buildings that are antiquated.

Personnel: Tyler County Board of Education will continue to follow the WVDE recommended guidelines on the number of employees by maintaining the number of staff members required to deliver a quality education to all students. All staff will have a job.

Student educational program: By consolidating the two elementary schools, it will enhance academic opportunities, improve facilities, increase efficiency, strengthen community bonds, provide better resource allocation, be more environmentally sustainable, be more accessible and safer and provide a unified culture.

Community impact: We value the history and significance of both schools. Consolidations enhances educational opportunities and resources. One campus fosters unity, accessibility and efficiency. Our commitment to educational excellence remains unwavering.

*** Mrs. Byers provided an explanation of the rules established for the hearing, in accordance with West Virginia Policy 6204.

Delegations and Public Comment:

The following audience member spoke as a delegation regarding the closure of ARTHUR I. BOREMAN ELEMENTARY SCHOOL and its consolidation into TYLER CONSOLIDATED ELEMENTARY SCHOOL.

- Carla Wells
- Melissa Kendall
- Pam Stollings
- Brendan Negie
- JC Kimble
- Maggie Fisher
- Roger Weese
- Timothy Stanley

On a motion made by Diana Stender, seconded by Larry Thomas, with a vote of 5-0, the Board approved the following:

1. **MOTION FOR APPROVAL OF THE RECOMMENDATION FOR THE CLOSURE OF ARTHUR I. BOREMAN ELEMENTARY SCHOOL AND ITS CONSOLIDATION INTO TYLER CONSOLIDATED ELEMENTARY SCHOOL CONTINGENT ON THE COMPLETION OF THE NEW SCHOOL CONSTRUCTION**

On a motion made by Andy Shreves, seconded by Scott Strode, with a vote of 5-0, the Board approved the following:

2. **MOTION FOR APPROVAL OF THE RECOMMENDATION FOR THE CLOSURE OF SISTERSVILLE ELEMENTARY SCHOOL AND ITS CONSOLIDATION INTO TYLER CONSOLIDATED ELEMENTARY SCHOOL CONTIGENT ON THE COMPLETION OF THE NEW SCHOOL CONSTRUCTION**

On a motion made by Diana Stender, seconded by Scott Strode, with a vote of 5-0, the Board approved the following:

3. **MOTION FOR APPROVAL OF THE RECOMMENDATION OF THE AMENDMENTS FOR THE COMPREHENSIVE EDUCATION FACILITIES PLAN (CEFP) FOR THE CLOSURE OF ARTHUR I. BOREMAN ELEMENTARY SCHOOL AND CONSTRUCTION OF THE NEW ELEMENTARY SCHOOL**

On a motion made by Larry Thomas, seconded by Andy Shreves, with a vote of 5-0, the Board approved the following:

4. **MOTION FOR APPROVAL OF THE RECOMMENDATION OF THE AMENDMENTS FOR THE COMPREHENSIVE EDUCATION FACILITIES PLAN (CEFP) FOR THE CLOSURE OF SISTERSVILLE ELEMENTARY SCHOOL AND CONSTRUCTION OF THE NEW ELEMENTARY SCHOOL**

ADJOURNMENT:

There being no further business before the Board, Diana Stender made the motion to adjourn this Special Meeting. Larry Thomas seconded the motion for unanimous approval to adjourn. Meeting was adjourned at 7:10 p.m.

President

Secretary



TYLER COUNTY BOARD OF EDUCATION
MEETING ATTENDANCE

Wednesday, January 22, 2025 SCHOOL CLOSURE HEARING

Date

Please Print Your Name Clearly	Please Print Your Name Clearly
1. Taylor & Family	17. Stacy Stacy Roberts
2. Kyra Nolan	18. Gracelyn Smith
3. Macey Shuman	19. Bryan Owens
4. Kylee Reed	20. Brandi Owens
5. Megan, Bryan, & Bray Glover	21. Taylor Glendenning
6. Suzette Miller	22. Ashley Forrell
7. Laken Klages	23. Madison Stallings
8. Summer Miller	24. Pamela Stotum
9. Carla S. Wells	25. Keevi A. Potoczny
10. Randy Adams	26. Cami Williams
11. Kayla Adams	27. Virginia Dillaman
12. Shanna Glover	28. Merritt Grimes
13. Madison Meadows	29. Terri R. McCoy
14. Malak Summ	30. Rachel Kurfis
15. Karissa Buck	31. James James
16. Trenton Webster	32. Faden Morris



TYLER COUNTY BOARD OF EDUCATION
MEETING ATTENDANCE

Wednesday, January 22, 2025 SCHOOL CLOSURE HEARING

Date

<i>Please Print Your Name Clearly</i>	<i>Please Print Your Name Clearly</i>
33 Adam Skinner	49 Miranda Nichols
34 JC Kimbch	50 Stacy Kidder
35 Amanda Kimbch	51 Dusty Kendall
36 Myra Biggs-Dill	52 Melissa Kendall
37 Jessica Lattea	53 Heather Housel
38 Kayla Morris	54 Kuzia D'Vash
39 Tracy Hakes	55 Dean Smith
40 Wyatt Hakes	56 Emily Latta
41 Trevor Hakes	57 Amanda Samuelson
42 Mary Jane Moss	58 Jaelyn Sooney
43 Richard Davis	59 Miranda King
44 Kaylyn Wells	60 Lucia Jedmeier
45 Cindi Greathouse	61 Kristina Morris
46 Tiffany Hayes	62 K. Morris
47 JAN McCaskey	63 Ashton Morris
48 Bessie Billings	64 Steve Kastig



TYLER COUNTY BOARD OF EDUCATION
MEETING ATTENDANCE

Wednesday, January 22, 2025 SCHOOL CLOSURE HEARING

Date

<i>Please Print Your Name Clearly</i>	<i>Please Print Your Name Clearly</i>
65 Heather Jackson	81 Aiden Lancaster
66 Greg + Tiffanie Starkey	82 Chandra Lancaster
67 Cam + Gavin Starkey	83 Ryan L. Walton
68 Kristen Cunningham	84 Mike Fox Gove
69 Beandi Murray	85 Yvonne Goodland
70 Jaxon Murray	86 Dylan S. Murray
71 KYLE RITZ	87 Mary West
72 David Riggle	88 Kayla West
73 Zach Heasley	89 Hannah Roberts
74 Joey Asturi	90 Lindsay Bohrer
75 Kennedy Cain	91 Janella Broughman
76 Melinda Walton	92 Shauna Griffin
77 Greg Starkey	93 Bob Oell
78 Jeff Lancaster	94 Austin Pectic
79 Vanessa Owens	95 Mason Skinner
80 Mark Winters	96 Jeremy Shepherd



TYLER COUNTY BOARD OF EDUCATION
MEETING ATTENDANCE

Wednesday, January 22, 2025 SCHOOL CLOSURE HEARING

Date

<i>Please Print Your Name Clearly</i>	<i>Please Print Your Name Clearly</i>
97 Angie Negie	113 John Boswell
98 Brendan Negie	114/ Dara Jempletos
99 St M P C	115 Lexus Racchio
100 DENNIS Strode	116 MCB
101 Deborah Strode	117 Brandy Baker
102 Daniel Cooper	118 Leah Carroll
103 Emma Cooper	119 Jay E. [Signature]
104 Doug Cooper	120 Bruni H [Signature]
105 Kay Cooper	121 Brandy Jones
106 Laci Strode	122 Robby Jones
107 Sherry Bachman	123 Austin Jones
108 Chris Bachman	124 Patrick Jones
109 Amokinbe	125 Carsyn Campbell
110 Mckenzie Utz	126 Angie Watts
111 Lakyn Fletcher	127 Rae Campbell
112 Mandy Boswell	128 J. Bosa



**TYLER COUNTY BOARD OF EDUCATION
MEETING ATTENDANCE**

Wednesday, January 22, 2025 SCHOOL CLOSURE HEARING

Date

<i>Please Print Your Name Clearly</i>	<i>Please Print Your Name Clearly</i>
Sasha Farrell	Leonard Roberts
Anthony Farrell	Daniel Roberts
Makayla Farrell	Perry Lydrick
Makenzie Farrell	Kendra Lydrick
Timothy Stanley	Mandy Fethy
Marsha Riffle	Mare Fethy
Denton Thomas	Mya Fethy
Nikki Thomas	Emily Fethy
Melissa Young	Crystal Roachie
Jim Cochran	Ethan Koontz
Stephanie Meyer	Jill Ash
Morgan Thompson	Katie Ash
Austin Thompson	Jenny Hoover
Maria Peck	Lindah Hoover
Donald Peck	Glych Blizzard
April Pierce	



**TYLER COUNTY BOARD OF EDUCATION
MEETING ATTENDANCE**

Wednesday, January 22, 2025 SCHOOL CLOSURE HEARING

Date

<i>Please Print Your Name Clearly</i>	<i>Please Print Your Name Clearly</i>
Kristen Wince	Quaden Wince
Brittany Flesher	Brittany Flesher
Ben Wince	Ben Helman
Tristan Cross	Tristan Cross
Sadie Smith	Sadie Smith
Adalison Reed	Sloane Wall
Juliana Letto	Riley Stover
Macie Highley	Juliana Letto
Katie Grimm	Faith Lemasters
Doug Lillis	Ryland Henderson
Taylor Donaldson	Andi Fiber
Zoe Fisher	Leia Headley
Justine Wall	Wish
Scott Wall	JD Wince
Megan Long	Julie Cozad
Jackie Long	Tim Cozad



TYLER COUNTY BOARD OF EDUCATION
MEETING ATTENDANCE

Wednesday, January 22, 2025 SCHOOL CLOSURE HEARING

Date

<i>Please Print Your Name Clearly</i>	<i>Please Print Your Name Clearly</i>
Todd Smith	Todd Smith
Sarah Smith	S. Smith
Amy Yost	Amy Yost
Kerry Mason	Kerry Mason
Steve Wengle	Steve Wengle
Christy Wright	Christy Wright
Lisa Feldmeier	Lisa Feldmeier
Doug Doa, Jr	Doug Doa, Jr
Eric Maxwell	Eric Maxwell
Cindy Peters	
Eric Peters	
Peyton Headly	Peyton Headly
Jillana Westbrock	Jillana Westbrock
Kelly Myer	Kelly Myer
DAVID PEZKAN	David Pezkan
Christina Ferrell	Christina Ferrell



TYLER COUNTY BOARD OF EDUCATION
MEETING ATTENDANCE

Wednesday, January 22, 2025 SCHOOL CLOSURE HEARING

Date

<i>Please Print Your Name Clearly</i>	<i>Please Print Your Name Clearly</i>
Kristy Hoover	Kristy Hoover
Cody Hoover	Cody Hoover
Nicole Mahnel	Doran Weekley
Tomela Padon	Jerry Zwick
Kelly Myers	
Ryan Jones	Ryan Jones
Lillian Jones	Lillian Jones
Nancy Kester	Azlyme Heithorn
Kaymoe Moore	Bree conner
Kaylin Eastman	Analea Lydick
Kasha Hightley	
Sara Conner	
Aubree Williams	
Tiffany Michael	
Matt Jennings	



**TYLER COUNTY BOARD OF EDUCATION
MEETING ATTENDANCE**

Wednesday, January 22, 2025 SCHOOL CLOSURE HEARING

Date

<i>Please Print Your Name Clearly</i>	<i>Please Print Your Name Clearly</i>
Nicole Eapham	
Kaylin Eapham	
Avery Eapham	
Beth Andexler	
Allana Paden	
Jill L. LeMasters	
Megan Campbell	
Rich Williamson	
Bradley Reith	STAP NEWS
Ed Robinson	w. Chrowie
Ryan Schuman	
Ryan R. Wee	
Nicki D Stewart	
Devin Weekley	
Thomas Weekley	

Appendix 9 October 1st certified enrollment for county

Student Lookup Name, birth date, parent, etc. District Tyler County Schools School RAS | Services Tyler County Edit as default Year 2023-2024 Term

Home > Current Data > Data Collection Dashboard

District certification is complete. Use the dropdown to switch between the Current Data view and the Certified Data view. Select a bucket in the left panel to see breakdowns of the total.

Data Collections Details Submit / Certify Enrollment | All Schools | Totals | 1192

All Schools October Collection for Selected FY Current Data

	Pre-K	Kindergarten	1st	2nd	3rd	4th	5th	6th	7th	8th	9th	10th	11th	12th	Totals
Services Tyler County															
Tyler County Schools															
Arthur I Boreman Elementary School	27	39	39	46	32	33	62								278
Sistersville Elementary School	27	41	35	37	39	43	57								279
Tyler Consolidated Middle School								102	75	89					266
Tyler Consolidated High School											106	87	102	74	369
Totals	54	80	74	83	71	76	119	102	75	89	106	87	102	74	1192

Enrollment: 1192

ETS: 1184.5

Excluded: 3

Special Education: 218

English Learners: 0

Low SES: 649

Title I Low SES: 649

Homeless: 14

Unenrolled: 86

JANUARY 6, 2025

JANUARY 21, 2025

TYLER CONSOLIDATED AUDITORIUM

@ 6 PM



Closure and Consolidation of AIB and SES Elementary Schools Into a New Elementary School

Impact Statement

The Tyler County Board of Education (TCBOE) proposes the closure and consolidation of Arthur I. Boreman Elementary and Sistersville Elementary into a newly constructed Tyler Consolidated Elementary School with an anticipated completion date of August 2027. This marks a significant milestone in our commitment to providing exceptional education and opportunities for our students.



Enrollment: AIB (278)

▶ Countywide Enrollment Trend:

- ▶ There is a general decline in student enrollment Pre K – 12 over the past 10-year period, from 1,303 students in 2015-2016 to 1,187 projected for 2025-2026.
- ▶ Staggering Statistic:
 - In 1974-1975 when AIB and SES K-5 opened, there were 1255 elementary students with a total enrollment of 2562. In 2024-2025, AIB and SES combined has 557 elementary students Pre K – 5 with a total county enrollment of 1192. That's a total decrease of 1370 students in 50 years.

▶ Arthur I. Boreman Elementary School:

- ▶ • The specific school shows a consistent decline over the 10-year period, starting from 343 students in 2015-2016 to 269 projected for 2025-2026. It currently has 278 students.
- ▶ • The biggest drop occurred between 2019-2020 (321 students) and 2020-2021 (287 students).



Enrollment: SES (279)

▶ Countywide Enrollment Trend:

- ▶ There is a general decline in student enrollment Pre K – 12 over the past 10-year period, from 1,303 students in 2015-2016 to 1,187 projected for 2025-2026.
- ▶ Staggering Statistic:
 - ▶ In 1974-1975 when AIB and SES K-5 opened, there were 1255 elementary students with a total enrollment of 2562. In 2024-2025, AIB and SES combined has 557 elementary students Pre K – 5 with a total county enrollment of 1192. That's a total decrease of 1370 students in 50 years.

▶ Sistersville Elementary School:

- ▶ Enrollment fluctuates with current enrollment at 279.
- ▶ The number drops significantly between 2019-2020 (288 students) and 2020-2021 (267 students).
- ▶ However, a recovery follows, with projected growth from 267 in 2020-2021 to 280 students in 2023-2024.



Facilities: Arthur I. Boreman Elementary

7

- Age: Built in 1974, with renovations in 1996
- Square Footage: approximately 54,000 sq. ft.
- Capacity: Designed for 450 students
- Amenities:
 - Classrooms, Gymnasium, Cafeteria, Library/Media Center, Playgrounds
 - Parking for 75+ vehicles
 - WVDE Office of School Facilities Report on Condition: Fair to Good

► Shared Concerns:

- Aging infrastructure: Windows, Doors, Brick, Flooring, Sidewalks, HVAC, Copper Piping, Fire Alarm/Pump
- Limited technology infrastructure
- Inefficient energy systems
- Accessibility concerns (ADA compliance)
- Parking and traffic flow issues



Facilities: Sistersville Elementary

- Age: Built in 1975, with renovations in 1999
- Square Footage: approximately 43,000 sq. ft.
- Capacity: Designed for 350 students
- Amenities:
 - Classrooms, Gymnasium, Cafeteria, Library/Media Center, Playground
 - Parking for 50+ vehicles
 - WVDE Office of School Facilities Report on Condition: Fair

► Shared Concerns:

- Aging infrastructure: Windows, Doors, Brick, Flooring, Sidewalks, HVAC, Copper Piping, Fire Alarm
- Limited technology infrastructure
- Inefficient energy systems
- Accessibility concerns (ADA compliance)
- Parking and traffic flow issues
- Secondary Egress Road Issue



Personnel / Transportation

- **Personnel:**

- ▶ Tyler County Board of Education will continue to follow the WVDE recommended guidelines on the number of employees but maintain the number of staff required to deliver a quality education to all students. All staff will have a job.

- **Transportation:**

- ▶ There are no major or negative variances with any of the bus routes. The driving distance between Arthur I. Boreman Elementary School and Tyler Consolidated Elementary School is approximately 5.9 miles. The driving distance between Sistersville Elementary School and Tyler Consolidated Elementary School is approximately 9.1 miles.



Finance

- To provide an equal and quality education to each student in Tyler County, the board proposes to consolidate services. This closure would save the Board of Education on maintenance and operating expenses on two buildings that are antiquated.



Student Educational Program

11

- Enhanced Academic Opportunities
- Improved Facilities
- Increased Efficiency
- Stronger Community Bonds
- Better Resource Allocation
- Environmental Sustainability
- Accessibility and Safety
- Unified School Culture



Community

- We value the history and significance of both schools.
- Consolidation enhances educational opportunities and resources.
- One campus fosters unity, accessibility, and efficiency.
- Our commitment to educational excellence remains unwavering.



Embracing Change, Building Excellence

The consolidation of Arthur I. Boreman Elementary and Sistersville Elementary into Tyler Consolidated Elementary School represents a bold step forward. Together, we will create a dynamic learning environment that supports the unique needs of our students, fosters community engagement, and prepares our children for success in an ever-changing world.



Educational Specifications

▶ Inspire: Learning Environment Planning, LLC

- Rob Pillar – Consultant

▶ Process:

- The educational specifications committee participated in a series of exercises, workshops, and focus group discussions designed to envision learning environments needed for the future of Tyler County Schools.



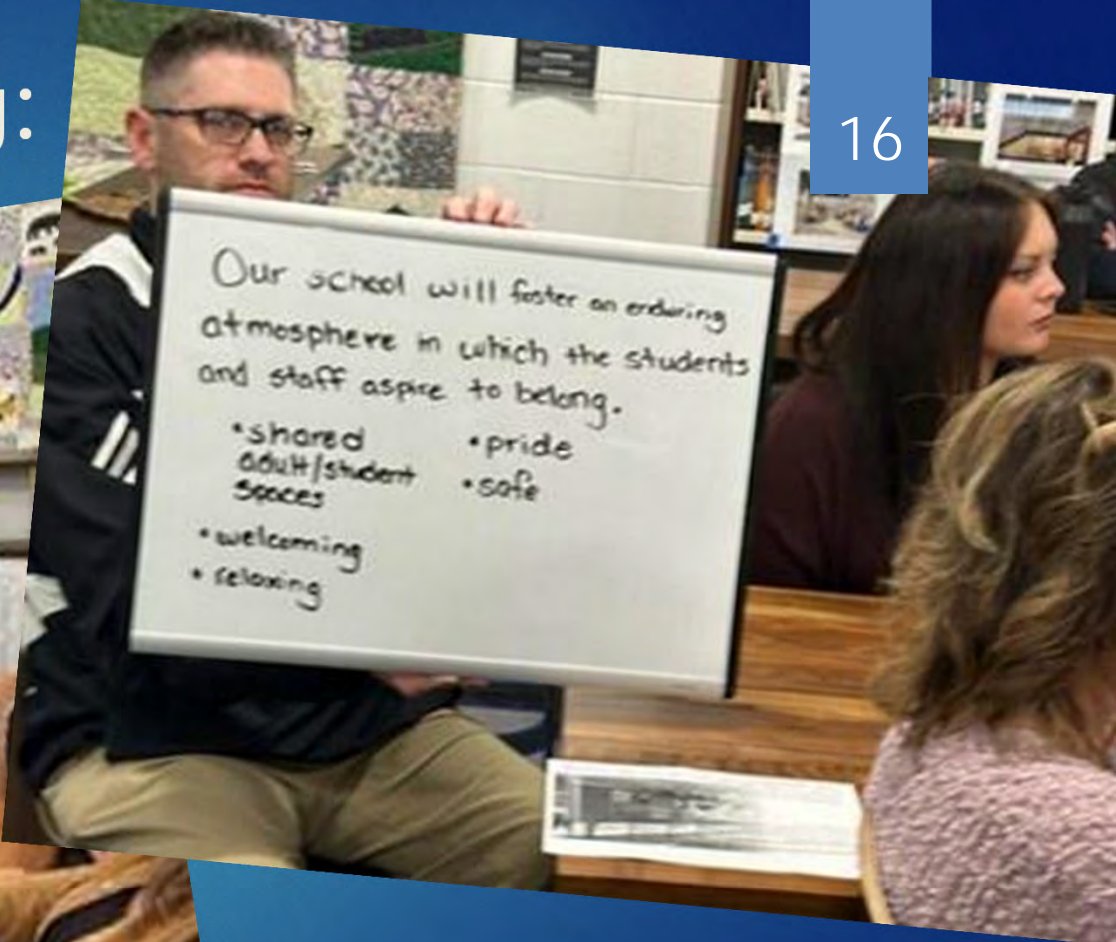
Educational Specifications Committee

- ▶ Comprised of 57 members
 - Rob Pillar – Consultant
 - TCS Central Office Staff
 - AIB & SES – Teachers, Service Personnel, SROs, Nurses, Social Workers
 - Board of Education Members
 - Community Members / Local Businesses
 - Parents



Educational Visioning:

January 9, 2024



Educational Visioning: January 9, 2024

17



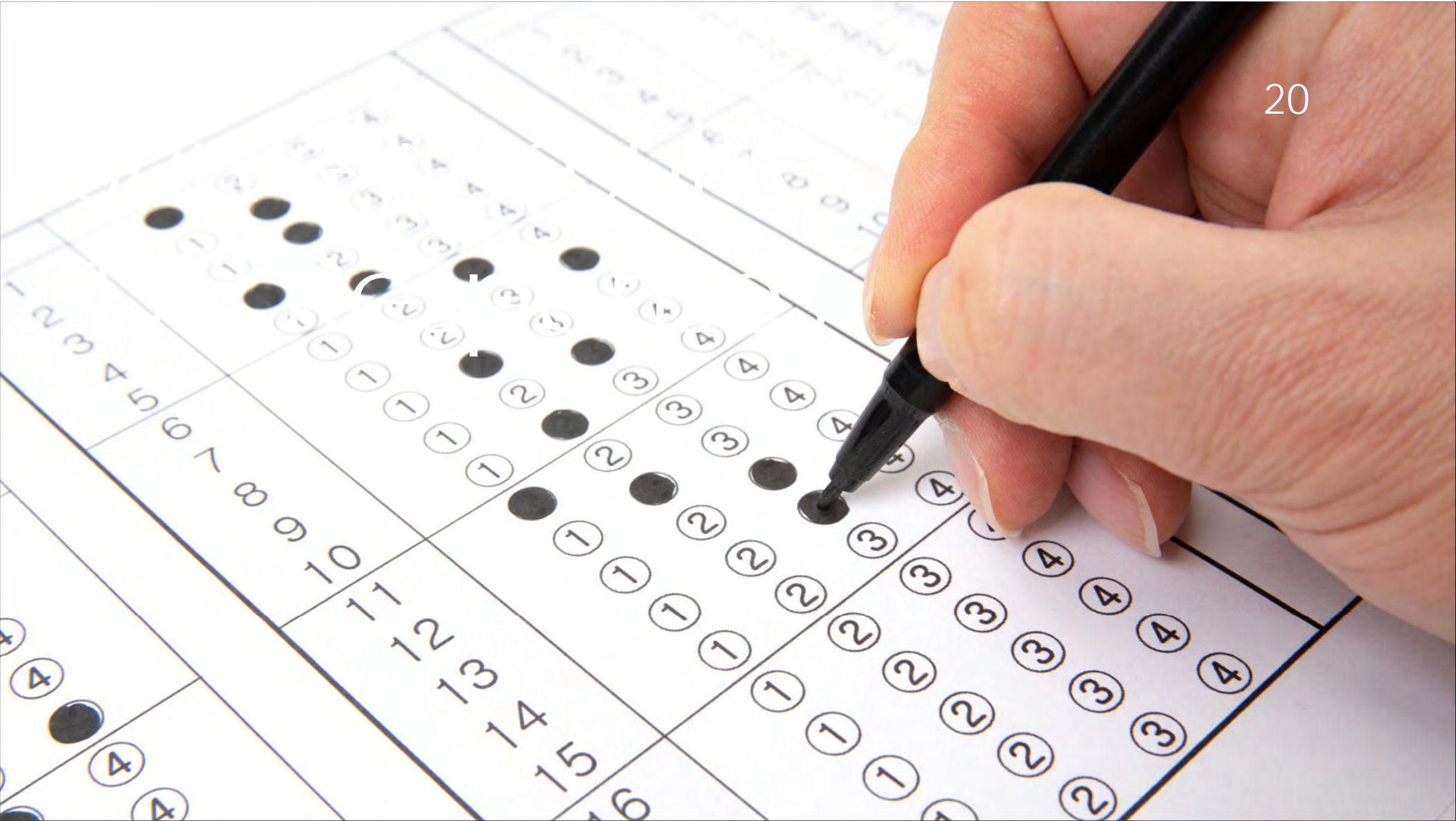
Focus Groups: January 22-23, 2024

18



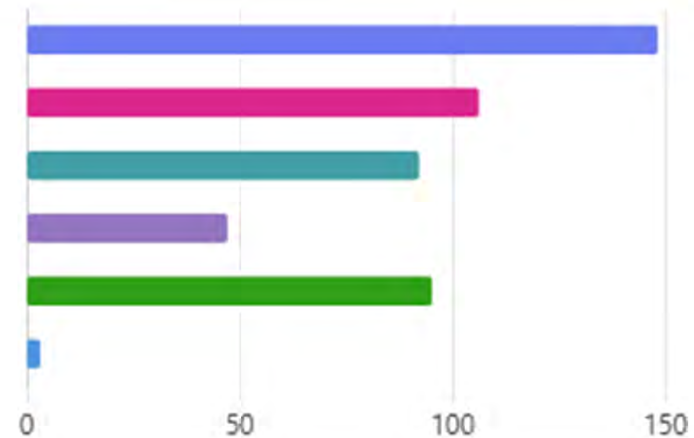
Focus Groups: January 22-23, 2024





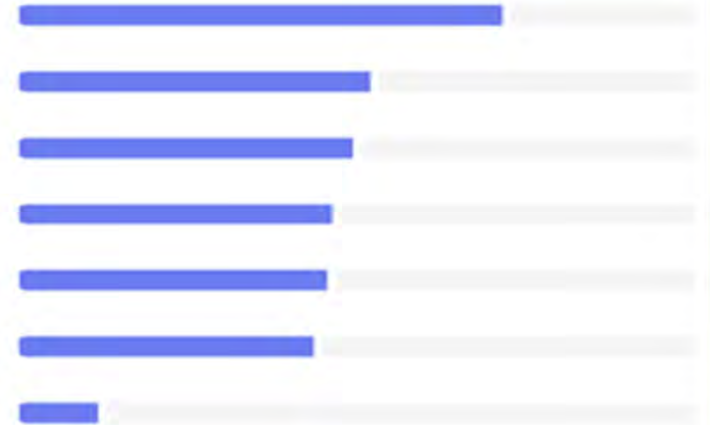
What academic or extracurricular programs are most important to you for your child's education?

● STEM (Science, Technology, Engineering, Math)	148
● Arts and Music	106
● Physical education and sports	92
● Language immersion	47
● Social-emotional learning and mental health resources	95
● Other	3



Rank the importance of types of spaces in the new school design.

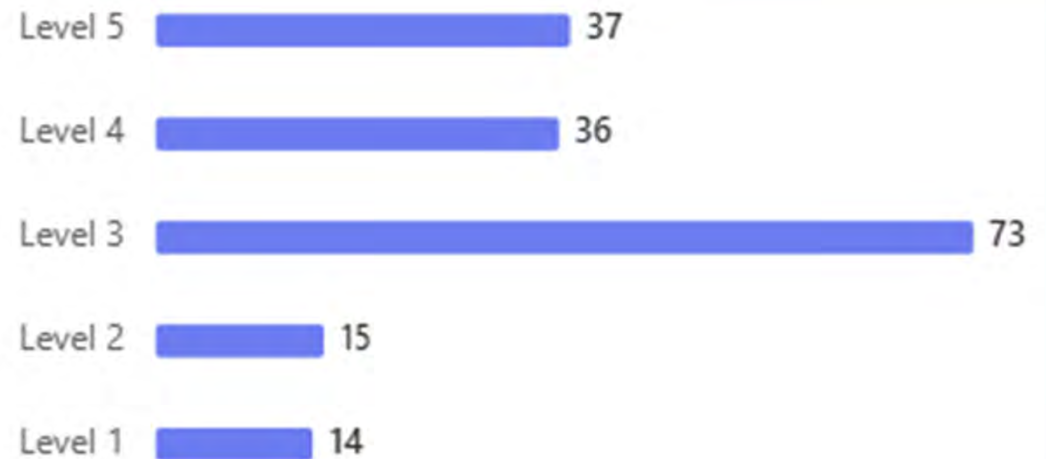
- 1 Large, flexible classrooms for collaborative learning
- 2 Outdoor learning spaces (gardens, courtyards)
- 3 A state-of-the-art library/media center
- 4 Dedicated arts and performance spaces
- 5 Gymnasiums and recreational areas
- 6 Quiet zones for individual work or sensory breaks
- 7 Other



How important is incorporating sustainable and eco-friendly features in the school's design?

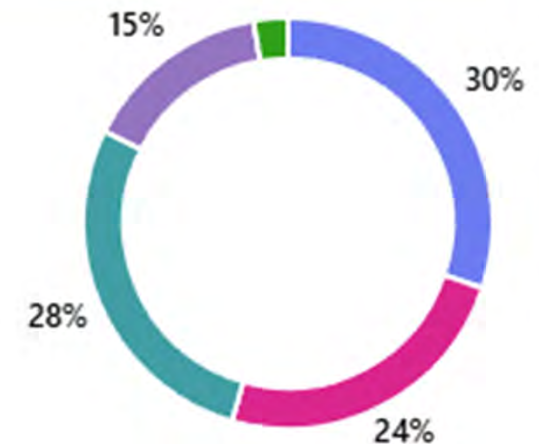
3.38

Average Rating



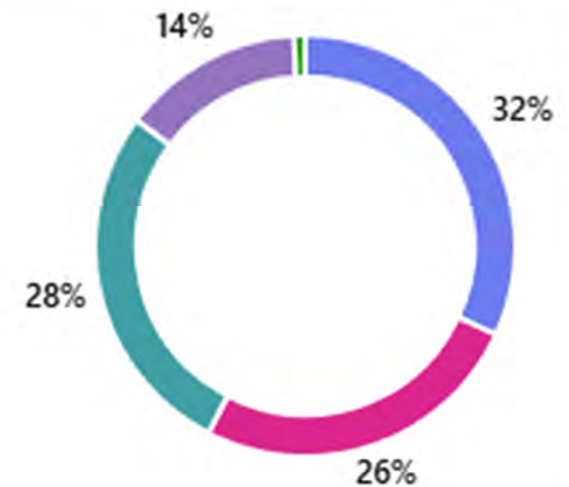
What safety and security features are most important to you?

● Secure building entrances	168
● Visible and accessible staff for supervision	135
● Cameras and monitoring systems	156
● Natural disaster preparedness (e.g. earthquake-safe zones)	83
● Other	15



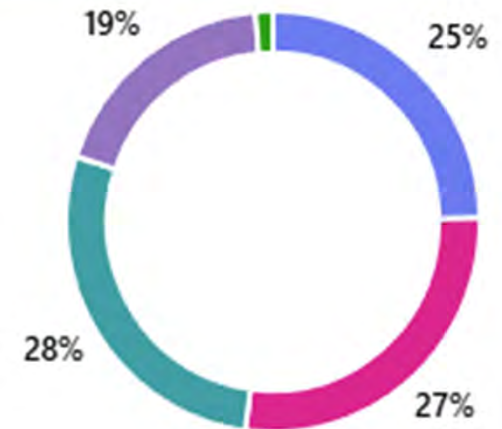
What types of technology do you think are essential for the classrooms?

● Interactive whiteboards	147
● 1:1 student devices (laptops/tablets)	118
● Advanced Wi-Fi and connectivity	127
● Virtual reality/augmented reality tools	64
● Other	4



What community-focused features would you like included in the school?

● Parent resource center	109
● Multi-use spaces for events	121
● After-school care programs	123
● Community gardens or shared outdoor spaces	82
● Other	6



Conceptual Renderings

27

Please Note:

- The following renderings are an artistic interpretation of the design.
- Renderings are not meant to be an exact replica of construction.
- Some items may not be standard and/or represent an exact symbol.
- Exact grading may differ.
- Colors and finishes are not represented fully by renderings.



Preliminary Conceptual Aerial View From Route 18 side of facility

28



Images Courtesy of:



Preliminary Conceptual View Main Entrance

29



Images Courtesy of:



Preliminary Conceptual View Parent Pickup / Dropoff

30



Images Courtesy of:



Preliminary Conceptual View

Grades 1-5 Classroom Wing from
Tyler Consolidated Rear Parking Lot



Images Courtesy of:



Preliminary Conceptual View Access Road Entrance

32



Images Courtesy of:



Collaborative Learning Community

33



McKINLEY
ARCHITECTURE + ENGINEERING



Common Concerns

Q: What will happen to the existing AIB and SES buildings?

A: Building will be sold. The TCBOE will not keep or maintain buildings after consolidation.



Common Concerns

Q: What will the name of the new school be?

A: The school name has not yet been determined. This will be determined by a committee consisting of all stakeholders.



Common Concerns

Q: AIB and SES have been well maintained, why do we need a new school?

A: Consolidating two 50-year-old schools into one modern facility ensures long-term efficiency, improved educational resources, and reduced maintenance costs. While the existing buildings are well-maintained, they are aging and may not support future needs. Leveraging the current influx of oil and gas revenue is a rare opportunity to invest in a sustainable, state-of-the-art school that will serve students and the community for the next 50 years and beyond.



Common Concerns

Q: Why are they building a new school when AIB and SES were built not long ago?

A: Both schools are nearly 50 years old and exhibiting failing infrastructure.



Common Concerns

38

Q: Is this building going to raise our taxes?

A: The levy rate has not changed in since 1974. This building is being built with current funds. There will be no bonds or additional taxes.



Common Concerns

39

Q: All of our students will be in the same area, what about safety?

A: With the additional bridge and access road having a central location will allow us to better protect our students.



Delegations:

- Delegations will present in order of sign in sheet.
- Delegations will be limited to 10 minutes each.
- Board Members will not respond to questions.
- School Officials may provide additional information at the conclusion of each delegation.

