



West Virginia DEPARTMENT OF
EDUCATION

GASB Update, Year-End Closing & Financial Statements

WVDE Office of School Finance
Josh Harner

1



West Virginia DEPARTMENT OF
EDUCATION

GASB UPDATE

2

Updated GASB Guidance Effective Immediately

• **Question 5.1 in Implementation Guide 2021-1**

- “Should a government’s capitalization policy be applied only to individual assets, or can it be applied to a group of assets acquired together? Consider a government that has established a capitalization threshold of \$5,000 for equipment. If the government purchases 100 computers costing \$1,500 each, should the computers be capitalized?”
 - **Answer:** A government **should** capitalize assets whose individual acquisition costs are less than the threshold for an individual asset if those assets in the aggregate are significant.
 - Original guidance provided in Implementation Guide 2015-1 used the word “may” instead of “should”
- Examples
 - Computers
 - Classroom Furniture
 - Library Books



GASB Statements Effective for FY25

• **GASB 101: Compensated Absences**

- The requirements of this Statement are effective for fiscal years beginning after December 15, 2023 (FY25)
- The objective of this Statement is to better meet the information needs of financial statement users by updating the recognition and measurement guidance for compensated absences.



GASB Statements Effective for FY25

• **GASB 101: Compensated Absences (continued)**

- The new standard defines three general criteria for recognizing a liability for unused leave balances:
 - The leave is attributable to **services already rendered**;
 - The leave **accumulates**; and
 - The leave is **more likely than not** to be used for time off or otherwise paid or settled.



5

GASB Statements Effective for FY25

• **GASB 101: Compensated Absences (continued)**

- Requires an organization to recognize a compensated absence liability for
 - Leave that has not been used but is more likely than not (likelihood is greater than 50%) to be used or settled in the future
 - Leave that has been used but not yet paid in cash or settled (salaries and applicable payroll taxes)
 - Examples include:
 - Annual/Personal Leave
 - Sick Leave
 - Liabilities for the following compensated absences are not to be recognized until the Leave commences and is used:
 - Parental Leave
 - Military Leave
 - Jury Duty Leave
 - Leave that is more likely than not to be settled through conversion to defined benefit postemployment benefits should not be included as a liability for compensated absences



6

GASB Statements Effective for FY25

• ***GASB 101: Compensated Absences (continued)***

- Calculating the liability amount
 - Multiply the accumulated leave that's more likely than not to be paid or settled through noncash means by the employee's pay rate as of the financial reporting date.
 - Make sure to include all salary related items (taxes, benefits, etc...)
 - Counties will need to analyze how much of the employee leave balances at year end are "more likely than not" to be used as time off in future report periods.
 - Compile historical data.
 - Utilized trends in the data.
 - Be sure to document the factors considered in the estimation process.



GASB Statements Effective for FY25

• ***GASB 101: Compensated Absences (continued)***

- Calculating the liability amount (continued)
 - If the leave is not attributable to a specific employee as of the date of the financial statements (for example, if leave has been donated to a shared employee leave pool), a government should measure the liability using an estimated pay rate that is representative of the eligible employee population.
 - Changes to the measurement of the liability in future periods due to a change in pay rate should be recognized in the period of the change.



GASB Statements Effective for FY25

• ***GASB 102: Certain Risk Disclosures***

- The requirements of this Statement are effective for fiscal years beginning after June 15, 2024 (FY25) and all reporting periods thereafter. Earlier application is encouraged.
- The objective of this Statement is to provide users of government financial statements with essential information about risks related to a government's vulnerabilities due to certain concentrations or constraints



9

GASB Statements Effective for FY25

• ***GASB 102: Certain Risk Disclosures (continued)***

- Limited to risks arising due to certain concentrations or constraints
 - **Concentration** is defined a lack of diversity related to an aspect of a significant inflow of resources or outflows of resources
 - **Constraint** is defined as a limitation that is imposed by an external party or by formal action of a government's highest level of decision-making authority



10

GASB Statements Effective for FY25

• ***GASB 102: Certain Risk Disclosures (continued)***

- Governments should disclose a concentration or constraint if:
 - It is known to the government prior to the issuance of the financial statements.
 - The concentration or constraint makes the reporting unit vulnerable to a risk of a substantial impact.
 - An event or events associated with the concentration or constraint that could cause a substantial impact has occurred, begun to occur, or more likely than not to occur within 12 months of the date the financial statements are issued.



11

GASB Statements Effective for FY25

• ***GASB 102: Certain Risk Disclosures (continued)***

- Disclosure Requirements
 - Should include:
 - The concentration or constraint.
 - Each associated event that could cause substantial impact if the event had occurred or had begun to occur prior to the issuance of financial statements.
 - Actions taken by the government prior to issuance of the financial statements to mitigate the risk.



12

GASB Statements Effective for FY26

• ***GASB 103: Financial Reporting Model Improvements***

- The requirements of this Statement are effective for fiscal years beginning after June 15, 2025 (FY26), and all reporting periods thereafter. Earlier application is encouraged.
- The objective of this Statement is to improve key components of the financial reporting model to enhance its effectiveness in providing information that is essential for decision making and assessing a government's accountability. This Statement also addresses certain application issues



13

GASB Statements Effective for FY26

• ***GASB 103: Financial Reporting Model Improvements (continued)***

- Establishes new or modifies existing requirements related to:
 - Management's Discussion and Analysis (MD&A)
 - Unusual or infrequent items
 - Presentation of proprietary fund statement of revenues, expenses, and changes in fund net position
 - Information about major component units in basic financial statements
 - Budgetary comparison information
 - Financial trends information



14

GASB Statements Effective for FY26

• ***GASB 103: Financial Reporting Model Improvements (continued)***

• Management's Discussion and Analysis (MD&A)

- Requirements stay the same, but the structure has been refined to focus on five specific sections
 - Overview of Financial Statements
 - Financial Summary
 - Detailed Analyses
 - Significant Capital Asset and Long-Term Financing Activity
 - Currently Known Facts, Decisions, or Conditions



GASB Statements Effective for FY26

• ***GASB 103: Financial Reporting Model Improvements (continued)***

• Unusual or Infrequent Items

- Previously extraordinary and special items.
- Defined as transactions and other events that are either unusual in nature or infrequent in occurrence.
- These items are required to be separately presented as the last item before the net change in resource flows in the government-wide and governmental fund statements.
- Disclosure in the notes to financial statements is required.
 - Disclose the program, function, or identifying activity.
 - Disclose whether the item was within management's control.



GASB Statements Effective for FY26

• ***GASB 103: Financial Reporting Model Improvements (continued)***

- Budgetary Comparison Information
 - General fund and each major special revenue fund that has a legally adopted annual budget must be included in required supplementary information (RSI).
 - Separate columns for the variances between:
 - Original and Final Budget
 - Final Budget and Actual Amounts
 - Explanation of significant variances between these two columns is required in the notes to the RSI as opposed to the MD&A.



GASB Statements Effective for FY26

• ***GASB 104: Disclosure of Certain Capital Assets***

- The requirements of this Statement are effective for fiscal years beginning after June 15, 2025 (FY26), and all reporting periods thereafter. Earlier application is encouraged.
- The objective of this Statement is to improve key components of the financial reporting model to enhance its effectiveness in providing information that is essential for decision making and assessing a government's accountability. This Statement also addresses certain application issues



GASB Statements Effective for FY26

• ***GASB 104: Disclosure of Certain Capital Assets (continued)***

- Separate Disclosure of Certain Capital Assets
 - Information about the following capital assets and related amortization should be disclosed separately
 - Lease assets reported in accordance with GASB 87
 - Intangible right-to-use assets in accordance with GASB 94
 - Subscription assets in accordance with GASB 96
 - Intangible assets other than those mentioned above.



GASB Statements Effective for FY26

• ***GASB 104: Disclosure of Certain Capital Assets (continued)***

- Capital Assets Held for Sale
 - A capital asset is a capital asset held for sale if:
 - The County Board has decided to pursue the sale of the asset
 - It is probable that the sale will be finalized within one year of the financial statement date.
 - Factors to consider when evaluating whether it is probable that the sale will be finalized within one year of the financial statement date
 - Whether the asset is available for immediate sale in its present condition
 - Whether an active program to locate a buyer has been initiated, which may include the asset being put out for bid
 - Market conditions for selling that type of asset
 - Regulatory approvals needed to sell the asset



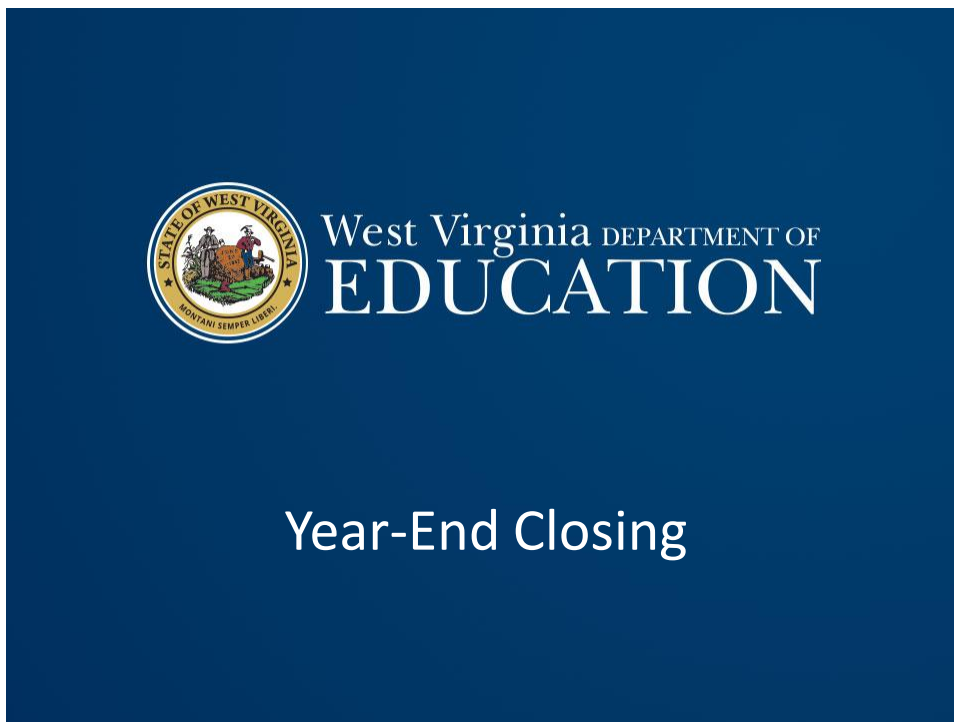
GASB Statements Effective for FY26

• ***GASB 104: Disclosure of Certain Capital Assets (continued)***

- Capital Assets Held for Sale (continued)
 - A County Board should evaluate whether a capital asset is a capital asset held for sale each reporting period.
 - A capital asset held for sale should continue to be reported within the appropriate major class of capital asset
 - Additionally, a County Board should disclose capital assets held for sale in the notes to the financial statements
 - Historical cost
 - Accumulated depreciation or amortization
 - Carrying amount of debt for which capital assets held for sale are pledged as collateral



21



22

Year-End Closing

- Year-end closing entries are needed to record activity for the fiscal year that occurred after June 30th or to adjust for subsequent fiscal year activity that occurred during the current fiscal year.
- Fund financial statements are prepared using the “current financial resources measurement focus” and the “modified accrual basis of accounting.”
 - Revenue is recognized when “measurable and available”
 - Revenue is available for all LEAs, ESCs, and MCVs if received within 60 days after year-end.
 - Revenue is “measurable” when the amount of the transaction can be determined.
 - Expenditures are generally recorded when the related fund liability is incurred, except:
 - Unmatured principal and interest on general long-term debt,
 - Claims and judgments, and
 - Compensated absences.



Year-End Closing: Revenue

- Since revenues must be recognized when collected within 60 days after year-end, LEAs must keep track of all receipts collected during July and August that relate to the most recent fiscal year-end.
- Tracking the subsequent collections of year-end revenues allows LEAs to calculate the total amount of deferred inflows.
- Revenue recognition – grants received in advance:
 - Nonexchange transactions – two types common to school boards:
 - Government-mandated – a government at one level provides resources to a government at another level and requires the recipient to use the resources for a specified purpose.
 - Voluntary – legislative or contractual agreements, other than exchanges, entered into willingly by the parties to the agreement.
- Eligibility requirements must be met to recognize revenue.



Year-End Closing: Revenue

- Eligibility requirements:
 - Required **characteristics of recipients** as specified by the provider have been met.
 - **Time requirements** (the period when the resources are required to be used or when use is first permitted) have been met.
 - **Reimbursements** – expenditure-driven grants where the recipient must incur allowable costs prior to requesting drawdown of the funds from the grantor.
 - Federal awards generally fall under this requirement. Therefore, federal revenue is typically recognized when the other eligibility requirements are met AND allowable costs have been incurred by the LEA.
 - State awards are generally NOT expenditure-driven. Therefore, state revenue is typically recognized as soon as the other eligibility requirements are met.
 - **Contingencies** – receipt of funds is contingent upon specified actions of the recipient and that action has occurred.



25

Year-End Closing: Revenue

- Purpose restrictions – eligibility requirements DO NOT include purpose restrictions (GASB 33, par. 62).
 - Can only be met when a transaction has already occurred.
 - Only affect fund balance categories (not revenue recognition).
- Revenue recognition under GASB 33:
 - Grant funds received in a period BEFORE the grant period begins:
 - Time requirement has not been met. Therefore, revenue cannot be recognized when the funds are received.
 - Funds received should be recorded as deferred inflows of resources.
 - Grant funds received DURING the grant period:
 - Time requirement has been met.
 - Funds received are immediately recognized as revenue (assuming other eligibility requirements have been met as well).
 - Purpose restrictions are not considered for revenue recognition. Therefore, revenue is not recognized as expenditures are made against the project/grant.
 - This also applies to multiple-year grant awards.



26

Year-End Closing: Revenue

- Example (Food Svc): Total Food Service billings for FY25 were \$250,000. Collections through June 2025 totaled \$150,000 and collections during July and August 2025 totaled \$25,000.
 - Assuming all balances are collectible, the total deferred inflows of resources at June 30, 2025 is calculated as follows:

• Total billings for FY25:	\$250,000
• Less Collections through June:	(150,000)
• Less Collections July - August:	<u>(25,000)</u>
• Total Deferred Inflows:	<u>\$ 75,000</u>
 - The \$75,000 balance of deferred inflows of resources is considered to be “unavailable” under the current financial resources measurement focus. Therefore, it is not reported in current year fund level revenue. However, it is still included in accounts receivable at year-end.



Year-End Closing: Revenue

- Using the example from the previous slide, the total revenue recognized for FY25 and the remaining receivable balance at year-end are:
 - FY25 Revenue Recognition:

• Total billings for FY25:	\$250,000
• Less unavailable receivables:	<u>(75,000)</u>
• Total FY25 Revenue recognized:	<u>\$175,000</u>
 - June 30, 2025 Accounts Receivable:

• Total billings for FY25:	\$250,000
• Less collections through June 30 th :	<u>(150,000)</u>
• Accounts Receivable at June 30 th :	<u>\$100,000</u>



Year-End Closing: Revenue

- The year-end WVEIS closing entry for the example on slide 7 would be:

dr. 11..00153.001	Other A/R	\$100,000	
	cr. 11..00601.006	Deferred Inflows	\$75,000
	cr. 11..01989.009	Revenue	\$25,000

- Remember that the \$150,000 of collections made through June 30, 2025, should already be recognized as revenue at the time the month of June was closed (beginning of July).



29

Year-End Closing: Revenue

- Accrued Property Taxes
 - OSF's official guidance on year-end property tax entries can be found at: <https://wvde.us/finance-and-administration/school-finance/workshops/workshop-2015/>. Then select the property tax year end entries handout.
 - All LEAs are expected to utilize OSF guidance when such guidance has been made available.
 - However, auditors should consider the methods used by each county to determine whether those methods are appropriate and whether those methods materially misstate the financial statement balances related to property taxes.



30

Year-End Closing: Revenue

- Examples of deferred inflow year-end entries are:
 - Property taxes
 - Food service collections
 - E-Rate
 - Medicaid
 - Federal reimbursements/drawdowns
 - Bank interest income
- You can review examples of select deferred inflow year-end WVEIS entries at: <https://wvde.us/finance-and-administration/school-finance/workshops/workshop-2015/>. Then select the “Sample GAAP Entries – Summer Conf 15.pdf” file.



31

Year-End Closing: Expenditures

- Types of year-end closing entries for expenditures:
 - Prepaid Expenditures/Expenses – Cash paid prior to year-end for a cost relating to a subsequent period.
 - Liabilities – Cash paid after year-end for a cost incurred prior to year-end.
 - Liabilities – Invoices received and unpaid for costs incurred prior to year-end.
 - Non-cash accruals (i.e. accrued interest on debt, retainage payable, etc.)
- Common examples of prepaid expenditures are:
 - Insurance premiums relating to a subsequent period (i.e. flood, liability, vehicle, etc.)
 - Workers' compensation premiums paid in advance of the coverage period.



32

Year-End Closing: Expenditures

- To record a prepaid expenditure, you must calculate the amount of the payment that relates to the subsequent period.
- Example: Workers' Comp. premium paid in March 2025 (\$300,000) with a coverage period of April 2025 through September 2025.
 - Of the 6-month policy period, only 3 months related the current fiscal year. Therefore, the other 3 months are prepaid.
 - Since exactly one half of the policy period relates to a subsequent period, half of the premium must be recorded as prepaid expenditure.

• Dr.	11..00183.001	Prepaid workers' comp	\$150,000	
• Cr.	11..XXXXX.261	Workers' Comp. Exp.		\$150,000



West Virginia DEPARTMENT OF
EDUCATION

33

33

Year-End Closing: Expenditures

- Since many of the invoices relating to costs incurred during FY25 will be received after June 30th, LEAs must make manual adjustments within WVEIS to recognize those invoices as expenditures and liabilities.
- Analysis of July and August checks can be a good way to ensure all invoices related to the fiscal year being closed have been accrued to accounts payable at June 30th.
- Please note that you must also accrue liabilities for any invoice relating to the fiscal year being closed whether paid within 60 days or not.
 - If, at the time the financial statements are prepared, you are aware of an invoice/incurred expenditure that relates to the fiscal year being closed, you should accrue the expenditure as a liability at June 30th.



West Virginia DEPARTMENT OF
EDUCATION

34

34

Year-End Closing: Expenditures

- LEAs must also make expenditure adjustments at year-end for non-cash accruals such as:
 - Food service sponsor contribution transfer
 - Indirect cost transfers
 - Unfunded retirement allocation
 - Retainage payable on current construction contracts
 - Reclassification of deferred pays to cash
 - Accrued interest payable



35

Year-End Closing: Fund Balance

- The final entries you will need to make in WVEIS are to adjust the ending balances of your various fund balance accounts:
 - Non-spendable
 - Restricted
 - Committed
 - Assigned
- Non-spendable fund balance – consists of items that are not spendable in form or are legally required to remain intact:
 - Inventories
 - Prepaid expenditures (including TDC forfeitures)
 - Endowment
 - Often understated or missed completely.
 - Very easy to check balance for reasonableness since it is tied directly to some asset balances.



36

Year-End Closing: Fund Balance

- Restricted fund balance – consists of balances containing use constraints that are externally enforceable.
 - Pass-through entity restrictions such as WVDE or feds.
 - **Excess levies.**
 - Restrictions due to laws or regulations of other governments.
- Committed fund balance – Use constraints placed on funds by the highest decision-making body within the government (local board).
 - Must have required action by the Board to restrict the funds.
 - Must also require Board action to remove those restrictions.
 - Board action must have taken place prior to the end of the reporting period.
- Assigned fund balance – Use constraints placed on funds by others within the government (superintendent or treasurer).
 - Does not require direct Board action to add or remove use constraints.
 - Less formal action necessary.
 - Action can take place before or after the end of the reporting period.



Year-End Closing: Fund Balance

- Valid WVEIS account codes for fund balances are:
 - Non-spendable – XX..00751.007
 - Restricted – XX..00752.007
 - Committed – XX..00771.007
 - Assigned – XX..00753.007
 - Unassigned – XX..00772.007
- You should adjust non-spendable, restricted, committed, and assigned fund balances to their known year-end balances by adjusting the residual balance of the unassigned category.



Year-End Closing: Final Steps

- Once you are comfortable that all year-end closing-entries have been posted in WVEIS, you should:
 - Close out the 13th month and submit the data file to WVDE (same due date as financial statement submission to WVDE).
 - Run WVEIS reports to use in preparation of the annual financial statements.
- Common year-end WVEIS reports to utilize during financial statement preparation:
 - Balance sheet for each fund being maintained by the Board
 - Revenue by source report for each fund
 - Revenue by project for all funds
 - Expenditure by function report for each fund
 - Fixed asset listing and depreciation report
 - Note that you must ensure that all fixed asset activity for the reporting period must be updated within the WVEIS capital asset module.
 - This report will be used for the governmental conversion.



West Virginia DEPARTMENT OF
EDUCATION

39

39



West Virginia DEPARTMENT OF
EDUCATION

Financial Statements

40

Financial Statements: Introduction

- MD&A template has been rolled to FY25.
- Note disclosures template is still in the process of being rolled to FY25.
- Excel template has been rolled to FY25:
 - The financial statement Excel template will continue to be separated into 3 files:
 - Financial Statement Template 25
 - GASB 68 Template 25
 - GASB 75 Template 25
 - We anticipate release of all financial statement templates and related files by the first week of August 2025.



41

Financial Statements: GASB 68 Update

- The audited TRS GASB 68 schedules for the measurement period ending June 30, 2024, have already been released and are available on CPRB's website.
- GASB 68 has its own stand-alone template.
 - Builds GASB 68 conversion entries, notes, and RSI schedules.
 - Allows counties to continue to use their own Excel financial statement template for the basic financial statements.
 - Prevents multiple versions of the main Excel template due to changes in GASB 68 information.



42

Financial Statements: GASB 75 Update

- The audited RHBT GASB 75 schedules for the measurement period ending June 30, 2024, have already been released and are available on PEIA's website.
- GASB 75 has its own stand-alone template.
 - Builds GASB 75 conversion entries, notes, and RSI schedules.
 - Allows counties to continue to use their own Excel financial statement template for the basic financial statements.
 - Prevents multiple versions of the main Excel template due to changes in GASB 75 information.



43

Financial Statements: Preparation

- Key dates:
 - **September 16, 2025** - Due date for ESC and MCVV financial statements.
 - **September 29, 2025** – Due date for LEA financial statements and WVEIS data file submission.
- Item 19 in the Financial Statement Instructions for FY25 includes a summarization of changes made to the financial statement templates when compared to the prior year's template.



44

Financial Statements: Preparation

- Documents due with submission to OSF:
 - MD&A
 - Government-wide statements
 - All applicable fund basis statements, including fiduciary funds (i.e., school funds)
 - Reconciliation schedules
 - Budgetary comparison schedules for each fund
 - All applicable notes to the financial statements
 - WVEIS special projects worksheet, by fund
 - Schedule of excess levy revenues and expenditures, if applicable
 - Schedule of encumbrances outstanding at year-end
 - Encumbrance distribution spreadsheet



45

Financial Statements: Preparation

- The following additional schedules must be prepared and retained at the central office:
 - List of expenditures in excess of \$250.
 - Schedule of salaries paid to each board member and the superintendent.
 - Schedule of all debts owed by the board.
- All files required to be submitted to OSF should be sent via e-mail to the OSF coordinator assigned to your county.
 - Lori Elliott (lori.elliott@k12.wv.us) – Barbour to Jackson
 - Lacey Menello (lacey.pettry@k12.wv.us) – Jefferson to Pendleton
 - Justin Hannah (justin.hannah@k12.wv.us) – Pleasants to Wyoming



46

Financial Statements: Preparation

- The financial statement templates should be completed in the following order:
 - Excel files (Any of the files can be completed first. However, the GASB 68 and GASB 75 templates must be completed in order to complete conversion entries in the “JEs” tab of the main financial statement Excel file.)
 - MD&A (Word) and note disclosures (Word)
- Many items in the Excel files link directly to the notes and MD&A, so it is important to complete all three Excel files first.



47

Financial Statements: Preparing the Excel Files

- Due to the vast number of formulas and linked values within the Excel files, each tab has been locked to only allow editing in yellow highlighted cells.
- This helps to prevent accidental deletion of links and formulas.
- The current year password to unprotect the worksheets is **“BOE2025.”**
- The password is typed in **red/bold** font in the top of every protected worksheet and is included within item number 19 of the official Financial Statement Instructions 25 file.
- WATCH WINDOW! – the watch window continues to be available for the three Excel files. This allows all users to monitor check figures throughout the template within one window.



48

Financial Statements: Preparing the Excel Files

1. Enter WVEIS balance sheet amounts for each fund into the yellow highlighted cells within the “Gov Funds – Bal Sheet” worksheet.
 - Source: WVEIS Balance Sheet report for each fund maintained by the board.
 - Ensure each category total (i.e., total assets, total liabilities) agrees between the template and the WVEIS report.
 - The only individual balance sheet account that you WILL NOT enter on the worksheet is the unassigned fund balance, which is a calculated field.
 - Also note that you WILL NOT manually enter adjustments within the reconciliation section at the bottom of the balance sheet.
 - Reconciling adjustments will build from the conversion entries “JE” tab and various note disclosure tabs.
 - Reconciliation WILL NOT work until ALL conversion entries and note disclosure tabs are completed.



49

Financial Statements: Preparing the Excel Files

2. Enter WVEIS revenue amounts for each fund into the yellow highlighted cells within the “Gov Funds – Rev-Exp” worksheet.
 - Source: WVEIS revenue by source report for each fund maintained by the board.
 - Enter other financing sources in the appropriate section (revenues entered as negatives).
 - Proceeds from bond issuance
 - Proceeds from sale of property
 - Transfers in
 - WVEIS report total should agree to template revenues plus credits to other financing sources.



50

Financial Statements: Preparing the Excel Files

3. Enter WVEIS expenditure amounts for each fund into the yellow highlighted cells within the “Gov Funds – Rev-Exp” worksheet.
 - Source: WVEIS expenditure by function report for each fund maintained by the board.
 - Enter transfers out under the other financing sources section (enter as positive numbers).
 - WVEIS report total should agree to template expenditures plus debits (positive amounts) in the other financing sources section.
4. Enter beginning fund balances within the “Gov Funds – Rev-Exp” worksheet.
 - Source: Prior year audited financial statements.
5. Enter adjustments to beginning fund balances for prior period adjustments, if any.



Financial Statements: Preparing the Excel Files

6. Verify that fund level statements are now in balance.
 - Ensure that the check figure in the right-hand margin of the “Gov Funds – Bal Sheet” tab equals zero (Watch Window).
 - This check figure WILL NOT equal zero until all balance sheet, revenue, expenditure, other financing sources, and beginning fund balances have all been entered.
 - **DO NOT move on to the next step until the fund statements are in balance.**
7. Complete the “Fiduciary Funds Net Position” and “Changes in Fiduciary Net Position” tabs.
 - Source: Sum of MCVC, RESA, or other accounts/year-end account balances.
 - Ensure statement balances (Watch Window).



Financial Statements: Preparing the Excel Files

8. Complete the “Changes in School Funds” tab in the OSI section of the template.
 - Sources:
 - Beginning cash balances should come from the ending balances from the prior year audit.
 - Revenues and expenditures will come from year-end schools’ financial reports (from TRA SFO for most counties).
9. Complete yellow highlighted cells within the “Capital Assets” note disclosure tab.
 - Sources:
 - Beginning balances should be entered directly from the prior year ending audit balances.
 - Additions are typically entered from invoices accumulated throughout the year.
 - Deletions are typically entered from sales/receipt records or disposal reports.
 - Reconcile schedule to WVEIS capital outlay account balances and WVEIS capital asset module reports.



53

Financial Statements: Preparing the Excel Files

10. Enter depreciation expense by function into the “Notes - Cap Assets & Dep.” tab.
 - Source: WVEIS capital asset module depreciation report.
11. Complete “long term debt” tab.
 - Sources:
 - Compensated absences report
 - Lease statements from financing companies
 - Municipal Bond Commission reports
 - Beginning balances should always be entered from the prior year audited financial statements.
 - Future debt service balances should be given for each of the next 5 years with all remaining years aggregated in 5-year increments (GASB 38).



54

Financial Statements: Preparing the Excel Files

12. Complete “Notes – Fund Balance” tab.

- Sources: WVEIS
- TBD – DO NOT leave “TBD” as a category of committed and/or assigned fund balance
 - If the Board did not take action to restrict funds for a specific purpose by June 30th, then the funds are either assigned or unassigned.
 - If management did not make the decision to assign balances for a specific purpose by the time the financials are being prepared, then the funds are unassigned.



55

Financial Statements: Preparing the Excel Files

13. Complete yellow highlighted sections of each budgetary comparison schedule.

- Sources:
 - Proposed budget reports
 - Revenues – Budget by revenue source
 - Expenditures – Budget by function
 - Final budget reports
 - Revenues – Budget by revenue source
 - Expenditures – Budget by function
- The budgetary comparison schedules must show the original budget, the final budget, actual results, and a variance column that compares actual results of operations for the year to the final budget.
- Adjustments column included to account for regulatory basis adjustments.



56

Financial Statements: Preparing the Excel Files

14. Budget Schedules (Continued)

- Please note that county boards of education are instructed to include in their budgets expenditures related to the unfunded retirement liability allocation (object 235), so adjustment should be unnecessary.



57

Financial Statements: Preparing the Excel Files

15. Complete the “Excess Levy Rev & Exp” tab.

- Source – WVEIS project reports (if excess levy is tracked in a local project), or WVEIS fund 12 reports.
- Should include a category for each line item on the levy call.
- New rows should be inserted if necessary (will need to unprotect the worksheet).

16. Complete the revenue allocation on the “Rev Alloc” tab.

- Source: WVEIS revenue by project report aggregated for ALL funds.
- Key in the project codes, project descriptions, and amounts within columns A, B, and C, respectively.
- Enter “class codes” into column E (see class code key at the bottom of the worksheet).
- Only use “revenue classification” codes in column E.



58

Financial Statements: Preparing the Excel Files

16. Revenue Allocation (Continued)

- Ensure the check figure at the bottom of column C equals zero (Watch Window).
- Key in functional allocation codes for:
 - Charges for Services
 - Operating Grants & Contributions
 - Capital Grants & Contributions
- If functional allocation codes are not entered into columns Y, AC, and AG, the template will allocate the revenues automatically on the “rev check” tab.
- Please be consistent with how the functional allocation codes are handled (if you used functional allocation codes on the “Rev Alloc” tab last year, continue to use them this year and going forward).
- Review check figures at the bottom of columns AY, BO, and CE to ensure they are zero (Watch Window).
 - If not zero, likely an issue with broken formulas or linked cells.



Financial Statements: Preparing the Excel Files

17. Review “Rev Check” tab to ensure all revenue has been appropriately allocated for district-wide presentation.

- Check figure at the bottom of column Q must equal zero (Watch Window).
- Note that the revenue allocation does not use expenditures from food service, community service, interest, or unallocated depreciation expenses for the basis of calculating the allocation percentages in column C of the “rev check” (that is why the allocation percentages for those categories are hard-keyed as zeros).



Financial Statements: Preparing the Excel Files

18. Conversion entries:

- Needed because the ***district-wide statements*** are prepared using the economic resources measurement focus and the full accrual basis of accounting.
 - Revenues are recorded when earned.
 - Expenses are recorded at the time liabilities are incurred, regardless of when the related cash flows are received.
 - Revenues and expenses resulting from exchange and exchange-like transactions are recognized when the exchange takes place.
 - Revenues and expenses resulting from non-exchange transactions, such as property taxes, federal and state grants, state aid to schools, and donations, are recognized in accordance with the requirements of GASB Statement 33.
 - Property taxes are recognized in the fiscal year for which the taxes are levied.
 - State aid to schools is recognized in the year for which the legislative appropriation is made.
 - Grants and donations are recognized in the fiscal year in which all eligibility requirements have been satisfied.



Financial Statements: Preparing the Excel Files

18. Conversion entries (continued):

- Complete yellow highlighted cells within the “JEs” tab.
 - Total debits and credits should equal.
 - No negative amounts should be entered.
 - **Any manual changes completed within the “JEs” tab must be manually linked to the trial balance tab.**
 - Cells that are not highlighted in yellow are linked from various other tabs within the template.
- JE#s U1 through U5 are created by completing the GASB 68 template. The current entries in the main financial statement Excel template are linked directly to the same entries within the GASB 68 template.
- JE#s U8 through U11 are created by completing the GASB 75 template. The current entries in the main financial statement Excel template are linked directly to the same entries within the GASB 75 template.



Financial Statements: GASB 68 Template

- If you are an LEA that does not act as a fiscal agent, you can ignore the light purple tabs in the GASB 68 template.
 - **DO NOT delete or alter the light purple tabs**
 - The light purple tabs must remain in the file to allow the template's links to work properly.
- The GASB 68 template incorporates the fiscal agent breakdown at the front end as it did last year.
 - This allows the template to accommodate GASB 68 conversions for all counties including fiscal agent counties.
- LEAs acting as a fiscal agent should complete the GASB 68 template and provide an electronic copy to the MCVF for inclusion in their own financial statement conversion.
- Users of the GASB 68 template **MUST** ensure they have the correct entity code selected in the dropdown menu in the right-hand margin of the respective "GASB 68 JEs" tab. The entity code drives numerous outputs within the GASB 68 templates.



63

Financial Statements: GASB 68 Template

19. Fill in yellow highlighted cells of the "GASB 68 Sch Input CY" tab.
 - Source – GASB 68 audited schedules for the current measurement period
 - The input tab is meant to mirror the format of the TRS audited GASB 68 Schedules.
 - **Current year GASB 68 schedules show the deferred inflows as negative numbers**
 - **Please continue to enter these as positive numbers in the template**
 - **TRS Plan totals MUST BE ENTERED MANUALLY.** This is because our template does not include rows for all employers within the plan. The plan totals are needed for key calculations throughout the GASB 68 template.
 - **These amounts will be entered for you for the current year.**
 - **Enter GASB 68 contribution information from the column titled "Employer Contributions".**
 - **When keying percentages, make sure you key in two leading zeros after the decimal. Compare the keyed percentage to the audited GASB 68 schedule for accuracy.**



64

Financial Statements: GASB 68 Template

20. Fill in yellow highlighted cells of the “GASB 68 Sch Input PY” tab.
- Source – GASB 68 audited schedules for the prior measurement period.
 - The input tab is meant to mirror the format of the TRS audited GASB 68 Schedules.
 - **TRS Plan totals MUST BE ENTERED MANUALLY.**
 - **These amounts will be entered for you for the current year.**
 - **Enter GASB 68 contribution information from the column titled “Employer Contributions” only.**
 - **When keying percentages, make sure you key in two leading zeros after the decimal. Compare the keyed percentage to the audited GASB 68 schedule for accuracy.**



65

Financial Statements: GASB 68 Template

21. Fill in yellow highlighted cells of the “Amortization Input CY” tab
- Source – Amortization note disclosure contained in the GASB 68 audited schedules for the current measurement period.
 - Enter only the total, by year, of the future amortization of deferred amounts from the notes. To do this, you will have to add future amortization amounts, by year, for each individual category of deferred amount reported in the note.
 - Pay special attention to the fiscal years in which the amounts will be recognized as well as the sign on the amount (debits are positive amounts and credits are negative amounts...they should always be netted for this note.)
 - **Important: Amounts in the GASB 68 Schedule’s amortization note disclosure are reported in thousands. Therefore, you MUST add three zeros to the end of the totals when keying them into the GASB 68 financial statement template.**
 - **These amounts will be entered for you for the current year.**



66

Financial Statements: GASB 68 Template

22. Fill in yellow highlighted cells of the “Ret Contr Input” tab (must be done for LEAs as well as MCVCs in the case of fiscal agents).
- Sources:
 - WVEIS expenditure by function report for objects 231 and 233 for FY25 and FY24 (may copy FY24 amounts from prior year template as well)
 - WVEIS expenditure by function report for object 235 for FY25
 - WVEIS revenue by source for codes 03911 and 03917 for FY25
 - Ensure that totals on the WVEIS reports agree to totals in the “totals for conversion entries” section at the bottom of the worksheet.
 - The amount used for revenue source 03911 should only include amounts of the State Aid current subsidy that was allocated to the TRS plan. That amount can be determined by reducing the total of revenue source 03911 by any amounts allocated to the TDC plan.



67

Financial Statements: GASB 68 Template

23. Complete the “MCVC Proportion” tabs:
- If you ARE a fiscal agent county for a MCVC, you will need to key the total TRS contributions for FY23 and FY24 into the “MCVC Proportion” tab.
 - The contribution amounts to be entered for each year should be the total of objects 231 and 233 expenditures less the State Aid current retirement (subsidy) allocated to the TRS plan (revenue source 03911 less any amounts allocated to the TDC plan, if any).



68

Financial Statements: GASB 68 Template

24. Complete the “Summary of GASB 68 Activity” tab:

- In the yellow highlighted cells, enter the GASB 68 beginning balances for Net Pension Liability and Deferred Outflows/Inflows of Resources Related to Pensions as reported as ending balances in your FY24 audit.
 - NPL balance will come from the face of the District-Wide Statement of Net Position.
 - The deferred outflows/inflows of resources related to pensions will also come from the face of the District-Wide Statement of Net Position.
- Amounts should all be entered as **POSITIVES**.



69

Financial Statements: GASB 68 Template

25. Complete the “Change in Proportion” tabs for LEAs and/or MCVCs.

- “The Change in Proportion – LEA” tab
 - Fiscal agents of former RESAs will need to enter the proportionate share percentage of the RESA for 2015-2017 in the “RESA” row of orange highlighted cells and the proportionate share percentage of the LEA for 2015-2017 in the “LEA” row of orange highlighted cells
 - LEA’s who are not fiscal agents of former RESAs will just need to enter the proportionate share percentage for 2015-2022 in the “LEA” row of yellow highlighted cells
- If applicable, key the MCVC “net proportionate share” percentage in the yellow highlighted cells on the “Change in Proportion – MCVCs” tab.
- Source – applicable “Change in Proportion” tab from the prior year template.
- May use other yellow cells on these tabs for correcting rounding issues that arise on the “Net LEA Amounts” tab.



70

Financial Statements: GASB 68 Template

26. Review the “Net LEA Amounts” tab to ensure it is in balance.
 - Ensure the check totals in row 34 are clearly immaterial rounding differences (Watch Window).
 - If row 34 contains differences that are not clearly immaterial, then you will need to go back and check the amounts you entered into the previous steps related to the GASB 68 template.
 - Most issues arise from incorrectly entered data on one or more of the “Changes in Proportion” tabs.
 - This tab should automatically net the deferred amounts for differences between projected and actual investment earnings so that only a net deferred outflow or deferred inflow is reported, not both.



71

Financial Statements: GASB 68 Template

27. Review the “GASB 68 State Aid Support” tab to ensure no calculation errors are present (i.e. look for “#N/A”)
 - This tab requires no input and is calculated entirely from input from other tabs.
 - Used for:
 - JE# U5
 - Note Disclosures
28. Review the “GASB 68 JEs” tab for errors (you can monitor check figures throughout the process by reviewing the Watch Window in the file).
29. Complete the reconciliation of net position entry for JE# U1 in the margin of the “GASB 68 JEs” tab. Amounts all come from prior year JEs U1, U2, and U4. Pay attention to debits (positive numbers) and credits (negative numbers) when entering amounts.



72

Financial Statements: GASB 75 Template

- If you are an LEA that does not act as a fiscal agent, you can ignore the light purple tabs in the GASB 75 template.
 - **DO NOT delete or alter the light purple tabs**
 - The light purple tabs must remain in the file to allow the template's links to work properly.
- The GASB 75 template incorporates the fiscal agent breakdown at the front end as it did last year.
- This allows the template to accommodate GASB 75 conversions for all counties.
- LEAs acting as a fiscal agent should complete the GASB 75 template and provide an electronic copy to the MCVF for inclusion in their own financial statement conversion.
- Users of the GASB 75 template MUST ensure they have the correct entity code selected in the dropdown menu in the right-hand margin of the respective "GASB 75 JEs" tab. The entity code drives numerous outputs within the GASB 75 templates.



73

Financial Statements: GASB 75 Template

30. Fill in yellow highlighted cells of the "GASB 75 Sch Input CY" tab.
- Source – GASB 75 audited schedules for the current measurement period
 - The input tab is meant to mirror the format of the RHBT audited GASB 75 Schedules.
 - **The current year schedules present the Net OPEB Liability and the deferred inflows as negative numbers.**
 - **Please continue to enter these as positive numbers in the template**
 - **RHBT Plan totals MUST BE ENTERED MANUALLY.** This is because our template does not include rows for all employers within the plan. The plan totals are needed for key calculations throughout the GASB 75 template.
 - **These amounts will be entered for you for the current year.**
 - **Enter GASB 75 contribution information from the column titled "Employer Contributions".**
 - **When keying percentages, make sure you key in two leading zeros after the decimal. Compare the keyed percentage to the audited GASB 75 schedule for accuracy.**



74

Financial Statements: GASB 75 Template

31. Fill in yellow highlighted cells of the “GASB 75 Sch Input PY” tab.
- Source – GASB 75 audited schedules for the prior measurement period.
 - The input tab is meant to mirror the format of the RHBT audited GASB 75 Schedules.
 - **RHBT Plan totals MUST BE ENTERED MANUALLY.**
 - **These amounts will be entered for you for the current year.**
 - **Enter GASB 75 contribution information from the column titled “Employer Contributions”.**
 - **When keying percentages, make sure you key in two leading zeros after the decimal. Compare the keyed percentage to the audited GASB 68 schedule for accuracy.**



75

Financial Statements: GASB 75 Template

32. Fill in yellow highlighted cells of the “Amortization Input CY” tab
- Source – “Deferred outflows and deferred inflows of resources by source for the OPEB Plan as a whole” note disclosure contained in the GASB 75 audited schedules for the current measurement period
 - Enter only the total, by year, of the future amortization of deferred amounts from the notes.
 - Pay special attention to the fiscal years in which the amounts will be recognized as well as the sign on the amount (debits are positive amounts and credits are negative amounts...they should always be netted for this note.)
 - **These amounts will be entered for you for the current year.**



76

Financial Statements: GASB 75 Template

33. Fill in yellow highlighted cells of the “OPEB Contr Input” tab (must be done for LEAs as well as MCVCs in the case of fiscal agents).

- Sources:
 - WVEIS expenditure by function report for objects 215 and 218 for FY25 and FY24
 - WVEIS revenue by source for codes 03915 for FY25 and FY24
- Ensure that totals on the WVEIS reports agree to totals in the “totals for conversion entries” section at the bottom of the worksheet.



77

Financial Statements: GASB 75 Template

34. If applicable, complete the “OPEB Contr Input – MCVC” and “MCVC Proportion” tabs:

- If you ARE a fiscal agent county for a MCVC, you will need to key the total OPEB contributions for FY23 into the “MCVC Proportion” tab.



78

Financial Statements: GASB 75 Template

35. Complete the “Summary of GASB 75 Activity” tab:

- In the yellow highlighted cells, enter the GASB 75 beginning balances for the Proportionate Share of Net OPEB Liability and Deferred Outflows/Inflows of Resources Related to OPEB as reported as ending balances in your FY24 audit.
 - The proportionate share of net OPEB liability and the deferred outflows/inflows of resources related to OPEB will come from the DW Statement of Net Position of your FY24 audit.
- Amounts should all be entered as POSITIVES.



79

Financial Statements: GASB 75 Template

36. Complete the “Change in Proportion” tabs for LEAs and/or MCVCs:

- “The Change in Proportion – LEA” tab
 - Fiscal agents of former RESAs will need to enter the proportionate share percentage of the RESA for 2016-2017 in the “RESA” row of yellow highlighted cells and the proportionate share percentage of the LEA for 2016-2017 in the “LEA” row of yellow highlighted cells
 - LEA's who are not fiscal agents of former RESAs will just need to enter the proportionate share percentage for 2016-2017 in the “LEA” row of yellow highlighted cells
- Key the MCVC “net proportionate share” percentage in the yellow highlighted cells.
- In the current year template, all prior year amounts have been entered for Plan level data. Therefore, you should only have to enter your LEA/MCVC proportionate share percentage for the 2016 - 2022 measurement periods. Current and prior measurement period data is linked from other input fields within the template as well.
- Source – applicable “Change in Proportion” tab from the prior year financial statement template.
- May use other yellow cells on these tabs for correcting rounding issues that arise on the “Net LEA Amounts” tab.



80

Financial Statements: GASB 75 Template

37. Review the “Net LEA Amounts” tab to ensure it is in balance.
- Ensure the check totals in row 40 are clearly immaterial rounding differences (Watch Window).
 - If row 40 contains differences that are not clearly immaterial, then you will need to go back and check the amounts you previously entered into the previous steps related to the GASB 75 template.
 - Most issues arise from incorrectly entered data on one or more of the “Changes in Proportion” tabs.
 - This tab should automatically net the deferred amounts for differences between projected and actual investment earnings so that only a net deferred outflow or deferred inflow is reported, not both.



81

Financial Statements: GASB 75 Template

38. Review the “GASB 75 State Aid Support” tab to ensure no calculation errors are present (i.e., look for “#N/A”)
- This tab requires no input and is calculated entirely from input from other tabs.
 - Used for:
 - JE# U11
 - Note Disclosures
39. Review the “GASB 75 JEs” tab for errors (you can monitor check figures throughout the process by reviewing the Watch Window in the file.)



82

Financial Statements: Completing the Excel Files

40. Review check totals on the "TrialBal" tab

- Journal entry check at bottom of tab ensures that debits and credits posted to the conversion entries section of the trial balance are in balance.
 - Uses "SUMIF" formula to total debits and credits for each entry using the journal entry numbers entered into column G of the trial balance.
 - Amounts listed in the "out of balance" column could be due to 2 issues:
 - Incorrect JE numbers entered into column G of the trial balance.
 - Amount posted to the conversion entries section of the trial balance are linked incorrectly from the "JEs" tab or are incomplete.
- Other check totals (Watch Window).



83

Financial Statements: Completing the Excel Files

41. Enter beginning net position in yellow cell on the "DW St of Activities" tab:

- Source: Prior year audited financial statements

42. Review remaining check totals (Watch Window):

- District-wide Statement of Activities
 - Balancing of ending net position
 - Net position check
- District-wide Statement of Net Position
 - Balancing of ending net position

43. Enter prior year ending balances in the 4 MD&A tabs from the prior year audit report

- MD&A DW-Net Position
- MD&A DW-Act
- MD&A Cap Assets
- MD&A ROU Assets
- MD&A Gen Obligation



84

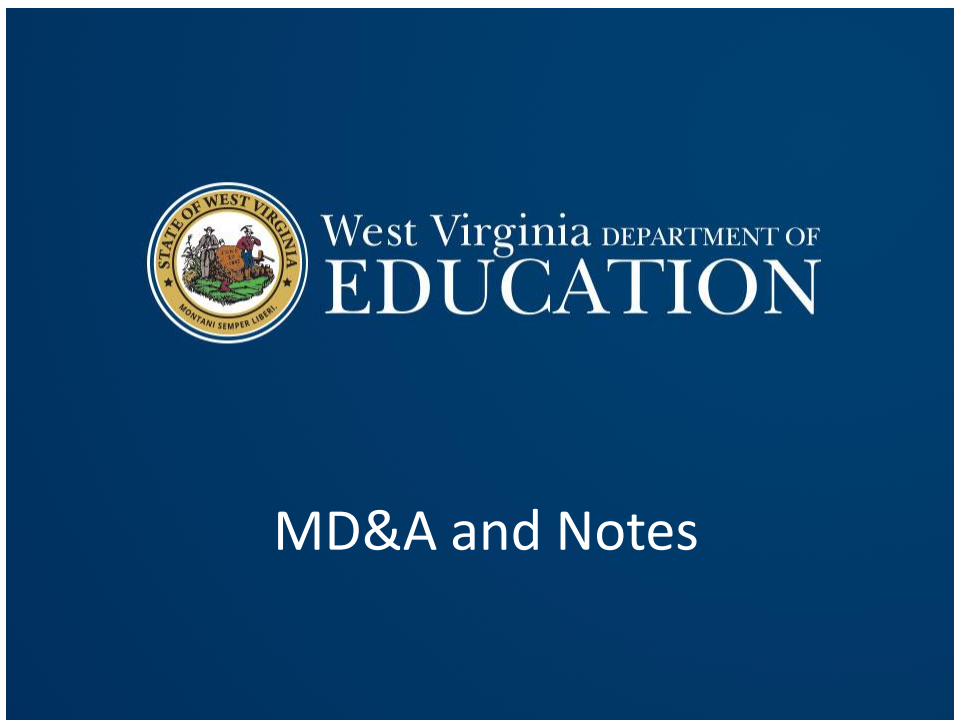
Financial Statements: Completing the Excel Files

44. Complete Encumbrance Distribution tab:

- Needed in order to see appropriate allocation of encumbrances across all fund balance categories.



85



86

Financial Statements: MD&A Template

- In order to preserve the links between the Word and Excel files, they must have been each downloaded into the same file folder on your network or local drive.
- Only 4 tables within the Excel file link directly to the MD&A.
- Read through each page of the MD&A, providing information for all blanks and items in red font.
- Pie charts:
 - Please review the pie charts in the Word file against the charts in the Excel file prior to submitting the financial statements to OSF.



87

Financial Statements: MD&A Template

- The purpose of the MD&A is to furnish an *objective* and easily readable *analysis* of the county's financial activities.
- It should contain:
 - A discussion of the basic financial statements.
 - Condensed comparative data.
 - An analysis of the government's overall financial position and results of operations.
 - An analysis of the balances and transactions of individual funds.
 - An analysis of budgetary variations.
 - A description of capital assets and long-term debt activity.
 - A discussion of infrastructure (n/a for the school boards).
 - A discussion of currently known facts, decisions, or conditions of future significance.



88

Financial Statements: Note Disclosures

- Changes made from the final FY24 template have been highlighted in yellow.
- Some of the amounts reported in the Notes template are using FY24 data because FY25 data remains unavailable at this time.
 - MBC and BTI amounts in Note 1
 - TDC section of retirement note
- If the underlying entities' financial statements have been issued prior to the issuance of the district's financials, these amounts should be updated to FY25 amounts.
- Exception: TRS section of the retirement note and the OPEB note (should continue to report FY24 amounts since the GASB 68 and GASB 75 entries use a measurement date of June 30, 2024.)



Financial Statements: Note Disclosures

- Note 1.E. – Cash & Investments
 - Table is not linked to an underlying Excel template file (key directly into Word table).
 - Delete sections dealing with MBC and BTI if the district does not have balances held by those entities.
- Note 1.F. – Fill in total allowance for uncollectible food service accounts, if applicable.
- Note 1.L. – Deferred Outflows
 - If amounts are reported in the aggregate on the face of the financial statements, you must detail out the individual balances making up the total.
 - Most counties report in the aggregate.
 - If not, delete the discussion regarding aggregated amounts.



Financial Statements: Note Disclosures

- **Note 1.P. – Deferred Inflows**
 - If amounts are reported in the aggregate on the face of the financial statements, you must detail out the individual balances making up the total.
 - Most counties report in the aggregate.
 - If not, delete the discussion regarding aggregated amounts.
- **Note 1.V. – Newly Adopted GASB Statements**
 - Has been updated to discuss GASB Statements that are required to be implemented for FY25.
 - OSF has completed the conclusion on each GASB Statement with the relevant assumptions as to applicability.
 - Please read each GASB Statement within the section and make sure the conclusions are accurate based on the specific situation in your county.



91

Financial Statements: Note Disclosures

- **Note 6 – Tax Abatements:**
 - Counties will need to determine whether they have a tax abatement situation and report all pertinent details of the abatement agreement within this disclosure.
- **Note 7 – Capital Assets**
 - Links directly with Excel Template.
 - Multiple functionality with such linking.
- **Note 8 – Long-Term Debt**
 - First table links to Excel file, others do not.
 - Future debt service amounts should be entered from the data in the “long term debt” tab of the Excel template (not linked).
 - Bond issuance information must be entered (Municipal Bond Commission), if applicable.
 - Defeasance of Debt, if applicable.



92

Financial Statements: Note Disclosures

- Note 9 – Leases that Transfer Ownership, Short-Term Leases, and ROU Assets
 - Much of the ROU Asset section is linked to the financial statement template
- Note 10 – Employee Retirement System
 - Much of the TRS section is linked to the GASB 68 template.
 - There is a section on the GASB 68 JE's tab on the GASB 68 template that makes it easier to identify certain required portions that are not linked to the GASB 68 template.
 - Plan level TDC information is not available for FY25 but should be updated to FY25 if it becomes available prior to the issuance of the county's audit.



93

Financial Statements: Note Disclosures

- Note 11 – OPEB
 - Much of the OPEB section is linked to the GASB 75 template.
 - There is a section on the GASB 75 JE's tab on the GASB 75 template that makes it easier to identify certain required portions that are not linked to the GASB 75 template.
 - Disclosures are very similar to the GASB 68 disclosures.
- Note 14 – Fund Balances
 - Pulls directly from Excel template.
 - Again, do not include "TBD" as a category.
- Note 15 – Commitments, Contingencies, and Subsequent Events
 - Include encumbrances in total, and by fund.
 - Medicaid paragraph of the note has been updated to report the latest information regarding the cost settlement process.



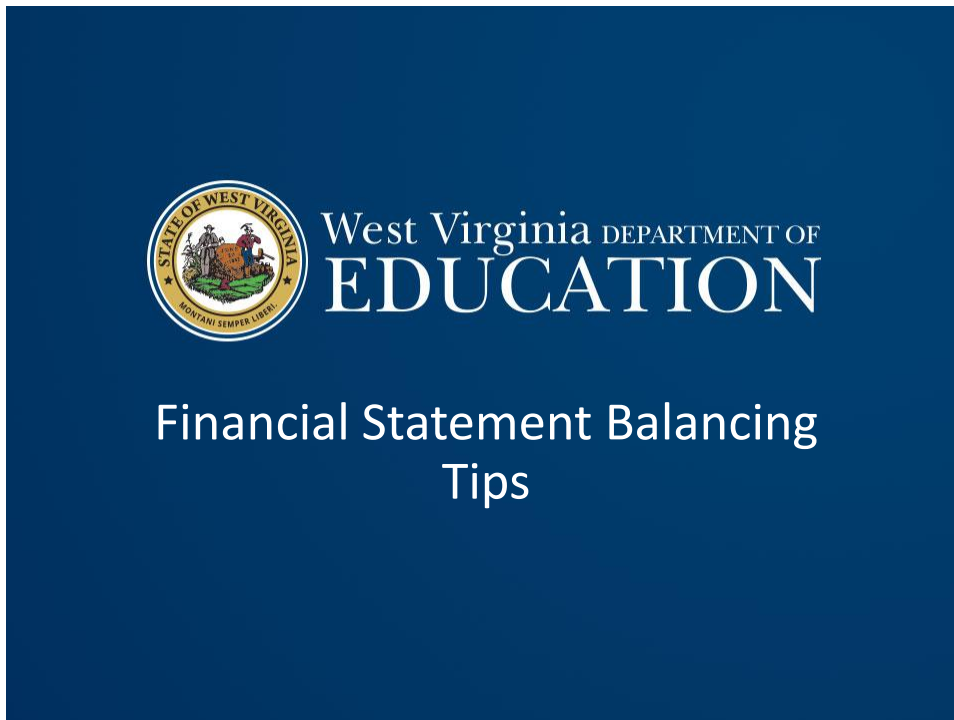
94

Financial Statements: Note Disclosures

- Notes to RSI & OSI:
 - Update to include budgetary deficits (expenditures exceeding budget) for each fund, by function.
 - Actuarial revisions for TRS and RHBT (RSI only) have been updated with the GASB 68 and 75 audited schedules.
 - A table showing the changes in actuarial assumptions, changes in benefit terms, and changes in size or composition of the population covered by the benefit terms for the years that are available for the 2 OSI schedules required by GASB 68 and GASB 75.



95



96

Financial Statements: Steps to Take When You Don't Balance

- The key lies in the "TrialBal" tab.
 - First Step: check the "total" row of the "Debit" and "Credit" columns for the Fund Basis Statements.
 - This section is populated based off the information you have manually entered into the yellow highlighted cells throughout the template.
 - If these two columns do not equal, you have entered an incorrect amount from WVEIS.
 - Compare these amounts to what you have recorded in WVEIS and make any necessary adjustments to ensure you balance.
 - This must be done before moving to the next step.



97

Financial Statements: Steps to Take When You Don't Balance

- Second Step: check the "total" row of the "Debit" and "Credit" columns for the Conversion Entries to make sure they agree.
 - You can also use the "Out of Balance" column on the "Journal Entry Check" table at the bottom of the sheet.
 - This table links to the journal entries above and totals both sides of the entry using the designations in column G (A, B, C, D, U1, etc...).
- You must balance here before moving to the next step.



98

Financial Statements: Steps to Take When You Don't Balance

- Third Step: Make sure that you have posted all the necessary conversion entries.
 - One way to do this is to look at PY entries and make sure that you are posting all the necessary CY entries. It is easy to forget all the entries that need posted.
 - Several of the issues I found in last year's financial statements were that not all of the conversion entries were being posted.



99

Financial Statements: Steps to Take When You Don't Balance

- Fourth Step: Check all manually keyed beginning balances.
 - Make sure the beginning balances on all the tabs below agree to PY audited financial statements.
 - "DW St of Activities" tab
 - "Gov Funds – Rev – Exp" tab
 - "Capital Assets" tab
 - "ROU Assets" tab
 - "Long term debt" tab



100

Financial Statements: Steps to Take When You Don't Balance

- Fifth Step: The Entity-Wide DR and CR amounts should now agree, but if they do not, please check to make sure formulas have not been erased in either column.
 - Formulas for these amounts simply add up the WVEIS balances and the Conversion entry balances.
- Once you have made sure all amounts are included and that all three steps balance, your financial statements should balance.
- If they do not balance, it is because the amounts are not being properly carried over from the trial balance tab to the face of the financial statements.



101

Financial Statements: Steps to Take When You Don't Balance

- Sixth Step: Trace the information in the "TrialBal" tab to the rest of the financial statement template to make sure the information is flowing through to the face of the Financial Statements.
 - Fund basis amounts should be traced to the Fund Basis Financial Statements.
 - Conversion Entry amounts should be traced to the "JEs" tab.
 - Entity-Wide amounts should be traced to the Government-Wide Financial Statements.
- If you still don't balance, I am happy to help.



102

Financial Statements: Key Points in Summary

- Year-end closing entries completed during July and August.
- Report an appropriate amount in “nonspendable” fund balance (should be at least your balance of prepaid expenditures and TDC forfeitures).
- Financial statement templates will be released upon final update of each template.
- USE THE WATCH WINDOW.
- “TBD” is not an appropriate type of fund balance.
- Financial statements submission due dates:
 - LEAs – September 29, 2025
 - MCVs – September 16, 2025



103

Questions, comments, or template problems?

Josh Harner, CPA
 WVDE Office of School Finance
 Phone: (304) 558-6300
 Fax: (304) 558-8867
 E-Mail: Joshua.harner@k12.wv.us



104