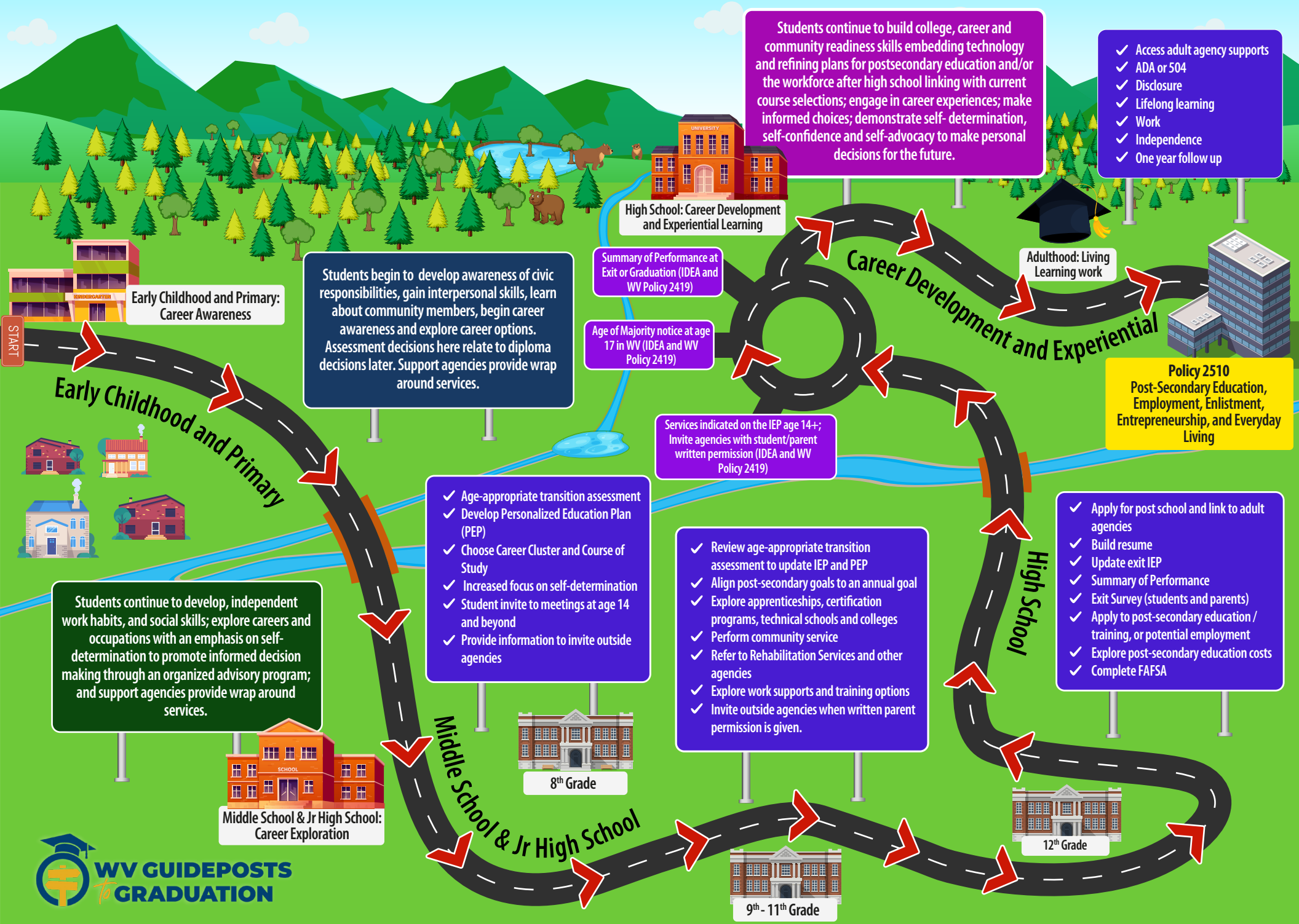


# West Virginia Roadmap to Secondary Transition



START

## Early Childhood and Primary

**Early Childhood and Primary: Career Awareness**

Students begin to develop awareness of civic responsibilities, gain interpersonal skills, learn about community members, begin career awareness and explore career options. Assessment decisions here relate to diploma decisions later. Support agencies provide wrap around services.

Students continue to develop, independent work habits, and social skills; explore careers and occupations with an emphasis on self-determination to promote informed decision making through an organized advisory program; and support agencies provide wrap around services.

**Middle School & Jr High School: Career Exploration**

## Middle School & Jr High School

- ✓ Age-appropriate transition assessment
- ✓ Develop Personalized Education Plan (PEP)
- ✓ Choose Career Cluster and Course of Study
- ✓ Increased focus on self-determination
- ✓ Student invite to meetings at age 14 and beyond
- ✓ Provide information to invite outside agencies



- ✓ Review age-appropriate transition assessment to update IEP and PEP
- ✓ Align post-secondary goals to an annual goal
- ✓ Explore apprenticeships, certification programs, technical schools and colleges
- ✓ Perform community service
- ✓ Refer to Rehabilitation Services and other agencies
- ✓ Explore work supports and training options
- ✓ Invite outside agencies when written parent permission is given.



**High School: Career Development and Experiential Learning**

Summary of Performance at Exit or Graduation (IDEA and WV Policy 2419)

Age of Majority notice at age 17 in WV (IDEA and WV Policy 2419)

Services indicated on the IEP age 14+; Invite agencies with student/parent written permission (IDEA and WV Policy 2419)

Students continue to build college, career and community readiness skills embedding technology and refining plans for postsecondary education and/or the workforce after high school linking with current course selections; engage in career experiences; make informed choices; demonstrate self-determination, self-confidence and self-advocacy to make personal decisions for the future.

## Career Development and Experiential

**Adulthood: Living Learning work**

- ✓ Access adult agency supports
- ✓ ADA or 504
- ✓ Disclosure
- ✓ Lifelong learning
- ✓ Work
- ✓ Independence
- ✓ One year follow up

**Policy 2510 Post-Secondary Education, Employment, Enlistment, Entrepreneurship, and Everyday Living**

- ✓ Apply for post school and link to adult agencies
- ✓ Build resume
- ✓ Update exit IEP
- ✓ Summary of Performance
- ✓ Exit Survey (students and parents)
- ✓ Apply to post-secondary education / training, or potential employment
- ✓ Explore post-secondary education costs
- ✓ Complete FAFSA

## High School

