

Executive Summary

West Virginia Department of Education Office of School Operations & Finance – School Facilities

Introduction: The Kanawha County Board of Education respectfully requests approval for the closure of McKinley Middle School and its merger into Hayes Middle School. This closure is not contingent upon any other actions and is proposed to occur at the end of the 2024-2025 school year.

Changes: The Kanawha County Board of Education requests approval of the following:

- The closure of McKinley Middle School and its merger into Hayes Middle School. This closure is not contingent upon any other actions and is proposed to occur at the end of the 2024-2025 school year. Regarding this closure, applicable West Virginia State Board of Education policies were reviewed and followed. Documents were available for public inspection for the required time, and a closure hearing was held for McKinley Middle School on October 9, 2024. A receiving hearing for Hayes Middle School was also held on October 9, 2024. The Kanawha County Board of Education voted to approve this closure and consolidation at the conclusion of the October 9, 2024, hearings.



200 Elizabeth Street, Charleston, West Virginia 25311-2119 • (304) 348-7732 • Fax: (304) 348-7735

Thomas E. Williams, Jr., Ed.D., Superintendent

October 28, 2024

Michele L. Blatt
Superintendent
West Virginia Department of Education
1900 Kanawha Boulevard East
Charleston, WV 25305

Dear Ms. Blatt,

The Kanawha County Board of Education (BOE) approved the closure of McKinley Middle School on Wednesday, October 9, 2024.

The Kanawha County BOE requests the approval of the closure and consolidation of those students into Hayes Middle School effective the fall semester of 2025.

The closure hearing for McKinley Middle School was in compliance with:

- Policy 6204 & Title 12– School Closings or Consolidations;
- Policy 6200 – Planning of School Facilities;
- Policy 2520 - Content Standards & Objectives for WV Schools;
- Policy 2510 – Assuring the Quality of Education: Regulations for Education Programs;
- and Policy 2419 – Regulations for the Education of Students with Exceptionalities.

To the best of our knowledge, we have followed all statutes, guidelines and/or recommendations. We are requesting the approval of the closure of McKinley Middle School.

Sincerely,

Thomas E. Williams, Jr., Ed.D.
Superintendent of Schools

REASONS AND SUPPORTING DATA

FOR THE

**CLOSURE OF
McKINLEY MIDDLE SCHOOL
INTO
HAYES MIDDLE SCHOOL**

KANAWHA COUNTY BOARD OF EDUCATION

Prepared Pursuant to

**W. Va. Codes §18-5-13 and §18-5-13a and
WVBE Policies 6200 and 6204.**

**Kanawha County Schools
Under the direction and authority of
The West Virginia Board of Education (WVBE)**

**Public Hearing October 9, 2024
County Board Approval October 9, 2024**

This template (revised 3/16/22) is provided by the WVDE as a technical assistance tool for county boards to use in the preparation of their supporting documents for a proposed school closure or consolidation. This template does not reduce or eliminate the requirements found in WV State Code or WVBE Policy 6204 as they relate to school closures or consolidations. This document does not replace or supplant legal assistance provided by counsel engaged to represent the county.

Table of Contents

| | |
|---|-----|
| 3.0. County Procedures | 2 |
| 3.2. Executive Summary | 3 |
| 3.2.a Enrollment | 5 |
| 3.2.b. Facilities | 8 |
| 3.2.c. Finance | 13 |
| 3.2.d. Personnel | 15 |
| 3.2.e. Transportation | 16 |
| 3.2.f. Educational Program | 19 |
| 3.2.g. Community | 19a |
| 3.3. & 3.4. Public Notices and Hearings | 20 |
| 3.6. County Board Actions | 24 |
| 3.6.a. Superintendent Verification of Board Actions | 24 |
| Appendix of Supporting Data | 25 |

3.0. County Procedures

WVDE Application for school closure and/or consolidation

Kanawha County

Closure of McKinley Middle School into Hayes Middle School

Scheduled Date of Hearing: Wednesday, October 9, 2024, at 6:00 P.M.

Scheduled Date of County Board Vote: Wednesday, October 9, 2024, following the Hearing

County Procedures

This template shall be used to accumulate and present the data that is requested in Policy 6204 and W.Va. Code 18-5-13a to support the closure or consolidation of a WV public school.

The county shall prepare written reasons and supporting data concerning proposed school closings or consolidations to be submitted to the WVBE for approval in accordance with this policy and W. Va. Code §18-5-13a. The written materials shall:

- be available for public inspection in the office of the county superintendent during the 30 days preceding the date of the public hearing; and*

Be delivered in duplicate to the:

- principal of a school that is proposed to be closed or consolidated, and of any school which the county designates to receive the students who are relocated as a result of the closure or consolidation; and*
- chair of the local school improvement council (LSIC) representing a school that is proposed to be closed or consolidated, and any school that the county designates to receive the students who are relocated as a result of the closure or consolidation.*
- A copy of the notice shall be posted at all schools, bus garages, and maintenance areas in the county in conspicuous working areas, for all professional and service personnel to observe.*

Thomas E. Williams, Jr., Ed.D.

See Appendix

Superintendent

Date:

3.2. Executive Summary and Impact Statements

County Procedures

An executive summary shall be prepared including the following items that will summarize with page references to the county's documentation, as defined in section 3.1, those items listed and shall be provided to the WVDE School Facilities Services unit.

The Kanawha County Board of Education has experienced a loss in students over the past ten years. The overall student enrollment has decreased in enrollment by -17.8%. This represents a loss of 4,499 students from 2014/15 – 2023/24. In an effort to provide an equal and quality education to each student in Kanawha County the Kanawha County Board of Education proposes to consolidate services. This would not only save the Board of Education operating expense, but it would allow the county to provide an education curriculum that they currently cannot afford to provide for all students.

The Kanawha County Board of Education proposes merging McKinley Middle School to the existing Hayes Middle School, thus closing McKinley Middle School. The Mer383ge would provide the following:

- The desire to meet the Economy of Scale guidelines of the SBA and the State Department of Education.
- Improving school transportation efficiency and complying with guidelines for length of bus rides for students to all facilities.
- Housing all students in permanently constructed facilities.
- Increasing the efficiency of operations of all facilities.

Enrollment 3.2.a.

Kanawha County has had a 16,712 decrease in population from 2014 through 2024. The student enrollment at McKinley Middle School has decreased by 80 students over the past ten years, and is projected to decrease by another 97 students over the next ten years. Hayes Middle School has decreased by 38 students over the past ten years, and is projected to decrease by another 69 students over the next ten years. The merger of these two schools would benefit both student populations by decreasing operating expenses and providing a better learning atmosphere and curriculum for students.

Facilities 3.2.b.

McKinley Middle School is 6.4 miles from Hayes Middle School. McKinley Middle School is in average condition, considering having been built in 1932, with a 57.8% building utilization rate. Hayes Middle School is in average condition, with a 56.7% building utilization rate. The existing facilities have been reviewed and evaluated during the recent CEF process. The SBA form 134 Worksheets are shown in the Appendix of Supporting Data. The Space Utilization is also listed for each facility.

Finance 3.2.c.

In an effort to provide an equal and quality education to each student in Kanawha County the board proposes to consolidate services. This closure and consolidation would save the Board of Education \$651,376.00 annually. Savings on maintenance and operating expenses on aging buildings that they currently do not have the finances to properly maintain will be realized.

3.2. Executive Summary and Impact Statements

County Procedures

Personnel 3.2.d.

The County Board of Education has attempted to reduce staff due to a loss in enrollment over the past ten years to meet the formula for professional and service personnel. This closure and consolidation would result in a reduction of 20 Professional Personnel and 8.5 Service Personnel. Kanawha County will continue to follow the WVDE recommended guidelines on the number of employees but maintain the number of staff required to deliver the education programs made available to its students. Some staff may be reduced due to the duplication of positions after merger.

Transportation 3.2.e.

There are no negative variances in any of the two bus routes from the McKinley and Hayes area. The routes will not exceed the forty-five-minute guideline as outlined in the WVDE Policy 6200; et al. Detailed information is found on page eight of this document.

Educational Program 3.2.f.

Kanawha County Schools ensures an engaging educational environment for learners (students and adults) focusing on teaching and learning in the 21st century. Our mission statement is “to provide a world-class education that ensures success for every student in the 21st century. We Believe: All students CAN achieve. Quality teaching is the key to student success.”

Expectations of parents have evolved through the years, as society has changed. Safe environment, cleanliness, fiscal responsibility, and healthy lifestyles are important issues that are conducive to learning. Parents expect their students to obtain a quality education and to be able to function successfully in life.

3.2.a Enrollment

County Procedures

Enrollment and Population Table

Trends in student population growth or decline in the county for the previous 10 years.

| Year | 2013-2014 | 2014-2015 | 2015-2016 | 2016-2017 | 2017-2018 | 2018-2019 | 2019-2020 | 2020-2021 | 2021-2022 | 2022-2023 |
|--------------|-----------|-----------|-----------|-----------|-----------|-----------|-----------|-----------|-----------|-----------|
| Total | 28,076 | 27,604 | 27,339 | 26,335 | 26,230 | 25,757 | 25,387 | 24,799 | 24,164 | 23,714 |

Enrollment Table 1

Trends in student population growth or decline in the attendance area of the school targeted for closure or consolidation for the previous 10 years.

McKinley Middle School

| Year | 2013-2014 | 2014-2015 | 2015-2016 | 2016-2017 | 2017-2018 | 2018-2019 | 2019-2020 | 2020-2021 | 2021-2022 | 2022-2023 |
|--------------|-----------|-----------|-----------|-----------|-----------|-----------|-----------|-----------|-----------|-----------|
| Total | 383 | 405 | 391 | 346 | 310 | 315 | 306 | 308 | 315 | 303 |

Enrollment Table 2

Hayes Middle School

| Year | 2013-2014 | 2014-2015 | 2015-2016 | 2016-2017 | 2017-2018 | 2018-2019 | 2019-2020 | 2020-2021 | 2021-2022 | 2022-2023 |
|--------------|-----------|-----------|-----------|-----------|-----------|-----------|-----------|-----------|-----------|-----------|
| Total | 474 | 461 | 490 | 460 | 454 | 428 | 471 | 485 | 468 | 436 |

Enrollment Table 3

Population characteristics, such as birth and death rates and age composition of population for the previous ten years, as provided by the most recent Census data for the county.

County Birth and Death Rates

| Year | 2011 | 2012 | 2013 | 2014 | 2015 | 2016 | 2017 | 2018 | 2019 | 2020 |
|------------|------|------|------|------|------|------|------|------|------|------|
| Birth Rate | 11.2 | 11.6 | 11.7 | 11.4 | 10.9 | 10.5 | 10.5 | 10.3 | 9.8 | 9.6 |
| Death Rate | 12.4 | 12.5 | 13.0 | 12.8 | 13.4 | 13.5 | 14.2 | 14.8 | 14.1 | 16.7 |

Sources for data: West Virginia Department of Health & Human Resources Bureau for Public Health Statistics Center

Enrollment Table 4

3.2.a Enrollment

County Procedures

County Population Data

| Year | Total Population | 1 to 9 | 10 to 19 | 20 to 29 | 30 to 39 | 40 to 49 | 50 to 59 | 60 to 69 | 70 to 79 | 80 and over |
|------|------------------|--------|----------|----------|----------|----------|----------|----------|----------|-------------|
| 2011 | 192,315 | 11.3% | 11.2% | 11.7% | 12.9% | 12.5% | 17.0% | 11.5% | 7.0% | 4.7% |
| 2012 | 192,179 | 11.0% | 11.7% | 11.7% | 12.4% | 12.9% | 15.9% | 12.7% | 7.2% | 4.4% |
| 2013 | 191,275 | 10.9% | 11.6% | 12.0% | 12.9% | 12.0% | 15.9% | 13.3% | 6.2% | 5.2% |
| 2014 | 190,223 | 11.6% | 10.7% | 12.1% | 12.1% | 12.8% | 15.8% | 12.6% | 8.0% | 4.4% |
| 2015 | 188,332 | 11.0% | 11.2% | 11.4% | 12.4% | 12.7% | 14.0% | 15.2% | 7.4% | 4.5% |
| 2016 | 186,241 | 11.8% | 10.2% | 12.0% | 11.7% | 12.9% | 15.3% | 13.9% | 8.5% | 4.0% |
| 2017 | 183,293 | 11.8% | 10.9% | 11.4% | 11.8% | 12.4% | 13.0% | 15.4% | 8.2% | 5.0% |
| 2018 | 180,454 | 11.2% | 10.4% | 11.9% | 11.7% | 12.3% | 14.3% | 15.2% | 8.2% | 4.9% |
| 2019 | 178,124 | 10.3% | 11.3% | 11.9% | 11.9% | 12.3% | 13.5% | 13.7% | 9.8% | 5.2% |
| 2020 | 176,253 | 10.7% | 11.1% | 11.7% | 12.1% | 12.0% | 13.3% | 13.7% | 9.6% | 5.6% |

Sources for data: West Virginia Department of Health & Human Resources Bureau for Public Health Statistics Center & United States Census Bureau

Enrollment Table 5

Projections of enrollment, by grade and school, in the affected attendance area, for the next ten years.

McKinley Middle School

| Year | 2023-2024 | 2024-2025 | 2025-2026 | 2026-2027 | 2027-2028 | 2028-2029 | 2029-2030 | 2030-2031 | 2031-2032 | 2032-2033 |
|-----------------|-----------|-----------|-----------|-----------|-----------|-----------|-----------|-----------|-----------|-----------|
| 6 th | 115 | 96 | 65 | 76 | 77 | 72 | 72 | 67 | 64 | 66 |
| 7 th | 96 | 78 | 94 | 64 | 74 | 75 | 71 | 71 | 66 | 63 |
| 8 th | 78 | 91 | 74 | 90 | 61 | 71 | 71 | 68 | 68 | 63 |
| Total | 289 | 265 | 233 | 230 | 212 | 218 | 214 | 206 | 198 | 192 |

Sources for data: West Virginia Department of Education ZOOMWV

Enrollment Table 6

Hayes Middle School

| Year | 2023-2024 | 2024-2025 | 2025-2026 | 2026-2027 | 2027-2028 | 2028-2029 | 2029-2030 | 2030-2031 | 2031-2032 | 2032-2033 |
|-----------------|-----------|-----------|-----------|-----------|-----------|-----------|-----------|-----------|-----------|-----------|
| 6 th | 127 | 157 | 126 | 141 | 140 | 128 | 133 | 126 | 122 | 126 |
| 7 th | 157 | 158 | 156 | 125 | 140 | 139 | 127 | 132 | 125 | 121 |
| 8 th | 158 | 133 | 160 | 158 | 126 | 142 | 141 | 128 | 133 | 126 |
| Total | 442 | 448 | 442 | 424 | 406 | 409 | 401 | 386 | 380 | 373 |

Sources for data: West Virginia Department of Education ZOOMWV

Enrollment Table 7

3.2.a Enrollment

County Procedures

Projection Method

Explanation of the projection method utilized addressing the relationship between the most recent Second Month Report, the Second Month Reports for the previous three years, and the most recent census data for the county.

Kanawha County Schools uses the Cohort Survival Ratio Technique for enrollment projection. The source of the enrollment data for all schools is taken from the second month report that is submitted to the West Virginia Department of Education. Enrollment data is kept in the reporting for the past ten years and it assists in making future projections. Resident live births and computation of survival ratios are factors that are also considered for enrollment projection.

3.2.b. Facilities County Procedures

Descriptive Maps

Maps showing the school(s) targeted for closure or consolidation and the school(s) that the county designates to receive the students with mileage indicated between and among schools affected. The map shall include a legend indicating the grade configuration, student enrollment, and utilization percentage for each school on the map.



Map 1

| School | Grade Config. | Current or Anticipated Enrollment | Utilization | Distance to School A | Distance to School B | Distance to New School C |
|---|---------------|-----------------------------------|-------------|----------------------|----------------------|--------------------------|
| McKinley Middle School (Closing School) | 6-8 | 289 | 57.8% | - | 6.4 Miles | - |
| Hayes Middle School (Receiving School) | 6-8 | 442 | 56.7% | 6.4 Miles | - | - |

Facilities Table 1

3.2.b. Facilities

County Procedures

Written Facility Condition Description

Written description of the physical condition of the school targeted for closure or consolidation and the school or schools which the county designates to receive the students. This description shall include age, number of buildings, general condition, adequacy of structural, electrical, and mechanical systems to provide a safe and healthful environment.

McKinley Middle School is a one- and two-story masonry wall bearing, and steel frame facility constructed in 1932. Additions were made in 1938, 1961 and 1990. The 60,834 square foot building houses classrooms, computer labs, art studio, music spaces, media center, resource spaces, physical education/gym, food service spaces with adjacent dining/commons and administrative/pupil services suite. There is one double portable classroom in use on the site. The building is in overall average condition, and the buildings infrastructure and masonry walls are in need of replacement or repair.

The facility sits on an approximate 17.9-acre site where roads are adequate and are separated from pedestrian traffic. Bus loading is adequate and is separated from vehicular traffic. Site storm drainage is adequate, as well as the on-site parking. A separate parent pickup area is not provided. The site contains paved and grassy playfields including a football field and tennis courts. The school is in a residential and light commercial neighborhood.

Hayes Middle School is a fully sprinkled one story masonry wall bearing and steel frame facility constructed in 1961 with an addition in 1991. The 79,905 square foot facility houses two separate buildings – academic and technical – connected by a covered breezeway. The academic building contains classrooms, library/media center, special education spaces and an administrative/student suite. The technical building contains technical education classrooms, art/music spaces, art studio, multi-purpose room with dining space and physical education/gym area. Both buildings are ADA compliant. The building is in overall average condition, the building's infrastructure will be in need of scheduled replacements in the near future.

The school is seated on an approximate 18.6-acre site that fronts Strawberry Road, and to the North across Coal River is Riverlake Estates. Roads are adequate and are separated from pedestrian traffic. Bus loading is adequate and is separated from vehicular traffic and the on-site parking is adequate. A separate parent pickup area is not provided. There are paved and grass playfields including football field and tennis courts. The facility does not have a safe school entrance. The neighborhood is highly residential.

3.2.b. Facilities

County Procedures

Educational Programs and Related Student Services

Evaluation of the school targeted for closure or consolidation and the school or schools that the county designates to receive the students in regard to the school(s) adaptability to the present and proposed educational programs, and the provisions of related student services.

Policy 6200 guidelines were used in the planning and implementation of the closure of McKinley Middle School. The latest Comprehensive Educational Facilities Plan will be used in planning and developing any facility improvements at Hayes Middle School, the receiving school.

Hayes Middle School has adequate space for special needs and regular education activities. Building concerns to be addressed include new windows, HVAC work and fire alarm system inspection and corrections.

Hayes Middle students, teachers, and staff use technology on a daily basis. The school serves 6th through 8th with one team per grade level. Student support programs are in place along with the appropriate support staff. Wireless internet access is available throughout the school.

School Enrollments, Capacities, and Utilizations

| <i>School</i> | <i>Enrollment</i> | <i>Building Capacity</i> | <i>Utilization %</i> |
|------------------------------------|-------------------|--------------------------|----------------------|
| McKinley Middle School | 289 | 500 | 57.8% |
| Hayes Middle School | 442 | 780 | 56.7% |
| Hayes Middle School (Consolidated) | 675 (Estimated) | 780 | 86.5% |

Facilities Table 2

Utilization Calculation Sheet

The supporting School Building Authority of West Virginia's (SBA) Worksheet on Building Program Utilization.

See Appendix for this Documentation.

3.2.b. Facilities

County Procedures

Required Services and Barrier-free Environments.

Comparison of the school(s) targeted for closure or consolidation and the school(s) which the county has designated to receive the students in regard to providing the required services and barrier-free environments to students with disabilities.

McKinley Middle School has one elevator and a lift for second floor accessibility, however three first floor classrooms are not ADA compliant.

Hayes Middle School is an ADA compliant facility.

Grade Configurations and Educational Programs

Elaboration on the effect the proposed school closing or consolidation will have on the school system's future plans regarding grade configuration, educational programs, and facility requirements.

The closure of McKinley Middle School is congruent with Kanawha County Schools 2020- 2030 CEFP Plan. The closure would allow for more efficient and increased dispersion of resources to areas of need. It would give enrollment of McKinley Middle access to more appropriate and advantageous special education programs.

Construction Work Required for the Proposed Action

Elaboration on the planned facility additions, renovations, or replacements that are required by the county to accommodate the proposed closing and consolidation.

Additions, renovations, or replacements are not required or proposed to McKinley Middle for closure.

Additions, renovations, or replacements are not required or proposed to Hayes Middle School to accommodate the McKinley Middle School enrollment. Work will soon begin to enclose the breezeway between the two buildings to ensure safe student passage.

The Future of Closed Facilities

Elaboration on the future use or disposal of facilities designated by the county for closure.

McKinley Middle School will be a permanent closure into Hayes Middle School.

3.2.b. Facilities

County Procedures

School Building Authority of WV (SBA)

Identify if the proposed school closing or consolidation is contingent upon receiving funding from the SBA.

The closure of McKinley Middle School is not contingent upon SBA funding. The current McKinley Middle School students would be absorbed into Hayes Middle School.

SBA Facility Condition Documentation

Attachment of the most recent SBA facility evaluation form for each school affected and an updated form if the most recent SBA facility evaluation form is five years old or older.

[See Appendix for this Documentation.](#)

Supporting Photographs, Floorplans, and other Documentation

Provide facility floorplans, photos, and any supporting documentation. Examples of supporting documentation includes reports from architects, engineers, Fire Marshall, and insurance companies.

[See Appendix for this Documentation.](#)

3.2.c. Finance

County Procedures

Itemization of Anticipated Cost and Savings

Itemization of the anticipated cost or savings the county will experience in all areas as a result of the proposed school closure or consolidation. Such itemization shall be in the form of a table indicating the following:

Closing School(s) Annual Current Cost

The current annual cost at the school(s) to be closed for:

McKinley Middle School

| <i>Item</i> | <i>Amount</i> |
|-----------------------|----------------|
| <i>Utilities</i> | \$121,768.45 |
| <i>Personnel</i> | \$1,920,311.28 |
| <i>Maintenance</i> | \$10,760.71 |
| <i>Transportation</i> | \$125,280.86 |
| <i>Other</i> | \$14,657.80 |
| <i>Total</i> | \$2,192,595.95 |

Finance Table 1

Receiving School(s) Annual Current Cost (If Applicable)

The current annual cost at the school(s) to be receiving for:

Hayes Middle School

| <i>Item</i> | <i>Amount</i> |
|-----------------------|----------------|
| <i>Utilities</i> | \$127,768.45 |
| <i>Personnel</i> | \$2,517,184.28 |
| <i>Maintenance</i> | \$19,426.83 |
| <i>Transportation</i> | \$284,566.53 |
| <i>Other</i> | \$24,603.15 |
| <i>Total</i> | \$2,973,549.24 |

Finance Table 2

Anticipated Annual Cost after Action

The anticipated annual cost at the school(s) to be receiving for:

Hayes Middle School

| <i>Item</i> | <i>Amount</i> |
|-----------------------|----------------|
| <i>Utilities</i> | \$211,309.36 |
| <i>Personnel</i> | \$3,148,415.59 |
| <i>Maintenance</i> | \$20,502.90 |
| <i>Transportation</i> | \$290,322.00 |
| <i>Other</i> | \$40,689.83 |
| <i>Total</i> | \$3,711,239.68 |

Finance Table 3

3.2.c. Finance

County Procedures

Net Cost or Savings

the net cost or savings of the school(s) to be closed and the school(s) designated by the county to be receiving students for:

McKinley and Hayes Middle School

| <i>Item</i> | <i>Amount</i> |
|-----------------------|----------------|
| <i>Utilities</i> | \$38,044.39 |
| <i>Personnel</i> | \$1,289,079.97 |
| <i>Maintenance</i> | \$9,648.64 |
| <i>Transportation</i> | (\$5,755.47) |
| <i>Other</i> | (\$1428.88) |
| <i>Total</i> | \$1,329,624.65 |

Finance Table 4

Anticipated Construction Cost to Accommodate Action

Cost of any renovation or addition resulting from the proposed school closure or consolidation, including all proposed funding sources.

McKinley Middle School
Hayes Middle School

No renovations and/or new additions resulting from the proposed school closure or consolidation will be needed for either school.

County Expense Fund History

Five-year history of the county's unrestricted general current expense fund balance and that balance as a percentage of the county's approved levy estimate.

| <i>Year</i> | <i>Unrestricted General Current Expense Fund Balance</i> | <i>Approved Levy Estimate</i> | <i>Percentage of Approved Levy Estimate</i> |
|-------------|--|-------------------------------|---|
| 2023 | \$49,771,324.00 | \$229,752,276.00 | 21.66% |
| 2022 | \$52,668,539.00 | \$230,870,062.00 | 22.81% |
| 2021 | \$41,235,334.00 | \$239,881,973.00 | 17.19% |
| 2020 | \$51,430,753.00 | \$237,323,995.00 | 21.67% |
| 2019 | \$29,080,399.00 | \$226,766,487.00 | 12.82% |

3.2.d. Personnel

County Procedures

Analysis of Anticipated Personnel Changes

An analysis of the effect the proposed school closure or consolidation will have on professional and service personnel. The analysis shall include, at a minimum, the following data regarding the anticipated increases or decreases in employment as a result of this proposed closure or consolidation:

| McKinley Middle School – Current School Personnel Data Chart | | | | |
|--|----------------|----------|------------|-----------|
| Professional Personnel | Administration | Teachers | Counselor | Nurse |
| <i>number professional personnel currently employed at the affected school(s);</i> | 2 | 18 | 1 | 1 |
| Service Personnel | Cooks | Aides | Custodians | Secretary |
| <i>number service personnel currently employed at the affected school(s);</i> | 3 | 0 | 3.5 | 2 |

Current Personnel

| Hayes Middle School – Current Before Proposed Action | | | | |
|--|----------------|----------|------------|-----------|
| Professional Personnel | Administration | Teachers | Counselor | Nurse |
| <i>number professional personnel currently employed at the affected school(s);</i> | 2 | 28 | 1 | 1 |
| Service Personnel | Cooks | Aides | Custodians | Secretary |
| <i>number service personnel currently employed at the affected school(s);</i> | 4 | 2 | 4 | 2 |

Current Personnel

| Current Affected School Total – Before Proposed Action | | | | |
|---|----------------|----------|------------|-----------|
| Professional Personnel | Administration | Teachers | Counselor | Nurse |
| <i>total number of professional personnel currently employed at all affected schools;</i> | 4 | 46 | 2 | 2 |
| Service Personnel | Cooks | Aides | Custodians | Secretary |
| <i>total number of service personnel currently employed at all affected schools;</i> | 7 | 2 | 7.5 | 4 |

Current Personnel

3.2.d. Personnel

County Procedures

| McKinley Middle School Total – Anticipated After Proposed Action | | | | |
|--|----------------|----------|------------|-----------|
| Professional Personnel | Administration | Teachers | Counselor | Nurse |
| <i>total number of professional personnel that are anticipated to be employed at the affected school(s) upon the completion of the closure or consolidation;</i> | -2 | -7 | -1 | -1 |
| Service Personnel | Cooks | Aides | Custodians | Secretary |
| <i>total number of service personnel that are anticipated to be employed at the affected school(s) upon the completion of the closure or consolidation;</i> | -3 | 0 | -3.5 | -2 |

Anticipated Personnel

| Hayes Middle School – Anticipated Net Change After Proposed Action | | | | |
|--|----------------|----------|------------|-----------|
| Professional Personnel | Administration | Teachers | Counselor | Nurse |
| <i>the anticipated net change in professional personnel due to the proposed closure or consolidation</i> | 2 | 39 | 1 | 1 |
| Service Personnel | Cooks | Aides | Custodians | Secretary |
| <i>the anticipated net change in service personnel due to the proposed closure or consolidation</i> | 4 | 2 | 4 | 2 |

Anticipated Personnel

| McKinley Middle School – Attrition and Reduction in Force Summary - Professional | | | | |
|--|----------------|----------|------------|-----------|
| Professional Personnel | Administration | Teachers | Counselor | Nurse |
| <i>decrease that will occur through attrition.</i> | 0 | 0 | 0 | 0 |
| <i>decrease that will occur through reduction in force.</i> | 2 | 7 | 1 | 0 |
| Service Personnel | Cooks | Aides | Custodians | Secretary |
| <i>decrease that will occur through attrition.</i> | 0 | 0 | 0 | 0 |
| <i>decrease that will occur through reduction in force.</i> | 3 | 0 | 3.5 | 2 |

3.2.e. Transportation

County Procedures

Analysis of Anticipated Transportation Time Changes

Explain any negative variances of 126CSR172, Policy 6200, Handbook on Planning School Facilities (Policy 6200), section 202.02, and the effects the variances may have on transportation. Provide the following bus route data and travel times:

Current and Difference of Travel Times

List the current travel time by bus route for students in the communities of the schools planned for closure or consolidation and the estimated increase or decrease in travel time as a result of the closure; and

McKinley Middle School

| <i>Route</i> | <i>Community</i> | <i>Current Travel Time</i> | <i>Estimated Time after Closure or Consolidation</i> | <i>Net Increase or Decrease</i> |
|--------------|------------------|----------------------------|--|---------------------------------|
| 413.106 | Green Valley | 14 Min | 27 Min | 13 Min |
| 413.003 | Jefferson | 30 Min | 43 Min | 13 Min |
| 413.102 | Downtown | 18 Min | 28 Min | 10 Min |

Transportation Table 1

Hayes Middle School

| <i>Route</i> | <i>Community</i> | <i>Current Travel Time</i> | <i>Estimated Time after Closure or Consolidation</i> | <i>Net Increase or Decrease</i> |
|--------------|------------------|----------------------------|--|---------------------------------|
| 409.101 | Strawberry Road | 45 Min | 45 Min | 0 Min |
| 409.102 | Tornado | 44 Min | 44 Min | 0 Min |
| 409.103 | Dry Ridge | 50 Min | 50 Min | 0 Min |
| 409.108 | Winfield Road | 28 Min | 28 Min | 0 Min |
| 409.110 | Amandaville | 35 Min | 35 Min | 0 Min |

Transportation Table 2

3.2.e. Transportation

County Procedures

Anticipated Routes and Waiver Requests

List all anticipated bus routes after the proposed closure or consolidation with the estimated total one-way travel time for each route. Clearly identify any bus routes that exceed the recommended travel times and any routes which will require a waiver of W. Va. 126CSR92, Policy 4336, West Virginia School Bus Transportation Regulations, Procedures, and Specifications for the Design and Equipment of School Buses.

Hayes Middle School

| Route | Community | One-way Travel Time | Amount Exceeding Recommended Travel Times | Is a Waiver of W. Va. 126CSR92, Policy 4336 Required (Yes / no) |
|---------|-----------------|---------------------|---|---|
| 413.106 | Green Valley | 27 Min | 0 Min | No |
| 413.003 | Jefferson | 43 Min | 0 Min | No |
| 413.102 | Downtown | 28 Min | 0Min | No |
| 409.101 | Strawberry Road | 45 Min | 0 Min | No |
| 409.102 | Tornado | 44 Min | 0 Min | No |
| 409.103 | Dry Ridge | 50 Min | 5 Min | Current Route |
| 409.108 | Winfield Road | 28 Min | 0 Min | No |
| 409.110 | Amandaville | 35 Min | 0 Min | No |

Transportation Table 3

3.2.f. Educational Program

County Procedures

Analysis and Assurance of Consideration

Complete a projected educational program improvement analysis which includes a statement of assurance that the following have been considered:

Affected School Name(s)

McKinley Middle School and Hayes Middle School

In the preparation of the documents regarding the closure and/or consolidation of the above referenced school, the following codes and policies have been considered:

Please check each item that was considered.

- W. Va. 126CSR16, Policy 2419, Regulations for the Education of Students with Exceptionalities,*
- W. Va. 126CSR42, Policy 2510, Assuring the Quality of Education: Regulations for Education Programs,*
- W. Va. 126CSR44 et al., Policy 2520, Content Standards and Objectives for West Virginia Schools,*
- WVBE Policy 6200-Planning of School Facilities*
- WVBE Policy 6204-School Closings or Consolidations*

See Appendix

Superintendent

Date:

3.2.g. Community

An impact statement regarding the effect the proposed school closure or consolidation will have on the affected communities and their students. Where schools and their respective communities are all defined by their own unique relationships, each proposed action will result in varying types and degrees of community impact. To better understand this diverse relational dynamic, the impact statement shall describe:

1. The known relationships that exist among the affected schools and their communities.

Identify School(s): McKinley Middle School

McKinley Middle School is located 6.1 miles, about a 16-minute drive by car, from Hayes Middle School. Students from Alban Elementary and Central Elementary schools attend McKinley Middle School for grades 6 through 8. Students from McKinley Middle School attend Saint Albans High School for grade levels 9 through 12.

Identify School(s): Hayes Middle School

Hayes Middle School is located 6.1 miles, about a 16-minute drive by car, from McKinley Middle School. Students from Andrews Heights Elementary, Lakewood Elementary, Anne Bailey Elementary, and Central Elementary schools attend Hayes Middle School for grade levels 6 through 8. Students from Hayes Middle School attend Saint Albans High School for grade levels 9 through 12.

2. How the existing known relationships could be impacted by the proposed action.

Identify School(s): McKinley Middle School

McKinley Middle School is located in the incorporated city of Saint Albans. The City of Saint Albans and the local community show an immense amount of support for McKinley Middle School and all of its offered programs. Some of the businesses located near McKinley Middle School are Kanawha Terrace IGA, Kanawha Terrace Hardware, Montanaro Bakery & Macarons, Husson's Pizza, Ed's Auto Care, Parmar, and Dollar General. The community of east Saint Albans frequently patronize many of the same businesses, shopping centers, churches, banks, and recreational facilities as the west Saint Albans and surrounding communities.

Identify School(s): Hayes Middle School

Hayes Middle School is located in the unincorporated area of west Saint Albans, located on Strawberry Road. The local communities show an immense amount of support for Hayes Middle School and all of its offered programs. Some of the businesses located near Hayes Middle School are Tudors Biscuit World, Ginos Pizza, GoMart, and K&M Auto Service. West Saint Albans and the surrounding communities frequently patronize many of the same businesses, shopping centers, churches, banks, and recreational facilities as the east Saint Albans community.

3.2.g. Community

3. The potential for new relationships that could be developed under the proposed action.

Identify School(s): McKinley Middle School

Following the closure of McKinley Middle School, new relationships could be formed, through educational, athletic, and community programs. Students transitioning to a different school will benefit from existing programs, sports, and afterschool opportunities. McKinley Middle School will be involved in the planning of merger events for the students and community, held throughout the school year before the proposed consolidation.

Identify School(s): Hayes Middle School

Following the closure of McKinley Middle School, new relationships could be formed, through educational, athletic, and community programs. Students transitioning to a different school will benefit from existing programs, sports, and afterschool opportunities. Hayes Middle will be involved in the planning and host merger events, held throughout the school year before the proposed consolidation.

3.3. & 3.4. Public Notices and Hearings

County Procedures

Notice of Public Hearing(s)

The county must provide notice for the public hearing which shall be advertised through a Class III legal advertisement for three weeks prior to the date of the hearing in a newspaper in general circulation in the locality of any school to be closed or consolidated and in the locality of any school that has been designated by the county to receive students from the schools to be closed or consolidated. The notice also shall be posted in all schools as provided in section 3.3.5 at least 30 days prior to the date of the hearing.

If the county will be applying for SBA funding, the procedures must be completed before the SBA will consider a project for funding, as further outlined in section 6. If the county will be utilizing local funding for a construction project related to the closure or consolidation, the procedures must be completed prior to the initiation of construction. For all other closures and consolidations, counties must complete the procedures on or before December 31st of the calendar year prior to the calendar year in which the closures or consolidations are to be effective.

NOTICE OF PUBLIC HEARING
Kanawha County Schools
W. Va. 18-5-13a
W. Va. Board of Education Policy 6204

DATE and TIME: Wednesday, October 9, 2024, at 6:00 p.m.
Sign in between 5:00 and 5:55 p.m. to speak.

ALTERNATIVE DATE and TIME: If, in the event of inclement weather or other factors beyond the control of the board, the hearing cannot take place at the date and time set forth above, the hearing will be held on Tuesday, October 29, 2024, at 6:00 p.m.

PLACE: St. Albans High School Auditorium, Kanawha Terrace & Hudson St., St. Albans, WV 25177. The hearing location is subject to change if, at the time the meeting is called to order, it is determined that the meeting location is of insufficient size to accommodate those wishing to attend.

The hearing may not continue beyond 11:00 p.m. In the event the hearing is not concluded by 11:00 p.m., the hearing may recess, to continue on dates designated and announced by the board just prior to the hearing recess, to be continued day-to-day until concluded.

Proposed Action of the Board of Education of the County of Kanawha, West Virginia:

McKinley Middle School – Close and transfer of students to Hayes Middle School.

3.3. & 3.4. Public Notices and Hearings

County Procedures

Hearing Procedures: A representative of Kanawha County Schools will provide an oral summary of the reasons and supporting data in connection with the proposed action of the Board. For a period of fifty-five minutes prior to the commencement of the public hearing, persons may sign a register for the purpose of making statements, offering testimony and questioning school officials. Persons wishing to speak about the effects of the proposed closure of McKinley Middle and consolidation into Hayes Middle, as well as those who wish to speak as members of the general public, will be recognized in the order in which they have signed the register. Each person shall be limited to three/five minutes. Written statements may be submitted in lieu of oral statements or testimony and must be submitted prior to the conclusion of the hearing. Any written statement will be given full consideration before the board takes any final action.

Reasons and supporting data available for public inspection: Written reasons and supporting data in connection with the proposed action of the Board are available for public inspection beginning September 4 2024, through October 9, 2024, between the hours of 7:30 a.m. and 4:00 p.m. in the Office of the Superintendent of Kanawha County Schools located in Room 222, 200 Elizabeth Street, Charleston, West Virginia. The reasons and the supporting data in connection with the proposed actions are also available for inspection at McKinley Middle and Hayes Middle Schools.

Identify Schools: School
First Run: September 10, 2024
Second Run: September 17, 2024
Third Run: September 24, 2024
Fourth Run: October 1, 2024

Qualified Newspaper Name: Charleston Gazette Mail

Proof of Public Hearing(s) Notice

contain proof that the hearings were properly advertised with a class III legal advertisement. Such proof can be satisfied with:

- *a notarized letter from the county's qualified newspaper(s) for legal notices, as defined by the West Virginia Secretary of State, that specifically states the three dates in which the newspaper ran the county's public hearing notification: or*
- *a scan or download for each of the 3 required legal advertisements from the county's qualified newspaper(s) for legal notices, as defined by the West Virginia Secretary of State, where the full legal notification and date of publication is provided and legible.*

See Appendix for this Documentation.

3.3. & 3.4. Public Notices and Hearings

County Procedures

Public Hearing(s) Documentation

Provide documentation of all hearings, motions, written public comments, a synopsis or transcript of verbal public comments, and other actions concerning the proposed school closings and consolidations.

[See Appendix for this Documentation.](#)

3.6. County Board Actions

County Procedures

County Board Vote(s)

After the vote and following compliance with sections 3.4 and 3.5, and prior to the implementation of any school closure or consolidation and following compliance with all statutory and regulatory provisions, the county must file a request for school closure and/or consolidation with the WVBE for approval.

Comprehensive Educational Facilities Plan (CEFP)

Identify if the proposed school closing or consolidation was included in the county's approved CEFP. If the county's approved CEFP did not contain the proposed closure or consolidation, the county must also submit a request to amend their CEFP. Such request shall include all required CEFP amendment forms.

The closure of McKinley Middle School is congruent with Kanawha County Schools 2020- 2030 CEFP Plan.

School Building Authority of WV

Identify if the proposed school closing or consolidation is contingent upon receiving funding from the SBA.

The closure of McKinley Middle School is not contingent upon SBA funding. The McKinley Middle School students would be absorbed into Hayes Middle School.

3.6.a. Superintendent Verification of Board Actions

County Procedures

McKinley Middle School and Hayes Middle Schools

Date of hearing: Wednesday, October 9, 2024, at 6:00 P.M.

Date of board approval: Wednesday, October 9, 2024, following hearing

Kanawha County requests the West Virginia Board of Education approve the following.

Closure and Consolidation of McKinley Middle School into Hayes Middle School.

- The county assures that the applicable sections of the W. Va. Codes §18-5-13 and §18-5-13a, and WVBE Policies 6200 and 6204 have been addressed.*
- This action is justified by the provided supplemental data and information pertinent to the following subjects: enrollment, facilities, finance, personnel, transportation, and educational programs.*
- Documentation of all hearings, motions, written public comments, a synopsis or transcript of verbal comments, and other actions concerning the proposed school closings and consolidations were provided in this document.*
- All hearings were properly advertised with a class III legal advertisement.*

Thomas E. Williams, Jr., Ed.D.

Signature of county superintendent attesting to the completion of all requirements as stated in W. Va. Codes §18-5-13 and §18-5-13a and WVBE Policies 6200 and 6204.

See Appendix

Superintendent

Date:

Appendix of Supporting Data

The list should include at a minimum the following data:

- 1. SBA Worksheet on Building Program Utilization for all affected schools (Required)*
- 2. Supporting Photographs, Floorplans, and other Documentation (As needed)*
- 3. SBA Facility Condition Documentation for all affected schools (Required)*
- 4. Proof of Public Hearing(s) Notice for all affected schools (Required)*
- 5. Public Hearing(s) Documentation for all affected schools (Required)*
- 6. Board minutes indicating the action of the board to approve the closure(s) (Required)*
- 7. Cover letter addressed to the State Superintendent of Schools (Required)*
- 8. Completed superintendent signature pages (Required)*
- 9. Most current October 1st certified enrollment for county (Required)*

Table of Contents Entries

Table of Contents Sub Entries

Subtitles

County Narrative

Sub Notes

Directions

Policy Request

Appendix of Supporting Data

County Procedures

1. SBA Worksheets on Building Program Utilization

The supporting School Building Authority of West Virginia's (SBA) Worksheets on Building Program Utilization for:

[McKinley Middle School](#) Utilization Sheet

[Hayes Middle School](#) Utilization Sheet

[Hayes Middle School](#) Utilization Sheet (Combined)

School Building Authority of West Virginia
BUILDING PROGRAM UTILIZATION WORKSHEET
 Worksheet #3
SBA FORM 301-C

NOTE: THIS FORM MAY BE SUBSTITUTED FOR A SIMILAR SBA-APPROVED DIGITAL INSTRUMENT

County: Kanawha County

School: McKinley Middle School

Current Enrollment: 289

| <i>Classroom Types</i> | <i>Number Of Classroom Types</i> | <i>x</i> | <i>Maximum Pupils/ Class Capacity</i> | <i>=</i> | <i>Total Program Capacity</i> |
|------------------------|----------------------------------|----------|---------------------------------------|----------|-------------------------------|
| Regular Classroom | 9 | | 25 | | 225 |
| Computer Lab | 1 | | 25 | | 25 |
| Art Lab | 1 | | 25 | | 25 |
| Music Classroom | 2 | | 25 | | 50 |
| Special Ed. CR | 5 | | 6 | | 30 |
| Technical Education | 1 | | 20 | | 20 |
| Physical Education | 1 | | 50 | | 50 |
| Science CR/Lab | 3 | | 25 | | 50 |
| | | | | | |
| TOTALS: | 23 | | | | 500 |

Program Utilization ($\frac{289}{\text{Current Enrollment}}$ divided by $\frac{500}{\text{Total Program Capacity}}$) times 100 = 57.8% Program Utilization

SCHOOLS PROGRAM UTILIZATION = 57.8%

Desirable Program Capacity = 85%

Instructions for Calculating Building Program Utilization

Elementary School – Calculate the number and type of classrooms using the maximum program capacity for each self-contained regular classroom. Assume for example – that all students are seated in a first period block without pullout programs. Do not include library/media, cafeteria, itinerant spaces, resource rooms, or optional academic classrooms such as art, music and computer labs that act as pullout programs to support the core curriculum.

Secondary School – Middle/Junior High School programs where various schedules exist, calculate the number and type of classrooms using the maximum program capacity for each regular or special classroom. Assume for example, that all students are seated in a first period block and exclude library/media, commons or any space that cannot be used for other course offerings in the daily capacity of each facility. The maximum capacity for instructional spaces for specialty classrooms is counted once. A specialty classroom may be available throughout the school day but due to its specialized design or equipment it is rendered impractical to use for other instructional purposes.

SBA 301-C

School Building Authority of West Virginia
BUILDING PROGRAM UTILIZATION WORKSHEET
 Worksheet #3
SBA FORM 301-C

NOTE: THIS FORM MAY BE SUBSTITUTED FOR A SIMILAR SBA-APPROVED DIGITAL INSTRUMENT

County: Kanawha County

School: Hayes Middle School

Current Enrollment: 442

| <i>Classroom Types</i> | <i>Number Of Classroom Types</i> | <i>x</i> | <i>Maximum Pupils/ Class Capacity</i> | <i>=</i> | <i>Total Program Capacity</i> |
|------------------------|----------------------------------|----------|---------------------------------------|----------|-------------------------------|
| Regular Classroom | 22 | | 25 | | 550 |
| Computer Labs | 1 | | 25 | | 25 |
| Art Lab | 1 | | 25 | | 25 |
| Special Ed. CR | 5 | | 6 | | 30 |
| Music CR | 1 | | 25 | | 25 |
| Physical Education | 1 | | 50 | | 50 |
| Science Classrooms | 3 | | 25 | | 75 |
| | | | | | |
| | | | | | |
| TOTALS: | 34 | | | | 780 |

Program Utilization ($\frac{442}{\text{Current Enrollment}}$ divided by $\frac{780}{\text{Total Program Capacity}}$) times 100 = 56.7 % Program Utilization

SCHOOLS PROGRAM UTILIZATION = 56.7 % Desirable Program Capacity = 85%

Instructions for Calculating Building Program Utilization

Elementary School – Calculate the number and type of classrooms using the maximum program capacity for each self-contained regular classroom. Assume for example – that all students are seated in a first period block without pullout programs. Do not include library/media, cafeteria, itinerant spaces, resource rooms, or optional academic classrooms such as art, music and computer labs that act as pullout programs to support the core curriculum.

Secondary School – Middle/Junior High School programs where various schedules exist, calculate the number and type of classrooms using the maximum program capacity for each regular or special classroom. Assume for example, that all students are seated in a first period block and exclude library/media, commons or any space that cannot be used for other course offerings in the daily capacity of each facility. The maximum capacity for instructional spaces for specialty classrooms is counted once. A specialty classroom may be available throughout the school day but due to its specialized design or equipment it is rendered impractical to use for other instructional purposes.

SBA 301-C

School Building Authority of West Virginia
BUILDING PROGRAM UTILIZATION WORKSHEET
 Worksheet #3
 SBA FORM 301-C

NOTE: THIS FORM MAY BE SUBSTITUTED FOR A SIMILAR SBA-APPROVED DIGITAL INSTRUMENT

County: Kanawha County School: Hayes Middle School Receiving Enrollment: 675

| <i>Classroom Types</i> | <i>Number Of Classroom Types</i> | <i>x</i> | <i>Maximum Pupils/ Class Capacity</i> | <i>=</i> | <i>Total Program Capacity</i> |
|------------------------|----------------------------------|----------|---------------------------------------|----------|-------------------------------|
| Regular Classroom | 22 | | 25 | | 550 |
| Computer Labs | 1 | | 25 | | 25 |
| Art Lab | 1 | | 25 | | 25 |
| Special Ed. CR | 5 | | 6 | | 30 |
| Music CR | 1 | | 25 | | 25 |
| Physical Education | 1 | | 50 | | 50 |
| Science Classrooms | 3 | | 25 | | 75 |
| | | | | | |
| | | | | | |
| TOTALS: | 34 | | | | 780 |

Program Utilization (675 divided by 780) times 100 = 86.5%
 %

Current Enrollment Total Program Capacity Program Utilization

SCHOOLS PROGRAM UTILIZATION = 86.5% Desirable Program Capacity = 85%

Instructions for Calculating Building Program Utilization

Elementary School – Calculate the number and type of classrooms using the maximum program capacity for each self-contained regular classroom. Assume for example – that all students are seated in a first period block without pullout programs. Do not include library/media, cafeteria, itinerant spaces, resource rooms, or optional academic classrooms such as art, music and computer labs that act as pullout programs to support the core curriculum.

Secondary School – Middle/Junior High School programs where various schedules exist, calculate the number and type of classrooms using the maximum program capacity for each regular or special classroom. Assume for example, that all students are seated in a first period block and exclude library/media, commons or any space that cannot be used for other course offerings in the daily capacity of each facility. The maximum capacity for instructional spaces for specialty classrooms is counted once. A specialty classroom may be available throughout the school day but due to its specialized design or equipment it is rendered impractical to use for other instructional purposes.

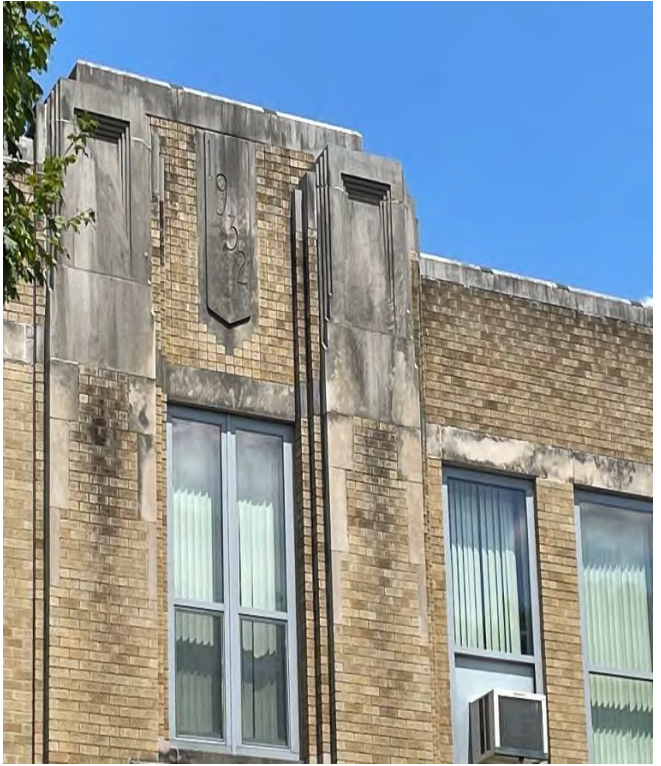
Appendix of Supporting Data

County Procedures

2. Supporting Photographs, Floorplans, and other Documentation

McKinley Middle School























































Hayes Middle School





















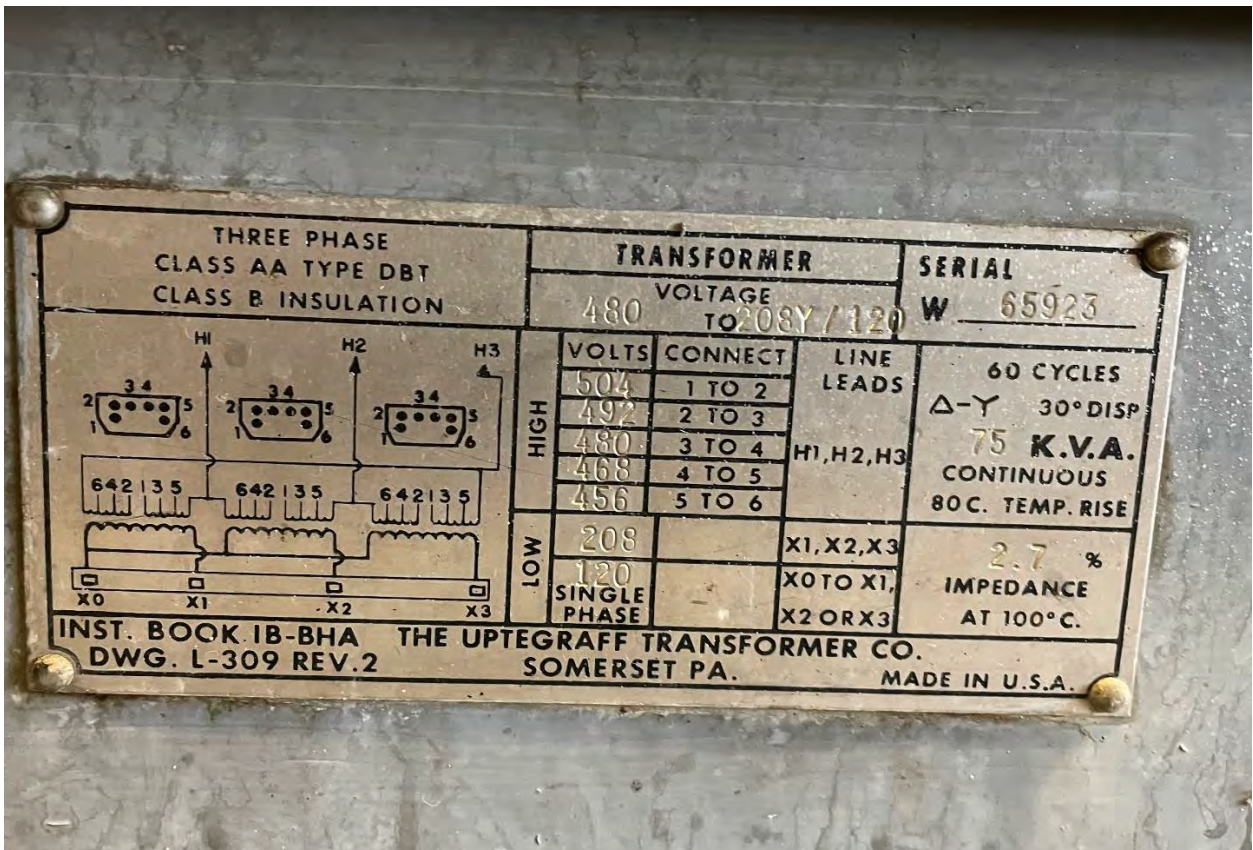




















Appendix of Supporting Data

County Procedures

3. SBA Facility Condition Documentation

The supporting School Building Authority of West Virginia's (SBA) Facility Evaluation Form for:

East Bank Middle School Facility Evaluation Form

Dupont Middle School Facility Evaluation Form

School Building Authority of West Virginia
 18A Evans, 134 State Capitol Plaza
 Charleston, West Virginia 25301

Full All Items Name: 2015/16
 Category: 130
 Current Fundament: 130

Original Construction #: 1372
 Current Fundament: 130



| System | | | | Payments | | | |
|----------------------|------------|---------------------|------------|----------------|------------|------------|--------|
| Production Agreement | Contract | Year Installed | Material | Year Installed | Condition | SP | Notes |
| 1. 2015/16 | 1. 2015/16 | 1. 2015/16 | 1. 2015/16 | 1. 2015/16 | 1. 2015/16 | 1. 2015/16 | |
| Payment Building | | | | | | | |
| Record Building Name | Include | Production Building | Year Built | Location | Roof | Roof | Roof |
| 1. McKinley | Y | 2015 | No | 2015 | N | 2 | |
| 2 | | | | | | | |
| 3 | | | | | | | |
| 4 | | | | | | | |
| 5 | | | | | | | |
| 6 | | | | | | | |
| 7 | | | | | | | |
| 8 | | | | | | | |
| 9 | | | | | | | |
| 10 | | | | | | | |
| Total GIP | | | | | | | 240000 |

| Record Building Name | | | |
|----------------------|------------|------------|------------|
| Year Built | Roof | Roof | Roof |
| 1. 2015/16 | 1. 2015/16 | 1. 2015/16 | 1. 2015/16 |
| 2 | | | |
| 3 | | | |
| 4 | | | |
| 5 | | | |
| 6 | | | |
| 7 | | | |
| 8 | | | |
| 9 | | | |
| 10 | | | |
| Total GIP | | | |

| Overview of Findings | | | |
|--|--|--|--|
| The building is in poor condition and needs major repairs. | | | |
| The roof is in poor condition and needs major repairs. | | | |
| The building is in poor condition and needs major repairs. | | | |
| The building is in poor condition and needs major repairs. | | | |
| The building is in poor condition and needs major repairs. | | | |
| The building is in poor condition and needs major repairs. | | | |
| The building is in poor condition and needs major repairs. | | | |
| The building is in poor condition and needs major repairs. | | | |
| The building is in poor condition and needs major repairs. | | | |
| The building is in poor condition and needs major repairs. | | | |

School Building Authority of West Virginia
SBA Form 134 Data Collection Form
Building Information Sheet

| | | | | |
|-------------------------|------------------------|------|-----------------------|---|
| Building Name | McKinley Middle School | 1933 | # Floors (incl. Bas.) | 2 |
| Building Area (sq. ft.) | 68,000 (N/A) | N | # Floors (excl. Bas.) | 2 |

| System | Material | Count | Year installed if different from building | Condition | Notes |
|---|------------------------------------|-------|---|-------------------|--|
| Concealing Systems | Electric (E) Staps | 1 | | 3 - Average | 29 of 29 systems have been evaluated |
| Electrical - Branch Wiring | | | | 3 - Average | The majority of wiring in this building is over 50 years old. |
| Electrical - Lighting | Fluorescent | | | 3 - Average | |
| Electrical - Emergency Lighting and Exit Signs | | | | 3 - Average | |
| Electrical - Service and Distribution | Includes Commercial | | | 2 - Below Average | 1,000 A, 208/120 V 3 phase MPE serves older 50+ years old distribution equipment. |
| Equipment & Furnishings - Institutional Equipment | Wood | | | 3 - Average | loading dock doors and original built-in cupboards need replaced, heavy damage |
| Exterior Enclosure - Exterior Doors | Masonry | | | 3 - Average | Some front windows have been replaced, but the majority of the school's original windows that look as if need replaced. |
| Exterior Enclosure - Exterior Wall Finishes | Single Pane, wood, All Light types | | | 2 - Below Average | |
| Exterior Enclosure - Exterior Windows | | | | 3 - Average | Fire Alarm Control Panels (CEST), fairly new. |
| Fire Protection - Fire Alarms & Detection | | | | 3 - Average | |
| Fire Protection - Sprinklers and Standpipes | | | | 3 - Average | "S" service, not original, age is unknown. |
| HVAC - Terminal & Package Units | | | | Not Present | See Overview for details |
| HVAC - Distribution System | | | | 2 - Below Average | 1932 building - Controls heating and ventilating system (combined with control HW coil) that is 80 years old. 1953 Addition - Controls heating and ventilating system (combined with control HW coil) that is 60 years old. 1953 Addition 2, 500 mah (non) Forced Draft Boilers (1996), 1959 Addition, 3, 1000 mah (non) Forced Draft Boilers (2012) |
| HVAC - Heat Generating Systems | | | | 3 - Average | |
| HVAC - Cooling Generating Systems | | | | Not Present | |
| HVAC - Controls and Instrumentation | | | | 3 - Average | DC controls |
| Interior Construction - Interior Doors | Solid Core Wood | | | 3 - Average | |
| Interior Construction - Specialties and Casework | | | | 3 - Average | |
| Interior Finishes - Ceiling Finishes | Acoustical Tile | | | 3 - Average | |
| Interior Finishes - Floor Finishes | Grey Composition Tile | | | 3 - Average | Second floor has large portion of 5'x9" tile in classrooms that should be removed |
| Interior Finishes - Gymnasium Floor Finishes | Polished Concrete | | | 3 - Average | Wood floor was replaced this past summer. |
| Interior Finishes - Wall Finishes | | | | 3 - Average | |
| Plumbing - Domestic Water Distribution | Manual | | | 3 - Average | |
| Plumbing - Fixtures | | | | 2 - Average | |
| Plumbing - San Water Drainage | | | | 3 - Average | |
| Plumbing - Sanitary Sewer | | | | 3 - Average | |
| Roofing - Roof Coverings | Modified Bitumen | | | 2 - Below Average | There are multiple roof leaks at old skylight locations and staining from old repairs. |
| Security System | | | | 3 - Average | |
| Technology Infrastructure | | | | 3 - Average | |

School Building Authority of West Virginia
 SBA Form 134 Data Collection Form
 Facility General Information Sheet

1 - Facility General Information Worksheet

| | | | |
|----------------|------------------------|--------------------------------|----------|
| LEA ID: | 039413 | Assessment Date: | 10/14/19 |
| County: | Kanawha | Total Gross Square Feet: | 68,000 |
| Facility Name: | McKinley Middle School | Original Year of Construction: | 1932 |

Energy Indexes

(List the total amount of each fuel source used for one year)

| Source (Units) | Consumption per Year | Conversion (BTU/Unit) | Total BTU |
|---------------------------|----------------------|-----------------------|---------------|
| Electric (Kilowatt-Hrs) | 625,100 | 3,412 | 2,132,928,714 |
| Natural Gas (MCF) --OR-- | 4,178 | 1,037,000 | 4,332,586,000 |
| Natural Gas (Decootherms) | | 1,000,000 | - |
| Coal (Tons) | | 24,000,000 | - |
| #2 Fuel Oil (Gallons) | | 138,874 | - |
| Propane (Pounds) | | 21,600 | - |
| Used Oil (Gallons) | | 125,000 | - |
| Wood Chips (Tons) | | 16,500,000 | - |
| Other (specify) | | | - |
| Amount: | | | |
| Units: | | | |

Worksheet Links:

Total BTU: 6,465,514,714
 Energy Utilization Index (EUI): 95,081

School Building Authority of West Virginia
 SBA Form 134 Data Collection Form
 Site Evaluation Sheet

| | | | |
|----------------|------------------------|--------------------------------|----------|
| LEA ID: | 039413 | Assessment Date: | 10/14/19 |
| County: | Kanawha | Total Gross Square Feet: | 68,000 |
| Facility Name: | McKinley Middle School | Original Year of Construction: | 1932 |

2 - Site Evaluation Worksheet

Site

| | |
|----------------------------------|-------|
| City or Rural: | City |
| Actual Acres: | 16.85 |
| Useable Acres: | 8.25 |
| Site adequate for expansion: | Yes |
| Are public parks/areas adjacent: | No |
| % site out of flood plain: | 49% |
| % site in flood plain: | 51% |

| | |
|-------------------------|-----------|
| Site Remarks: | |
| Overall Site Condition: | 3-Average |

Drainage

| | |
|-----------------------------|--|
| Drainage Remarks: | Small area of standing water behind bleachers is recurring problem |
| Overall Drainage Condition: | 3-Average |

Parking

| | |
|----------------------------|-----------------|
| Parking Adequately Lit: | No |
| Adequacy of Parking: | 2-Below Average |
| Parking Remarks: | |
| Overall Parking Condition: | 2-Below Average |

Bus Loading

| | |
|--------------------------------|-----------------|
| Bus Loading Adequate: | No |
| Bus Loading Remarks: | |
| Overall Bus loading Condition: | 2-Below Average |

Access Roads

| | |
|------------------------------------|-----------|
| Adequacy of On-Site Access Roads: | 3-Average |
| Adequacy of Off-Site Access Roads: | 3-Average |

Access Roads Remarks: [Redacted]
 Overall Access Road Condition: 3-Average

Playfields/Playcourts

Adequacy of Playfields: 3-Average
 Adequacy of Playcourts: 2-Below Average
 Playfields/Playcourts Remarks: [Redacted]
 Overall Playfield/Playcourts Condition: 3-Average

Site Utilities

Electrical Services:

Phase: 3
 Voltage: 208/120
 Amps: 1000
 Electric Utility Company: AEP
 Main Service Feed into Building: Underground

Electrical Service Remarks: [Redacted]
 Overall Electrical Service Condition: 3-Average

Fuel Sources:

Natural Gas: Yes
 Coal:
 Fuel Oils:
 Propane:
 Other (Specify):
 Fuel Line Size (inches): 8" service reduced to 6"
 Fuel Utility Company: Mountaineer Gas

Fuel Sources Remarks: [Redacted]
 Overall Fuel Sources Condition: 3-Average

Water Sources:

Public: Yes
 Well:
 Water Line Size (inches): 3"
 Water Utility Company: St. Albans

Water Sources Remarks: [Redacted]
 Overall Water Sources Condition: 3-Average

Sewage Systems:

Public: Yes
Septic:
Other (Specify):
Public Service District (PSD): St. Albans

Sewage System Remarks:

Overall Sewage System Condition: 3-Average

School Building Authority of West Virginia
 SBA Form 134 Data Collection Form
 Building Component Evaluation Sheet

| | | | |
|----------------|------------------------|--------------------------------|----------|
| LEA ID: | 039413 | Assessment Date: | 10/14/19 |
| County: | Kanawha | Total Gross Square Feet: | 68,000 |
| Facility Name: | McKinley Middle School | Original Year of Construction: | 1932 |

3 - Building Component Evaluation Worksheet

Building Structures:

Type:

Load Bearing Masonry

Building Structures Remarks:

Overall Building Structure Condition:

3-Average

Floor Structures:

Steel Joist/Concrete (floor area SF):

31,611

Wood Joists (floor area SF):

15,456

Slab on Grade (floor area SF):

17,136

Other (specify) / Floor area SF:

Floor Structure Remarks:

Overall Floor Structure Condition:

3-Average

Roof:

Roof Structure:

Steel Joists

Roof Structures Remarks:

Overall Roof Condition:

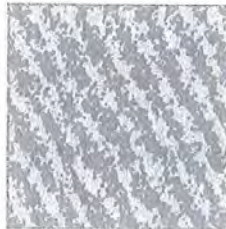
Original building is wood joist

3-Average

Building Systems:

The systems below are addressed in the FCA data collection tool.

- Roof Coverings
- Wall Finishes
- Ceiling Finishes
- Floor Finishes
- Doors
- Windows
- HVAC
- Electrical
- Fire Alarm



Technology Infrastructure:

Sufficient Electrical Capacity:

Yes

3-Average

Power Receptacles Availability:

Yes

3-Average

| | | |
|--|-----------|-----------------|
| ID Network Type (if available): | Yes | 3-Average |
| Inventory Records Hardware | Yes | 4-Above Average |
| Other (specify): | | |
| Deficiencies: | | |
| Technology Remarks: | | |
| Overall Technology Infrastructure Cond | 3-Average | |

Technology Assessment:

| | |
|-------------------------------|-----------------|
| Teacher Training: | 4-Above Average |
| Software Use: | 4-Above Average |
| Purchasing Practices: | 4-Above Average |
| Network Administration: | 4-Above Average |
| Inventory Records | 4-Above Average |
| Other (specify): | |
| Deficiencies: | |
| Technology Remarks: | |
| Overall Technology Condition: | 4-Above Average |

School Access Safety Audit:

| | |
|----------------------------------|--|
| Planning: | |
| Deterrence: | |
| Detection: | |
| Delay: | |
| Communication: | |
| Evacuation: | |
| Safety Remarks: | |
| Overall Access Safety Condition: | |

School Building Authority of West Virginia
 SBA Form 134 Data Collection Form
 Facility Spaces Evaluation / Utilization Analysis Sheet

LEA ID: 039413
 County: Kanawha
 Facility Name: McKinley Middle School
 Assessment Date: 43752
 Total Gross Square Feet: 68000
 Original Year of Construction: 1932

| Classroom Type | Number of Class Types (ES) | Number of Class Types (MS) | Number of Class Types (HS) | X | Max Students Per Room | = | Total Program Capacity | Utilization Calculation |
|-----------------------------|----------------------------|----------------------------|----------------------------|---|-----------------------|---|------------------------|-------------------------|
| Pre-Kindergarten (Full Day) | | | | | 20 | | 0 | Current Enrollment |
| Kindergarten (Full Day) | | | | | 20 | | 0 | 315 |
| General Purpose Classroom | | 9 | | | 25 | | 225 | |
| Computer Lab | n/a | 1 | | | 25 | | 25 | Total Program Capacity |
| Art Lab | n/a | 1 | | | 25 | | 25 | 500 |
| Music Classroom | n/a | 2 | | | 25 | | 50 | |
| Special Ed Pull-out | n/a | n/a | n/a | | 0 | | 0 | |
| Special Ed Level 1: (PK-5) | | | | | 6 | | 0 | |
| Special Ed Level 1: (6-12) | n/a | 0 | | | 12 | | 0 | |
| Special Ed Level 2: (PK-12) | | 0 | | | 12 | | 0 | |
| Special Ed Level 3: (PK-12) | | 0 | | | 8 | | 0 | |
| Special Education Classroom | | 5 | | | 6 | | 30 | Utilization Calculation |
| Technical Education/ Voc Ag | n/a | 1 | | | 20 | | 20 | 63% |
| Physical Education | n/a | 1 | | | 50 | | 50 | |
| Science Classroom/Lab | n/a | 3 | | | 25 | | 75 | Desirable Utilization |
| Business Education | n/a | 0 | | | 25 | | 0 | 85% |
| Family Liv/Cons Economics | n/a | 0 | | | 25 | | 0 | |
| Totals | 0 | 23 | 0 | | | | 500 | Difference |
| | | | | | | | | -22% |

Complete ONLY the column below associated with the highest grade level for this school.

Grade Config: 6-8
 Age of Facility: 88
 No. of Renovations: []
 Square Ft: 68,000
 Portables: 1
 Location (City, St): St. Albans, WV

Lowest Grade Level: 6
 Highest Grade Level: 8

School Building Authority of West Virginia
SBA Form 134 Data Collection Form
School Improvement Cost Summary Sheet

| | | | |
|-----------------------------|------------------------|--------------------------------|----------|
| LEA ID: | 039413 | Assessment Date: | 10/14/19 |
| County: | Kanawha | Total Gross Square Feet: | 68000 |
| Facility Name: | McKinley Middle School | Original Year of Construction: | 1932 |
| Design Capacity Enrollment: | 500 | | |

Please note, the current-year costs shown below are intended to provide a Rough Order of Magnitude (ROM) estimate of costs. While they are appropriate for high-level capital forecasting, they should not be relied upon for determining specific project funding values. Actual project costs will likely deviate from the presented values due to a variety of factors including, but not limited to, hard and soft cost fluctuations and the actual date of construction for the intended project. Therefore, detailed cost estimates are recommended to validate funding requirements prior to obligating funds for facility replacement or renovation.

Improvement Item

1. Site Work

| | Unit | Quantity | Unit Cost | Item Cost | Remarks |
|-------------------------------|--------|----------|-----------|-------------|---------|
| Land Acquisition | Acres | | | \$ - | |
| Excavation/Grade | CUB FT | | | \$ - | |
| Drainage | LIN FT | | | \$ - | |
| Walks (6 ft wide) | SQ FT | | | \$ - | |
| Parking | SQ FT | | | \$ - | |
| Bus Loading | SQ FT | | | \$ - | |
| Roads | SQ FT | | | \$ - | |
| Playing Fields | SQ FT | | | \$ - | |
| Other (Describe in 'Remarks') | | | | \$ - | |
| Other (Describe in 'Remarks') | | | | \$ - | |
| Other (Describe in 'Remarks') | | | | \$ - | |
| Sub-Total | | | | \$ - | |

2. Renovations, Exterior

| | Unit | Quantity | Unit Cost | Item Cost | Remarks |
|-------------------------------|----------|----------|---------------|------------------------|---------|
| Wall Structure | SQ FT | | | \$ - | |
| Floor Structure | SQ FT | | | \$ - | |
| Roof Structure | SQ FT | | | \$ - | |
| Wall Facing | SQ FT | | | \$ - | |
| Windows | EACH | | | \$ - | |
| Doors/Frames | EACH | | | \$ - | |
| Roofing | SQ FT | 68,000 | \$ 20.00 | \$ 1,360,000.00 | |
| Coping/Parapet | LIN FT | | | \$ - | |
| Painting | SQ FT | | | \$ - | |
| Other (Describe in 'Remarks') | LUMP SUM | 1 | \$ 200,000.00 | \$ 200,000.00 | WINDOWS |
| Other (Describe in 'Remarks') | | | | \$ - | |
| Other (Describe in 'Remarks') | | | | \$ - | |
| Sub-Total | | | | \$ 1,560,000.00 | |

3. Renovations, Interior

| | Unit | Quantity | Unit Cost | Item Cost | Remarks |
|-------------------------------|-------|----------|-----------|------------------------|---------|
| Floor Covering | SQ FT | | | \$ - | |
| Patch & Painting | SQ FT | | | \$ - | |
| Ceiling Finish | SQ FT | | | \$ - | |
| Plumbing | SQ FT | | | \$ - | |
| Heating/Ventilating | SQ FT | 68,000 | \$ 40.00 | \$ 2,720,000.00 | |
| Air Conditioning | SQ FT | | | \$ - | |
| Lighting | SQ FT | | | \$ - | |
| Wiring | SQ FT | 68,000 | \$ 7.00 | \$ 476,000.00 | |
| Fire Alarm | SQ FT | | | \$ - | |
| Communication System | SQ FT | | | \$ - | |
| Technology | SQ FT | | | \$ - | |
| Interior Doors | EACH | | | \$ - | |
| Other (Describe in 'Remarks') | | | | \$ - | |
| Other (Describe in 'Remarks') | | | | \$ - | |
| Other (Describe in 'Remarks') | | | | \$ - | |
| Sub-Total | | | | \$ 3,196,000.00 | |

4. Building Additions Including Furniture, Furnishings & Equipment

| | Unit | Quantity | Unit Cost | Item Cost | Remarks |
|-------------------------------|-------|----------|-----------|-----------|---------|
| Administration (ES, MS, HS) | SQ FT | | | \$ - | |
| Student Services (ES, MS, HS) | SQ FT | | | \$ - | |

| | | | | | |
|--|-------|-----|-----------|----------------------|----------------------|
| Kindergarten (ES) | SQ FT | | | \$ - | |
| Primary (ES) | SQ FT | | | \$ - | |
| Media Center (ES) | SQ FT | | | \$ - | |
| Basic (MS, HS) | SQ FT | | | \$ - | |
| Reading (MS, HS) | SQ FT | | | \$ - | |
| Health Education (MS, HS) | SQ FT | | | \$ - | |
| Computer Lab (ES, MS, HS) | SQ FT | | | \$ - | |
| Inst. Mat. Center (MS, HS) | SQ FT | | | \$ - | |
| Home Economics (MS, HS) | SQ FT | | | \$ - | |
| Art (ES, MS, HS) | SQ FT | | | \$ - | |
| Ind. Technology (MS, HS) | SQ FT | | | \$ - | |
| Music (ES, MS, HS) | SQ FT | | | \$ - | |
| Physical Education (MS, HS) | SQ FT | | | \$ - | |
| Auditorium (MS, HS) | SQ FT | | | \$ - | |
| Special Education (ES, MS, HS) | SQ FT | | | \$ - | |
| Multi-Purpose (ES) | SQ FT | | | \$ - | |
| Kitchen (ES, MS, HS) | SQ FT | | | \$ - | |
| Dining (MS, HS) | SQ FT | | | \$ - | |
| Business Education (MS) | SQ FT | | | \$ - | |
| Co-Op Education (MS) | SQ FT | | | \$ - | |
| Drivers Education (MS) | SQ FT | | | \$ - | |
| Staff/Faculty (ES, MS, HS) | SQ FT | | | \$ - | |
| Toilets/Fixtures (ES, MS, HS) | SQ FT | | | \$ - | |
| Storage General (ES, MS, HS) | SQ FT | | | \$ - | |
| Storage Instructional (ES, MS, HS) | SQ FT | | | \$ - | |
| Custodial (ES, MS, HS) | SQ FT | | | \$ - | |
| Mechanical (MS, HS) | SQ FT | | | \$ - | |
| Other (Describe in 'Remarks') | SQ FT | 750 | \$ 302.00 | \$ 226,500.00 | SAFE SCHOOL ENTRANCE |
| Other (Describe in 'Remarks') | | | | \$ - | |
| Other (Describe in 'Remarks') | | | | \$ - | |
| Subtotal of Building Additions (SQ FT) | | 750 | | | |
| Circulation | 30% | 225 | \$ 302.00 | \$ 67,950.00 | |
| Sub-Total | | | | \$ 294,450.00 | |

| 5. Special Construction | Unit | Quantity | Unit Cost | Item Cost | Remarks |
|-------------------------------|-------|----------|-----------|-------------|---------|
| Elevator | EACH | | | \$ - | |
| Sprinkler Systems | SQ FT | | | \$ - | |
| Kitchen Equipment | ALL | | | \$ - | |
| Waste Treatment | EACH | | | \$ - | |
| Other (Describe in 'Remarks') | | | | \$ - | |
| Other (Describe in 'Remarks') | | | | \$ - | |
| Other (Describe in 'Remarks') | | | | \$ - | |
| Sub-Total | | | | \$ - | |

| 6. Other Special Costs | Quantity | Unit Cost | Item Cost | Remarks |
|---------------------------------------|----------|-----------|------------------------|---------|
| | | | \$ - | |
| | | | \$ - | |
| | | | \$ - | |
| Sub-Total | | | \$ - | |
| Sub-Total of Items 1 through 6 | | | \$ 5,050,450.00 | |

| 7. Architectural/Engineering Fees | % | Quantity | Item Cost | Remarks |
|-----------------------------------|------|----------------|----------------------|---------|
| New Construction | | | \$ - | |
| Renovations | 7.0% | \$5,050,450.00 | \$ 353,531.50 | |
| Sub-Total | | | \$ 353,531.50 | |

| 8. Miscellaneous | Unit | Quantity | Unit Cost | Item Cost | Remarks |
|-------------------------------|------|----------|-----------|-------------|---------|
| Survey | EACH | | | \$ - | |
| Soil Inv. | EACH | | | \$ - | |
| Other (Describe in 'Remarks') | | | | \$ - | |
| Other (Describe in 'Remarks') | | | | \$ - | |
| Other (Describe in 'Remarks') | | | | \$ - | |
| Sub-Total | | | | \$ - | |

| 9. Contingencies | % | Quantity | Item Cost | Remarks |
|------------------|---|----------|-----------|---------|
| New Construction | | | \$ - | |

| | | | |
|-------------|------|----------------|---------------|
| Renovations | 6.0% | \$5,050,450.00 | \$ 303,027.00 |
| Sub-Total | | | \$ 303,027.00 |

| | | | |
|---------------------------------|------------------------|--|--|
| Grand Total Project Cost | \$ 5,707,008.50 | | |
|---------------------------------|------------------------|--|--|

Worksheet Links:

- [Campus Information](#)
- [Building 1](#)
- [Building 2](#)
- [Building 3](#)
- [Building 4](#)

| Reference Data from Prior Sheets (for WVDE Use Only): | |
|---|--------|
| Energy Utilization Index: | 95,081 |
| Current Enrollment: | 315 |
| Program Capacity: | 500 |
| Utilization Calculation: | 63% |
| Building(s) in Floodplain/Floodway: | 0 |

McKinley Middle School

Describe Existing Facility:

McKinley Middle School is a one and two-story masonry wall bearing, and steel frame facility constructed in 1932 with additions in 1938, 1961, and 1990. The building contains 68,000 SF, housing classrooms, computer labs, art studio, music space, media center, resource spaces, physical education/gym, food service spaces with adjacent dining/commons, and administrative/ pupil services suite. There is one double portable building in use on the site.

The building is not sprinkled and is served by public water and sanitary systems. The original building is considered to be in poor condition. Additions are considered average condition.

Describe Existing Facility Site:

Approximate 22-acre site fronting on Kanawha Terrace. Roads are adequate and are separated from pedestrian traffic. Bus loading is adequate and is separated from vehicle traffic. Site storm drainage is adequate. On-site parking is adequate. Separate parent pickup area is not provided. The site further supports paved and grass playfields including football field, spectator seating, running track, tennis courts, softball and baseball fields. The neighborhood is residential and light commercial, rural.

Recommendations for Future Use of Existing Facility:

McKinley Middle School will be closed and a new St. Albans area (Hayes-McKinley Middle School) will be constructed. If the school is not closed, the following improvements are required for McKinley Middle School:

- There is no safe school entrance at this location.
- The 2nd Floor roof has no access.
- There are columns near the locker rooms that need a structural engineer to assess.
- The portable modular building is unknown age, it was moved from another school in the early 2000s.
- All the HVAC equipment in this Building has reached the end of its useful life.
 - Original 1932 Building: Original 13-zone duct Columbus Heating and Ventilating is retrofitted with a HW coil--Fan Room and Ductwork remain. This system is served by 2 Boilers and 1 pump. Cooling in this area is with Window AC Units (R-22), which have no means of Outside Air ventilation.
 - 1959 Addition: HW Unit Ventilators in Classrooms, HW Convectors in Offices, served by 3 Boilers and 2 pumps. The Gym/Stage is served by 2 DX (410A) Cooling only Rooftop Units with 4 duct mounted HW Coils. The Locker rooms have exposed HW fin tube with expanded metal enclosures, with no means of Outside Air ventilation.
 - 1959 Addition: The Kitchen is served by a split system with the indoor unit mounted on top of the Walk-In Cooler. The Unit drain pan overflows regularly, which is a health issue in the Kitchen. Classroom and Office cooling in this area is via Window AC Units (R-22), with no means of Outside Air ventilation.
 - 1990 Addition; 3 Classrooms are served by Horizontal Unit ventilators with HW coils connected to the 1932 Building Boiler system. Cooling is via Condensing Units on the roof.
- Overall adequacy of parking and bus loading conditions are below average, as well as the play courts.
- McKinley will receive a new roof funded by the 2019 excess levy.

Cost Estimates for Recommendations:

The cost for the improvements at McKinley Middle School is \$5,707,008.50. The detailed estimate contained on SBA Form 134 is attached.

School Building Authority of West Virginia
SBA Form 134 Data Collection Form
School Improvement Cost Summary Sheet

| | | | |
|-----------------------------|------------------------|--------------------------------|----------|
| LEA ID: | 039413 | Assessment Date: | 10/14/19 |
| County: | Kanawha | Total Gross Square Feet: | 68000 |
| Facility Name: | McKinley Middle School | Original Year of Construction: | 1932 |
| Design Capacity Enrollment: | 500 | | |

Please note, the current-year costs shown below are intended to provide a Rough Order of Magnitude (ROM) estimate of costs. While they are appropriate for high-level capital forecasting, they should not be relied upon for determining specific project funding values. Actual project costs will likely deviate from the presented values due to a variety of factors including, but not limited to, hard and soft cost fluctuations and the actual date of construction for the intended project. Therefore, detailed cost estimates are recommended to validate funding requirements prior to obligating funds for facility replacement or renovation.

| Improvement Item | Unit | Quantity | Unit Cost | Item Cost | Remarks |
|-------------------------------|--------|----------|-----------|-----------|---------|
| 1. Site Work | | | | | |
| Land Acquisition | Acres | | | \$ - | |
| Excavation/Grade | CUB FT | | | \$ - | |
| Drainage | LIN FT | | | \$ - | |
| Walks (6 ft wide) | SQ FT | | | \$ - | |
| Parking | SQ FT | | | \$ - | |
| Bus Loading | SQ FT | | | \$ - | |
| Roads | SQ FT | | | \$ - | |
| Playing Fields | SQ FT | | | \$ - | |
| Other (Describe in 'Remarks') | | | | \$ - | |
| Other (Describe in 'Remarks') | | | | \$ - | |
| Other (Describe in 'Remarks') | | | | \$ - | |
| Sub-Total | | | | \$ - | |

| Improvement Item | Unit | Quantity | Unit Cost | Item Cost | Remarks |
|---------------------------------|----------|----------|---------------|-----------------|---------|
| 2. Renovations, Exterior | | | | | |
| Wall Structure | SQ FT | | | \$ - | |
| Floor Structure | SQ FT | | | \$ - | |
| Roof Structure | SQ FT | | | \$ - | |
| Wall Facing | SQ FT | | | \$ - | |
| Windows | EACH | | | \$ - | |
| Doors/Frames | EACH | | | \$ - | |
| Roofing | SQ FT | 68,000 | \$ 20.00 | \$ 1,360,000.00 | |
| Coping/Parapet | LIN FT | | | \$ - | |
| Painting | SQ FT | | | \$ - | |
| Other (Describe in 'Remarks') | LUMP SUM | 1 | \$ 200,000.00 | \$ 200,000.00 | WINDOWS |
| Other (Describe in 'Remarks') | | | | \$ - | |
| Other (Describe in 'Remarks') | | | | \$ - | |
| Sub-Total | | | | \$ 1,560,000.00 | |

| Improvement Item | Unit | Quantity | Unit Cost | Item Cost | Remarks |
|---------------------------------|-------|----------|-----------|-----------------|---------|
| 3. Renovations, Interior | | | | | |
| Floor Covering | SQ FT | | | \$ - | |
| Patch & Painting | SQ FT | | | \$ - | |
| Ceiling Finish | SQ FT | | | \$ - | |
| Plumbing | SQ FT | | | \$ - | |
| Heating/Ventilating | SQ FT | 68,000 | \$ 40.00 | \$ 2,720,000.00 | |
| Air Conditioning | SQ FT | | | \$ - | |
| Lighting | SQ FT | | | \$ - | |
| Wiring | SQ FT | 68,000 | \$ 7.00 | \$ 476,000.00 | |
| Fire Alarm | SQ FT | | | \$ - | |
| Communication System | SQ FT | | | \$ - | |
| Technology | SQ FT | | | \$ - | |
| Interior Doors | EACH | | | \$ - | |
| Other (Describe in 'Remarks') | | | | \$ - | |
| Other (Describe in 'Remarks') | | | | \$ - | |
| Other (Describe in 'Remarks') | | | | \$ - | |
| Sub-Total | | | | \$ 3,196,000.00 | |

| Improvement Item | Unit | Quantity | Unit Cost | Item Cost | Remarks |
|---|-------|----------|-----------|-----------|---------|
| 4. Building Additions Including Furniture, Furnishings & Equipment | | | | | |
| Administration (ES, MS, HS) | SQ FT | | | \$ - | |
| Student Services (ES, MS, HS) | SQ FT | | | \$ - | |

| | | | | | |
|---|--------|-----|-----------|----------------------|----------------------|
| Kindergarten (ES) | SQ, FT | | | \$ - | |
| Primary (ES) | SQ, FT | | | \$ - | |
| Media Center (ES) | SQ, FT | | | \$ - | |
| Basic (MS, HS) | SQ, FT | | | \$ - | |
| Reading (MS, HS) | SQ, FT | | | \$ - | |
| Health Education (MS, HS) | SQ, FT | | | \$ - | |
| Computer Lab (ES, MS, HS) | SQ, FT | | | \$ - | |
| Inst. Mat. Center (MS, HS) | SQ, FT | | | \$ - | |
| Home Economics (MS, HS) | SQ, FT | | | \$ - | |
| Art (ES, MS, HS) | SQ, FT | | | \$ - | |
| Ind. Technology (MS, HS) | SQ, FT | | | \$ - | |
| Music (ES, MS, HS) | SQ, FT | | | \$ - | |
| Physical Education (MS, HS) | SQ, FT | | | \$ - | |
| Auditorium (MS, HS) | SQ, FT | | | \$ - | |
| Special Education (ES, MS, HS) | SQ, FT | | | \$ - | |
| Multi-Purpose (ES) | SQ, FT | | | \$ - | |
| Kitchen (ES, MS, HS) | SQ, FT | | | \$ - | |
| Dining (MS, HS) | SQ, FT | | | \$ - | |
| Business Education (MS) | SQ, FT | | | \$ - | |
| Co-Op Education (MS) | SQ, FT | | | \$ - | |
| Drivers Education (MS) | SQ, FT | | | \$ - | |
| Staff/Faculty (ES, MS, HS) | SQ, FT | | | \$ - | |
| Toilets/Fixtures (ES, MS, HS) | SQ, FT | | | \$ - | |
| Storage General (ES, MS, HS) | SQ, FT | | | \$ - | |
| Storage Instructional (ES, MS, HS) | SQ, FT | | | \$ - | |
| Custodial (ES, MS, HS) | SQ, FT | | | \$ - | |
| Mechanical (MS, HS) | SQ, FT | | | \$ - | |
| Other (Describe in 'Remarks') | SQ, FT | 750 | \$ 302.00 | \$ 226,500.00 | SAFE SCHOOL ENTRANCE |
| Other (Describe in 'Remarks') | | | | \$ - | |
| Other (Describe in 'Remarks') | | | | \$ - | |
| Subtotal of Building Additions (SQ, FT) | | 750 | | | |
| Circulation | 30% | 225 | \$ 302.00 | \$ 67,950.00 | |
| Sub-Total | | | | \$ 294,450.00 | |

| | Unit | Quantity | Unit Cost | Item Cost | Remarks |
|-------------------------------|--------|----------|-----------|-------------|---------|
| Elevator | EACH | | | \$ - | |
| Sprinkler Systems | SQ, FT | | | \$ - | |
| Kitchen Equipment | ALL | | | \$ - | |
| Waste Treatment | EACH | | | \$ - | |
| Other (Describe in 'Remarks') | | | | \$ - | |
| Other (Describe in 'Remarks') | | | | \$ - | |
| Other (Describe in 'Remarks') | | | | \$ - | |
| Sub-Total | | | | \$ - | |

| | Quantity | Unit Cost | Item Cost | Remarks |
|---------------------------------------|----------|-----------|------------------------|---------|
| 6. Other Special Costs | | | \$ - | |
| | | | \$ - | |
| | | | \$ - | |
| Sub-Total | | | \$ - | |
| Sub-Total of Items 1 through 6 | | | \$ 5,050,450.00 | |

| | % | Quantity | Item Cost | Remarks |
|-----------------------------------|------|----------------|----------------------|---------|
| 7. Architectural/Engineering Fees | | | \$ - | |
| New Construction | | | \$ - | |
| Renovations | 7.0% | \$5,050,450.00 | \$ 353,531.50 | |
| Sub-Total | | | \$ 353,531.50 | |

| | Unit | Quantity | Unit Cost | Item Cost | Remarks |
|-------------------------------|------|----------|-----------|-------------|---------|
| 8. Miscellaneous | | | | \$ - | |
| Survey | EACH | | | \$ - | |
| Soil Inv. | EACH | | | \$ - | |
| Other (Describe in 'Remarks') | | | | \$ - | |
| Other (Describe in 'Remarks') | | | | \$ - | |
| Other (Describe in 'Remarks') | | | | \$ - | |
| Sub-Total | | | | \$ - | |

| | % | Quantity | Item Cost | Remarks |
|------------------|---|----------|-----------|---------|
| 9. Contingencies | | | \$ - | |
| New Construction | | | \$ - | |

| | | | | |
|-------------|------|----------------|---------------|--|
| Renovations | 6.0% | \$5,050,450.00 | \$ 303,027.00 | |
| Sub-Total | | | \$ 303,027.00 | |

| | | | | |
|---------------------------------|--|--|--|-----------------|
| Grand Total Project Cost | | | | \$ 5,707,008.50 |
|---------------------------------|--|--|--|-----------------|

Worksheet Links:

- [Campus Information](#)
- [Building 1](#)
- [Building 2](#)
- [Building 3](#)
- [Building 4](#)

| Reference Data from Prior Sheets (for WVDE Use Only): | |
|---|--------|
| Energy Utilization Index: | 95,081 |
| Current Enrollment: | 315 |
| Program Capacity: | 500 |
| Utilization Calculation: | 63% |
| Building(s) in Floodplain/Floodway: | 0 |

School Building Authority of West Virginia
 500 Evans III State Collection Bldg
 Canaan, West Virginia 26026

Full of Items Name: 1700
 Category Name: 1300
 Category Type: 0200
 Category Code: 1700000

Original Collection No: 1700
 Current Collection No: 1300
 Current Inventory: 0200



| System | Material | Year Included | Notes |
|--------------------------|--------------|---------------|-----------|
| Professional Development | Construction | 2010-2011 | 2010-2011 |
| Professional Development | Construction | 2011-2012 | 2011-2012 |
| Professional Development | Construction | 2012-2013 | 2012-2013 |
| Professional Development | Construction | 2013-2014 | 2013-2014 |
| Professional Development | Construction | 2014-2015 | 2014-2015 |
| Professional Development | Construction | 2015-2016 | 2015-2016 |
| Professional Development | Construction | 2016-2017 | 2016-2017 |
| Professional Development | Construction | 2017-2018 | 2017-2018 |
| Professional Development | Construction | 2018-2019 | 2018-2019 |
| Professional Development | Construction | 2019-2020 | 2019-2020 |
| Professional Development | Construction | 2020-2021 | 2020-2021 |
| Professional Development | Construction | 2021-2022 | 2021-2022 |
| Professional Development | Construction | 2022-2023 | 2022-2023 |
| Professional Development | Construction | 2023-2024 | 2023-2024 |
| Professional Development | Construction | 2024-2025 | 2024-2025 |

| Received Building Name | Production Building | Include | Location | Estimated | Actual | Exclusions Status |
|---------------------------|---------------------|---------|----------|-----------|--------|--------------------------------------|
| 1 | 2 | 3 | 4 | 5 | 6 | 7 |
| 1. McKinley Middle School | Construction | 7 | 2010 | 76 | 76 | 20 of 20 systems have been installed |
| 2. McKinley Middle School | Construction | 5 | 2010 | 40 | 40 | 20 of 20 systems have been installed |
| 3 | | | | | | |
| 4 | | | | | | |
| 5 | | | | | | |
| 6 | | | | | | |
| 7 | | | | | | |
| 8 | | | | | | |
| 9 | | | | | | |
| 10 | | | | | | |
| Total GPP | | | | | | 76,760 |

| Received Building Name | Production Building | Include | Location | Estimated | Actual | |
|------------------------|---------------------|---------|----------|-----------|--------|--|
| 1 | 2 | 3 | 4 | 5 | 6 | |
| 1 | | | | | | |
| 2 | | | | | | |
| 3 | | | | | | |
| 4 | | | | | | |
| 5 | | | | | | |
| 6 | | | | | | |
| 7 | | | | | | |
| 8 | | | | | | |
| 9 | | | | | | |
| 10 | | | | | | |
| Total GPP | | | | | | |

| Received Building Name | Production Building | Include | Location | Estimated | Actual | |
|------------------------|---------------------|---------|----------|-----------|--------|--|
| 1 | 2 | 3 | 4 | 5 | 6 | |
| 1 | | | | | | |
| 2 | | | | | | |
| 3 | | | | | | |
| 4 | | | | | | |
| 5 | | | | | | |
| 6 | | | | | | |
| 7 | | | | | | |
| 8 | | | | | | |
| 9 | | | | | | |
| 10 | | | | | | |
| Total GPP | | | | | | |

School Building Authority of West Virginia
SBA Form 334 Data Collection Form
Building Information Sheet

| | | | | | |
|-----------------------------|--------------------|--------------------|------|------------------------|---|
| Building Area - Square Feet | Academics Building | Year Built (Month) | 1999 | # Floors (Excl. Basmt) | 1 |
| 35,473 | | (N/A) | N | | |

| System | Material | Count | Year installed if different from Building | Condition | Notes |
|---|-------------------------------------|-------|---|-------------------|---|
| Commoding Systems | | | | Not Present | |
| Electrical - Branch Wiring | | | | 2 - Below Average | Wiring is 60 years old |
| Electrical - Lighting | Fluorescent | | | 3 - Average | |
| Electrical - Emergency Lighting and Exit Signs | | | | 3 - Average | |
| Electrical - Service and Distribution | | | | 2 - Below Average | 600 A 480/277 MDP Fresh Building 2 |
| Equipment & Furnishings - Institutional Equipment | Typical Equipment | | | 3 - Average | |
| Exterior Enclosure - Exterior Doors | Steel | | | 3 - Average | Several doors need painted. |
| Exterior Enclosure - Exterior Wall Finishes | Masonry | | | 3 - Average | |
| Exterior Enclosure - Exterior Windows | Single Pane, Fixed, All Frame Types | | | 2 - Below Average | |
| Fire Protection - Fire Alarm & Detection | | | | 3 - Average | Fire Alarm Control Panel/Control Unit/CP-600 also tests Building 2 |
| Fire Protection - Sprinklers and Standpipes | | | | 3 - Average | Feet from Building 2 |
| mVAC - Terminal & Package Units | | | | Not Present | |
| mVAC - Distribution System | | | | 2 - Below Average | mVAC Piping, Pumps, Classroom Unit, Ventilation, and Indoor Air Handlers with MW coils. |
| mVAC - Heat Generating Systems | | | | 3 - Average | 3-Second Draft 1500 mbh Boilers (2012) NOTE: LOCATED IN BUILDING 2. |
| mVAC - Cooling Generating Systems | | | | Not Present | |
| mVAC - Controls and Instrumentation | | | | 2 - Below Average | Pneumatic and BSC |
| Interior Construction - Interior Doors | Solid Core Wood | | | 3 - Average | |
| Interior Construction - Specialties and Casework | | | | 3 - Average | |
| Interior Finishes - Ceiling Finishes | Acoustic Tile Composition | | | 3 - Average | |
| Interior Finishes - Floor Finishes | Tile | | | 3 - Average | |
| Interior Finishes - Gymnasium Floor Finishes | 3" Hardwood | | | Not Present | |
| Interior Finishes - Wall Finishes | | | | 3 - Average | Feet from Building 2 |
| Plumbing - Domestic Water Distribution | | | | 1 - Average | |
| Plumbing - Fixtures | Manual | | | 3 - Average | |
| Plumbing - Rain Water Drainage | | | | 3 - Average | |
| Plumbing - Sanitary Sewer | | | | 3 - Average | |
| Roofing - Roof Coverings | Membrane | | | 3 - Average | Evidence of prior roof leaks on lecture deck |
| Security System | | | | 3 - Average | |
| Technology Infrastructure | | | | 3 - Average | |

School Building Authority of West Virginia
 SBA Form 134 Data Collection Form
 Building Information Sheet

| | | | |
|----------------------------|--------------------|----------------------|------|
| Building Gross Square Feet | Technical Building | Year Built | 1993 |
| | 40,293 (V/N) | Repart | N |
| | | # Floors (incl. Bsm) | 1 |

| System | Material | Count | Year installed if different from Building | Condition | Notes |
|---|--------------------------------------|-------|---|-------------------|---|
| Conveying Systems | | | | Not Present | 29 of 29 systems have been evaluated |
| Electrical - Branch Wiring | | | | 2 - Below Average | Wiring is 50 years old |
| Electrical - Lighting | Fluorescent | | | 3 - Average | |
| Electrical - Emergency Lighting and Exit Signs | | | | 3 - Average | |
| Electrical - Service and Distribution | | | | 2 - Below Average | 600 A 480/277 fed from Building 2 |
| Equipment & Furnishings - Institutional Equipment | Includes: Commodes | | | 3 - Average | Several doors need painting. Existing lock, door and technology building main entrance doors/frame are rusted and will need to be replaced. |
| Exterior Enclosure - Exterior Doors | Wood | | | 3 - Average | |
| Exterior Enclosure - Exterior Wall Finishes | Masonry | | | 3 - Average | Multiple cracks in Fire Tank/Generator addition walls. Should be looked at further. |
| Exterior Enclosure - Exterior Windows | Single Pane, Fixed, All Frames Types | | | 2 - Below Average | Generator has glass type windows to be replaced. |
| Fire Protection - Fire Alarms & Detection | | | | 3 - Average | Fed from Building 1 |
| Fire Protection - Sprinklers and Standpipes | | | | 3 - Average | PS for electric Fire Pump, indoor Storage Tank, and Generator. Also feeds Building 1 |
| HVAC - Terminal & Package Units | | | | 2 - Below Average | Boiler Gas and Electric/OW em of 3-22 and 410A. |
| HVAC - Distributed System | | | | 3 - Average | |
| HVAC - Heat Generating Systems | | | | Not Present | See Overview |
| HVAC - Cooling Generator Systems | | | | Not Present | |
| HVAC - Controls and Instrumentation | | | | 2 - Below Average | Pneumatic and DDC |
| Interior Construction - Interior Doors | Solid Core Wood | | | 3 - Average | Door to lab Machine room is rusted thru, with hole at floor and is a fire door. |
| Interior Construction - Specialties and Casework | | | | 3 - Average | |
| Interior Finishes - Ceiling Finishes | Exposed V/VI Composition Tile | | | 3 - Average | Dropped ceiling is section dock |
| Interior Finishes - Floor Finishes | | | | 3 - Average | Cracks and missing tiles throughout the length of the cafeteria needs replaced. |
| Interior Finishes - Gymnasium Floor Finishes | | | | 3 - Average | |
| Interior Finishes - Wall Finishes | Painted CMU | | | 1 - Average | |
| Plumbing - Domestic Water Distribution | | | | 3 - Average | |
| Plumbing - Fixtures | Various | | | 3 - Average | |
| Plumbing - Rain Water Drainage | | | | 3 - Average | |
| Plumbing - Sanitary Sewer | | | | 3 - Average | |
| Roofing - Roof Coverings | Membrane | | | 3 - Average | Evidence of prior roof leaks on section dodging. |
| Security System | | | | 3 - Average | |
| Technology Infrastructure | | | | 3 - Average | |

School Building Authority of West Virginia
 SBA Form 134 Data Collection Form
 Facility General Information Sheet

1 - Facility General Information Worksheet

| | | | |
|----------------|---------------------|--------------------------------|----------|
| LEA ID: | 039409 | Assessment Date: | 10/15/19 |
| County: | Kanawha | Total Gross Square Feet: | 75,766 |
| Facility Name: | Hayes Middle School | Original Year of Construction: | 1959 |

Energy Indexes

(List the total amount of each fuel source used for one year)

| Source (Units) | Consumption per Year | Conversion (BTU/Unit) | Total BTU |
|--------------------------|----------------------|-----------------------|---------------|
| Electric (Kilowatt-Hrs) | 707,200 | 3,412 | 2,413,065,408 |
| Natural Gas (MCF) --OR-- | 1,844 | 1,037,000 | 1,912,228,000 |
| Natural Gas (Decotherms) | | 1,000,000 | - |
| Coal (Tons) | | 24,000,000 | - |
| #2 Fuel Oil (Gallons) | | 138,874 | - |
| Propane (Pounds) | | 21,600 | - |
| Used Oil (Gallons) | | 125,000 | - |
| Wood Chips (Tons) | | 16,500,000 | - |
| Other (specify) | | | - |
| Amount: | | | |
| Units: | | | |

Total BTU: 4,325,293,408
 Energy Utilization Index (EUI): 57,088

Worksheet Links:

School Building Authority of West Virginia
 SBA Form 134 Data Collection Form
 Site Evaluation Sheet

| | | | |
|----------------|---------------------|--------------------------------|----------|
| LEA ID: | 039409 | Assessment Date: | 10/15/19 |
| County: | Kanawha | Total Gross Square Feet: | 75,766 |
| Facility Name: | Hayes Middle School | Original Year of Construction: | 1959 |

2 - Site Evaluation Worksheet

Site

| | |
|----------------------------------|-------|
| City or Rural: | Rural |
| Actual Acres: | 17.22 |
| Useable Acres: | 12.5 |
| Site adequate for expansion: | Yes |
| Are public parks/areas adjacent: | No |
| % site out of flood plain: | 84% |
| % site in flood plain: | 16% |

| | |
|-------------------------|-----------|
| Site Remarks: | |
| Overall Site Condition: | 3-Average |

Drainage

| | |
|-----------------------------|-----------|
| Drainage Remarks: | |
| Overall Drainage Condition: | 3-Average |

Parking

| | |
|-------------------------|-----------|
| Parking Adequately Lit: | No |
| Adequacy of Parking: | 3-Average |

| | |
|----------------------------|-----------|
| Parking Remarks: | |
| Overall Parking Condition: | 3-Average |

Bus Loading

| | |
|-----------------------|-----|
| Bus Loading Adequate: | Yes |
|-----------------------|-----|

| | |
|--------------------------------|-----------|
| Bus Loading Remarks: | |
| Overall Bus loading Condition: | 3-Average |

Access Roads

| | |
|------------------------------------|-----------|
| Adequacy of On-Site Access Roads: | 3-Average |
| Adequacy of Off-Site Access Roads: | 3-Average |

Access Roads Remarks:

| |
|--|
| |
|--|

Overall Access Road Condition:

| |
|-----------|
| 3-Average |
|-----------|

Playfields/Playcourts

Adequacy of Playfields:

| |
|-----------|
| 3-Average |
|-----------|

Adequacy of Playcourts:

| |
|-----------------|
| 2-Below Average |
|-----------------|

| |
|--|
| |
|--|

Playfields/Playcourts Remarks:

Overall Playfield/Playcourts Condition:

| |
|-----------|
| 3-Average |
|-----------|

Site Utilities

Electrical Services:

Phase:

| |
|---|
| 3 |
|---|

Voltage:

| |
|---------|
| 480/277 |
|---------|

Amps:

| |
|-----|
| 600 |
|-----|

Electric Utility Company:

| |
|-----|
| AEP |
|-----|

Main Service Feed into Building:

| |
|-------------|
| Underground |
|-------------|

| |
|--|
| |
|--|

Electrical Service Remarks:

| |
|---|
| Enters Building 1, also serves Building 2 |
|---|

Overall Electrical Service Condition:

| |
|-----------|
| 3-Average |
|-----------|

Fuel Sources:

Natural Gas:

| |
|-----|
| Yes |
|-----|

Coal:

| |
|--|
| |
|--|

Fuel Oils:

| |
|--|
| |
|--|

Propane:

| |
|--|
| |
|--|

Other (Specify):

| |
|--|
| |
|--|

Fuel Line Size (inches):

| |
|----|
| 8" |
|----|

Fuel Utility Company:

| |
|-----------------|
| Mountaineer Gas |
|-----------------|

| |
|--|
| |
|--|

Fuel Sources Remarks:

| |
|---|
| Enters Building 2, also serves Building 1 |
|---|

Overall Fuel Sources Condition:

| |
|-----------|
| 3-Average |
|-----------|

Water Sources:

Public:

| |
|-----|
| Yes |
|-----|

Well:

| |
|--|
| |
|--|

Water Line Size (inches):

| |
|----|
| 4" |
|----|

Water Utility Company:

| |
|------------------------------|
| West Virginia American Water |
|------------------------------|

| |
|--|
| |
|--|

Water Sources Remarks:

| |
|---|
| Enters Building 2, also serves Building 1 |
|---|

Overall Water Sources Condition:

| |
|-----------|
| 3-Average |
|-----------|

Sewage Systems:

Public:

Septic:

Other (Specify):

Public Service District (PSD):

Sewage System Remarks:

Overall Sewage System Condition:

School Building Authority of West Virginia
 SBA Form 134 Data Collection Form
 Building Component Evaluation Sheet

| | | | |
|----------------|---------------------|--------------------------------|----------|
| LEA ID: | 039409 | Assessment Date: | 10/15/19 |
| County: | Kanawha | Total Gross Square Feet: | 75,766 |
| Facility Name: | Hayes Middle School | Original Year of Construction: | 1959 |

3 - Building Component Evaluation Worksheet

Building Structures:

Type:

| | |
|-------------|--|
| Steel Frame | |
| | |

Building Structures Remarks:

Overall Building Structure Condition:

| |
|-----------|
| 3-Average |
|-----------|

Floor Structures:

Steel Joist/Concrete (floor area SF):

| |
|--|
| |
|--|

Wood Joists (floor area SF):

| |
|--|
| |
|--|

Slab on Grade (floor area SF):

| |
|--------|
| 75,767 |
|--------|

Other (specify) / Floor area SF:

| | |
|--|--|
| | |
| | |

Floor Structure Remarks:

Overall Floor Structure Condition:

| |
|-----------------|
| 4-Above Average |
|-----------------|

Roof:

Roof Structure:

| | |
|----------------------------------|-------------|
| Other (Specify in cell to right) | Steel Beams |
| | |

Roof Structures Remarks:

Overall Roof Condition:

| |
|-----------|
| 3-Average |
|-----------|

Building Systems:

The systems below are addressed in the FCA data collection tool.

- Roof Coverings
- Wall Finishes
- Ceiling Finishes
- Floor Finishes
- Doors
- Windows
- HVAC
- Electrical
- Fire Alarm



Technology Infrastructure:

Sufficient Electrical Capacity:

| |
|-----|
| Yes |
|-----|

| |
|-----------|
| 3-Average |
|-----------|

Power Receptacles Availability:

| |
|-----|
| Yes |
|-----|

| |
|-----------|
| 3-Average |
|-----------|

| | | |
|--|-----------|-----------------|
| ID Network Type (if available): | Yes | 3-Average |
| Inventory Records Hardware | Yes | 4-Above Average |
| Other (specify): | | |
| Deficiencies: | | |
| Technology Remarks: | | |
| Overall Technology Infrastructure Cond | 3-Average | |

Technology Assessment:

| | |
|-------------------------------|-----------------|
| Teacher Training: | 4-Above Average |
| Software Use: | 4-Above Average |
| Purchasing Practices: | 4-Above Average |
| Network Administration: | 4-Above Average |
| Inventory Records | 4-Above Average |
| Other (specify): | |
| Deficiencies: | |
| Technology Remarks: | |
| Overall Technology Condition: | 4-Above Average |

School Access Safety Audit:

| | |
|----------------------------------|--|
| Planning: | |
| Deterrence: | |
| Detection: | |
| Delay: | |
| Communication: | |
| Evacuation: | |
| Safety Remarks: | |
| Overall Access Safety Condition: | |

School Building Authority of West Virginia
 SBA Form 134 Data Collection Form
 Facility Spaces Evaluation / Utilization Analysis Sheet

LEA ID: 039409 Assessment Date: 4/3/2013
 County: Kanawha Total Gross Square Feet: 75,766
 Facility Name: Hayes Middle School Original Year of Construction: 1959

| Classroom Type | Grade Config | | Age of Facility | No. of Renovations | Square Ft | Portables | Location (City, St) | Utilization Calculation |
|------------------------------|--------------|---|-----------------|--------------------|-----------|-----------|---------------------|--------------------------------|
| | 6-8 | 8 | | | | | | |
| Pre-Kindergarten (Full Day) | | | 61 | | 75,766 | 0 | St. Albans, WV | Current Enrollment 428 |
| Kindergarten (Full Day) | | | | | | | | Total Program Capacity 725 |
| General Purpose Classroom | 17 | | | | | | | |
| Computer Lab | 3 | | | | | | | |
| Art Lab | 1 | | | | | | | |
| Music Classroom | 1 | | | | | | | |
| Special Ed Pull-out | n/a | | | | | | | |
| Special Ed Level 1: (PK-5) | | | | | | | | |
| Special Ed Level 1: (6-12) | | | | | | | | |
| Special Ed Level 2: (PK-12) | | | | | | | | |
| Special Ed Level 3: (PK-12) | | | | | | | | |
| Special Education Classroom | 5 | | | | | | | |
| Technical Education / Voc Ag | 1 | | | | | | | Utilization Calculation 59% |
| Physical Education | n/a | | | | | | | Desirable Utilization 85% |
| Science Classroom/Lab | 3 | | | | | | | |
| Business Education | n/a | | | | | | | |
| Family Liv/Cons Economics | 0 | | | | | | | |
| Totals | 32 | 0 | 0 | | | | | Difference -26% |

Complete ONLY the column below associated with the highest grade level for this school.

School Building Authority of West Virginia
SBA Form 134 Data Collection Form
School Improvement Cost Summary Sheet

| | | | |
|-----------------------------|---------------------|--------------------------------|----------|
| LEA ID: | 039409 | Assessment Date: | 10/15/19 |
| County: | Kanawha | Total Gross Square Feet: | 75766 |
| Facility Name: | Hayes Middle School | Original Year of Construction: | 1959 |
| Design Capacity Enrollment: | 725 | | |

Please note, the current-year costs shown below are intended to provide a Rough Order of Magnitude (ROM) estimate of costs. While they are appropriate for high-level capital forecasting, they should not be relied upon for determining specific project funding values. Actual project costs will likely deviate from the presented values due to a variety of factors including, but not limited to, hard and soft cost fluctuations and the actual date of construction for the intended project. Therefore, detailed cost estimates are recommended to validate funding requirements prior to obligating funds for facility replacement or renovation.

| Improvement Item | Unit | Quantity | Unit Cost | Item Cost | Remarks |
|-------------------------------|--------|----------|-----------|-------------|---------|
| 1. Site Work | | | | | |
| Land Acquisition | Acres | | | \$ - | |
| Excavation/Grade | CUB FT | | | \$ - | |
| Drainage | LIN FT | | | \$ - | |
| Walks (6 ft wide) | SQ FT | | | \$ - | |
| Parking | SQ FT | | | \$ - | |
| Bus Loading | SQ FT | | | \$ - | |
| Roads | SQ FT | | | \$ - | |
| Playing Fields | SQ FT | | | \$ - | |
| Other (Describe in 'Remarks') | | | | \$ - | |
| Other (Describe in 'Remarks') | | | | \$ - | |
| Other (Describe in 'Remarks') | | | | \$ - | |
| Sub-Total | | | | \$ - | |

| Improvement Item | Unit | Quantity | Unit Cost | Item Cost | Remarks |
|---------------------------------|----------|----------|--------------|---------------------|---------|
| 2. Renovations, Exterior | | | | | |
| Wall Structure | SQ FT | | | \$ - | |
| Floor Structure | SQ FT | | | \$ - | |
| Roof Structure | SQ FT | | | \$ - | |
| Wall Facing | SQ FT | | | \$ - | |
| Windows | EACH | | | \$ - | |
| Doors/Frames | EACH | | | \$ - | |
| Roofing | SQ FT | | | \$ - | |
| Coping/Parapet | LIN FT | | | \$ - | |
| Painting | SQ FT | | | \$ - | |
| Other (Describe in 'Remarks') | LUMP SUM | 1 | \$ 35,000.00 | \$ 35,000.00 | WINDOWS |
| Other (Describe in 'Remarks') | | | | \$ - | |
| Other (Describe in 'Remarks') | | | | \$ - | |
| Sub-Total | | | | \$ 35,000.00 | |

| Improvement Item | Unit | Quantity | Unit Cost | Item Cost | Remarks |
|---------------------------------|-------|----------|-----------|------------------------|----------|
| 3. Renovations, Interior | | | | | |
| Floor Covering | SQ FT | | | \$ - | |
| Patch & Painting | SQ FT | | | \$ - | |
| Ceiling Finish | SQ FT | | | \$ - | |
| Plumbing | SQ FT | | | \$ - | |
| Heating/Ventilating | SQ FT | 75,766 | \$ 40.00 | \$ 3,030,640.00 | |
| Air Conditioning | SQ FT | | | \$ - | |
| Lighting | SQ FT | | | \$ - | |
| Wiring | SQ FT | | | \$ - | |
| Fire Alarm | SQ FT | 75,766 | \$ 5.00 | \$ 378,830.00 | |
| Communication System | SQ FT | | | \$ - | |
| Technology | SQ FT | | | \$ - | |
| Interior Doors | EACH | | | \$ - | |
| Other (Describe in 'Remarks') | SQ FT | 75,766 | \$ 7.00 | \$ 530,362.00 | CONTROLS |
| Other (Describe in 'Remarks') | | | | \$ - | |
| Other (Describe in 'Remarks') | | | | \$ - | |
| Sub-Total | | | | \$ 3,939,832.00 | |

| Improvement Item | Unit | Quantity | Unit Cost | Item Cost | Remarks |
|---|-------|----------|-----------|-----------|---------|
| 4. Building Additions Including Furniture, Furnishings & Equipment | | | | | |
| Administration (ES, MS, HS) | SQ FT | | | \$ - | |
| Student Services (ES, MS, HS) | SQ FT | | | \$ - | |

| | | | | | |
|--|-------|---|--|-------------|--|
| Kindergarten (ES) | SQ FT | | | \$ - | |
| Primary (ES) | SQ FT | | | \$ - | |
| Media Center (ES) | SQ FT | | | \$ - | |
| Basic (MS, HS) | SQ FT | | | \$ - | |
| Reading (MS, HS) | SQ FT | | | \$ - | |
| Health Education (MS, HS) | SQ FT | | | \$ - | |
| Computer Lab (ES, MS, HS) | SQ FT | | | \$ - | |
| Inst. Mat. Center (MS, HS) | SQ FT | | | \$ - | |
| Home Economics (MS, HS) | SQ FT | | | \$ - | |
| Art (ES, MS, HS) | SQ FT | | | \$ - | |
| Ind. Technology (MS, HS) | SQ FT | | | \$ - | |
| Music (ES, MS, HS) | SQ FT | | | \$ - | |
| Physical Education (MS, HS) | SQ FT | | | \$ - | |
| Auditorium (MS, HS) | SQ FT | | | \$ - | |
| Special Education (ES, MS, HS) | SQ FT | | | \$ - | |
| Multi-Purpose (ES) | SQ FT | | | \$ - | |
| Kitchen (ES, MS, HS) | SQ FT | | | \$ - | |
| Dining (MS, HS) | SQ FT | | | \$ - | |
| Business Education (MS) | SQ FT | | | \$ - | |
| Co-Op Education (MS) | SQ FT | | | \$ - | |
| Drivers Education (MS) | SQ FT | | | \$ - | |
| Staff/Faculty (ES, MS, HS) | SQ FT | | | \$ - | |
| Toilets/Fixtures (ES, MS, HS) | SQ FT | | | \$ - | |
| Storage General (ES, MS, HS) | SQ FT | | | \$ - | |
| Storage Instructional (ES, MS, HS) | SQ FT | | | \$ - | |
| Custodial (ES, MS, HS) | SQ FT | | | \$ - | |
| Mechanical (MS, HS) | SQ FT | | | \$ - | |
| Other (Describe in 'Remarks') | | | | \$ - | |
| Other (Describe in 'Remarks') | | | | \$ - | |
| Other (Describe in 'Remarks') | | | | \$ - | |
| Subtotal of Building Additions (SQ FT) | | 0 | | \$ - | |
| Circulation | 30% | 0 | | \$ - | |
| Sub-Total | | | | \$ - | |

| | Unit | Quantity | Unit Cost | Item Cost | Remarks |
|-------------------------------|-------|----------|-----------|-------------|---------|
| 5. Special Construction | | | | | |
| Elevator | EACH | | | \$ - | |
| Sprinkler Systems | SQ FT | | | \$ - | |
| Kitchen Equipment | ALL | | | \$ - | |
| Waste Treatment | EACH | | | \$ - | |
| Other (Describe in 'Remarks') | | | | \$ - | |
| Other (Describe in 'Remarks') | | | | \$ - | |
| Other (Describe in 'Remarks') | | | | \$ - | |
| Sub-Total | | | | \$ - | |

| | Quantity | Unit Cost | Item Cost | Remarks |
|---------------------------------------|----------|-----------|------------------------|---------|
| 6. Other Special Costs | | | | |
| | | | \$ - | |
| | | | \$ - | |
| | | | \$ - | |
| Sub-Total | | | \$ - | |
| Sub-Total of Items 1 through 6 | | | \$ 3,974,832.00 | |

| | % | Quantity | Item Cost | Remarks |
|-----------------------------------|------|----------------|----------------------|---------|
| 7. Architectural/Engineering Fees | | | | |
| New Construction | | | \$ - | |
| Renovations | 7.0% | \$3,974,832.00 | \$ 278,238.24 | |
| Sub-Total | | | \$ 278,238.24 | |

| | Unit | Quantity | Unit Cost | Item Cost | Remarks |
|-------------------------------|------|----------|-----------|-------------|---------|
| 8. Miscellaneous | | | | | |
| Survey | EACH | | | \$ - | |
| Soil Inv. | EACH | | | \$ - | |
| Other (Describe in 'Remarks') | | | | \$ - | |
| Other (Describe in 'Remarks') | | | | \$ - | |
| Other (Describe in 'Remarks') | | | | \$ - | |
| Sub-Total | | | | \$ - | |

| | % | Quantity | Item Cost | Remarks |
|------------------|---|----------|-----------|---------|
| 9. Contingencies | | | | |
| New Construction | | | \$ - | |

| | | | | |
|------------------|------|----------------|----------------------|--|
| Renovations | 6.0% | \$3,974,832.00 | \$ 238,489.92 | |
| Sub-Total | | | \$ 238,489.92 | |

| | | | | |
|---------------------------------|------------------------|--|--|--|
| Grand Total Project Cost | \$ 4,491,560.16 | | | |
|---------------------------------|------------------------|--|--|--|

Worksheet Links:

- [Campus Information](#)
- [Building 1](#)
- [Building 2](#)
- [Building 3](#)
- [Building 4](#)

| Reference Data from Prior Sheets (for WVDE Use Only): | |
|---|--------|
| Energy Utilization Index: | 57,088 |
| Current Enrollment: | 428 |
| Program Capacity: | 725 |
| Utilization Calculation: | 59% |
| Building(s) in Floodplain/Floodway: | 0 |

Kanawha County Schools CEFP 2020100.016.2 Translating Educational Needs-Building Review

Hayes Middle School

Describe Existing Facility:

Hayes Middle School is a one-story masonry wall bearing and steel frame facility constructed in 1959 with an addition in 1992. The building contains 75,110 SF, housing classrooms, computer labs, art studio, music spaces, media center, resource spaces, physical education/gym, food service spaces with adjacent dining/commons, and administrative/pupil services suite. There are two portable buildings in use on the site.

The building is fully sprinkled and served by public water and sanitary systems. The building is considered to be in poor condition.

Describe Existing Facility Site:

Approximate 17.22-acre site North of River Lake Estates across Coal River fronting on Strawberry Road. Roads are adequate and are separated from pedestrian traffic. Bus loading is adequate and is separated from vehicle traffic. Site storm drainage is adequate. On-site parking is adequate. Parking areas need resurfaced. Separate parent pickup area is not provided. The site further supports paved and grass playfields including football field, tennis course, and softball fields. The neighborhood is residential.

Recommendations for Future Use of Existing Facility:

Hayes Middle School will be closed and a new St. Albans area (Hayes-McKinley) Middle School will be constructed. If the school is not closed, the following improvements are required for Hayes Middle School:

- Academic building 1: (Boiler and Pumps located in Building 2): Classrooms: HW Unit Ventilators and Window AC Units (R-22); 2 Indoor Air Handlers with HW Coils serve larger areas.
- Academic building 1: Offices have HW Convectors and Window AC Units. Heating system is 60 years old and has reached the end of useful life.
- Technical building 2: Predominantly Rooftop Units, either Gas/DX or Electric/DX. Vintages are mixed, roughly half are R-22 (10+ years old) and half are R-410A (less than 10 years old).
- Technical building 2: Additionally, there are several HW Unit Ventilators and Window AC Units. Note: The Boilers and Pumps are located in this building, though noted as not present to facilitate FCA program. Systems will reach the end of useful life by or before 2030.
- The adequacy of play courts are below average.
- Multiple free-standing buildings should be connected.

Cost Estimates for Recommendations:

The cost for the improvements at Hayes Middle School is \$4,491,560.16. The detailed estimate contained on SBA Form 134 is attached.

School Building Authority of West Virginia
SBA Form 134 Data Collection Form
School Improvement Cost Summary Sheet

| | | | |
|-----------------------------|---------------------|--------------------------------|----------|
| LEA ID: | 039409 | Assessment Date: | 10/15/19 |
| County: | Kanawha | Total Gross Square Feet: | 75766 |
| Facility Name: | Hayes Middle School | Original Year of Construction: | 1959 |
| Design Capacity Enrollment: | 725 | | |

Please note, the current-year costs shown below are intended to provide a Rough Order of Magnitude (ROM) estimate of costs. While they are appropriate for high-level capital forecasting, they should not be relied upon for determining specific project funding values. Actual project costs will likely deviate from the presented values due to a variety of factors including, but not limited to, hard and soft cost fluctuations and the actual date of construction for the intended project. Therefore, detailed cost estimates are recommended to validate funding requirements prior to obligating funds for facility replacement or renovation.

| Improvement Item | Unit | Quantity | Unit Cost | Item Cost | Remarks |
|-------------------------------|--------|----------|-----------|-----------|---------|
| 1. Site Work | | | | | |
| Land Acquisition | Acres | | | \$ - | |
| Excavation/Grade | CUB FT | | | \$ - | |
| Drainage | LIN FT | | | \$ - | |
| Walks (6 ft wide) | SQ FT | | | \$ - | |
| Parking | SQ FT | | | \$ - | |
| Bus Loading | SQ FT | | | \$ - | |
| Roads | SQ FT | | | \$ - | |
| Playing Fields | SQ FT | | | \$ - | |
| Other (Describe in 'Remarks') | | | | \$ - | |
| Other (Describe in 'Remarks') | | | | \$ - | |
| Other (Describe in 'Remarks') | | | | \$ - | |
| Sub-Total | | | | \$ - | |

| Improvement Item | Unit | Quantity | Unit Cost | Item Cost | Remarks |
|---------------------------------|----------|----------|--------------|--------------|---------|
| 2. Renovations, Exterior | | | | | |
| Wall Structure | SQ FT | | | \$ - | |
| Floor Structure | SQ FT | | | \$ - | |
| Roof Structure | SQ FT | | | \$ - | |
| Wall Facing | SQ FT | | | \$ - | |
| Windows | EACH | | | \$ - | |
| Doors/Frames | EACH | | | \$ - | |
| Roofing | SQ FT | | | \$ - | |
| Coping/Parapet | LIN FT | | | \$ - | |
| Painting | SQ FT | | | \$ - | |
| Other (Describe in 'Remarks') | LUMP SUM | 1 | \$ 35,000.00 | \$ 35,000.00 | WINDOWS |
| Other (Describe in 'Remarks') | | | | \$ - | |
| Other (Describe in 'Remarks') | | | | \$ - | |
| Sub-Total | | | | \$ 35,000.00 | |

| Improvement Item | Unit | Quantity | Unit Cost | Item Cost | Remarks |
|---------------------------------|-------|----------|-----------|-----------------|----------|
| 3. Renovations, Interior | | | | | |
| Floor Covering | SQ FT | | | \$ - | |
| Patch & Painting | SQ FT | | | \$ - | |
| Ceiling Finish | SQ FT | | | \$ - | |
| Plumbing | SQ FT | | | \$ - | |
| Heating/Ventilating | SQ FT | 75,766 | \$ 40.00 | \$ 3,030,640.00 | |
| Air Conditioning | SQ FT | | | \$ - | |
| Lighting | SQ FT | | | \$ - | |
| Wiring | SQ FT | | | \$ - | |
| Fire Alarm | SQ FT | 75,766 | \$ 5.00 | \$ 378,830.00 | |
| Communication System | SQ FT | | | \$ - | |
| Technology | SQ FT | | | \$ - | |
| Interior Doors | EACH | | | \$ - | |
| Other (Describe in 'Remarks') | SQ FT | 75,766 | \$ 7.00 | \$ 530,362.00 | CONTROLS |
| Other (Describe in 'Remarks') | | | | \$ - | |
| Other (Describe in 'Remarks') | | | | \$ - | |
| Sub-Total | | | | \$ 3,939,832.00 | |

| Improvement Item | Unit | Quantity | Unit Cost | Item Cost | Remarks |
|---|-------|----------|-----------|-----------|---------|
| 4. Building Additions Including Furniture, Furnishings & Equipment | | | | | |
| Administration (ES, MS, HS) | SQ FT | | | \$ - | |
| Student Services (ES, MS, HS) | SQ FT | | | \$ - | |

| | | | | | |
|--|-------|---|--|-------------|--|
| Kindergarten (ES) | SQ FT | | | \$ - | |
| Primary (ES) | SQ FT | | | \$ - | |
| Media Center (ES) | SQ FT | | | \$ - | |
| Basic (MS, HS) | SQ FT | | | \$ - | |
| Reading (MS, HS) | SQ FT | | | \$ - | |
| Health Education (MS, HS) | SQ FT | | | \$ - | |
| Computer Lab (ES, MS, HS) | SQ FT | | | \$ - | |
| Inst. Mat. Center (MS, HS) | SQ FT | | | \$ - | |
| Home Economics (MS, HS) | SQ FT | | | \$ - | |
| Art (ES, MS, HS) | SQ FT | | | \$ - | |
| Ind. Technology (MS, HS) | SQ FT | | | \$ - | |
| Music (ES, MS, HS) | SQ FT | | | \$ - | |
| Physical Education (MS, HS) | SQ FT | | | \$ - | |
| Auditorium (MS, HS) | SQ FT | | | \$ - | |
| Special Education (ES, MS, HS) | SQ FT | | | \$ - | |
| Multi-Purpose (ES) | SQ FT | | | \$ - | |
| Kitchen (ES, MS, HS) | SQ FT | | | \$ - | |
| Dining (MS, HS) | SQ FT | | | \$ - | |
| Business Education (MS) | SQ FT | | | \$ - | |
| Co-Op Education (MS) | SQ FT | | | \$ - | |
| Drivers Education (MS) | SQ FT | | | \$ - | |
| Staff/Faculty (ES, MS, HS) | SQ FT | | | \$ - | |
| Toilets/Fixtures (ES, MS, HS) | SQ FT | | | \$ - | |
| Storage General (ES, MS, HS) | SQ FT | | | \$ - | |
| Storage Instructional (ES, MS, HS) | SQ FT | | | \$ - | |
| Custodial (ES, MS, HS) | SQ FT | | | \$ - | |
| Mechanical (MS, HS) | SQ FT | | | \$ - | |
| Other (Describe in 'Remarks') | | | | \$ - | |
| Other (Describe in 'Remarks') | | | | \$ - | |
| Other (Describe in 'Remarks') | | | | \$ - | |
| Subtotal of Building Additions (SQ FT) | | 0 | | \$ - | |
| Circulation | 30% | 0 | | \$ - | |
| Sub-Total | | | | \$ - | |

| | Unit | Quantity | Unit Cost | Item Cost | Remarks |
|-------------------------------|-------|----------|-----------|-------------|---------|
| Elevator | EACH | | | \$ - | |
| Sprinkler Systems | SQ FT | | | \$ - | |
| Kitchen Equipment | ALL | | | \$ - | |
| Waste Treatment | EACH | | | \$ - | |
| Other (Describe in 'Remarks') | | | | \$ - | |
| Other (Describe in 'Remarks') | | | | \$ - | |
| Other (Describe in 'Remarks') | | | | \$ - | |
| Sub-Total | | | | \$ - | |

| | Quantity | Unit Cost | Item Cost | Remarks |
|---------------------------------------|----------|-----------|------------------------|---------|
| 6. Other Special Costs | | | \$ - | |
| | | | \$ - | |
| | | | \$ - | |
| Sub-Total | | | \$ - | |
| Sub-Total of Items 1 through 6 | | | \$ 3,974,832.00 | |

| | % | Quantity | Item Cost | Remarks |
|-----------------------------------|------|----------------|----------------------|---------|
| 7. Architectural/Engineering Fees | | | \$ - | |
| New Construction | | | \$ - | |
| Renovations | 7.0% | \$3,974,832.00 | \$ 278,238.24 | |
| Sub-Total | | | \$ 278,238.24 | |

| | Unit | Quantity | Unit Cost | Item Cost | Remarks |
|-------------------------------|------|----------|-----------|-------------|---------|
| 8. Miscellaneous | | | | \$ - | |
| Survey | EACH | | | \$ - | |
| Soil Inv. | EACH | | | \$ - | |
| Other (Describe in 'Remarks') | | | | \$ - | |
| Other (Describe in 'Remarks') | | | | \$ - | |
| Other (Describe in 'Remarks') | | | | \$ - | |
| Sub-Total | | | | \$ - | |

| | % | Quantity | Item Cost | Remarks |
|------------------|---|----------|-----------|---------|
| 9. Contingencies | | | \$ - | |
| New Construction | | | \$ - | |

| | | | |
|------------------|------|----------------|----------------------|
| Renovations | 6.0% | \$3,974,832.00 | \$ 238,489.92 |
| Sub-Total | | | \$ 238,489.92 |

| | | | |
|---------------------------------|------------------------|--|--|
| Grand Total Project Cost | \$ 4,491,560.16 | | |
|---------------------------------|------------------------|--|--|

Worksheet Links:

- [Campus Information](#)
- [Building 1](#)
- [Building 2](#)
- [Building 3](#)
- [Building 4](#)

| Reference Data from Prior Sheets (for WVDE Use Only): | |
|---|--------|
| Energy Utilization Index: | 57,088 |
| Current Enrollment: | 428 |
| Program Capacity: | 725 |
| Utilization Calculation: | 59% |
| Building(s) in Floodplain/Floodway: | 0 |

Appendix of Supporting Data

County Procedures

4. Proof of Public Hearings

Notice For:

McKinley Middle School
Hayes Middle School



HD MEDIA COMPANY, LLC

- The Herald-Dispatch • Charleston Gazette-Mail
- The Logan Banner • Williamson Daily News
- Coal Valley News • The Lincoln Journal
- The Lincoln Sentinel • The Putnam Herald
- The Wayne County News • Tri-State Weekly
- Pulse • The Parthenon (Marshall University)

P.O. Box 2017 Huntington, WV 25720 - 2017 • Phone: 304-348-1224

Advertising Invoice

KANAWHA CO BOARD OF ED/TRSR
 200 ELIZABETH ST
 ATTN: KIM HARPER
 CHARLESTON, WV 25311

Acct#:61273
 Ad#:182091
 Phone#:304-348-6691
 Date:09/10/2024

Salesperson: Janice Alston

Classification: Legal Notices

Ad Size: 1.0 x 141.0

Advertisement Information:

| Description | Start | Stop | Ins. | Cost/Day | Total |
|-------------------------|------------|------------|------|----------|--------|
| Charleston Gazette Mail | 09/10/2024 | 10/01/2024 | 4 | 73.56 | 294.23 |

Payment Information:

| | | |
|--------------|---------------|----------------|
| Date: | Order# | Type |
| 09/04/2024 | 182091 | BILLED ACCOUNT |

Total Amount: 294.23

Amount Due: 294.23

Attention: Please return the top portion of this invoice with your payment including account and ad number.

Ad Copy

**NOTICE OF
PUBLIC HEARINGS**

**KANAWHA COUNTY
SCHOOLS
W. VA. 18-5-13A
W. VA. BOARD OF
EDUCATION
POLICY 6204**

DATE and TIME:
Wednesday, October 9,
2024, at 6:00 p.m.

**Sign in between
5:00 and 5:55 p.m.
to speak**

**ALTERNATIVE DATE and
TIME:** If, in the event of
inclement weather or
other factors beyond
the control of the board,
the hearing cannot take
place at the date and
time set forth above, the
hearing will be held on
Tuesday, October 29,
2024, at 6:00 p.m.

PLACE: Saint Albans
High School Auditorium,
2100 Kanawha Terrace,
St. Albans, WV 25177.
The hearing location is
subject to change if, at
the time the meeting is
called to order, it is
determined that the
meeting location is of
insufficient size to ac-
commodate those wish-
ing to attend.

The hearings may not
continue beyond 11:00
p.m. In the event the
hearings are not conclu-
ded by 11:00 p.m., the
hearing may recess, to
continue on dates desig-
nated and announced by
the board just prior to
the hearing recess, to
be continued day to day
until concluded.

**Proposed Action of
the Board of Educa-
tion of the County of
Kanawha, West Vir-
ginia:**

**McKinley Middle
School** Close and
transfer of students to
Hayes Middle School.

Hearing Procedures:
A representative of Ka-
nawha County Schools
will provide an oral
summary of the reasons
and supporting data in
connection with the pro-
posed action of the
Board. For a period of
fifty five minutes prior to
the commencement of
the public hearings, per-
sons may sign a regis-
ter for the purpose of
making statements, of-
fering testimony and
questioning school offi-
cials. Each school com-
munity will have separat-
e/individualized times to
speak regarding their
school's information.
The public hearing for

Each school community will have separate/individualized times to speak regarding their school's information. The public hearings for the closing of McKinley Middle School will start at 6:00 p.m. and Hayes Middle School will follow after with separate sign in sheets. Each person shall be limited to three/five minutes. Written statements may be submitted in lieu of oral statements or testimony and must be submitted prior to the conclusion of the hearing. Any written statement will be given full consideration before the board takes any final action.

Reasons and supporting data available for public inspection: Written reasons and supporting data in connection with the proposed action of the Board are available for public inspection beginning September 4, 2024 through October 9, 2024, between the hours of 7:30 a.m. and 4:00 p.m. in the Office of the Superintendent of Kanawha County Schools located in Room 222, 200 Elizabeth Street, Charleston, West Virginia. The reasons and the supporting data in connection with the proposed actions are also available for inspection at McKinley Middle School and Hayes Middle School.

LC 182091
09 10, 17, 24/
10 01, 2024

| Legal Notice | Legal Notice | Legal Notice | Legal Notice | Legal Notice |
|---|---|---|---|---|
| <p>OFFICE FOR THE COUNTY OF KANAWHA The following day-to-day work schedule for the County of Kanawha is hereby announced: Proposed Action of the Board of the County of Kanawha: The Board of the County of Kanawha, at its meeting on October 1, 2024, has adopted the following resolution: Motion: That the Board of the County of Kanawha do hereby resolve that the County of Kanawha shall be divided into five (5) districts for the purpose of electing members to the Board of the County of Kanawha. Resolution: The Board of the County of Kanawha do hereby resolve that the County of Kanawha shall be divided into five (5) districts for the purpose of electing members to the Board of the County of Kanawha. Effective Date: This resolution shall become effective on the date of its adoption. Witness my hand and the seal of the County of Kanawha this 1st day of October, 2024. _____ County Clerk _____ County Auditor</p> | <p>Notice of Public Hearing The Kanawha County Commission will hold a public hearing on the proposed closure of McKinley Middle School on October 1, 2024, at 10:00 AM in the Board Room of the Kanawha County Administration Center, 100 Kanawha Street, Charleston, West Virginia. The purpose of the hearing is to receive public input on the proposed closure of McKinley Middle School and to discuss the impact of the closure on the community. The Commission will consider the proposed closure of McKinley Middle School and any other matters that may come before it. Public input will be accepted from 10:00 AM to 11:00 AM. The Commission will meet from 11:00 AM to 12:00 PM. If you have any questions or need more information, please contact the Kanawha County Administration Center at (304) 762-2000. Witness my hand and the seal of the County of Kanawha this 1st day of October, 2024. _____ County Clerk _____ County Auditor</p> | <p>Notice of Public Hearing The Kanawha County Commission will hold a public hearing on the proposed closure of McKinley Middle School on October 1, 2024, at 10:00 AM in the Board Room of the Kanawha County Administration Center, 100 Kanawha Street, Charleston, West Virginia. The purpose of the hearing is to receive public input on the proposed closure of McKinley Middle School and to discuss the impact of the closure on the community. The Commission will consider the proposed closure of McKinley Middle School and any other matters that may come before it. Public input will be accepted from 10:00 AM to 11:00 AM. The Commission will meet from 11:00 AM to 12:00 PM. If you have any questions or need more information, please contact the Kanawha County Administration Center at (304) 762-2000. Witness my hand and the seal of the County of Kanawha this 1st day of October, 2024. _____ County Clerk _____ County Auditor</p> | <p>Notice of Public Hearing The Kanawha County Commission will hold a public hearing on the proposed closure of McKinley Middle School on October 1, 2024, at 10:00 AM in the Board Room of the Kanawha County Administration Center, 100 Kanawha Street, Charleston, West Virginia. The purpose of the hearing is to receive public input on the proposed closure of McKinley Middle School and to discuss the impact of the closure on the community. The Commission will consider the proposed closure of McKinley Middle School and any other matters that may come before it. Public input will be accepted from 10:00 AM to 11:00 AM. The Commission will meet from 11:00 AM to 12:00 PM. If you have any questions or need more information, please contact the Kanawha County Administration Center at (304) 762-2000. Witness my hand and the seal of the County of Kanawha this 1st day of October, 2024. _____ County Clerk _____ County Auditor</p> | <p>Notice of Public Hearing The Kanawha County Commission will hold a public hearing on the proposed closure of McKinley Middle School on October 1, 2024, at 10:00 AM in the Board Room of the Kanawha County Administration Center, 100 Kanawha Street, Charleston, West Virginia. The purpose of the hearing is to receive public input on the proposed closure of McKinley Middle School and to discuss the impact of the closure on the community. The Commission will consider the proposed closure of McKinley Middle School and any other matters that may come before it. Public input will be accepted from 10:00 AM to 11:00 AM. The Commission will meet from 11:00 AM to 12:00 PM. If you have any questions or need more information, please contact the Kanawha County Administration Center at (304) 762-2000. Witness my hand and the seal of the County of Kanawha this 1st day of October, 2024. _____ County Clerk _____ County Auditor</p> |

REASONS AND SUPPORTING DATA FOR A PROPOSED SCHOOL CLOSURE

The following information provides the reasons and supporting data for the proposed closure of McKinley Middle School. This information was presented to the Kanawha County Commission on October 1, 2024.

Reasons for Closure:

- Enrollment Decline:** McKinley Middle School has experienced a significant decline in enrollment over the past five years, resulting in a sustained low level of student attendance. This decline is projected to continue, leading to an underutilized facility.
- Financial Sustainability:** Maintaining the current level of operation for a facility with declining enrollment is financially unsustainable. The cost of operating the school, including utilities, transportation, and maintenance, exceeds the revenue generated from the current enrollment.
- Efficient Use of Resources:** Consolidating students into existing facilities allows for more efficient use of resources, including classrooms, staff, and transportation. This consolidation will help optimize the use of the county's educational facilities.
- Community Impact:** The closure of McKinley Middle School will have a positive impact on the community by reducing the need for additional transportation and allowing for the repurposing of the building for other community uses.

Supporting Data:

- Enrollment Data:** The following table shows the enrollment data for McKinley Middle School from 2019 to 2024. The enrollment has consistently declined, with a projected further decline in 2025.
- Financial Data:** The following table shows the financial data for McKinley Middle School from 2019 to 2024. The operating costs have increased significantly, while the revenue has decreased, leading to a growing deficit.
- Community Data:** The following table shows the community data for McKinley Middle School from 2019 to 2024. The number of households in the area has decreased, and the population has declined, supporting the need for consolidation.

Conclusion: The proposed closure of McKinley Middle School is a necessary and responsible action to ensure the financial sustainability and efficient use of resources of the Kanawha County Public Schools. The supporting data clearly demonstrates the need for consolidation and the positive impact that this closure will have on the community.

Ad Number 182091

Affidavit of Legal Publication and Posting

STATE OF WEST VIRGINIA

COUNTY OF Kanawha, TO-WIT

I Janice Alston, Classified Advertising

Representative of the The Charleston Gazette-Mail, a newspaper

published in the county of Kanawha, West Virginia, hereby

certify that the annexed publication was inserted in said

newspaper The Charleston Gazette-Mail.

The cost of publishing said annexed advertisement

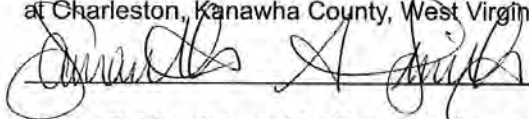
as aforesaid was \$ 294.23

Commencing On: 09/10/2024

Ending On: 10/01/2024

Given under my hand this day 10/01/2024

Sworn to and subscribed before me 10/01/2024
at Charleston, Kanawha County, West Virginia



Notary Public of, in and for Kanawha County, West Virginia

MY COMMISSION EXPIRES: 2/14/2027



Appendix of Supporting Data

County Procedures

5. Proof of Public Hearings

Documentation For:

McKinley Middle School
Hayes Middle School



200 Elizabeth Street, Charleston, West Virginia 25311-2119 (304) 348-7732 Fax (304) 348-7735

-AGENDA-

SPECIAL SESSION

PUBLIC HEARING ON SCHOOL CLOSURE

(McKinley Middle School)

Wednesday, October 9, 2024, 6:00 p.m.

**St. Albans High School
2100 Kanawha Terrace
St. Albans, WV 25177**

- I. CALL TO ORDER**
- II. ADMINISTRATION'S PRESENTATION**
- III. SPEAKERS WHO HAVE SIGNED UP TO ADDRESS THE BOARD FROM MCKINLEY MIDDLE SCHOOL**
- IV. SPEAKERS WHO HAVE SIGNED UP TO ADDRESS THE BOARD FROM HAYES MIDDLE SCHOOL**

Board Agenda
October 9, 2024
Page 2

V. NEW BUSINESS

A. McKinley Middle School

Recommended Motion: I move the Board close McKinley Middle School at the end of the 2024-25 school year and merge students into Hayes Middle School, for the reasons stated and as described in the closure documents provided to the public.

(T. Williams)

VI. ESTABLISHMENT OF MEETING DATES

- A. Wednesday, October 9, 2024, 6:00 p.m.-Special Session (Closure Hearing for McKinley Middle School at St. Albans High School)
- B. Tuesday, October 15, 2024, 6:00 p.m.-Special Session (Closure Hearing for Belle Elementary at Riverside High School)
- C. Wednesday, October 16, 2024, 5:00 p.m.-Regular Session
- D. Thursday, October 17, 2024, 6:00 p.m.-Special Session (Closure Hearing for Mary Ingles Elementary at Riverside High School)
- E. Monday, October 21, 2024, 6:00 p.m.-Special Session (Closure Hearing for Malden Elementary at Riverside High School)
- F. Tuesday, October 22, 2024, 6:00 p.m.-Special Session (Closure Hearing for Midland Trail Elementary at Riverside High School)
- G. Monday, November 4, 2024, 4:00 p.m.-Special Session
- H. Thursday, November 21, 2024, 5:00 p.m.-Regular Session

NOTE: The above meetings of the Kanawha County Board of Education, unless otherwise indicated, will be held in the Board of Education Building, 200 Elizabeth Street, Charleston, WV.

VII. ADJOURNMENT

djl
10/7/24

Appendix of Supporting Data

County Procedures

6. Board Minutes

Board minutes indicating the action of the board to approve the closure:

PUBLIC HEARING ON THE CLOSURE OF MCKINLEY MIDDLE SCHOOL

SPEAKERS TO ADDRESS THE BOARD

FROM MCKINLEY MIDDLE

Wednesday, October 9, 2024

St. Albans High School

| | |
|-------|---------------------------------|
| ✓ 1. | Kevin Pennington |
| ✓ 2. | Jill Newman |
| ✓ 3. | Teresa Farley |
| ✓ 4. | Scott James |
| ✓ 5. | Wade Stansbury - Football Coach |
| ✓ 6. | Randall Byrnside |
| ✓ 7. | David Rucker |
| ✓ 8. | William Lowe |
| ✓ 9. | Trevor Morris |
| ✓ 10. | Jared A. Page |
| ✓ 11. | Dwight Rice |
| ✓ 12. | Alice Marielova |
| ✓ 13. | Kristin Kolbs |
| ✓ 14. | Danielle Cummings |
| 15. | |
| 16. | |
| 17. | |
| 18. | |
| 19. | |
| 20. | |

PUBLIC HEARING ON THE CLOSURE OF MCKINLEY MIDDLE SCHOOL

SPEAKERS TO ADDRESS THE BOARD

FROM HAYES MIDDLE

Wednesday, October 9, 2024

St. Albans High School

| | |
|------|----------------|
| ✓ 1. | Kara Dunbar |
| ✓ 2. | Victoria Ramey |
| 3. | |
| 4. | |
| 5. | |
| 6. | |
| 7. | |
| 8. | |
| 9. | |
| 10. | |
| 11. | |
| 12. | |
| 13. | |
| 14. | |
| 15. | |
| 16. | |
| 17. | |
| 18. | |
| 19. | |
| 20. | |

MINUTES

The Board of Education of the County of Kanawha
Charleston, West Virginia 25311



October 9, 2024

The Board of Education of the County of Kanawha met in Special Session on Wednesday, October 9, 2024 at St. Albans High School, St. Albans, West Virginia. The meeting was called to order by Board President Ric Cavender at 6:00 p.m.

PRESENT

Ric Cavender, President
Kate White, President Pro Tem
Tracy White
Jim J. Crawford, Sr.
Becky J. Jordon
Thomas E. Williams, Secretary

Debra J. Lewis, Recording Secretary

ADMINISTRATIVE STAFF

Paula Potter, Deputy Superintendent
Lindsey McIntosh, General Counsel
Andrew Crawford, Executive Director, Facilities & Planning
George Aulenbacher, Asst. Superintendent, High Schools, Technical & Adult Education
Ron Pauley, Executive Director, Human Resources
Matt Brumfield, Director, Technology

ADMINISTRATION'S PRESENTATION

Dr. Williams-Thank you all for being here this evening. School closures are among the most difficult recommendations that anyone in my position can make. We know that our schools are fixtures in our communities and they mean so much to the areas they serve. We do not take these recommendations lightly and please know that we are here to listen and I know that we will keep the meeting civil and respectful. As many of you know, Kanawha County Schools' student population is shrinking. In the last 11 years we have lost approximately 5,000 students. The West Virginia Legislature funds school systems based on their number of pupils, therefore, over the last 11 years we have also lost funding associated with those 5,000 students. That equates to roughly 460 positions being lost over the last 11 years and approximately \$26,000,000 in state funding over the same period. The West Virginia Legislature is the only group that can change the state funding formula. In addition to the loss of funding, we are also facing increases in required spending in the area of utilities, waste management, maintenance, and an increase in our mandatory liability insurance. Kanawha County Schools has been very good with budgeting and we have been able to absorb large losses without cutting deeply into schools or programs, but we are at the point now where we cannot continue to cut positions without also consolidating schools. You are probably wondering why my school. When making these difficult recommendations for consolidation this year, I had to first look at schools that could be consolidated without significant additional costs to the district. The two schools where this could occur are East Bank and McKinley Middle Schools. They were selected because there are schools nearby that can accept the students without any additions. Anytime there is a school consolidation there is concern by staff at both the closing school and the accepting school over staff retention and the process. When the staffing transfer season occurs, all staff across the county will vote on whether to give priority ranking to the staff from McKinley, in this case at Hayes, so if they would have to hire additional staff at Hayes, and the county would vote to give the McKinley staff priority, then they would have priority and historically in the past that has always happened. If this consolidation were to occur, during second semester students from McKinley will have the opportunity to join current Hayes students at Hayes to begin to meet new classmates and become familiar with the building. As outlined in the meeting notice, we have 16 speakers, so folks will have 3 minutes to speak. First, we will hear from the folks at McKinley and then we will hear from the folks at Hayes. On a personal note, I'd like to add that I know what consolidation and merging has done. My daughter was at Highlawn when it merged into Alban. My wife and my son and my daughter also went to McKinley. I spent 17 years in this building as a teacher and a principal and this community means a great deal to me. I know this is very difficult for folks to listen to and it's difficult for me and it is

ADMINISTRATION'S PRESENTATION (continued)

also difficult for our Board because these are not decisions that we like to make. I know I spoke a lot about budgeting and money and unfortunately that is something that I have to look at because as a system as a whole we have to remain in the black so we can pay our bills and pay our teachers and our staff, so that's why I have to look at the budget in addition to doing what I feel is the best for all of our students.

SPEAKERS WHO HAVE SIGNED UP TO ADDRESS THE BOARD FROM MCKINLEY MIDDLE SCHOOL

Kevin Pennington-Thank you for this opportunity to speak. Dr. Williams you were a teacher of mine here at St. Albans High and Mr. Crawford you were my football coach at St. Albans as well. I know this is a difficult decision for you guys. I am the Park Superintendent here in St. Albans. One of my passions was to upgrade all of our park systems to encourage younger families to come to St. Albans. One of the things that we look at when we are buying a house is the schools and St. Albans has been devastated. Since the 80's we have lost six elementary schools. In 1987, I stood before the Board of Education at that time and gave a speech on not closing McKinley and you guys decided to close St. Albans Junior High. It has had a devastating impact on our city. I can't say one negative thing about Hayes. Hayes is a great school. You will hear from others about why can't we keep McKinley open, especially since you just closed Weimer. It's a great opportunity to merge McKinley into Weimer but I'm not going to spend my time with that. I keep hearing consolidation but in truth this is not a consolidation this is a closure. The great staff that are at McKinley Middle School, that are ranked 3rd on test scores that we value so highly, have to go find another job next year. If we are doing a consolidation of the two schools then we would merge the two teaching staffs together into one. I know that you are saying that the McKinley teachers would get priority but we have to vote on that. These teachers are #3 in this county on test scores. I believe we are #33 in the State and you are telling me that our teachers are now going to be disbanded and put elsewhere. It's not fair to our teachers and it's not fair to our kids and I ask again if there are other areas to cut. I know what a budget is like, I don't have your all's budget but our park system has a budget. I have had to make cuts just like you guys but I think that we have learned that closing schools is not the answer. Closing schools is not going to bring young families to Kanawha County. It's not going to bring young families to St. Albans. Thank you.

Jill Newman-Because I was afraid that our time would be cut to 3 minutes, I sent each of you my comments this morning in an email. It is my understanding that the 2020-2030 ten-year plan for the St. Albans Area is to close both McKinley and Hayes Middle Schools

SPEAKERS WHO HAVE SIGNED UP TO ADDRESS THE BOARD FROM MCKINLEY MIDDLE SCHOOL (continued)

and build a new state of the art facility to house both schools. We are not going to attract students if we close McKinley and push all of those students into Hayes. Both facilities are rated poorly in the facilities assessment and the proposal for closure. A new facility would offer academic opportunities and will attract people back to public schools. Such a facility would retain our current population and might even attract new families and students from neighboring counties. If you vote to close McKinley and move the current student population to Hayes, you will continue to see the loss of student enrollment each year. This closure proposal and consolidation has zero benefits for our students. It was offered that we would have additional opportunities and additional academic courses and additional special education programs. All of those are offered at both schools right now and in our testing, we were 3rd in the county with 61% of our families at a socio/economic disadvantage. I am telling you that says something about our students, our teachers, our faculty and our staff at McKinley. The cost of closing McKinley is much higher than the savings of \$651,000 annually. They will not be attending a new and improved facility, class sizes will increase and the building will be overcrowded. There is not one common area that can hold the combined students at this time and portables will need to be added for additional classroom space. The bus times nearly double for the students coming from McKinley and in the proposal you have 3 buses to transport the students, neglecting the fact that half of our students walk or have car transportation. That will not happen if they are out Strawberry Road. I am hopeful that this is a growth minded Board that sees the need to invest in our kids and our community instead of downgrading their educational experience at a meager savings of .16% of the total Kanawha County Budget.

Teresa Farley-If this proposal is made because of a financial decision, from the numbers in your proposal it doesn't add up. If you are doing it on an academic performance issue then you are putting the emphasis on the wrong thing. We scored 3rd in Math, Science and English in the county. We are 33rd in the state out of 169 middle schools so you are punishing the kids for doing well. Let's look at the data from the proposal. On page 3, the proposal listed a \$651,000 savings from a \$402 million dollar annual budget. So after going over the data in depth these numbers don't add up. I hope to show that some of this is very flawed. On page 4 it says that the closure and consolidation would result in a reduction of 20 professional personnel and 8 ½ service personnel. Page 15 and 16 shows that Hayes is gaining one teacher and adding 260 plus students. With many of the 7th and 8th grade classes already at over 30 kids per class, where are you going to put these additional students without ending up with 50 plus kids in a class, not to mention federal guidelines mandates how many special education teachers that you have to have for so many students. We have a discrepancy about your number of

SPEAKERS WHO HAVE SIGNED UP TO ADDRESS THE BOARD FROM MCKINLEY MIDDLE SCHOOL (continued)

employees that are needed. Page 1 says that additions, renovations or replacements are not required or proposed to Hayes Middle School to accommodate McKinley students. Page 29 says they have 34 rooms total that can be used for all of the different types of educational classrooms so we have again 30 or more students already in some of these classes so how are you going to incorporate another 260 students without adding additional classrooms or renovations to the building. If you do have to make renovations or bring in portables that is lowering your cost savings.

Mayor Scott James-I am the Mayor of the great city of St. Albans. I am not here to fight and argue about one school closure over another because numbers are way down. I remember when Hayes had 1,000 students and when St. Albans and McKinley at the same time had 500 or 600 students. Our population has gone down with chemical plants dying down and the interstate not coming on our side of the river has really hurt the population in this area. A couple of things about McKinley versus Hayes. I do believe that the roads are safer bringing the kids to McKinley versus going out Strawberry Road. I think you have facilities up here where you could use Weimer for 6th grade students and McKinley for 7th and 8th grade students. I do think that last night the 100-year flood zone was brought up at DuPont. Hayes has got a flood zone to the left of the building at the football field. It's a 100-year flood zone. So you have certain things that need to be taken into consideration. I think overall it is going to hurt St. Albans High School and I'll tell you why. St. Albans at one point was the second largest high school in the State of West Virginia. This year grades 9-12 has about 800 students and I think if you bus people out to Hayes the kids from Jefferson that go to McKinley will end up going to St. Albans and that's going to reduce our population even more. In the end, this is what I ask of the Board, whatever you do please consider renaming the new middle school St. Albans Middle School. I think it makes for an easier transition and gives the people in our community an identity. I learned early on in my career that the one position that I wouldn't run for was the Board of Education. I don't envy the job that you have.

Wade Stansbury-I don't want to be redundant but I second the Mayor's statement about locations and logistics and things. I think the map that was provided was pretty shoddy. I think it was designed kind of skewed in one direction to make you think that the bus times will be less than they really will be and it will take a long time to get to Hayes and I think traffic will bottleneck at the loop. I think that you guys need to slow down and pump the brakes a little bit and walk through this a little easier. No one wants to make a lateral move unless it's sweet. You don't want to take a lateral move and take less pay or the same pay. Whether you close one or the other you are not

SPEAKERS WHO HAVE SIGNED UP TO ADDRESS THE BOARD FROM MCKINLEY MIDDLE SCHOOL (continued)

gaining anything out of it, you aren't getting a swimming pool. Some of you might laugh at the swimming pool but I'm coming from a county where when they consolidated they took away the swimming pool so that's why I use that analogy. Don't rush this. Input would be a little easier to chew on if you would let people's feelings get out of the way first. You are taking two football programs and two band programs and you are consolidating them and providing less opportunities. There's only a limited number of positions available. Some of the Metro News Articles I read mentioned the security costs you guys talked about in the excess levy. The scoreboard at Laidley Field is going to cost \$358,000, the security is going to be \$836,000 and the Carver upgrades are going to be \$653,00. Don't rush this plan. Think about the costs again. It's all about academics.

Randall Brynside-The thing that scares me the most is that I have three that's left in grade school at Alban Elementary. You consolidated Alban and Weimer last year. We lost part of our students that will now be fed into the South Charleston area. Now you are going to close down McKinley and I have one that will go out to Hayes next year. Well then there is the bus, the roads, Smith Creek Flooding every year. How is that going to be addressed for all the new students that are going out there. I know it's hard to get around the money issue that you all have and I hope that you all consider the kids. It's not really a convenience that we are supporting our school, but we are supporting our teachers. Like they said they scored 3rd in the county. I hate it for the kids and the teachers and for the kids especially being on the bus for 45 minutes to an hour.

David Rucker-I'll be honest. I was really hesitant to come here today and speak because as a TIRE position you all pretty much determine if I have a job next year. I think we are making bad relationships in the way this has happened. It leaves a bad taste for the students. Closures are tough for everybody. As an elected official in St. Albans, I have received a lot of phone calls from all over the city. We deserve what everybody else gets or what everyone has gotten in the past. I come and hope that it will not be hate filled but heartfelt. I hope that you all pause. We knew this was coming but this was an understanding of a three or a five-year plan and all sudden it was right now. We are winning in one process here with the money but our kids matter and what we are going to be doing to them matters. Let's build a CTE school. Let's build it somewhere here in town. Let's start taking kids from Putnam County and South Charleston. This is going to increase truancy. These kids hardly make it McKinley, they aren't going to make it at Hayes. Neither school has an auditorium large enough. What do we do with a shelter in place?

SPEAKERS WHO HAVE SIGNED UP TO ADDRESS THE BOARD FROM MCKINLEY MIDDLE SCHOOL (continued)

William Rouse-Growing up in St. Albans I lived a block from St. Albans Junior High. It was great and then it was closed. I lived on the other side of the tracks so I couldn't go to McKinley. The test scores were lower at Hayes. The opportunities were not there for me because I literally lived on the wrong side of the tracks. When it came time to send my son to an elementary school, I lived at the end of a road where I could pick between Alban and Central and I picked Alban because the test scores were higher. I sent my son there. When we were taking him to Alban there was a minimum of thirty minutes waiting to pick him up. When I was being bused to Hayes every now and then I would walk. From Kanawha Terrace to Hayes there are no decent sidewalks. From the middle of town to Hayes there are no safe sidewalks. Walking across the Coal River puts you in high crime areas. Strawberry Road has no walkable pavement on either side. It is dangerous. They have flooding and you will have an increase of snow days. You will have a school that is at capacity. We keep losing schools in this area. I hope you reconsider your decision.

Trevor Morris-I am a Trojan. I ran Cross Country and Track and wrestled at McKinley. I was very active in school and the staff at McKinley have supported me even after my high school graduation. When I heard about the closure at McKinley I was very frustrated. This is a closure not a consolidation. The effects on this community will be very negative. It will affect the children, as they will have to adjust to a new school. We already have a mental health crisis and this will not help. Another thing is that they will be in larger classes. Many of these students play sports and it will be harder for them to make the team now because the number of players stays the same. Many will never have the opportunity to play a middle school sport. It will also affect the hard working parents who make the effort to be invested in their child's life. It will affect the community. The Strawberry Road Community and the St. Albans Community will all be affected and it will cause major issues for them. It will affect the school staff. They have shown the results through the test scores. First off, the traffic on Strawberry Road will be horrible. Many parents work in Charleston and they will have to back track to work due to the location of Hayes. The school itself is not in the flood zone but the surrounding area is and I have the map right here of the flood zone. If both ends would flood there would be no way in or no way out. You will be shutting down jobs with this closure. The principal who had dedicated 18 years of her career here will be told to find another position.

Jared Page-I am a member of the St. Albans City Council and it's an honor to serve as the Vice Mayor for the City of St. Albans. Dr. Williams, you know that my Dad was the first PRO in Kanawha County many years ago here at St. Albans High School. I am concerned

SPEAKERS WHO HAVE SIGNED UP TO ADDRESS THE BOARD FROM MCKINLEY MIDDLE SCHOOL (continued)

about safety with this school closure and consolidation. It would take the PRO Officer here at St. Albans upwards of 9 to 10 minutes to get to Hayes. I think we would really be in a bad situation with our response time with trying to get out there. I have nothing against Hayes at all. If this would pass tonight, it would be beneficial to look at renaming

it St. Albans Middle School. It's my understanding that the gym and the bleachers at Hayes were currently scheduled to be redone. It's already scheduled and I believe it is coming up soon, so if there is something we could do we would love to work collaboratively with you all to make this happen. I understand and respect the situation that you all are in. We look forward to working with you all with whatever decision you make to unify our community.

Dwight Rice-I am an 8th grade math teacher at McKinley. I agree with some of the other speakers that a \$651,000 savings is not realistic. It's not achievable with the circumstances of this closure. We understand that consolidation may be necessary with the population decline. With a decline in our state's test scores, closing schools that are succeeding isn't going to help change that. Our math team has achieved growth every single year. Closing McKinley is closing the only school that has showed growth in the last two years in Kanawha County. I come today with data that represents McKinley Middle School, please invest in us.

Alice Horielava-I am a student at McKinley, and I am against shutting the school down. I've been here for more than a year and I have got to know the principal and the teachers. For a lot of students, it's a convenient school and other schools are further away from people's houses. Also for emergency reasons, parents will not be able to pick the kids up because it will be too dangerous on the roads. If this school closes, some will go to private school and some will be homeschooled. This school has helped open up a lot of opportunities for me.

Kristin Kolbs-I came to speak not just on the behalf of my daughter but of all the kids at McKinley. I feel as though this change is not good just for the kids but parents too. Most parents drive towards Charleston to get to work. Now they are going to have to go out of their way to get to work from Hayes. You say there are going to be new buses, but we already have a shortage of bus drivers. Kids need consistency. Now you are making them go to another school where you have to learn their rules. I think it's going to be an uproar for a while. Their behavior is going to change because their environment is going to change. I think you should take that into consideration.

**PEAKERS WHO HAVE SIGNED UP TO ADDRESS THE BOARD FROM MCKINLEY MIDDLE SCHOOL
(continued)**

Something else is the roads, they are horrible. The response time for the police to get there in case of an emergency scares me. I am a very worried mother. I think you should take that into consideration as well.

Danielle Cummings-I am the mother of two boys, the first one has already left and is at WVU. We are supposed to go to Hayes but I chose McKinley because of the test scores. They had better scores then and now. My next son is in 7th grade. Safety is another concern. It won't matter what kind of education my son will get if he doesn't come home. My concerns about Hayes is that Hayes only has 3 empty classrooms, which cannot accommodate 270 new kids. They are currently running at a 18:1 teacher/student ratio. I see in your document that you are only adding one teacher and that is not acceptable. Space wise I'm opposed to portables because they are not secure and not safe in this day or time. Why would you add onto a building that is surrounded by a flood zone? That makes no sense. There is supposed to be levy money that goes into place this year that we got phone calls asking us to help vote on this levy because it would benefit McKinley for repairs and so forth, so where is this money going? Why can't it help keep McKinley open? Hayes is outside of the city limits. Travel time for McKinley students is going to be a lot longer. As far as a fire department, there's one on Walnut Street, which would take 2 minutes for them to get to McKinley. Hayes doesn't have a professional fire department out there, they have to rely on a volunteer fire department. As far as police, St. Albans will not be coming out there because it is outside of city limits. If the schools combine, students that have 504 plans will need certain accommodations. Bigger classrooms will not only make it harder for the teachers to accommodate these 504 plans but this falls under the Disability Act and that means you all will be in violation, which means parents can then sue you because you are required to supply this for students. We have great staff and several have talked about the test scores. I also know that they will keep them safe. You are going to take that family from these children and make them start over again.

SPEAKERS WHO HAVE SIGNED UP TO ADDRESS THE BOARD FROM HAYES MIDDLE SCHOOL

Kara Dunbar-I am the principal at Hayes Middle School and I know there are very many emotions here this evening but I am here tonight with many staff members from Hayes to welcome the McKinley community if you all are to consolidate. There are a couple of misconceptions out there that I would like to clear up. The school itself is within city limits. The SAPD does report to us. There was also a typo on the original plan that was provided, so it's not one teacher that is being added, it's eleven. It has been our shared

**SPEAKERS WHO HAVE SIGNED UP TO ADDRESS THE BOARD FROM HAYES MIDDLE SCHOOL
(continued)**

vision as a staff since this was announced to unite the community and make McKinley feel welcome. There are many benefits that we are looking at with the benefit of adding staff, adding classes, especially in the related arts with the focus of the career/tech. My idea is that we can offer courses that do focus on career/tech so we can get the kids excited and that will increase attendance. It's also a great way to improve our extra curricular programs. In past years we have already had to combine our athletic programs due to the lack of coaches or the ability to build a team and we have had great success. Softball has brought home Kanawha County Championships as combined schools. Baseball actually made it to the semi-finals. Many of these students have grown up together and played Bidly Basketball and on youth soccer leagues and they already know each other because we are a part of the same community. We will function as one community. This will not be one versus the other if you are to vote to consolidate. I do understand that no one wants their school closed and we have already worked together as a staff so if this happens, we plan to bring McKinley students to the school several times throughout the year so next year the students feel that they are already a part of the school.

Victoria Ramey-I am a parent of a 6th grader at Hayes but I also have relatives and members of my girl scout troop at McKinley. I'm worried about this proposal and urge you to consider postponing it. I think a lot of us are very stressed out and worried. Our principal, and what she just said about making a plan, sounds amazing but there's not enough time left for them to meet once a month at this point to make that big of an impact. I would urge the Board to consider postponing for another year. On page 11 the calculations don't make sense. You have the enrollment at Hayes and McKinley listed which is about 70 students less than if you add the two numbers together. I also am very concerned as a mother of a child that has a disability as well as a high IQ that we are not going to have the support that we need to adequately provide for everyone with a 504 or an IEP.

Mr. Cavender-First I want to say thank you all for taking the time to be here tonight and providing us your feedback. This is how we gather our information when decisions like this are being considered so we know what to ask based on your input. Just so everyone is clear in order for us a Board to enter into discussion, a motion does have to be made and so I am going to ask Mrs. Kate White to make that motion.

NEW BUSINESS

A. McKinley Middle School

Mrs. Kate White moved: The Board close McKinley Middle School at the end of the 2024-25 school year and merge students into Hayes Middle School, for the reasons stated and as described in the closure documents provided to the public. Motion was seconded by Mr. Jim J. Crawford.

Mrs. Tracy White-Thank you all for you all coming. One of the big questions is if the roads are safer going to McKinley as well as the possibility for the roads to flood more going to Hayes, so I guess my main question is why did we choose Hayes over McKinley. Dr. Williams-There are more students at Hayes to move to McKinley so the transportation costs would probably double because there are about 200 more students at Hayes then there is at McKinley. Hayes is a newer building. Mrs. Tracy White-Is Hayes in a flood zone. Dr. Williams-I have been texting with Mr. Crawford, he's our architect down here and he says the building is not in the floodplain. He sent me a map just now. The wooded area to the left of Hayes is in the 100-year floodplain. None of the grounds or buildings are in the floodplain. Mrs. Tracy White-What about the roads going to the school? Dr. Williams-The roads do occasionally flood going out Strawberry Road, however when I was here as principal, I don't remember it being a reason that kids missed a lot of school. It happens occasionally in a lot of our areas. Mrs. Tracy White-Another question was 504s and IEPs. Dr. Williams-We are required to follow by law all 504s and IEPs. We have always provided the services that our students need. Hayes is a one story building that is ADA accessible. McKinley has a set of steps that goes up to the cafeteria and we have tried for years to make that ADA accessible and it's a very difficult thing to do. Mrs. Tracy White-Is the auditorium, the cafeteria and the gymnasium at Hayes large enough to accommodate that amount of students. Dr. Williams-Yes, it is. As the gentlemen said earlier, Hayes at one point had 1,000 kids. This would be right at 675 kids. Mrs. Tracy White-Would you have a need to move portables in if we combine these two? Dr. Williams-No, they currently have a portable out there that is being used as a wrestling room. Mrs. Tracy White-What will our student/teacher ratio be? Dr. Williams-We would be adding 11 teachers and as of today, the student population at McKinley was 255, so it would be a 17 or 18:1 ratio. Mrs. Tracy White-Just to be clear, it was brought up about a name change suggestion and that can't be decided this evening. If this would pass tonight then we would come back and decide on a name change. We can't do that at the same time. Thank you all so much for being here this evening.

Mrs. Jordan-Thank you all for coming this evening, Mrs. White asked most of the questions that I had, so I will pass this on to Mrs. Kate White.

NEW BUSINESS (continued)

Mrs. Kate White-I heard folks talk about transportation and how it will be longer times for our students. Can you talk about that and how those times were determined? Dr. Williams-Sure. Just to double check this afternoon, the buses actually ran through high traffic times this afternoon and the times were consistent with what we have in the materials that we gave out, however, with the number of students that do walk and/or are dropped off by the parents on the way to work, if we would need to add an extra bus or two then that is what we would do. Mrs. Kate White-I heard we would close the breezeway at Hayes to increase some room capacity so can you address that? Dr. Williams-We've been asked by the Hayes Community for years to enclose the breezeway and last year with ESSERF Funds we were able to set aside money to do that. ZMM is the architect that has designed that enclosure and it won't be classrooms, it will be an enclosed walkway from one part of the building to another so kids won't be going outside. Mrs. Kate White-Some folks have asked about building a new school. Can you talk about that in terms of the cost? Dr. Williams-A middle school would be approximately \$50 million and we would have to purchase the property. If that is something the community would want, they would have to put a bond call out to the community as a whole to have a new consolidated school in St. Albans. I don't know that the SBA would provide the funding due to the student loss that is supposed to occur over the next few years. Probably the entire cost would have to come from the bond call. Mrs. Kate White-I just want to thank everyone for coming this evening. I know this is really hard. It's hard for the community, the teachers and the students. I am a new Board Member and this is hard. I just want to thank you for sharing. We are in a really difficult position to do what is best for our students. I believe that small community schools are what is best for our students but we are losing students and that means the way that we are funded by the state legislature means we are losing our funding. That funding doesn't take into account the low-income population that we have, or the students with disabilities. They need to update it and increase it and adequately fund our schools and I ask you to please contact your legislators and express your support for that so we can support the small community schools.

Mr. Crawford- I think that most of the questions that I had have been answered. One of the things that I would like to say is back in 1962 when I came to SAHS as a teacher we had 1,850 kids. We had three junior high schools that were busting at the seams. Today we are lucky to have enough kids to be in one school. I do not like the idea of consolidation or closing the school but due to the financial situation, which the Board has to consider, it is a hard decision for us to make. I thank everyone that has been here tonight and shared with us.

NEW BUSINESS (continued)

Mr. Cavender-Someone brought up security measures. Can you expand on the security measures that will be in place. Dr. Williams-Those were on the agenda this past Monday and those were things that were put in the excess levy. It's the Weapons Detection Systems that all of the high schools will receive and they are portable so they can be taken out to other schools or ballgames if necessary. As well as our security folks, we were able to hire 12 additional folks that now work in our middle and elementary schools because most of our high schools have a PRO. As Jared spoke earlier, his father was the first one here and it was the year that we lost two students in one week due to drugs. Mayor Calloway at the time asked what the city could do to help and I said we need an officer in our building. We had Officer Paige who was fantastic. With these new folks that were hired through our excess levy, we hope the same relationships will be formed. Mr. Cavender-There was a question that when we approved the levy there were some items for McKinley on the call. What is the plan for that? Dr. Williams-In all levy calls there's a statement that says if something would happen with that particular school than that money would be spent at another school for similar things. For example, if that school was supposed to get a safety vestibule and that school closed, then that money would be used to pay for another school to get a security vestibule. Mr. Cavender-Would this money be spent at Hayes? Dr. Williams-It could be. It just depends on what it is. Mr. Cavender-We heard from several people about Strawberry Road and can you expand on that? Dr. Williams-It is out of our control, however Delegate Walter Hall is working with other delegates in the legislature to widen Strawberry Road and it would start at Tudors and make the circle for a lack of a better term larger so the turn and the turn on out could be widened as well. They are working on that for this session coming up.

Mr. Cavender-The motion has been made and I will ask Mrs. Lewis to now call for the question.

The above motion unanimously carried.

ESTABLISHMENT OF MEETING DATES

- A. Wednesday, October 9, 2024, 6:00 p.m.-Special Session (Closure Hearing for McKinley Middle School at St. Albans High School)
- B. Tuesday, October 15, 2024, 6:00 p.m.-Special Session (Closure Hearing for Belle Elementary at Riverside High School)

ESTABLISHMENT OF MEETING DATES (continued)

- C. Wednesday, October 16, 2024, 5:00 p.m.-Regular Session
- D. Thursday, October 17, 2024, 6:00 p.m.-Special Session (Closure Hearing for Mary Ingles Elementary at Riverside High School)
- E. Monday, October 21, 2024, 6:00 p.m.-Special Session (Closure Hearing for Malden Elementary School at Riverside High School)
- F. Tuesday, October 22, 2024, 6:00 p.m.-Special Session (Closure Hearing for Midland Trail Elementary at Riverside High School)
- G. Monday, November 4, 2024, 4:00 p.m.-Special Session
- H. Thursday, November 21, 2024, 5:00 p.m.-Regular Session

NOTE: The above meetings of the Kanawha County Board of Education, unless otherwise indicated, will be held in the Board of Education Building, 200 Elizabeth Street, Charleston, WV.

ADJOURNMENT

Mrs. Kate White moved: That the Special Session of the Board be adjourned. Motion was seconded by Mrs. Becky J. Jordon and unanimously carried. The Special Session was declared adjourned by Board President Ric Cavender at 7:18 p.m.

President

Secretary

djl
10/11/2024

Appendix of Supporting Data

County Procedures

7. Cover Letter

Cover letter addressed to the State Superintendent of Schools:

Appendix of Supporting Data

County Procedures

8. Superintendent Signature Pages

[Completed Superintendent Signature Pages:](#)

3.0. County Procedures

WVDE Application for school closure and/or consolidation

Kanawha County

Closure of McKinley Middle School into Hayes Middle School

Scheduled Date of Hearing: Wednesday, October 9, 2024, at 6:00 P.M.

Scheduled Date of County Board Vote: Wednesday, October 9, 2024, following the Hearing

County Procedures

This template shall be used to accumulate and present the data that is requested in Policy 6204 and W.Va. Code 18-5-13a to support the closure or consolidation of a WV public school.

The county shall prepare written reasons and supporting data concerning proposed school closings or consolidations to be submitted to the WVBE for approval in accordance with this policy and W. Va. Code §18-5-13a. The written materials shall:

- be available for public inspection in the office of the county superintendent during the 30 days preceding the date of the public hearing; and*

Be delivered in duplicate to the:

- principal of a school that is proposed to be closed or consolidated, and of any school which the county designates to receive the students who are relocated as a result of the closure or consolidation; and*
- chair of the local school improvement council (LSIC) representing a school that is proposed to be closed or consolidated, and any school that the county designates to receive the students who are relocated as a result of the closure or consolidation.*
- A copy of the notice shall be posted at all schools, bus garages, and maintenance areas in the county in conspicuous working areas, for all professional and service personnel to observe.*

Thomas E. Williams, Jr., Ed.D.



10/28/24

Superintendent

Date:

3.2.f. Educational Program

County Procedures

Analysis and Assurance of Consideration

Complete a projected educational program improvement analysis which includes a statement of assurance that the following have been considered:

Affected School Name(s)

McKinley Middle School and Hayes Middle School

In the preparation of the documents regarding the closure and/or consolidation of the above referenced school, the following codes and policies have been considered:

Please check each item that was considered.

- W. Va. 126CSR16, Policy 2419, Regulations for the Education of Students with Exceptionalities,
- W. Va. 126CSR42, Policy 2510, Assuring the Quality of Education: Regulations for Education Programs,
- W. Va. 126CSR44 et al., Policy 2520, Content Standards and Objectives for West Virginia Schools,
- WVBE Policy 6200-Planning of School Facilities
- WVBE Policy 6204-School Closings or Consolidations



10/28/24

Superintendent

Date:

3.6.a. Superintendent Verification of Board Actions

County Procedures

McKinley Middle School and Hayes Middle Schools

Date of hearing: Wednesday, October 9, 2024, at 6:00 P.M.

Date of board approval: Wednesday, October 9, 2024, following hearing

Kanawha County requests the West Virginia Board of Education approve the following.

Closure and Consolidation of McKinley Middle School into Hayes Middle School.

- ☒ *The county assures that the applicable sections of the W. Va. Codes §18-5-13 and §18-5-13a, and WVBE Policies 6200 and 6204 have been addressed.*
- ☒ *This action is justified by the provided supplemental data and information pertinent to the following subjects: enrollment, facilities, finance, personnel, transportation, and educational programs.*
- ☒ *Documentation of all hearings, motions, written public comments, a synopsis or transcript of verbal comments, and other actions concerning the proposed school closings and consolidations were provided in this document.*
- ☒ *All hearings were properly advertised with a class III legal advertisement.*

Thomas E. Williams, Jr., Ed.D.

Signature of county superintendent attesting to the completion of all requirements as stated in W. Va. Codes §18-5-13 and §18-5-13a and WVBE Policies 6200 and 6204.



10/28/24

Superintendent

Date:

Appendix of Supporting Data

County Procedures

9. Certified Enrollment for Kanawha County Board of Education

Most current October 1st certified enrollment:

**KANAWHA COUNTY SCHOOLS 2023 ENROLLMENT PROJECTIONS
BASED UPON SECOND MONTH ENROLLMENT DATA
GRADES K-12, SPECIAL ED INCLUDED**

| SCHOOL NAME | GRADE GROUP | 2023-24 ACTUAL | 2024-25 PROJ. | 2025-26 PROJ. | 2026-27 PROJ. | 2027-28 PROJ. | 2028-29 PROJ. | 2029-30 PROJ. | 2030-31 PROJ. | 2031-32 PROJ. | 2032-33 PROJ. | 2033-34 PROJ. |
|-----------------------|-----------------------|-------------------|------------------|------------------|------------------|------------------|------------------|------------------|------------------|------------------|------------------|------------------|
| MIDDLE SCHOOLS | | | | | | | | | | | | |
| ANDREW JACKSON | (6-8) | 494 | 490 | 516 | 492 | 459 | 440 | 426 | 414 | 389 | 383 | 373 |
| DUNBAR MIDDLE | (6-8) | 297 | 290 | 291 | 291 | 283 | 270 | 260 | 255 | 252 | 248 | 241 |
| DUPONT MIDDLE | (6-8) | 407 | 433 | 406 | 373 | 347 | 359 | 363 | 353 | 326 | 317 | 309 |
| EAST BANK MIDDLE | (6-8) | 243 | 246 | 233 | 223 | 234 | 221 | 203 | 174 | 168 | 165 | 162 |
| ELKVIEW MIDDLE | (6-8) | 636 | 624 | 570 | 509 | 523 | 524 | 536 | 482 | 473 | 463 | 451 |
| HAYES MIDDLE | (6-8) | 442 | 448 | 442 | 424 | 406 | 409 | 401 | 386 | 380 | 373 | 362 |
| HORACE MANN MID | (6-8) | 395 | 363 | 366 | 360 | 374 | 357 | 345 | 320 | 316 | 310 | 303 |
| JOHN ADAMS MIDDLE | (6-8) | 712 | 744 | 699 | 728 | 735 | 736 | 705 | 664 | 654 | 640 | 623 |
| MCKINLEY MIDDLE | (6-8) | 289 | 265 | 233 | 230 | 212 | 218 | 214 | 206 | 198 | 192 | 187 |
| SISSONVILLE MIDDLE | (5-8) | 513 | 513 | 502 | 503 | 495 | 487 | 477 | 454 | 445 | 429 | 434 |
| SOUTH CHARLESTON | (6-8) | 364 | 360 | 362 | 325 | 308 | 277 | 262 | 243 | 239 | 233 | 227 |
| WEST SIDE MID | (6-8) | 355 | 346 | 341 | 323 | 328 | 324 | 321 | 292 | 282 | 277 | 268 |
| MIDDLE SCHOOLS | | 5,147 | 5,122 | 4,961 | 4,781 | 4,704 | 4,622 | 4,513 | 4,243 | 4,122 | 4,030 | 3,940 |
| Grand Total | KANAWHA COUNTY | 23,181 | 22,498 | 21,755 | 21,118 | 20,653 | 19,967 | 20,072 | 19,846 | 19,584 | 19,502 | 19,413 |